

# Fitting Instructions



SKU

**T7PA22**

PRODUCT

## **TAG Heavy Duty Towbar for LDV Deliver 7 (08/2024 – On)**

SPECIFICATIONS

- Towbar Class: CL 4 Heavy Duty
- Towing Capacity: 2000kg
- Tow ball Weight: 150kg
- Approx. Fitment Time: 60 Minutes



Scan for latest  
version of these  
instructions

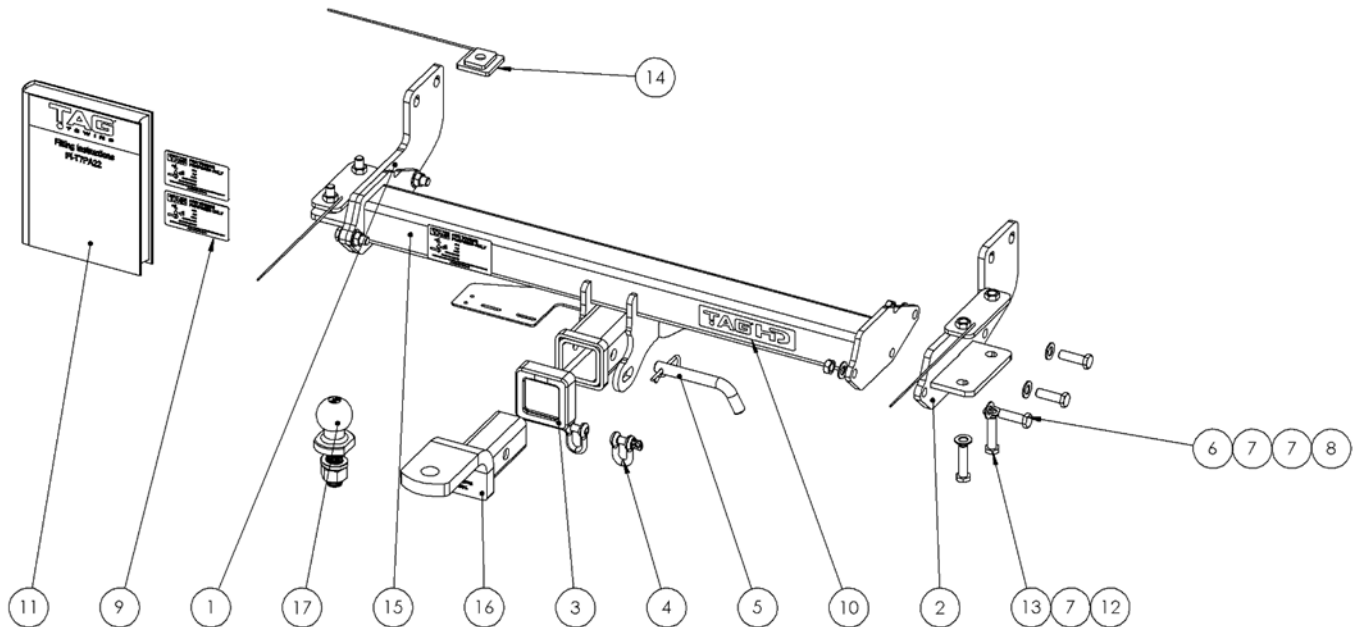
TOOLS REQUIRED

- Spanners
- Sockets
- Air Saw or similar.
- Trim Removal Tool
- Torque Wrench

IN THIS GUIDE

- Fitment Instructions
- Torque Settings
- Warranty Info

# Important Information



Item No.	Description	QTY.	Item No.	Description	QTY.
1	End Plate Assembly	1	10	TAG HD Sticker 150 x 33mm	1
2	Endplate Assembly	1	11	Fitting Instruction	1
3	TAG Hitch Cover	1	12	Chassis Nut Plate on wire	2
4	D-Shackle - 10mm. 1000kg	2	13	M12 x 1.25 x 50 Bolt	4
5	Class 4 Pin & Clip	1	14	Packer on wire	1
6	M12 x 1.25 x 40 Bolt	6	15	Welded Crossmember Assembly - T7PA22	1
7	M12 Flat Washer	16	16	TAG Tow Ball Mount - L4120	1
8	M12 x 1.25 Nut	6	17	50mm TAG Tow Ball - Chrome	1
9	Compliance Label	3			

# Important Information



**ENSURE THAT THE FITTING INSTRUCTIONS ARE READ AND UNDERSTOOD PRIOR TO FITMENT  
PLACE THESE INSTRUCTIONS IN THE VEHICLE'S GLOVEBOX AFTER INSTALLATION IS COMPLETED**

## Warning:

- This product is for towing purposes only and must only be loaded as shown in your vehicle Owner's Manual.
- This towbar is NOT to be drilled, cut, welded, or modified in any way.
- All load ratings shown are under the assumption your trailer has a functional braking system.
- When installed in positions other than the one shown in these instructions the Tow Ball/ Tow Ball Mount may interfere or obstruct certain features of your vehicle (tailgate opening, Chassis clearance, Sensor Operation, etc.)

## General:

- Before fitting this towbar check installation hardware is included and correct.
- Check that the towbar is suitable for the vehicle make, model and year then make sure any changes to the vehicle design do not conflict with the fitting of this towbar. (Tray, Canopy, Suspension etc.)
- Check behind chassis rail and body panels before drilling to ensure no hazards are present (fuel lines, electrical wires etc.)
- After drilling, blow any filings clear, remove any swarf in and around the area and treat exposed metal with a suitable rust inhibitor.
- If this vehicle requires a bumper cut out, please check to make sure that your measurements are correct and clear before cutting any panels as some bumper profiles can change. If you are not sure, then please ask your towbar supplier
- To ensure the towbar is safe and secure it is the owners' responsibility that each fastener is torqued **every 1000km**. For any reason that the fasteners are not suitable for re-torquing it is the owners' responsibility to replace all fasteners on the towbar ensuring each fastener is of the same grade (8.8) and class as the originals. Failure to do so will diminish the towing capacity of the towbar and may result in the deterioration of the chassis of the vehicle. Contact an authorised TAG distributor or the TAG fitment centre if further information is required.

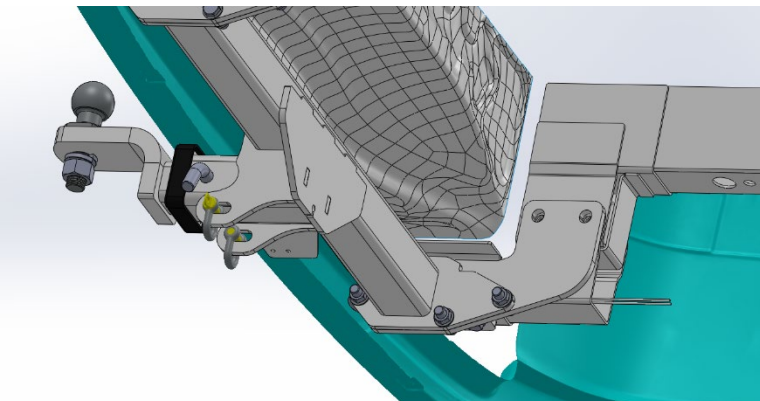
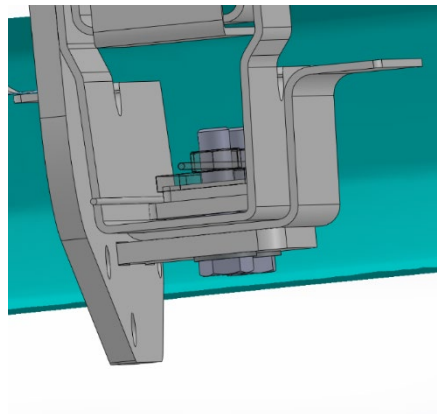
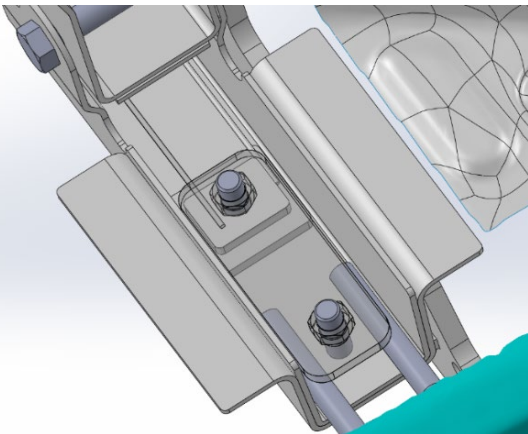
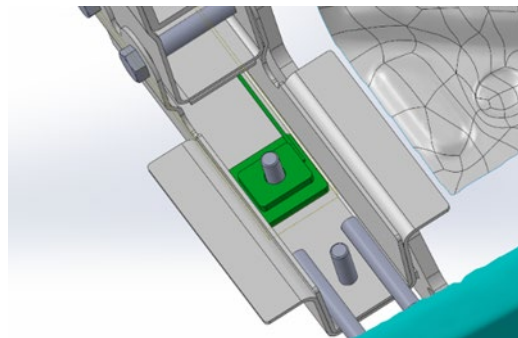
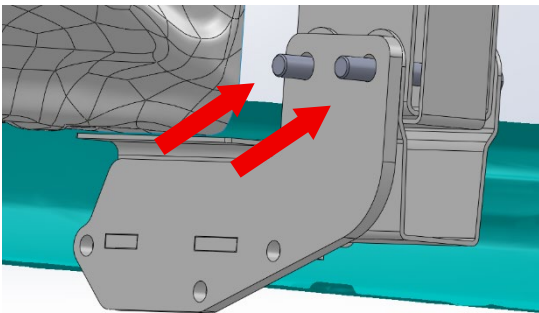
## Towbar Maintenance and Care:

It is recommended, when not in use, the Tow Ball Mount assembly and class 4 Pin and Clip is stored inside the car away from moisture to prevent standing water from forming rust. Inspect to ensure, on regular basis, fasteners are torqued to the specifications below and in good condition.

Metric Bolt Torque Settings										
Diameter	Pitch	Grade	Torque	Unit		Diameter	Pitch	Grade	Torque	Unit
M8	1.25	8.8	29	Nm		M12	1.25	10.9	125	Nm
M10	1.25	8.8	57	Nm		M12	1.50	10.9	105	Nm
M10	1.50	8.8	44	Nm		M14	1.25	10.9	195	Nm
M12	1.25	8.8	101	Nm		M14	1.50	10.9	165	Nm
M12	1.50	8.8	97	Nm		M16	1.25	10.9	295	Nm
M12	1.75	8.8	77	Nm		M16	1.50	10.9	250	Nm
M14	2.00	8.8	122	Nm		50mm Tow Ball	N/A	N/A	300	Nm
M16	2.00	8.8	190	Nm		70mm Tow Ball	N/A	N/A	750	Nm

## Step 1: Fit the Towbar

- Under the vehicle, loosen the 2 x M14 bolts and remove the nuts securing the step support assembly to the chassis. Repeat on opposite side.
- Lift the endplate up to the inside of the chassis and over the M14 bolts. Loosely secure with the original M14 nuts. Repeat on opposite side.
- On the driver's side, insert the chassis nut plate on wire into the cavity of the step support assembly from the front and align with the vertical holes. Loosely secure with 2 x M12 x 1.25 x 50 bolts with flat washers.
- On the passenger side, the chassis nut plate must be inserted into the cavity and over the towing-hook surrounding the rear-most hole. Insert the packer on wire under the chassis nut plate and align with the forward-most hole. Loosely secure with 2 x M12 x 1.25 x 50 bolts with flat washers.
- Lift the cross-member assembly up to the inside of the endplates and align the holes. Insert 3 x M12 x 1.25 x 40 bolts with flat washers and loosely secure with M12 x 1.25 nuts and flat washers. Repeat on opposite side.
- Beginning at the chassis, tighten bolts according to the torque specification on page 3.



# Installation Instructions

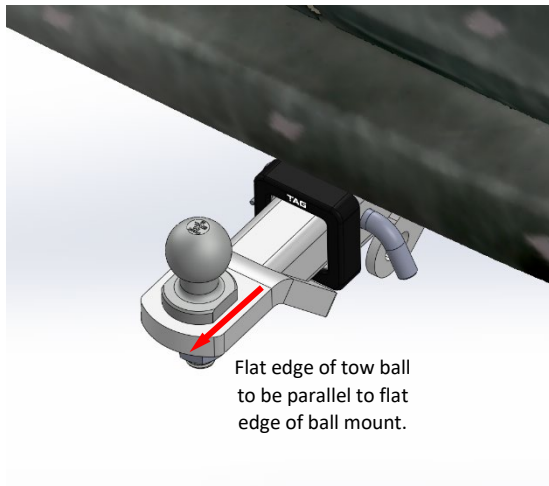


---

## Step 2: Complete Towbar & Apply Spare Compliance Label

---

- a. Attach TAG Hitch cover with rubber mallet carefully to prevent breaking.
- b. Attach the tow ball to the ball mount. The flat side of the tow ball **MUST BE** parallel to the outer edge of the ball mount. **Tighten the tow ball to 300Nm.**
- c. Insert the ball mount into the receiver and secure with the Pull pin and R-Clip. When not in use, secure the Ball Mount in a safe place inside your vehicle.
- d. Apply one of the compliance labels to the pillar of the driver's door. Place the remaining label and the fitting instructions in the vehicle handbook.



# TAG Warranty Statement



SWD warrants your TAG Towbar for its full product life under the following conditions:

- You can show proof of purchase.
- The towbar has been correctly installed by a suitably qualified installer.
- The towbar has not been modified or abused in any way and has only been used for the purpose intended.
- The towbar was not fitted second hand to your vehicle.

The extent of this warranty includes materials and workmanship used in the manufacture of the towbar and is to the equivalent value of current, full replacement cost.

Nothing stated or implied in this warranty limits in any way, the statutory rights that you may have.

To make a claim visit the original installer in the first instance or, if you are unable to or are not satisfied with their help, then contact us direct by phone on 1300 669122 or visit [www.swd.com.au](http://www.swd.com.au).