

Fitting Instructions



SKU

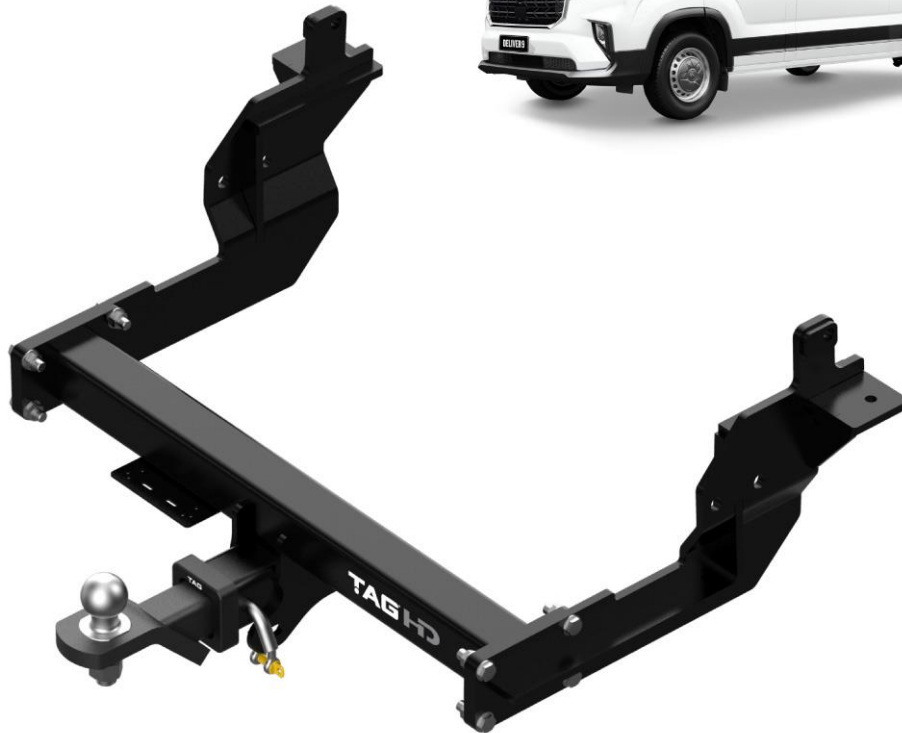
T7PA15

PRODUCT

TAG Heavy Duty Towbar for LDV Deliver 9 (07/2020 – On)

SPECIFICATIONS

- Towbar Class: CL 4 Heavy Duty
- Towing Capacity: 2800kg
- Tow ball Weight: 280kg
- Approx. Fitment Time: 45 Minutes



Scan for latest version of these instructions

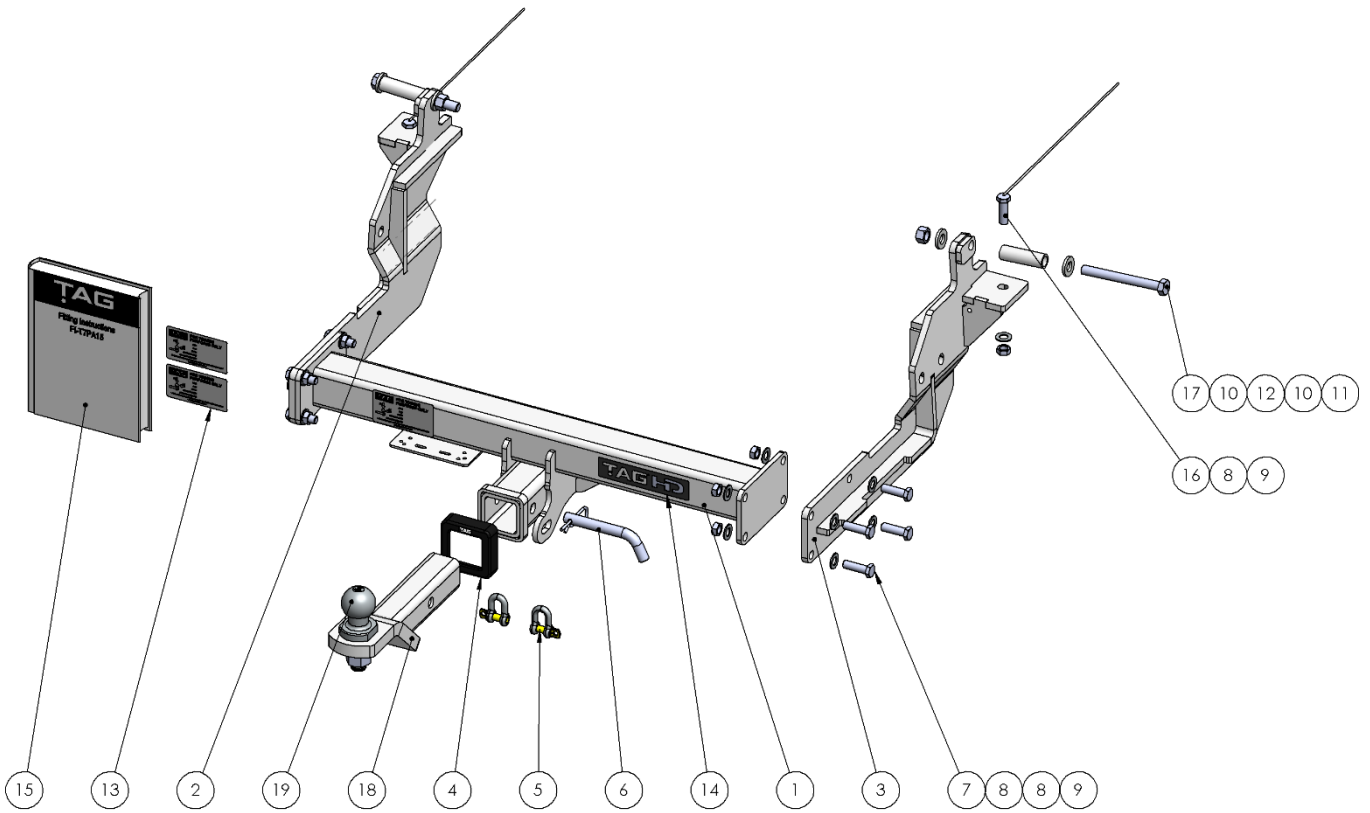
TOOLS REQUIRED

- Spanners
- Sockets
- Air Saw or similar.
- Trim Removal Tool
- Torque Wrench

IN THIS GUIDE

- Fitment Instructions
- Torque Settings
- Warranty Info

Important Information



Item No.	Description	QTY.	Item No.	Description	QTY.
1	Towbar Assembly	1	11	M14 X 1.5 Nut	2
2	End Plate Assembly PS	1	12	Chassis Crush Tube 70mm	2
3	End Plate Assembly DS	1	13	Compliance Label	3
4	TAG Hitch Cover	1	14	TAG HD Sticker 150 x 33mm	1
5	D-Shackle - 10mm. 1000kg	2	15	Fitting Instruction	1
6	Class 4 Pin & Clip	1	16	M12 x 1.25 x 40 Bolt on 400mm wire	2
7	M12 x 1.25 x 40 Bolt	8	17	M14 x 1.5 x 130 Bolt	2
8	M12 Flat Washer	18	18	L4045S Powder Coated TBM	1
9	M12 x 1.25 Nut	10	19	50mm TAG Tow Ball - Chrome	1
10	M14 Flat Washer	4			

Important Information



**ENSURE THAT THE FITTING INSTRUCTIONS ARE READ AND UNDERSTOOD PRIOR TO FITMENT
PLACE THESE INSTRUCTIONS IN THE VEHICLE'S GLOVEBOX AFTER INSTALLATION IS COMPLETED**

Warning:

- This product is for towing purposes only and must only be loaded as shown in your vehicle Owner's Manual.
- This towbar is NOT to be drilled, cut, welded, or modified in any way.
- All load ratings shown are under the assumption your trailer has a functional braking system.
- When installed in positions other than the one shown in these instructions the Tow Ball/ Tow Ball Mount may interfere or obstruct certain features of your vehicle (tailgate opening, Chassis clearance, Sensor Operation, etc.)

General:

- Before fitting this towbar check installation hardware is included and correct.
- Check that the towbar is suitable for the vehicle make, model and year then make sure any changes to the vehicle design do not conflict with the fitting of this towbar. (Tray, Canopy, Suspension etc.)
- Check behind chassis rail and body panels before drilling to ensure no hazards are present (fuel lines, electrical wires etc.)
- After drilling, blow any filings clear, remove any swarf in and around the area and treat exposed metal with a suitable rust inhibitor.
- If this vehicle requires a bumper cut out, please check to make sure that your measurements are correct and clear before cutting any panels as some bumper profiles can change. If you are not sure, please ask your towbar supplier.
- To ensure the towbar is safe and secure, it is the owners' responsibility that each fastener is torqued **at 1000km intervals**. If for any reason, a fastener is not suitable for re-torquing, it is the owners' responsibility to replace it to ensure it is of the same grade (8.8) and class as the original. Failure to do so will diminish the towing capacity of the towbar and may result in the deterioration of the chassis of the vehicle. Contact an authorised TAG distributor or the TAG fitment centre if further information is required.

Towbar Maintenance and Care:

It is recommended, when not in use, the Tow Ball Mount assembly and class 4 Pin and Clip is stored inside the car away from moisture to prevent standing water from forming rust. Inspect to ensure, on regular basis, fasteners are torqued to the specifications below and in good condition.

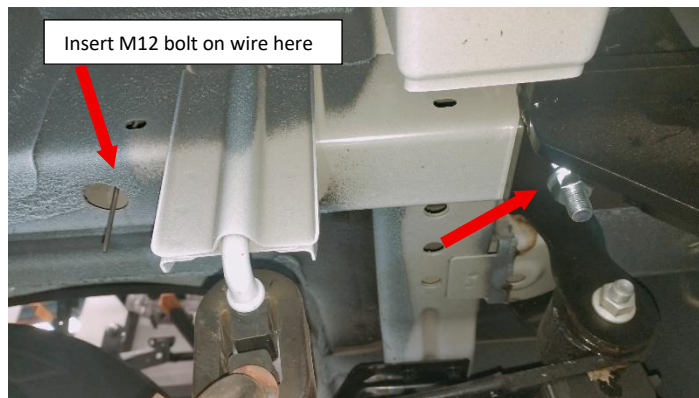
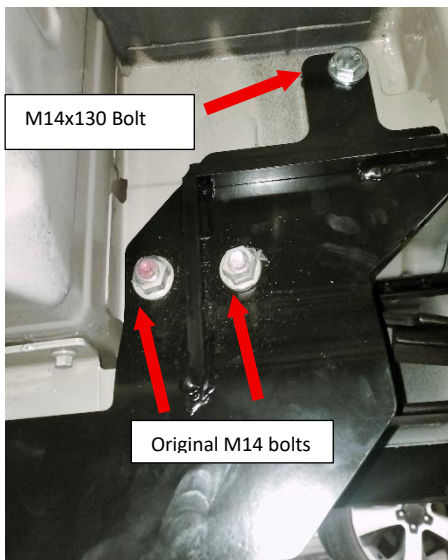
<i>Metric Bolt Torque Settings</i>										
Diameter	Pitch	Grade	Torque	Unit		Diameter	Pitch	Grade	Torque	Unit
M8	1.25	8.8	29	Nm		M12	1.25	10.9	125	Nm
M10	1.25	8.8	57	Nm		M12	1.50	10.9	105	Nm
M10	1.50	8.8	44	Nm		M14	1.25	10.9	195	Nm
M12	1.25	8.8	101	Nm		M14	1.50	10.9	165	Nm
M12	1.50	8.8	97	Nm		M16	1.25	10.9	295	Nm
M12	1.75	8.8	77	Nm		M16	1.50	10.9	250	Nm
M14	2.00	8.8	122	Nm		50mm Tow Ball	N/A	N/A	300	Nm
M16	2.00	8.8	190	Nm		70mm Tow Ball	N/A	N/A	750	Nm

Installation Instructions



Step 1: Remove Reverse Sensors and Fit Towbar

- Under the vehicle, locate the OEM M14 bolts fastening the crash bar to the chassis. Remove the nuts and keep the bolts in place.
- Place the endplate over the OEM M14 bolt threads and loosely fasten with the original nuts.
- Insert the M14x 1.5x 130 bolt with flat washer into the top-most hole of the endplate and the chassis rail. From the outside, place the crush tube over the bolt followed by the flat washer & nut. Loosely secure.
- Repeat steps (c-e) on opposite side.
- Lift the main bar assembly up to the endplates and align the holes. Insert 2x M12x 1.25x 40 bolts into the bottom holes only and secure loosely with flat washers and nuts. **Insert the top-most bolts from the inside and loosely secure with nuts on wire on the outside.** Repeat on the opposite side.
- Insert the bolt on wire into the chassis, forward of the end plate assembly. Align with the vertical hole of the endplate and loosely secure with M12x1.25 nut & flat washer.
- Beginning with the M14 bolts, tighten all fasteners according to the torque specification on page (3).

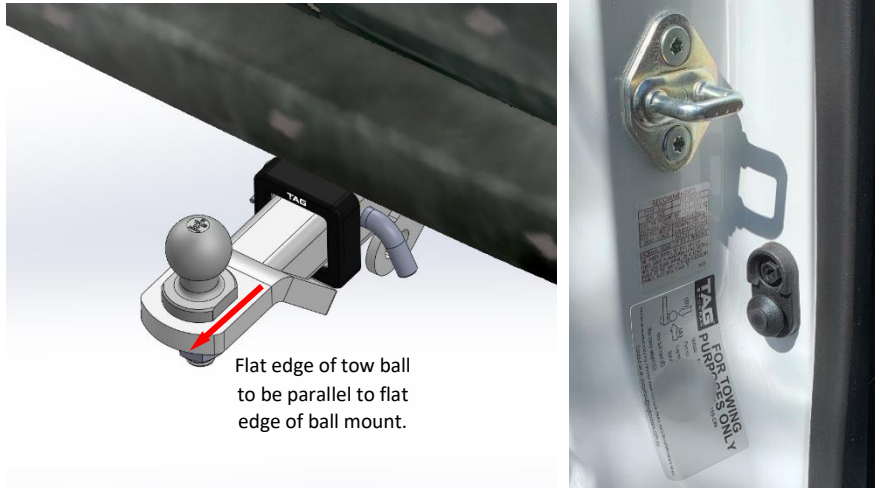


Installation Instructions



Step 2: Complete Towbar & Apply Spare Compliance Label

- a. Attach TAG Hitch cover with rubber mallet carefully to prevent breaking.
- b. Attach the tow ball to the ball mount. The flat side of the tow ball **MUST BE** parallel to the outer edge of the ball mount. **Tighten the tow ball to 300Nm.**
- c. Insert the Tow Ball Mount into the receiver and secure with the Pull pin and R-Clip. When not in use, secure the Ball Mount in a safe place inside your vehicle.
- d. Apply one of the compliance labels to the pillar of the driver's door. Place the remaining label and the fitting instructions in the vehicle handbook.



Flat edge of tow ball
to be parallel to flat
edge of ball mount.

TAG Warranty Statement



SWD warrants your TAG Towbar for its full product life under the following conditions:

- You can show proof of purchase.
- The towbar has been correctly installed by a suitably qualified installer.
- The towbar has not been modified or abused in any way and has only been used for the purpose intended.
- The towbar was not fitted second hand to your vehicle.

The extent of this warranty includes materials and workmanship used in the manufacture of the towbar and is to the equivalent value of current, full replacement cost.

Nothing stated or implied in this warranty limits in any way, the statutory rights that you may have.

To make a claim visit the original installer in the first instance or, if you are unable to or are not satisfied with their help, then contact us direct by phone on 1300 669122 or visit www.swd.com.au.