

# Fitting Instructions



## SKU

**T7P786**

## PRODUCT

**TAG Heavy Duty Towbar  
for LDV D90 Petrol & Diesel.**

## SPECIFICATIONS

- Towbar Class: CL 4 Heavy Duty
- Towing Capacity: 3100kg
- Tow ball Weight: 310kg
- Approx. Fitment Time: 90 Minutes



Scan for latest  
version of these  
instructions

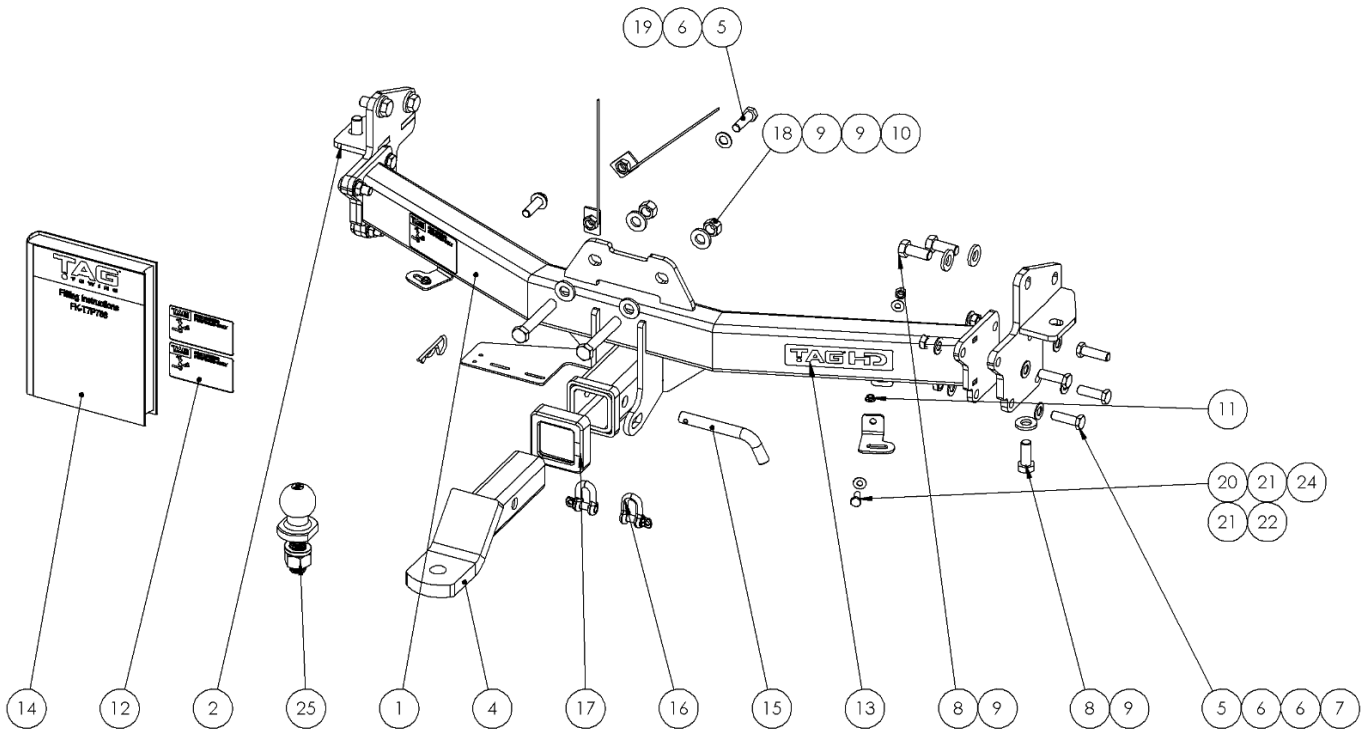
## TOOLS REQUIRED

- Spanners
- Sockets
- Air Saw or similar.
- Trim Removal Tool
- Torque Wrench

## IN THIS GUIDE

- Fitment Instructions
- Torque Settings
- Warranty Info

# Important Information



Item No.	Description	QTY.	Item No.	Description	QTY.
1	Welded Main Bar Assembly for T7P786	1	14	Fitting Instruction	1
2	Welded End Plate Assembly	1	15	Class 4 Pin & Clip	1
3	Welded End Plate Assembly DS	1	16	D-Shackle - 10mm. 1000kg	2
4	L4045S Uncoated Ball Mount	1	17	TAG Hitch Cover	1
5	M12 x 1.25 x 40 Bolt	10	18	M14 x 1.5 Nut	2
6	M12 Flat Washer	18	19	M12 x 1.25 Nut Plate on Wire - T7P786	2
7	M12 x 1.25 Nut	8	20	M8 x 1.25 x 20 Set Screw	2
8	M14 x 2 x 35 Bolt	6	21	M8 Flat Washer	4
9	M14 Flat Washer	10	22	M8 x 1.25 Nut	2
10	M14 x 1.5 x 90 Bolt	2	23	Adjustable Bumper Tab - T7P786	1
11	M6 x 1.0 Flange Serrated Nuts	2	24	Adjustable Bumper Tab DS - T7P786	1
12	TAG Compliance Sticker	3	25	50mm TAG Tow Ball - Chrome	1
13	TAG HD Sticker 150 x 33mm	1			

# Important Information



**ENSURE THAT THE FITTING INSTRUCTIONS ARE READ AND UNDERSTOOD PRIOR TO FITMENT  
PLACE THESE INSTRUCTIONS IN THE VEHICLE'S GLOVEBOX AFTER INSTALLATION IS COMPLETED**

## Warning:

- This product is for towing purposes only and must only be loaded as shown in your vehicle Owner's Manual.
- This towbar is NOT to be drilled, cut, welded, or modified in any way.
- All load ratings shown are under the assumption your trailer has a functional braking system.
- When installed in positions other than the one shown in these instructions the Tow Ball/ Tow Ball Mount may interfere or obstruct certain features of your vehicle (tailgate opening, Chassis clearance, Sensor Operation, etc.)

## General:

- Before fitting this towbar check installation hardware is included and correct.
- Check that the towbar is suitable for the vehicle make, model and year then make sure any changes to the vehicle design do not conflict with the fitting of this towbar. (Tray, Canopy, Suspension etc.)
- Check behind chassis rail and body panels before drilling to ensure no hazards are present (fuel lines, electrical wires etc.)
- After drilling, blow any filings clear, remove any swarf in and around the area and treat exposed metal with a suitable rust inhibitor.
- If this vehicle requires a bumper cut out, please check to make sure that your measurements are correct and clear before cutting any panels as some bumper profiles can change. If you are not sure, then please ask your towbar supplier
- To ensure the towbar is safe and secure it is the owners' responsibility that each fastener is torqued **every 1000km**. For any reason that the fasteners are not suitable for re-torquing it is the owners' responsibility to replace all fasteners on the towbar ensuring each fastener is of the same grade (8.8) and class as the originals. Failure to do so will diminish the towing capacity of the towbar and may result in the deterioration of the chassis of the vehicle. Contact an authorised TAG distributor or the TAG fitment centre if further information is required.

## Towbar Maintenance and Care:

It is recommended, when not in use, the Tow Ball Mount assembly and class 4 Pin and Clip is stored inside the car away from moisture to prevent standing water from forming rust. Inspect to ensure, on regular basis, fasteners are torqued to the specifications below and in good condition.

<i>Metric Bolt Torque Settings</i>										
Diameter	Pitch	Grade	Torque	Unit		Diameter	Pitch	Grade	Torque	Unit
M8	1.25	8.8	29	Nm		M12	1.25	10.9	125	Nm
M10	1.25	8.8	57	Nm		M12	1.50	10.9	105	Nm
M10	1.50	8.8	44	Nm		M14	1.25	10.9	195	Nm
M12	1.25	8.8	101	Nm		M14	1.50	10.9	165	Nm
M12	1.50	8.8	97	Nm		M16	1.25	10.9	295	Nm
M12	1.75	8.8	77	Nm		M16	1.50	10.9	250	Nm
M14	2.00	8.8	122	Nm		50mm Tow Ball	N/A	N/A	300	Nm
M16	2.00	8.8	190	Nm		70mm Tow Ball	N/A	N/A	750	Nm

# Installation Instructions



## Step 1: Remove Rear Bumper

- a. Lift the tailgate.
  - b. Lift the rear floor compartment cover and lower the spare wheel.
  - c. Remove 2x Torx head screws fastening the taillight assembly & remove hex bolts. Pull the taillight assembly rearward & disconnect wiring harness.
  - d. Remove 2x square bolt covers to expose phillips head screws. Remove the screws.
  - e. Remove 2x plastic scrivets from the wheel arch.
  - f. Remove 1x plastic scrivet & 1x bolt from behind the wheel arch on the bottom of the bumper.
  - g. Carefully dislodge the wheel arch flare/ molding to expose 2x Phillips screw. Remove screws.
  - h. Repeat steps c-g on opposite side.
  - i. Remove 2x M6 bolts from the rear underside of the bumper.
  - j. Disconnect the bumper harness under the PS rear of the bumper.
  - k. Retain all fasteners.
  - l. Beginning at each wheel arch gently unclip bumper from body and remove.
  - m. Disconnect the bumper harness from the top of the crash bar on PS.
  - n. Set bumper aside.
  - o. Remove the LH & RH steel bumper tab brackets from the body via 2x M6 bolts per side.
- Note: Retain the lower bumper tab bolts from (step i). They will be re-used. Discard the rest.**
- p. Remove both the LH & RH mufflers from their hangers to aid fitment of the towbar endplates.

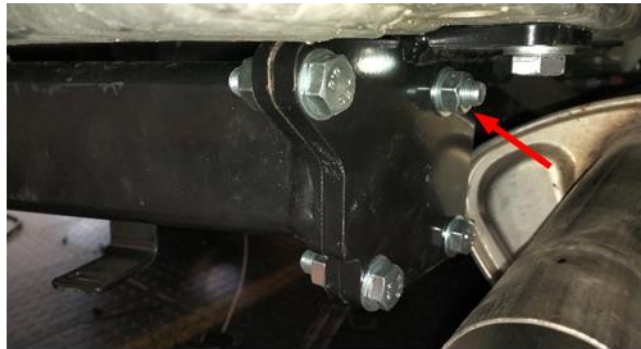


## Step 2: Fit Towbar

- Lift the endplate up to the inside face of the chassis and align holes. Loosely secure the end plate to the chassis with 3 x M14 x 2.0 x 35 bolts & flat washers. Repeat on opposite side.
- Lift the main bar up to the end plates and loosely secure with 4 x M12 x 1.25 x 40 bolts, flat washers & nuts. Repeat on opposite side.

**Note: Invert the top forward-most M12 crossmember bolt so that the nut is on the outside of the end plate otherwise it will foul on the head of the vertical chassis M14 x 2.0 bolt.**

- For Diesel Variants.** Loosely secure the main bar to the vehicle crossmember with 2x M14 x 1.5 x 90 bolts inserted from the rear face. Fasten with M14x 1.5 nuts & flat washers.
- For Petrol Variants.** Use the holes in the main bar upper plate as a guide and drill M12 holes into the vehicle crossmember. Insert the welded plates with M12 nuts into the chassis cross member via the large outer holes. Loosely secure with M12 x 1.25 x 40 bolts with flat washers.
- Beginning at the chassis, tighten all bolts according to the torque specification chart on page 3.
- Refit both the LH & RH mufflers onto their hangers.



# Installation Instructions



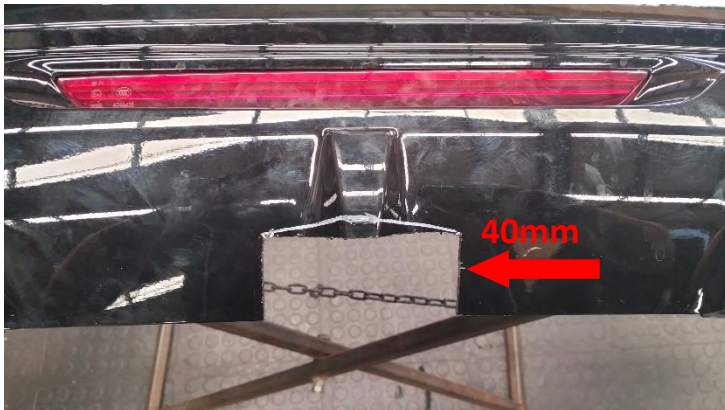
## Step 3: Cut Bumper

**Note:** The towbar installer is ultimately responsible for the location & quality of the bumper cut. To avoid mistakes, please use the following measurements as a guide only. We suggest making small incremental cuts and regularly test fit the bumper to ensure an accurate and tidy appearance. The additional application of rubber pinch-weld around the cut edge ensures a neat & tidy look.

- a. Establish the centre of the bumper.
- b. Mark the cut-out 90mm wide x 40mm deep from the bottom lip of the bumper.
- c. For late model vehicles with the raised projections, add an extra 10mm depth to the centre of the cutout. The top of the cutout will be a slight triangular shape to allow for the raised projection. See pictures.**
- d. Mark the inner bumper brake light supports each side of the light as shown. The cut will be an extension to the straight edge adjacent to each end of the bumper light. **The centre will also need to be trimmed away.**
- e. Cut the bumper & inner brake light support using an air hacksaw or other suitable cutting device.
- f. De-burr all cut edges.
- g. Refit bumper in reverse of steps 1c-m.
- h. Loosely secure the folded bumper tabs to the main assembly via 1x M8x 1.25 x 20 bolt with flat washers and nuts. Align the slotted hole with those of the bumper bar and loosely secure with the original bumper bolt and the provided M6 serrated flange nut. Repeat on opposite side. Tighten all the bolts.

**Note:** Dependent on the year model of the vehicle, the folded bumper tabs may need to be swapped from left to right and attached either to the front or rear face of the welded tabs on the main welded assembly.

- i. Raise spare tyre.

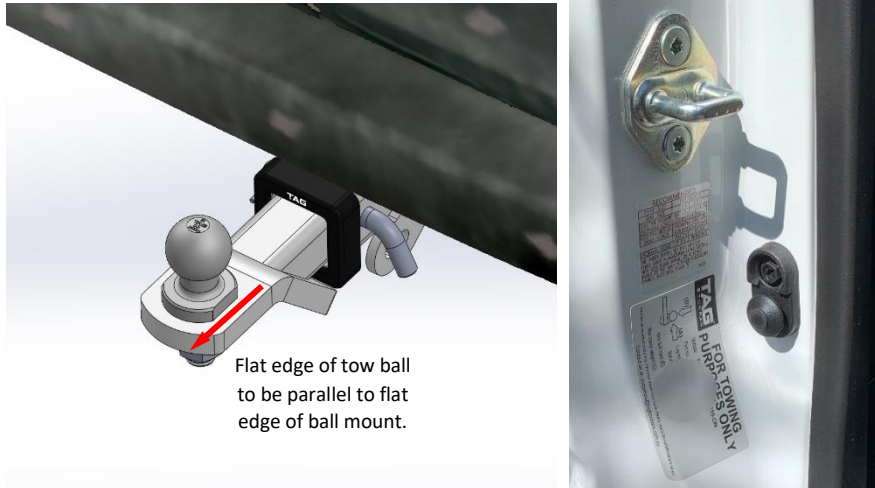


---

## Step 4: Complete Towbar & Apply Spare Compliance Label

---

- a. Attach TAG Hitch cover with rubber mallet carefully to prevent breaking.
- b. Attach the tow ball to the ball mount. The flat side of the tow ball **MUST BE** parallel to the outer edge of the ball mount. **Tighten the tow ball to 300Nm.**
- c. Insert the ball mount into the receiver and secure with the Pull pin and R-Clip. When not in use, secure the Ball Mount in a safe place inside your vehicle.
- d. Apply one of the compliance labels to the pillar of the driver's door. Place the remaining label and the fitting instructions in the vehicle handbook.



# TAG Warranty Statement



SWD warrants your TAG Towbar for its full product life under the following conditions:

- You can show proof of purchase.
- The towbar has been correctly installed by a suitably qualified installer.
- The towbar has not been modified or abused in any way and has only been used for the purpose intended.
- The towbar was not fitted second hand to your vehicle.

The extent of this warranty includes materials and workmanship used in the manufacture of the towbar and is to the equivalent value of current, full replacement cost.

Nothing stated or implied in this warranty limits in any way, the statutory rights that you may have.

To make a claim visit the original installer in the first instance or, if you are unable to or are not satisfied with their help, then contact us direct by phone on 1300 669122 or visit [www.swd.com.au](http://www.swd.com.au).