

Fitting Instructions



SKU

T7P738

PRODUCT

TAG Heavy Duty Towbar & Rear Step for Volkswagen Transporter (04/2003 - 06/2020)

SPECIFICATIONS

- Towbar Class: CL 4 Heavy Duty
- Towing Capacity: 2500kg
- Tow ball Weight: 100kg
- Approx. Fitment Time: 90 Minutes



Scan for latest
version of these
instructions

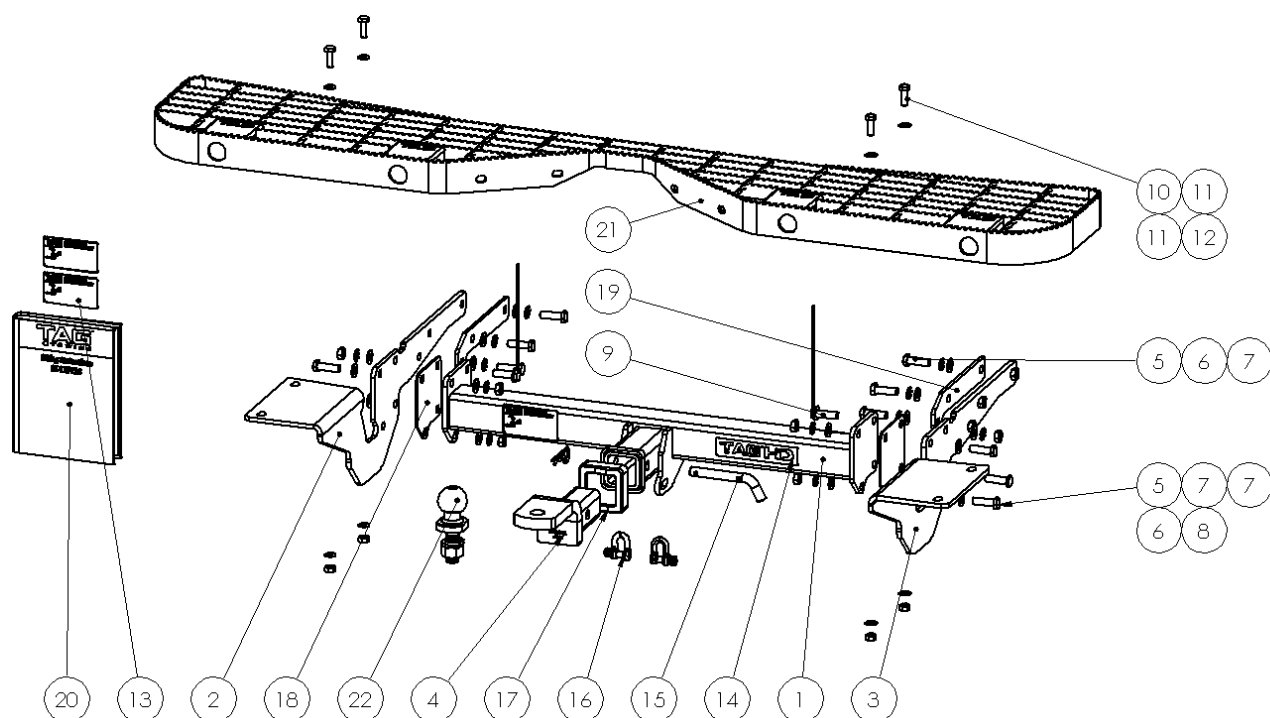
TOOLS REQUIRED

- Spanners
- Sockets
- Air Saw or similar.
- Trim Removal Tool
- Torque Wrench

IN THIS GUIDE

- Fitment Instructions
- Torque Settings
- Warranty Info

Towbar Assembly



Item No.	Description	QTY.	Item No.	Description	QTY.
1	Main Bar Assembly	1	12	M10 x 1.25 Nut	4
2	Welded End Plate Assembly	1	13	TAG Compliance Sticker	3
3	Welded End Plate Assembly DS	1	14	TAG HD Sticker 150 x 33mm	1
4	TAG Tow Ball Mount - L4120	1	15	Class 4 Pin & Clip	1
5	M12 x 1.25 x 40 Bolt	12	16	D-Shackle - 10mm. 1000kg	2
6	M12 Shakeproof Washer	14	17	TAG Hitch Cover	1
7	M12 Flat Washer	20	18	End Cap Spacer	2
8	M12 x 1.25 Nut	8	19	Fixing Plate	2
9	M12 x 1.25 x 40 bolt & flat washer on wire	2	20	Fitting Instruction	1
10	M10 x 30 x 1.25 Bolt	4	21	TAG Rear Step with Towing Relief	1
11	M10 Flat Washer	8	22	50mm TAG Tow Ball with Flat edge	1

Important Information



Warning:

- This product is for towing purposes only and must only be loaded as shown in your vehicle Owner's Manual.
- This towbar is NOT to be drilled, cut, welded, or modified in any way.
- Check behind chassis rail and body panels before drilling to ensure no hazards are present.
- All load ratings shown are under the assumption your trailer has a functional braking system installed.
- When installed in positions other than the one depicted in these instructions the Tow Ball Mount may interfere or obstruct certain features of your vehicle (tailgate opening, Chassis clearance, etc.)

General:

- Before fitting this towbar read fitting instructions and check installation hardware is correct.
- Check that the towbar is suitable for the vehicle and be wary of any changes to the vehicle design that may conflict with the fitting of this towbar. (Tray, Canopy, Suspension etc.)
- After drilling, blow any filings clear, remove any burrs and treat exposed metal with a rust inhibitor.
- The high tensile fasteners supplied with this product are an integral feature to achieving the specified rating, if replacement is required ensure that fasteners of the same grade (8.8) & quality are used. Contact an authorised TAG distributor or the TAG fitment center - (07) 3208 3022 - if further information is required.

Towbar Maintenance and Care:

It is recommended, when not in use, that the Tow Ball Mount assembly and class 4 Pin and Clip is stored inside the car away from moisture to prevent standing water from forming rust. Inspect to ensure, on regular basis, fasteners are torqued to the specifications below and in good condition.

Ensure that the fitting instructions are read and understood prior to fitment, Following the fitment place these instructions in the vehicle's glovebox after installation is completed.

Metric Bolt Torque Settings

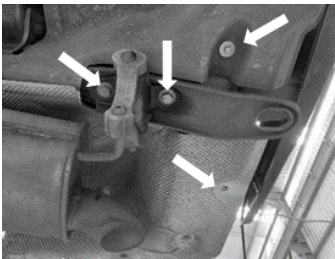
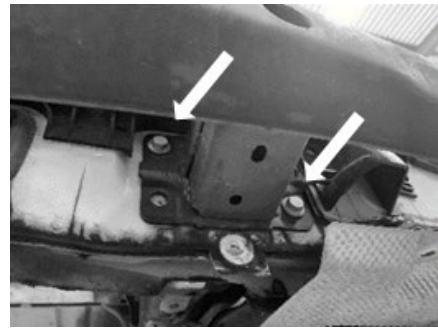
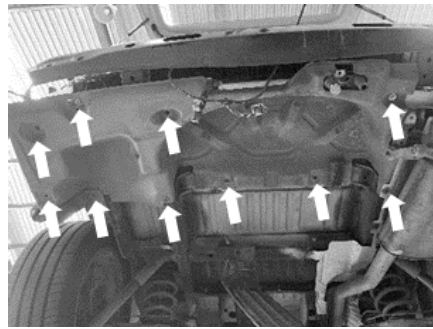
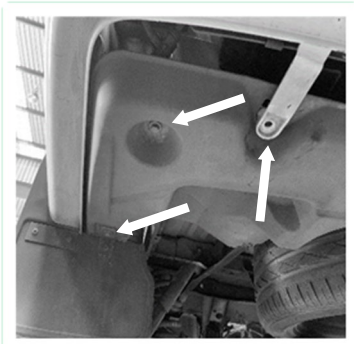
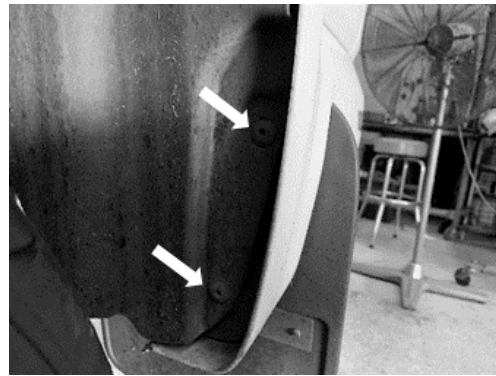
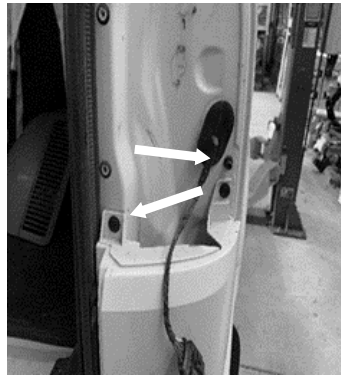
Diameter	Pitch	Grade	Torque	Unit		Diameter	Pitch	Grade	Torque	Unit
M8	1.25	8.8	29	Nm		M12	1.25	10.9	125	Nm
M10	1.25	8.8	57	Nm		M12	1.50	10.9	105	Nm
M10	1.50	8.8	44	Nm		M14	1.25	10.9	195	Nm
M12	1.25	8.8	101	Nm		M14	1.50	10.9	165	Nm
M12	1.50	8.8	97	Nm		M16	1.25	10.9	295	Nm
M12	1.75	8.8	77	Nm		M16	1.50	10.9	250	Nm
M14	2.00	8.8	122	Nm		50mm Tow Ball	N/A	N/A	300	Nm
M16	2.00	8.8	190	Nm		70mm Tow Ball	N/A	N/A	750	Nm

Installation Instructions



Step 1: Remove Rear Bumper

- a) Open Tail Gate.
- b) Remove the spare tire:
- c) Remove 2x Torx screws securing each taillight, and push taillights outwards to remove.
- d) Remove 2x scrivenets securing the bumper from behind the taillights on each side.
- e) Remove 2x Torx screws from inside the rear of each wheel arch.
- f) Underneath the vehicle remove 2x screws and 1 push rivet from each side.
- g) Remove rear bumper.
- h) Remove 2 bolts to remove the factory shipping hook.
- i) Remove 5x screws to detach spare wheel under tray, 2x heat shield clips also need to be removed.
- j) Remove impact beam by removing 4x bolts.
- k) Set aside all parts removed above for reattachment.

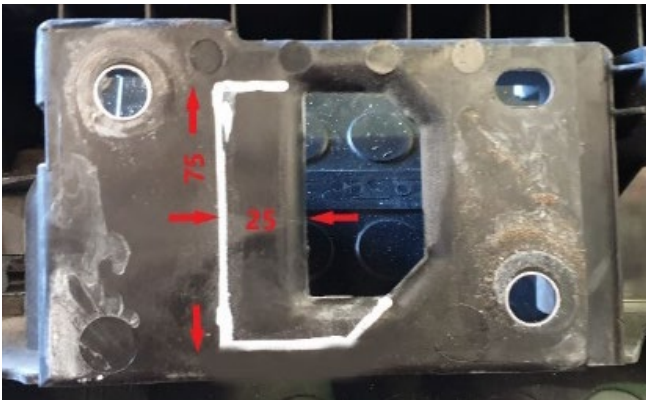


Installation Instructions



Step 2: Trim Plastic Crash Bar

- a. With a felt tip pen, mark the flat body mounting side of the plastic crash bar and trim. Repeat on each side.
- b. Loosely fit plastic crash bar using original bolts.
- c. Insert towbar endplates into chassis and fasten loosely with 2x M12 bolts per side.
- d. Lift main bar up to endplates and align top forward most holes of the main bar to the rear most top holes of the endplates. Insert 1x M12 bolt each side temporarily.
- e. Rotate bar & using a felt tip pen, mark the plastic crash bar using the topmost edge of the main bar as a guide.
- f. Remove chassis mounting plates, main bar & crash bar. Trim away the lower section of the marked crash bar with air saw or similar.
- g. Refit crash bar.

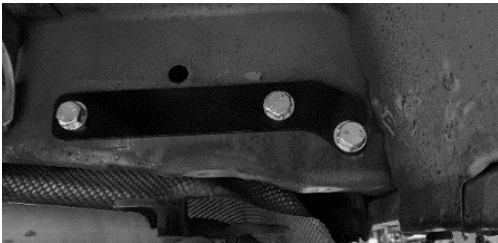


Installation Instructions



Step 3: Fit Towbar

- a. Insert endplates into chassis.
- b. Insert M12 bolts with washers into 6mm steel plates and loosely fasten the towbar end plates to the inside of the chassis.
- c. Position the Towbar centre section between the two end plates.
 - If there is more than approx. 3mm clearance between the parts on each side, then spacers will be required.
 - If the clearance is less than this, spacers will not be required between the parts.
- d. Loosely secure the towbar centre section between the end plates with M12 bolts washers, & nuts. The bolt & washer on wire is required for the forward most top hole.
- e. Tighten all bolts.
- f. Apply several layers of tape or similar on forward most edge of each step mount to protect the bumper when reinstalling.



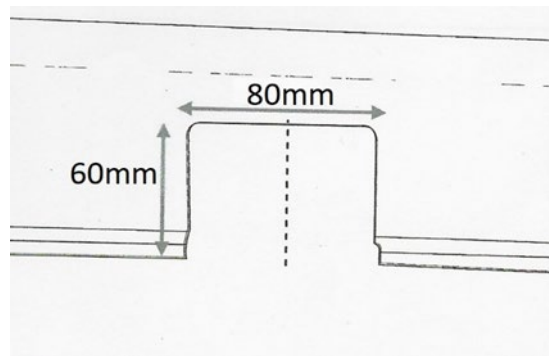
Installation Instructions



Step 4: Cut Bumper

Note: The towbar installer is ultimately responsible for the location & quality of the bumper cut. To avoid mistakes, please use the following measurements as a guide only. We suggest making small incremental cuts and regularly test-fitting the bumper to ensure an accurate and tidy appearance. The additional application of rubber pinch-weld around the cut edge ensures a neat & tidy look.

- a. Establish the centre of the bumper.
- b. Mark the cut-out 80mm wide x 60mm deep from the bottom lip of the bumper. See diagram.
- c. Cut the bumper using an air hacksaw or other suitable cutting device.
- d. De-burr all cut edges.
- e. Refit bumper in reverse of steps 1.
- f. Mount the galvanized step onto the brackets. Insert M10x 30 bolts with washers & nuts.
- g. Align with vehicle and tighten all bolts.



Installation Instructions



Step 5: Complete Towbar

- a. Attach TAG Hitch cover with rubber mallet carefully to prevent breaking.
- b. Attach Tow ball to Ball Mount and slide hitch into towbar and secure with Pin and Clip if you are going to tow straight away, alternatively secure Ball Mount in a safe place inside your car.
- c. Apply one of the compliance labels to the pillar of the driver's door. Leave the remaining label and the fitting instructions in the vehicle handbook.



TAG Warranty Statement



SWD warrants your TAG Towbar for its full product life under the following conditions:

- You can show proof of purchase.
- The towbar has been correctly installed by a suitably qualified installer.
- The towbar has not been modified or abused in any way and has only been used for the purpose intended.
- The towbar was not fitted second hand to your vehicle.

The extent of this warranty includes materials and workmanship used in the manufacture of the towbar and is to the equivalent value of current, full replacement cost.

Nothing stated or implied in this warranty limits in any way, the statutory rights that you may have.

To make a claim visit the original installer in the first instance or, if you are unable to or are not satisfied with their help, then contact us direct by phone on 1300 669122 or visit www.swd.com.au.