

Fitting Instructions



SKU

T4JA43

PRODUCT

**TAG Heavy Duty Towbar
for BYD Sealion 7 02/25-on**

SPECIFICATIONS

- Towbar Class: CL 4 Heavy Duty
- Towing Capacity: 1500kg
- Tow ball Weight: 150kg
- Approx. Fitment Time: 60 Minutes



Scan for latest
version of these
instructions

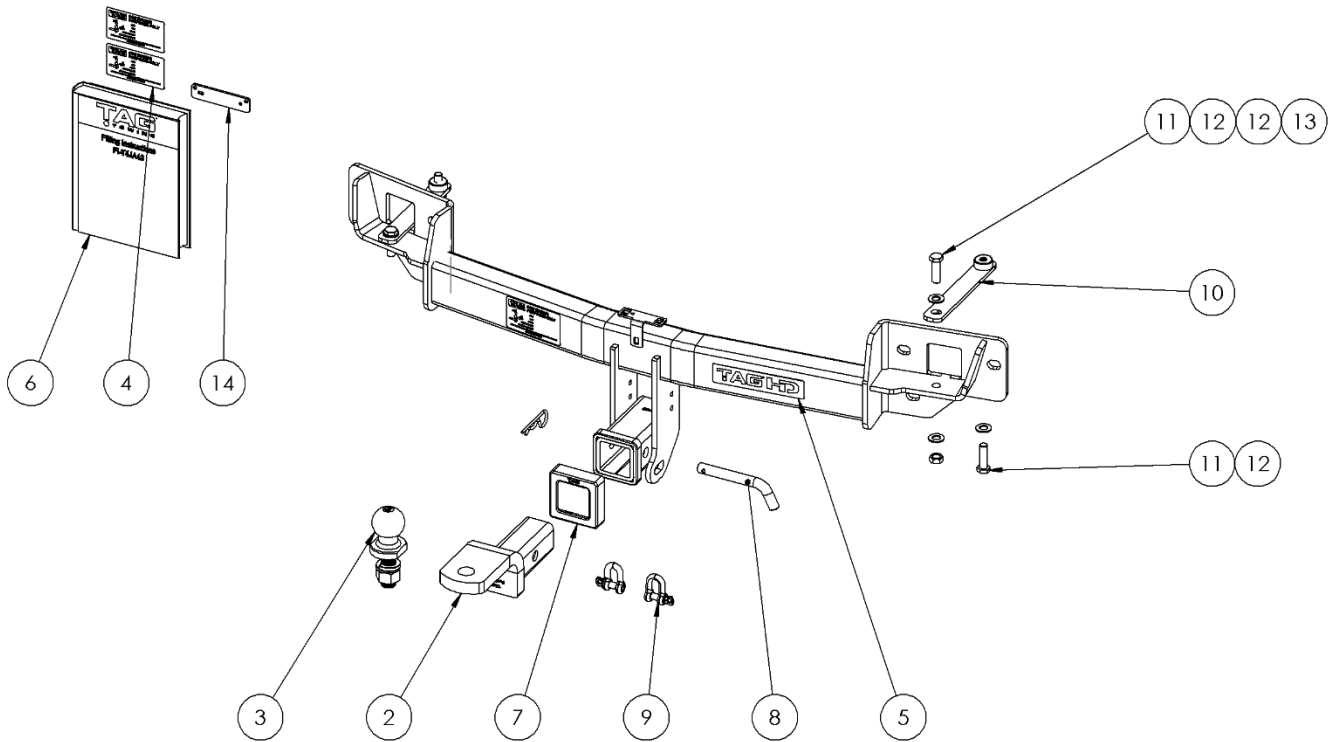
TOOLS REQUIRED

- Spanners
- Sockets
- Air Saw or similar.
- Trim Removal Tool
- Torque Wrench

IN THIS GUIDE

- Fitment Instructions
- Torque Settings
- Warranty Info

Towbar Assembly



Item No.	Description	QTY.	Item No.	Description	QTY.
1	Welded Assembly -T4JA43	1	8	Class 4 Pin & Clip	1
2	TAG Tow Ball Mount - L4120	1	9	D-Shackle - 10mm. 1000kg	2
3	50mm TAG Tow Ball - Chrome	1	10	Plate w/ Threaded Boss (M12 x 1.25)	2
4	Compliance Label	3	11	M12 x 1.25 x 40 Bolt	4
5	TAG HD Sticker 150 x 33mm	1	12	M12 Flat Washer	6
6	Fitting Instruction	1	13	M12 x 1.25 Nut	2
7	TAG Hitch Cover	1	14	Backing Plate - 7 Pin Flat Connector	1

Important Information



**ENSURE THAT THE FITTING INSTRUCTIONS ARE READ AND UNDERSTOOD PRIOR TO FITMENT
PLACE THESE INSTRUCTIONS IN THE VEHICLE'S GLOVEBOX AFTER INSTALLATION IS COMPLETED**

Warning:

- This product is for towing purposes only and must only be loaded as shown in your vehicle Owner's Manual.
- This towbar is NOT to be drilled, cut, welded, or modified in any way.
- All load ratings shown are under the assumption your trailer has a functional braking system.
- When installed in positions other than the one shown in these instructions the Tow Ball/ Tow Ball Mount may interfere or obstruct certain features of your vehicle (tailgate opening, Chassis clearance, Sensor Operation, etc.)

General:

- Before fitting this towbar check installation hardware is included and correct.
- Check that the towbar is suitable for the vehicle make, model and year then make sure any changes to the vehicle design do not conflict with the fitting of this towbar. (Tray, Canopy, Suspension etc.)
- Check behind chassis rail and body panels before drilling to ensure no hazards are present (fuel lines, electrical wires etc.)
- After drilling, blow any filings clear, remove any swarf in and around the area and treat exposed metal with a suitable rust inhibitor.
- If this vehicle requires a bumper cut out, please check to make sure that your measurements are correct and clear before cutting any panels as some bumper profiles can change. If you are not sure, please ask your towbar supplier.
- To ensure the towbar is safe and secure, it is the owners' responsibility that each fastener is torqued **at 1000km intervals**. If for any reason, a fastener is not suitable for re-torquing, it is the owners' responsibility to replace it to ensure it is of the same grade (8.8) and class as the original. Failure to do so will diminish the towing capacity of the towbar and may result in the deterioration of the chassis of the vehicle. Contact an authorised TAG distributor or the TAG fitment centre if further information is required.

Towbar Maintenance and Care:

It is recommended, when not in use, the Tow Ball Mount assembly and class 4 Pin and Clip is stored inside the car away from moisture to prevent standing water from forming rust. Inspect to ensure, on regular basis, fasteners are torqued to the specifications below and in good condition.

<i>Metric Bolt Torque Settings</i>										
Diameter	Pitch	Grade	Torque	Unit		Diameter	Pitch	Grade	Torque	Unit
M8	1.25	8.8	29	Nm		M12	1.25	10.9	125	Nm
M10	1.25	8.8	57	Nm		M12	1.50	10.9	105	Nm
M10	1.50	8.8	44	Nm		M14	1.25	10.9	195	Nm
M12	1.25	8.8	101	Nm		M14	1.50	10.9	165	Nm
M12	1.50	8.8	97	Nm		M16	1.25	10.9	295	Nm
M12	1.75	8.8	77	Nm		M16	1.50	10.9	250	Nm
M14	2.00	8.8	122	Nm		50mm Tow Ball	N/A	N/A	300	Nm
M16	2.00	8.8	190	Nm		70mm Tow Ball	N/A	N/A	750	Nm

Installation Instructions



Step 1: Remove Rear Bumper

- a. Lift the tailgate.
- b. Remove 5 xmas tree panel retainers from the plastic cover from the plastic cover beside the tailgate. (1 is located on the face adjacent to the door strut). Repeat on opposite side.
- c. Remove the plastic covers rearward being careful of the hidden panel retainer clips beneath.



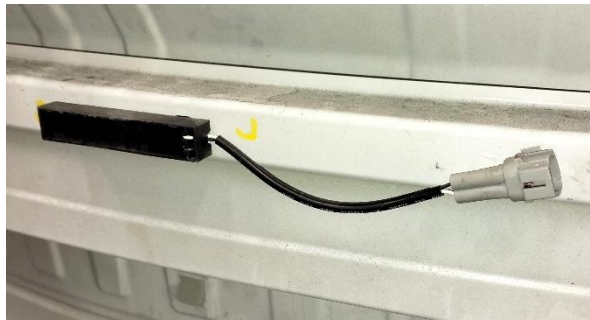
- d. Remove 1x M6 bolt retaining the bumper. Repeat on opposite side. ●10
- e. On the bottom face of the bumper behind the wheel arches, remove 2x small hex head screws. ●8
- f. Remove a 3rd screw halfway between the wheel arch and rear corner of the bumper. Repeat on opposite side. ●8
- g. Carefully pry the wheel arch liner out from behind the wheel arch trim.
- h. Beginning at the bottom of the wheelarch, carefully detach the trim from the bumper. A little force may be required to detach the clips. Detach the trim retainer clips from the body panel just rearward of the door to avoid creasing the wheel arch trim.
- i. Remove 2x panhead screws fastening the bumper and 2x panhead⊗ screws fastening the wheelarch to the body. Retain all fasteners. Repeat steps (e-i) on opposite side.



Installation Instructions

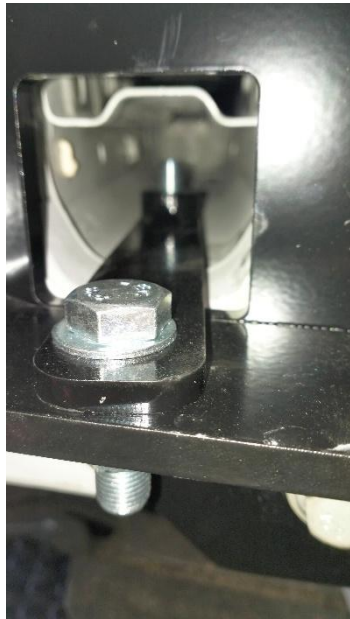


- j. On the bottom of the bumper remove all M6 bolts fastening the bumper to the under-carriage protector. Retain all fasteners.
- k. Beginning at each wheel arch, carefully peel the bumper from the body retainers.
- l. With a little force, release the bumper from the retainers below the tailgate opening.
- m. Remove the bumper rearward, disconnect the bumper harness & auxiliary plug at the top PS of the crash bar and the remote key sensor from the top centre. Set bumper aside.
- n. Remove the remote key sensor from the top centre of the crash bar.
- o. Remove the crash bar from the rear panel via 6x M14 bolts & 2x M14 nuts. ●19 Discard the crash bar and M14 nuts.



Step 2: Fit Towbar

- Lift the bar up to the rear panel and loosely fasten with the original M14 bolts. ●19
- Insert the internal chassis plate into chassis cavity and align the hole rear hole with the towbar. Loosely fasten with M12x 1.25x 40 bolt with flat washer and nut. ●18
- Under the vehicle, insert 1x M12x1.25 bolt with flat plate into the hole of chassis and internal chassis plate.
- Beginning at the rear panel, tighten all M14 fasteners, followed by the M12 fasteners to the torque specification on page 3.



Installation Instructions



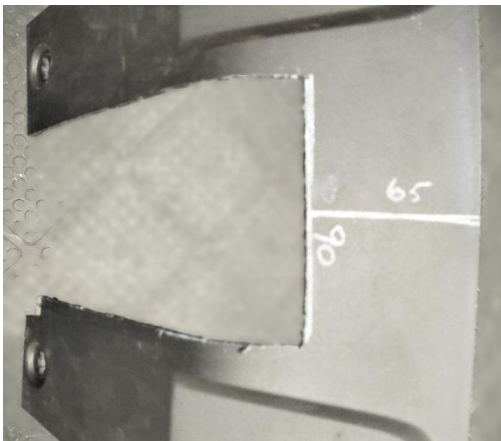
Step 3: Cut Bumper

Note: The towbar installer is ultimately responsible for the location & quality of the bumper cut. To avoid mistakes, please use the following measurements as a guide only. We suggest making small incremental cuts and regularly test fit the bumper to ensure an accurate and tidy appearance. The additional application of rubber pinch-weld around the cut edge ensures a neat & tidy look.

- Remove the lower centre cover from the bumper via 3x ¼ turn fasteners. Retain 2x fasteners. ☹
- Establish & mark the centerline of the bumper.
- Mark the cut-out 90mm wide x 20mm from the cover insert feature of the bumper. See the pictures.



- Cut the bumper using an air hacksaw or other suitable cutting device.
- De-burr all cut edges.
- Refit bumper in reverse of steps 1(a-m).
- Establish & mark the centerline of the lower bumper cover.
- Measure 65mm down from the top edge of the cover and measure 45mm either side.
- Cut the cover using an air hacksaw or other suitable cutting device.
- De-burr all cut edges

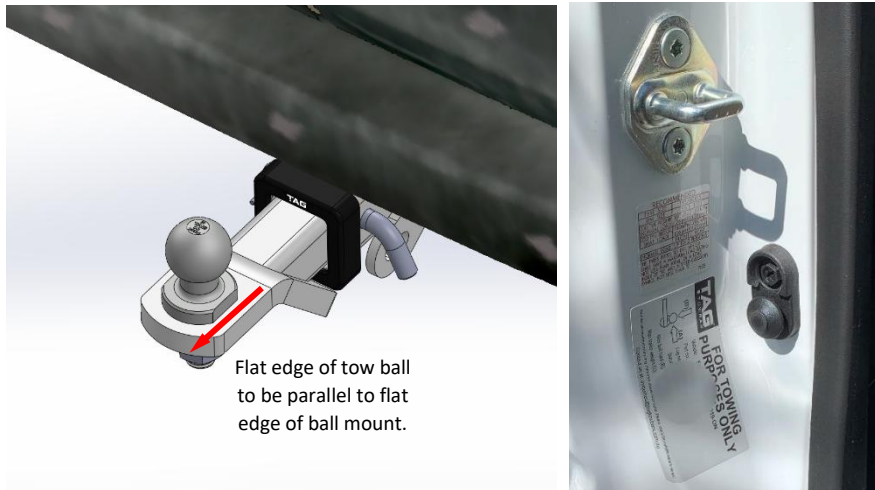


Installation Instructions



Step 4: Complete Towbar & Apply Spare Compliance Label

- a. Attach TAG Hitch cover with rubber mallet carefully to prevent breaking.
- b. Attach the tow ball to the ball mount. The flat side of the tow ball **MUST BE** parallel to the outer edge of the ball mount. **Tighten the tow ball to 300Nm.**
- c. Insert the Tow Ball Mount into the receiver and secure with the Pull pin and R-Clip. When not in use, secure the Ball Mount in a safe place inside your vehicle.
- d. Apply one of the compliance labels to the pillar of the driver's door. Place the remaining label and the fitting instructions in the vehicle handbook.



TAG Warranty Statement



SWD warrants your TAG Towbar for its full product life under the following conditions:

- You can show proof of purchase.
- The towbar has been correctly installed by a suitably qualified installer.
- The towbar has not been modified or abused in any way and has only been used for the purpose intended.
- The towbar was not fitted second hand to your vehicle.

The extent of this warranty includes materials and workmanship used in the manufacture of the towbar and is to the equivalent value of current, full replacement cost.

Nothing stated or implied in this warranty limits in any way, the statutory rights that you may have.

To make a claim visit the original installer in the first instance or, if you are unable to or are not satisfied with their help, then contact us direct by phone on 1300 669122 or visit www.swd.com.au.