

Fitting Instructions



SKU

T4JA34

PRODUCT

TAG Heavy Duty Towbar for BYD Seal 10/23-on

SPECIFICATIONS

- Towbar Class: CL 4 Heavy Duty
- Towing Capacity: 1500kg
- Tow ball Weight: 150kg
- Approx. Fitment Time: 60 Minutes



Scan for latest
version of these
instructions

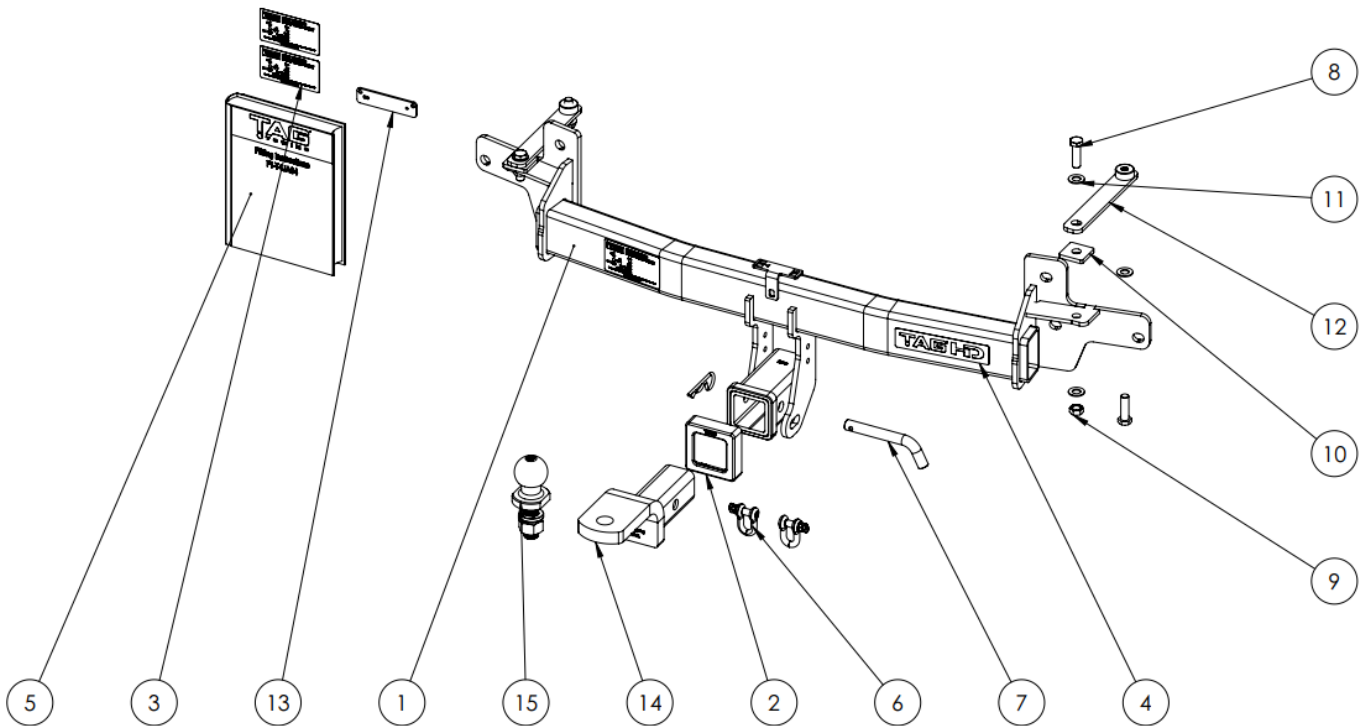
TOOLS REQUIRED

- Spanners
- Sockets
- Air Saw or similar.
- Trim Removal Tool
- Torque Wrench

IN THIS GUIDE

- Fitment Instructions
- Torque Settings
- Warranty Info

Towbar Assembly



Item No.	Description	QTY.	Item No.	Description	QTY.
1	Weld Assembly T4JA34	1	9	M12 x 1.25 Nut	2
2	TAG Hitch Cover	1	10	Top Plate - 40x40x6	2
3	Compliance Label	3	11	M12 Flat Washer	6
4	TAG HD Sticker	1	12	Plate w/ Threaded Boss (M12 x 1.25)	2
5	Fitting Instruction	1	13	Backing Plate - 7 Pin Flat	1
6	D-Shackle - 10mm. 1000kg	2	14	TAG Tow Ball Mount - L4120	1
7	Class 4 Pin & Clip	1	15	50mm TAG Tow Ball - Chrome	1
8	M12 x 1.25 x 40 Bolt	4			

Important Information



**ENSURE THAT THE FITTING INSTRUCTIONS ARE READ AND UNDERSTOOD PRIOR TO FITMENT
PLACE THESE INSTRUCTIONS IN THE VEHICLE'S GLOVEBOX AFTER INSTALLATION IS COMPLETED**

Warning:

- This product is for towing purposes only and must only be loaded as shown in your vehicle Owner's Manual.
- This towbar is NOT to be drilled, cut, welded, or modified in any way.
- All load ratings shown are under the assumption your trailer has a functional braking system.
- When installed in positions other than the one shown in these instructions the Tow Ball/ Tow Ball Mount may interfere or obstruct certain features of your vehicle (tailgate opening, Chassis clearance, Sensor Operation, etc.)

General:

- Before fitting this towbar check installation hardware is included and correct.
- Check that the towbar is suitable for the vehicle make, model and year then make sure any changes to the vehicle design do not conflict with the fitting of this towbar. (Tray, Canopy, Suspension etc.)
- Check behind chassis rail and body panels before drilling to ensure no hazards are present (fuel lines, electrical wires etc.)
- After drilling, blow any filings clear, remove any swarf in and around the area and treat exposed metal with a suitable rust inhibitor.
- If this vehicle requires a bumper cut out, please check to make sure that your measurements are correct and clear before cutting any panels as some bumper profiles can change. If you are not sure, please ask your towbar supplier.
- To ensure the towbar is safe and secure, it is the owners' responsibility that each fastener is torqued **at 1000km intervals**. If for any reason, a fastener is not suitable for re-torquing, it is the owners' responsibility to replace it to ensure it is of the same grade (8.8) and class as the original. Failure to do so will diminish the towing capacity of the towbar and may result in the deterioration of the chassis of the vehicle. Contact an authorised TAG distributor or the TAG fitment centre if further information is required.

Towbar Maintenance and Care:

It is recommended, when not in use, the Tow Ball Mount assembly and class 4 Pin and Clip is stored inside the car away from moisture to prevent standing water from forming rust. Inspect to ensure, on regular basis, fasteners are torqued to the specifications below and in good condition.

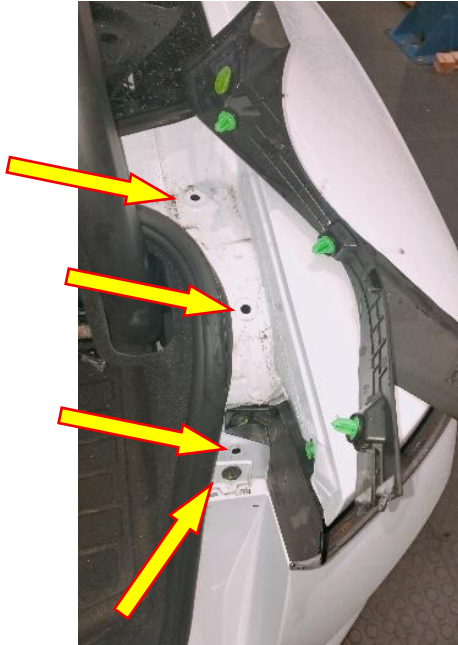
<i>Metric Bolt Torque Settings</i>										
Diameter	Pitch	Grade	Torque	Unit		Diameter	Pitch	Grade	Torque	Unit
M8	1.25	8.8	29	Nm		M12	1.25	10.9	125	Nm
M10	1.25	8.8	57	Nm		M12	1.50	10.9	105	Nm
M10	1.50	8.8	44	Nm		M14	1.25	10.9	195	Nm
M12	1.25	8.8	101	Nm		M14	1.50	10.9	165	Nm
M12	1.50	8.8	97	Nm		M16	1.25	10.9	295	Nm
M12	1.75	8.8	77	Nm		M16	1.50	10.9	250	Nm
M14	2.00	8.8	122	Nm		50mm Tow Ball	N/A	N/A	300	Nm
M16	2.00	8.8	190	Nm		70mm Tow Ball	N/A	N/A	750	Nm

Installation Instructions



Step 1: Remove Bumper

- a. Lift the boot.
- b. At the outside of the boot opening there is a plastic cover on each side which begins just below the rear window and ends above the bumper and beside the taillight. It covers an M6 bolt which must be removed. ●10
- c. Beginning at the top, below the rear window, gently pull the cover upward to release the 2x vertical trim clips underneath. Continue to separate the cover from the body. Gently dislodge it rearwards for the bottom most clip and the 2x plastic teeth which extend vertically into the top of the bumper. Repeat on the opposite side.
- d. Remove the exposed M6 bolts fastening the bumper to the body. ●10



- e. At the wheel arch locate and remove 2x phillips head screws. Retain the fasteners as well as the triangular plastic retainer from the top screw. ⊗
- f. Remove 1x M6 bolt from behind the wheel arch on the bottom of the bumper. Repeat on opposite side. ●10
- g. Remove 5x M6 bolts from the bottom rear edge of the bumper. ●10
- h. Beginning at each wheel arch gently unclip bumper from body and remove rearwards.
- i. Disconnect the bumper harness (2x plugs) from the body on the passenger side and 1x plug in the middle on the crash bar (key sensor).
- j. Set bumper aside.
- k. Remove the key sensor from the crash bar and retain. Take note of its orientation for later fitment.
- l. Remove the crash bar via 3x M14 bolts and 1x M14 nut per side. ●19 **Retain 4x of the original bolts and the nuts.**

Step 2: Fit Towbar

- a. Lift the bar up to the chassis and over the chassis studs. Loosely fasten with the original M14x 1.5 nuts and the remaining M14x 1.5 bolts. ●19
- b. Insert the internal chassis plate inside the chassis hole until the bolt aligns to the vertical hole of the chassis. PS hole is just rearward of a break-out harness connector. Fasten loosely with 1x M12x 40 bolt. Repeat on opposite side.
- c. Insert the 6mm top plate between the internal chassis plate and the endplate of the towbar assembly.
- d. Insert the remaining M12 bolts into the vertical holes of the towbar endplate. ●18
- e. Following the guide below, tighten all fasteners to the torque specification on page 3.
- f. **Begin with the lower M14 bolts & nuts on the rear panel followed by the top-most M14 bolts.**
- g. **Finally, tighten the M12 bolts on the internal chassis plates.**



- h. Re-fit the key sensor to the top of the towbar assembly in the same orientation as originally fitted to the crash bar.

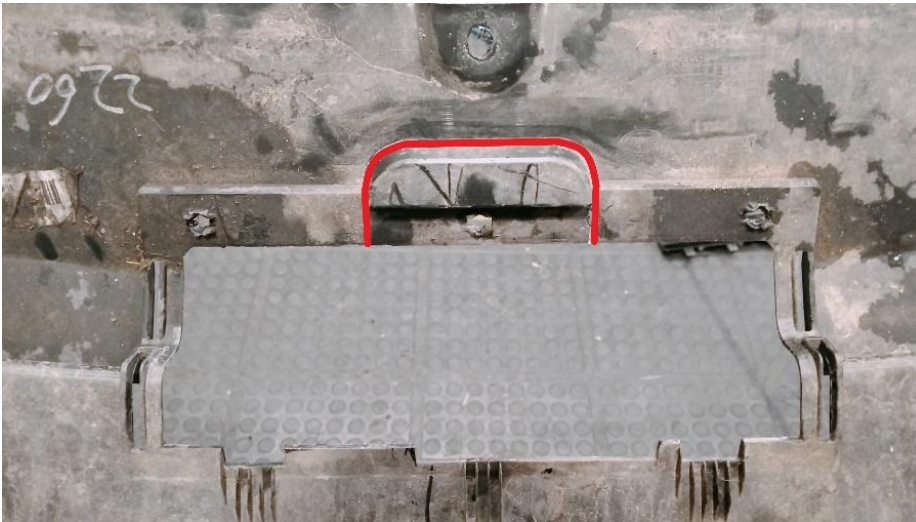
Installation Instructions



Step 3: Cut Bumper

Note: The towbar installer is ultimately responsible for the location & quality of the bumper cut. To avoid mistakes, please use the following measurements as a guide only. We suggest making small incremental cuts and regularly test fit the bumper to ensure an accurate and tidy appearance. The additional application of rubber pinch-weld around the cut edge ensures a neat & tidy look.

- Remove the small pull-out section of the bumper & retain for the owner.
- Using an air hacksaw or other suitable cutting device, remove the handle-like shape from the rear of the hole by following around the outside of the shape.



- De-burr all cut edges.
- Inside the bumper, remove the lower, inner-most mounting tab of the light housing. Remove the m6 bolt and discard. Use an air hacksaw or other suitable cutting device. See photo.



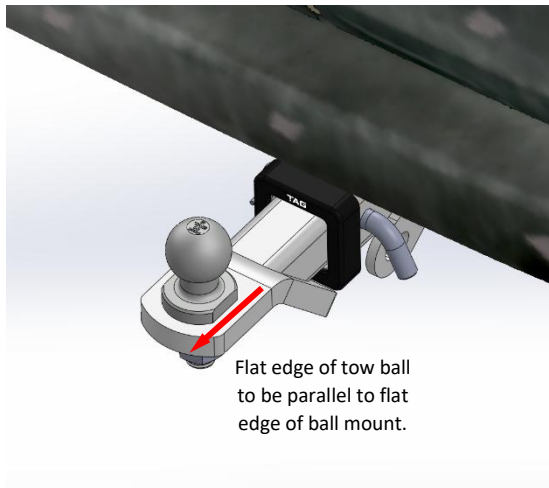
- Refit bumper in reverse of steps 1(a-j).
- Mount the trailer plug to the bumper on the PS of the receiver using the provided backing plate on the inside.

Installation Instructions



Step 4: Complete Towbar & Apply Spare Compliance Label

- a. Attach TAG Hitch cover with rubber mallet carefully to prevent breaking.
- b. Attach the tow ball to the ball mount. The flat side of the tow ball **MUST BE** parallel to the outer edge of the ball mount. **Tighten the tow ball to 300Nm.**
- c. Insert the Tow Ball Mount into the receiver and secure with the Pull pin and R-Clip. When not in use, secure the Ball Mount in a safe place inside your vehicle.
- d. Apply one of the compliance labels to the pillar of the driver's door. Place the remaining label and the fitting instructions in the vehicle handbook.



TAG Warranty Statement



SWD warrants your TAG Towbar for its full product life under the following conditions:

- You can show proof of purchase.
- The towbar has been correctly installed by a suitably qualified installer.
- The towbar has not been modified or abused in any way and has only been used for the purpose intended.
- The towbar was not fitted second hand to your vehicle.

The extent of this warranty includes materials and workmanship used in the manufacture of the towbar and is to the equivalent value of current, full replacement cost.

Nothing stated or implied in this warranty limits in any way, the statutory rights that you may have.

To make a claim visit the original installer in the first instance or, if you are unable to or are not satisfied with their help, then contact us direct by phone on 1300 669122 or visit www.swd.com.au.