

# Fitting Instructions



## SKU

**T4JA30**

## PRODUCT

**TAG Heavy Duty Towbar  
for  
BYD Atto 3**

## SPECIFICATIONS

- Towbar Class: CL 4 Heavy Duty
- Towing Capacity: 750kg
- Tow ball Weight: 125kg
- Approx. Fitment Time: 60 Minutes



Scan for latest  
version of these  
instructions

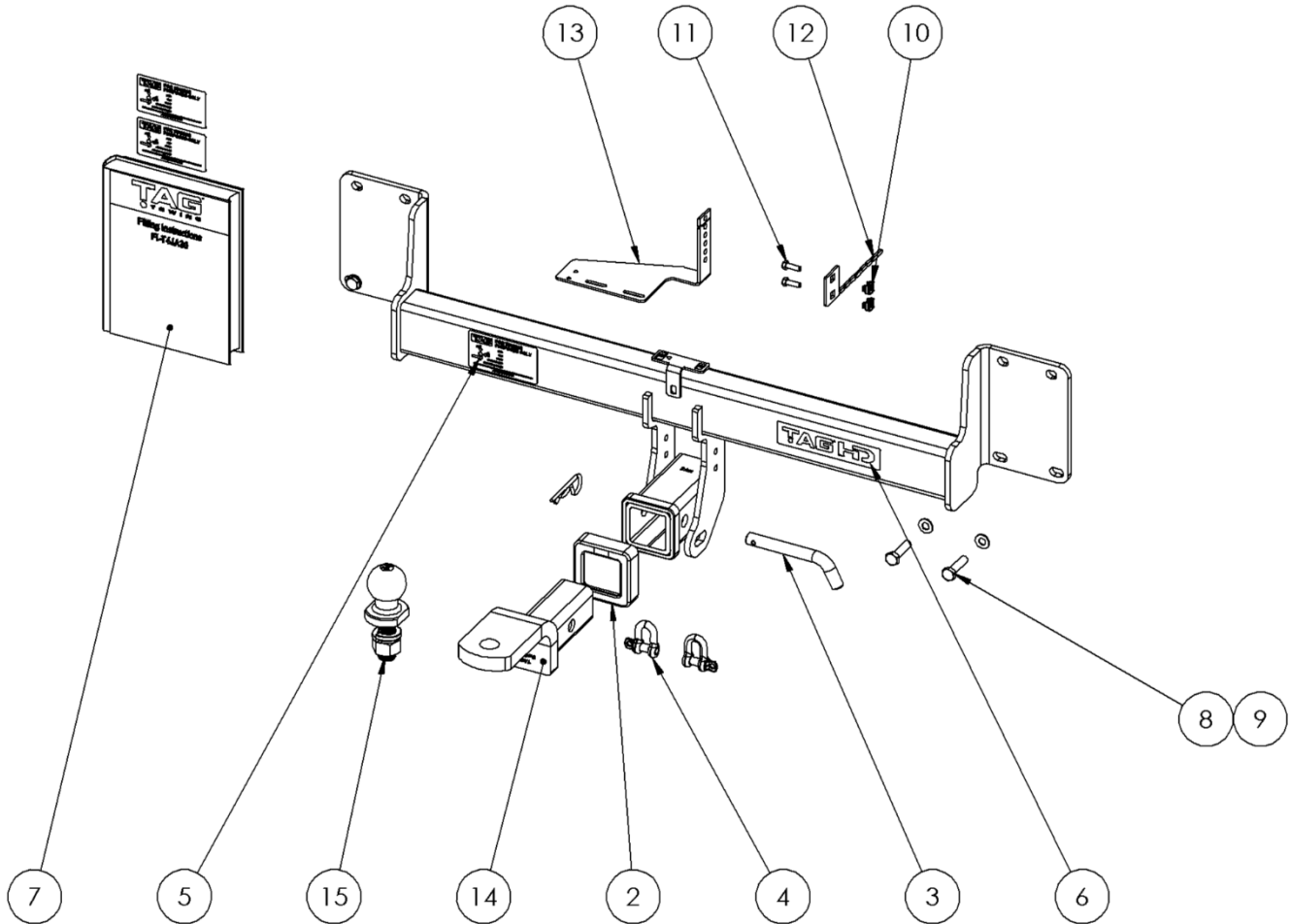
## TOOLS REQUIRED

- Spanners
- Sockets
- Air Saw or similar.
- Trim Removal Tool
- Torque Wrench

## IN THIS GUIDE

- Fitment Instructions
- Torque Settings
- Warranty Info

# Towbar Assembly



Item No.	Description	QTY.	Item No.	Description	QTY.
1	Weld Assembly T4JA30	1	8	M10 X 40 X 1.25 Bolt	4
2	TAG Hitch Cover	1	9	M10 Flat Washer	4
3	Class 4 Pin & Clip	1	10	Cage Nut M6 X 1.0	2
4	D-Shackle - 10mm. 1000kg	2	11	M6 X1.0 X 20 Set Screw	2
5	Compliance Label	3	12	Cage Nut Fastening Plate	1
6	TAG HD Sticker 150 x 33mm	1	13	Plug Mount - T4JA34	1
7	Fitting Instruction	1	14	TAG Tow Ball Mount - L4120	1
			15	50mm TAG Tow Ball - Chrome	1

# Important Information



**ENSURE THAT THE FITTING INSTRUCTIONS ARE READ AND UNDERSTOOD PRIOR TO FITMENT  
PLACE THESE INSTRUCTIONS IN THE VEHICLE'S GLOVEBOX AFTER INSTALLATION IS COMPLETED**

## Warning:

- This product is for towing purposes only and must only be loaded as shown in your vehicle Owner's Manual.
- This towbar is NOT to be drilled, cut, welded, or modified in any way.
- All load ratings shown are under the assumption your trailer has a functional braking system.
- When installed in positions other than the one shown in these instructions the Tow Ball/ Tow Ball Mount may interfere or obstruct certain features of your vehicle (tailgate opening, Chassis clearance, Sensor Operation, etc.)

## General:

- Before fitting this towbar check installation hardware is included and correct.
- Check that the towbar is suitable for the vehicle make, model and year then make sure any changes to the vehicle design do not conflict with the fitting of this towbar. (Tray, Canopy, Suspension etc.)
- Check behind chassis rail and body panels before drilling to ensure no hazards are present (fuel lines, electrical wires etc.)
- After drilling, blow any filings clear, remove any swarf in and around the area and treat exposed metal with a suitable rust inhibitor.
- If this vehicle requires a bumper cut out, please check to make sure that your measurements are correct and clear before cutting any panels as some bumper profiles can change. If you are not sure, please ask your towbar supplier.
- To ensure the towbar is safe and secure, it is the owners' responsibility that each fastener is torqued **at 1000km intervals**. If for any reason, a fastener is not suitable for re-torquing, it is the owners' responsibility to replace it to ensure it is of the same grade (8.8) and class as the original. Failure to do so will diminish the towing capacity of the towbar and may result in the deterioration of the chassis of the vehicle. Contact an authorised TAG distributor or the TAG fitment centre if further information is required.

## Towbar Maintenance and Care:

It is recommended, when not in use, the Tow Ball Mount assembly and class 4 Pin and Clip is stored inside the car away from moisture to prevent standing water from forming rust. Inspect to ensure, on regular basis, fasteners are torqued to the specifications below and in good condition.

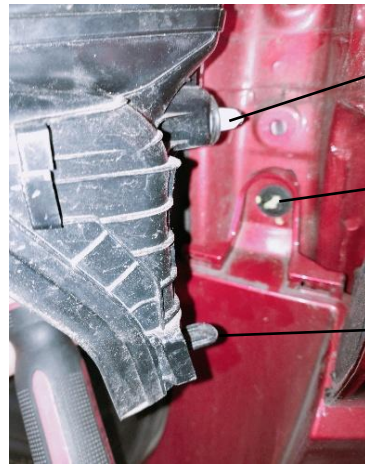
<i>Metric Bolt Torque Settings</i>										
Diameter	Pitch	Grade	Torque	Unit		Diameter	Pitch	Grade	Torque	Unit
M8	1.25	8.8	29	Nm		M12	1.25	10.9	125	Nm
M10	1.25	8.8	57	Nm		M12	1.50	10.9	105	Nm
M10	1.50	8.8	44	Nm		M14	1.25	10.9	195	Nm
M12	1.25	8.8	101	Nm		M14	1.50	10.9	165	Nm
M12	1.50	8.8	97	Nm		M16	1.25	10.9	295	Nm
M12	1.75	8.8	77	Nm		M16	1.50	10.9	250	Nm
M14	2.00	8.8	122	Nm		50mm Tow Ball	N/A	N/A	300	Nm
M16	2.00	8.8	190	Nm		70mm Tow Ball	N/A	N/A	750	Nm

# Installation Instructions



## Step 1: Remove Rear Bumper

- a. Lift the tailgate & remove the covers from the inner side of the taillights by pulling rearward.
- b. Remove 1x hex bolt. ●10



Trim Clip

M6 Bolt

Tongue clip

- c. On the bottom side of the bumper, directly behind the wheel arch, remove 1x hex screw. ●8
- d. Carefully detach the wheel arch trim from the bumper and the first few clips from the body adjacent to the rear door to expose 3 screws. Remove all 3x screws. ⊗/ ●8

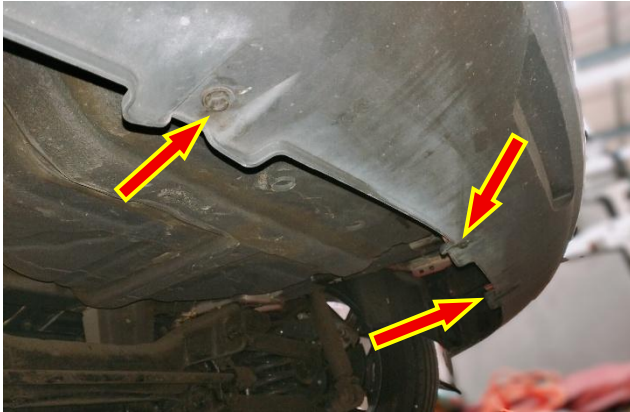


- e. Repeat steps **d-g** on opposite side.

# Installation Instructions



f. Remove 3x hex head bolts from the rear-most bottom edge of the bumper. ●10



g. Retain all fasteners.

h. Beginning at each wheel arch gently unclip bumper from body and remove.

**NOTE: Release the centre of the bumper from the centre clips below the boot to aid in releasing the bumper from below the taillight assemblies.**

i. Disconnect the keyless entry antenna at the top centre of the crash bar.

j. Disconnect the bumper harness on the lower right-hand side of the body.

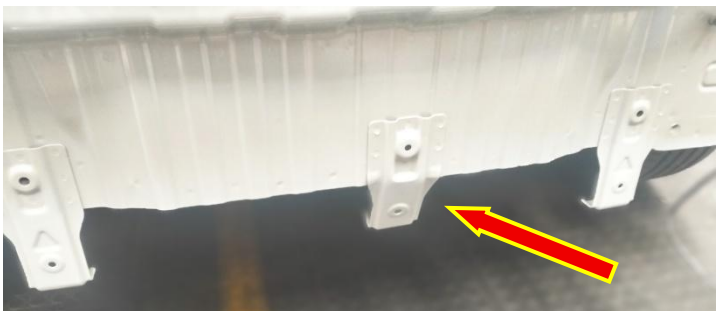
k. Set bumper aside.

l. **Remove & retain** the keyless entry antenna from the top centre of the crash bar.



m. Remove and discard the crash bar via 2x M10 nuts and 2x M10 bolts per side. **Discard the bolts. Retain the nuts.**

n. Use a rubber mallet to bend the centre bumper retaining tab slightly forward or it will foul on the chain plates of the towbar assembly.



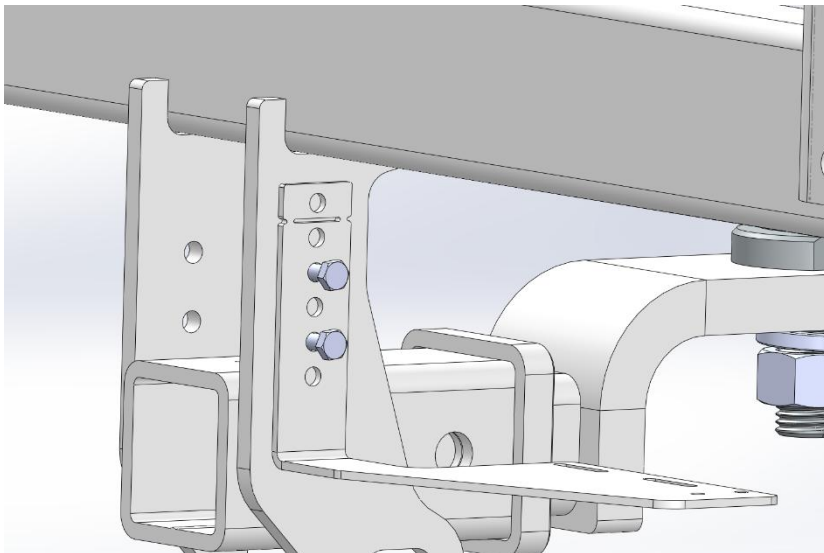
---

## Step 2: Fit Towbar

---

- a. Lift the bar up to the rear body and over the chassis studs at the top.
- b. Loosely fasten with the original M10x 1.25 nuts.
- c. Insert the supplied M10x 1.25x 40 bolts with flat washers into the bottom holes.
- d. Begin by tightening the bottom M10 bolts followed by the M10 nuts at the top.
- e. Tighten all fasteners according to the torque specification on page 3.
- f. Refit the keyless entry antenna to the bracket on the top of the towbar assembly.
- g. To fit the plug mount to the towbar, begin by inserting the M6 cage nuts into the cage nut fastening plate.
- h. Fasten the plug mount to the outside face of the PS chain plate with 2x M6x 20 bolts and the completed fastening plate.

Note: Should the plug mount need to be higher, simply break off the top tab, file the sharp edges and coat with rust inhibitive paint before refitting.



# Installation Instructions



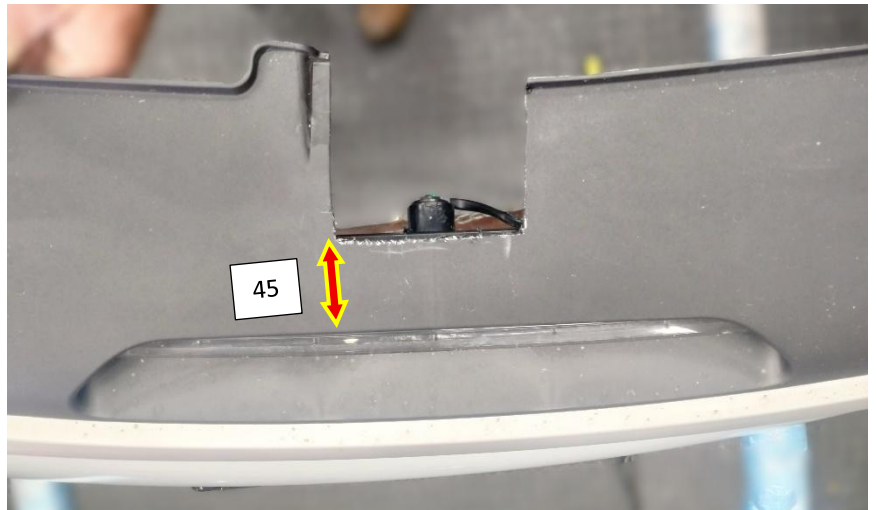
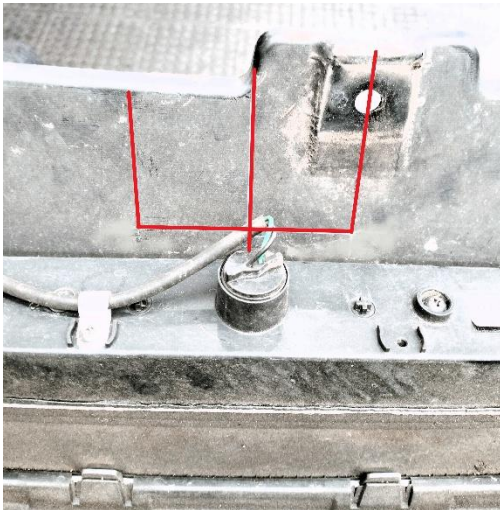
## Step 3: Cut Bumper

**Note:** The towbar installer is ultimately responsible for the location & quality of the bumper cut. To avoid mistakes, please use the following measurements as a guide only. We suggest making small incremental cuts and regularly test fit the bumper to ensure an accurate and tidy appearance. The additional application of rubber pinch-weld around the cut edge ensures a neat & tidy look.

- a. **With the bumper face down and marking the inside**, establish the centre of the bumper using the two outer bumper fastening holes on the bottom face.
- b. Mark the cut-out 90mm wide x 80mm deep from the highest point of the bottom lip of the bumper. See the picture.
- c. Cut the bumper using an air hacksaw or other suitable cutting device.

**Note:** On the outside face, the horizontal cut edge should be approx. 45mm lower than the fog light impression.

- d. De-burr all cut edges.
- e. Refit bumper in reverse of steps 1a-j.



# Installation Instructions

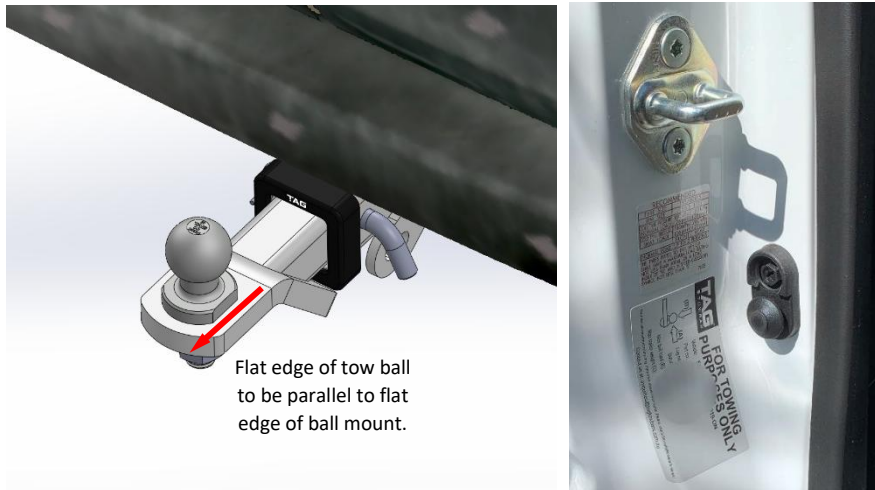


---

## Step 4: Complete Towbar & Apply Spare Compliance Label

---

- a. Attach TAG Hitch cover with rubber mallet carefully to prevent breaking.
- b. Attach the tow ball to the ball mount. The flat side of the tow ball **MUST BE** parallel to the outer edge of the ball mount. **Tighten the tow ball to 300Nm.**
- a. Insert the Tow Ball Mount into the receiver and secure with the Pull pin and R-Clip. When not in use, secure the Ball Mount in a safe place inside your vehicle.
- b. Apply one of the compliance labels to the pillar of the driver's door. Place the remaining label and the fitting instructions in the vehicle handbook.



# TAG Warranty Statement



SWD warrants your TAG Towbar for its full product life under the following conditions:

- You can show proof of purchase.
- The towbar has been correctly installed by a suitably qualified installer.
- The towbar has not been modified or abused in any way and has only been used for the purpose intended.
- The towbar was not fitted second hand to your vehicle.

The extent of this warranty includes materials and workmanship used in the manufacture of the towbar and is to the equivalent value of current, full replacement cost.

Nothing stated or implied in this warranty limits in any way, the statutory rights that you may have.

To make a claim visit the original installer in the first instance or, if you are unable to or are not satisfied with their help, then contact us direct by phone on 1300 669122 or visit [www.swd.com.au](http://www.swd.com.au).