



Towbar Fitting Instructions  
To Suit **RENAULT KOLEOS HZG CL4**  
Part Number **QTRE16L**  
Rating **2000/200 kg**

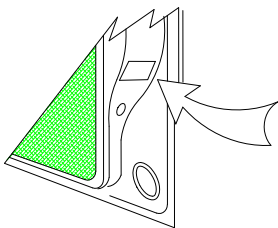
PLACE THESE INSTRUCTIONS IN THE VEHICLE'S GLOVEBOX AFTER INSTALLATION IS COMPLETED

**WARNING:**

1. Do not, drill, cut, weld or otherwise modify the tow bar.
2. If you are using electric welding on a motor vehicle, **always** check that the vehicle is not equipped with electronic engine or instrument management equipment. Failure to do so could **destroy** any onboard computers. If in doubt, check with the vehicle's manufacturer.
3. The high tensile fasteners supplied with this product were used to achieve the specified rating. If replacement is required ensure that fasteners of the same rating & quality are used. Contact an authorised **Trailboss** dealer if further information is required.
4. If TBM is used in inverted position tow ball may make contact with rear tailgate when lowered, which could cause damage.

**General:**

1. Ensure all hardware items have been included refer to assembly diagram.
2. It is recommended that the instructions are read through and completely understood before making any attempt to fit this product.
3. Be wary of any changes to vehicle designs or other accessories that may conflict with the installation of this product.
4. Before drilling ensure that the area is clear of fuel, electrical & other components.
5. All holes drilled into the body panels shall have all burrs & swarf removed then coated with a suitable rust preventative paint.
6. For vehicles that require the bumper to be cut. Ensure cut out area is in correct position on the vehicle prior to cutting the bumper.
7. The high tensile fasteners supplied with this product were used to achieve the specified rating. If replacement is required ensure that fasteners of the same rating & quality are used. Contact an authorized **Trailboss** dealer if further information is required.
8. Ensure that all hardware is fastened to torque list below check fasteners on regular basis.
9. Tow bar load rating sticker provided with this product shall be conspicuously located on inside rear end of the driver's door. **(See diagram below).**
10. Trailboss recommends that you check your tow ball to ensure that it complies with the Australian standards **AS 4177.2**.
11. **PLEASE NOTE:** It is advised to remove your LUG or TBM when not actually towing so as to produce a clear view of the vehicles registration plate if obscured, and to also provide maximum available departure angle



Place load rating sticker  
inside driver's door here

**FOR TRAILER TOWING PURPOSES ONLY**  
For towing capacity details please refer to vehicle owner's manual or to the manufacturer. Overloading can void your warranties.

**RECOMMENDED ASSEMBLY TORQUE LISTING**

<u>Diameter</u>	<u>Grade 8.8 Bolt</u>
M6	9.5 Nm
M8	21.7 Nm
M10	43.4 Nm
M12	77.3Nm
M14	146 Nm
M16	189.8 Nm

**Tow bar Maintenance and Care.**

Trailboss recommends that bolt torque's, as listed below, are routinely and regularly inspected and checked for correct tension. Replace any worn or defective parts.

We recommended to remove Tow Ball Mounts (TBM's, tongues or lugs) when not being used for any considerable length of time.

So as to avoid injury, when not towing it is suggested that the tongue, Pull Pin and R-clip are removed then stored in a safe, clean and dry place, away from excessive moisture.

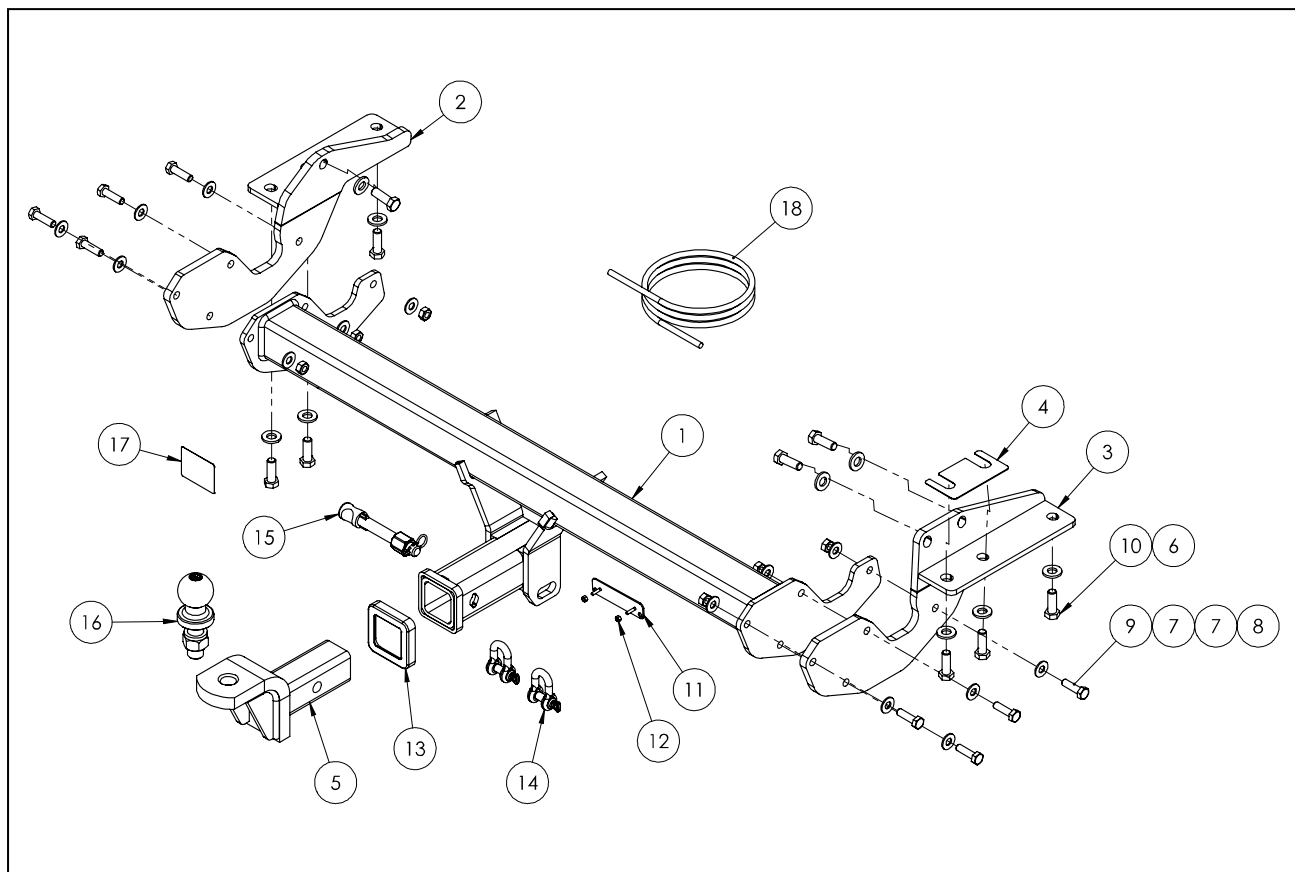
Hitch Pull Pins and spring "R" clips are regularly checked for proper installation. Replace any worn or defective parts.

**Cequent Customer Service**  
Ph: 1800 812 017 Fax: 03 9898 3299  
Email: [info@cequent.com.au](mailto:info@cequent.com.au)  
Post: PO Box 4050, Dandenong South VIC 3175



Towbar Fitting Instructions  
To Suit **RENAULT KOLEOS HZG CL4**  
Part Number **QTRE16L**  
Rating **2000/200 kg**

PLACE THESE INSTRUCTIONS IN THE VEHICLE'S GLOVEBOX AFTER INSTALLATION IS COMPLETED



ITEM	DESCRIPTION	QTY
1	RENAULT KOLEOS HZG CL4	1
2	SIDE ARM ASSY LH	1
3	SIDE ARM ASSY RH	1
4	SPACER RH	1
5	BMW X5/X6 CLASS TBM	1
6	WASHER PLAIN 1/2X1-1/8X16G	9
7	WASHER FLAT M10 X 23 X 2 Z/P	16
8	NUT HEX HD M10 X 1.25P G8	8
9	SET SCREW HEX HD M10x35x1.25P	8
10	SET SCREW M12-1.25x35 GR 8.8	9
11	VE PLUG BRACKET	1
12	NUT NYLON LOCK HEX HD M4X0.7P	2

ITEM	DESCRIPTION	QTY
13	HITCH BOX COLLAR COVER	1
14	10mm "D" SHACKLE	2
15	ANTI-RATTLE PULL PIN ASSY	1
16	50mm TOWBALL	1
17	ACRYLIC COMPLIANCE LABEL	1
18	WIRING LOOM	1

**Cequent Customer Service**  
Ph: 1800 812 017 Fax: 03 9898 3299  
Email: [info@cequent.com.au](mailto:info@cequent.com.au)  
Post: PO Box 4050, Dandenong South VIC 3175



Towbar Fitting Instructions  
To Suit **RENAULT KOLEOS HZG CL4**  
Part Number **QTRE16L**  
Rating **2000/200 kg**

PLACE THESE INSTRUCTIONS IN THE VEHICLE'S GLOVEBOX AFTER INSTALLATION IS COMPLETED

1. In wheel arch, remove 2 x Torx screws.

Repeat for opposite side.



2. Under the width of the bumper, remove 8 x scrivets and 2 x bolts



3. Peel away wheel arch skirt to reveal bolt.  
Remove 1x bolt.

Repeat for opposite side.



**Cequent Customer Service**  
Ph: 1800 812 017 Fax: 03 9898 3299  
Email: [info@cequent.com.au](mailto:info@cequent.com.au)  
Post: PO Box 4050, Dandenong South VIC 3175



Towbar Fitting Instructions  
To Suit **RENAULT KOLEOS HZG CL4**  
Part Number **QTRE16L**  
Rating **2000/200 kg**

PLACE THESE INSTRUCTIONS IN THE VEHICLE'S GLOVEBOX AFTER INSTALLATION IS COMPLETED

4. In the luggage compartment, remove cover to gain access to the tail light.

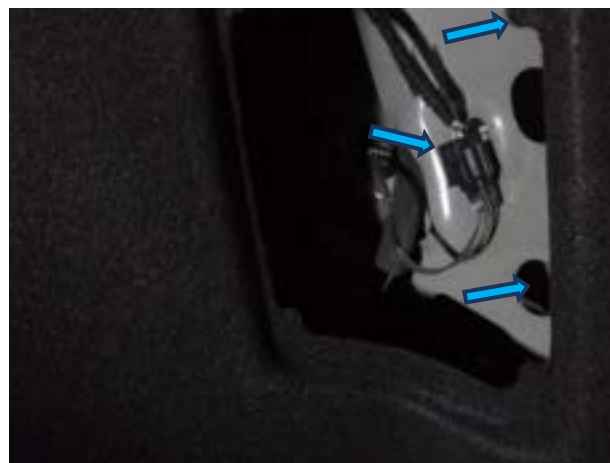
Repeat for other side.



5. Remove 2 x nuts securing the tail light.

6. Disconnect the tail light wiring harness.

Repeat for other side



7. Remove tail light by pulling rearwards (This could be extremely tight).

Repeat for other side.



**Cequent Customer Service**  
Ph: 1800 812 017 Fax: 03 9898 3299  
Email: [info@cequent.com.au](mailto:info@cequent.com.au)  
Post: PO Box 4050, Dandenong South VIC 3175



Towbar Fitting Instructions  
To Suit **RENAULT KOLEOS HZG CL4**  
Part Number **QTRE16L**  
Rating **2000/200 kg**

PLACE THESE INSTRUCTIONS IN THE VEHICLE'S GLOVEBOX AFTER INSTALLATION IS COMPLETED

8. In tail light cavity, remove 1 x bolt and 2 x scrivenets.

Repeat for other side



9. Remove bumper from vehicle. Ensure to disconnect wiring harness located on the LH side.



10. Remove and discard the impact beam, secured with 3 x bolts per side.



**Cequent Customer Service**  
Ph: 1800 812 017 Fax: 03 9898 3299  
Email: [info@cequent.com.au](mailto:info@cequent.com.au)  
Post: PO Box 4050, Dandenong South VIC 3175



Towbar Fitting Instructions  
To Suit **RENAULT KOLEOS HZG CL4**  
Part Number **QTRE16L**  
Rating **2000/200 kg**

PLACE THESE INSTRUCTIONS IN THE VEHICLE'S GLOVEBOX AFTER INSTALLATION IS COMPLETED

11. On RH side remove the underbody protector secured with 1 x scrivet.

Repeat for LH side.



12. Remove and discard the recovery hook, located on RH side, secured with 6 x bolts.



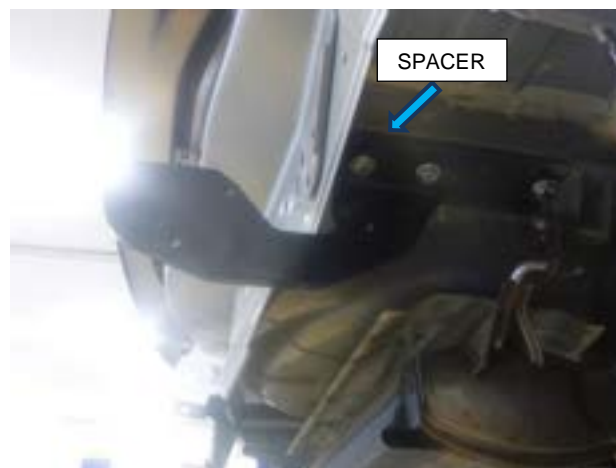
**Cequent Customer Service**  
Ph: 1800 812 017 Fax: 03 9898 3299  
Email: [info@cequent.com.au](mailto:info@cequent.com.au)  
Post: PO Box 4050, Dandenong South VIC 3175



Towbar Fitting Instructions  
To Suit **RENAULT KOLEOS HZG CL4**  
Part Number **QTRE16L**  
Rating **2000/200 kg**

PLACE THESE INSTRUCTIONS IN THE VEHICLE'S GLOVEBOX AFTER INSTALLATION IS COMPLETED

13. Fit RH Side arm along with the spacer to chassis rail and loosely secure with 5 x bolts (3 x under chassis and 2 x side of chassis) complete with 1 x washer per bolt.



14. Fit LH side arm to the chassis and loosely secure with 4 x M12 bolts (3 x under chassis and 1 x side of chassis) complete with 1 x washer per bolt.



15. Fit the crosstube to the side arms and secure with 8 x M10 bolts (4 per side) complete with 2 x washers and 1 x nut per bolt.

**Torque all fasteners as specified.**

**M10 : 48Nm**

**M12 : 89Nm**



**Cequent Customer Service**  
Ph: 1800 812 017 Fax: 03 9898 3299  
Email: [info@cequent.com.au](mailto:info@cequent.com.au)  
Post: PO Box 4050, Dandenong South VIC 3175

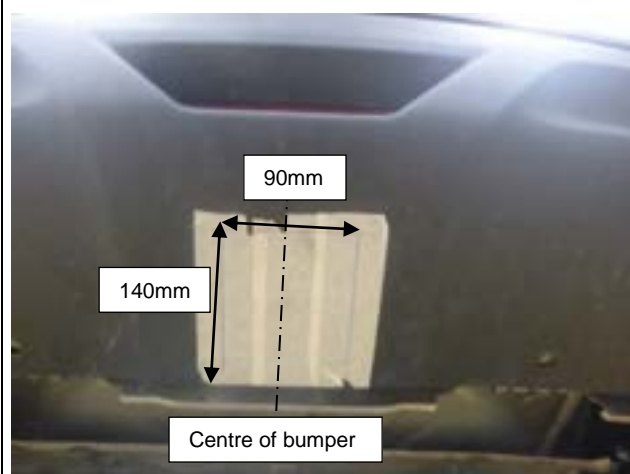


Towbar Fitting Instructions  
To Suit **RENAULT KOLEOS HZG CL4**  
Part Number **QTRE16L**  
Rating **2000/200 kg**

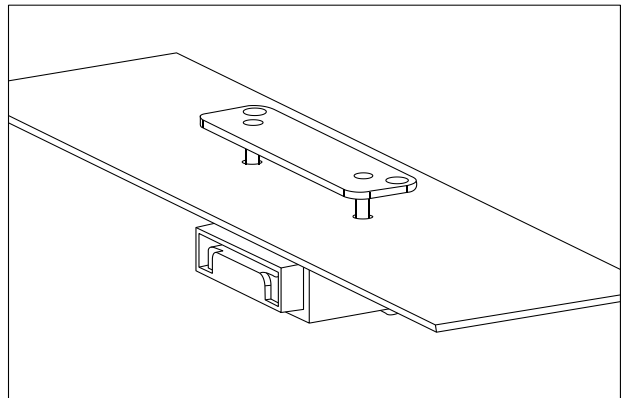
PLACE THESE INSTRUCTIONS IN THE VEHICLE'S GLOVEBOX AFTER INSTALLATION IS COMPLETED

16. For the bumper cut.

Locate the centre of the bumper and mark off 90mm wide by 140mm long measured from the bottom edge of the bumper.



17. Determine an appropriate position for the plug bracket. Mark out and drill 2x  $\varnothing 5\text{mm}$  holes 69mm apart on bumper skin to support plug bracket.



18. Reattach bumper and removed components by following steps 1-11 in reverse.

**Cequent Customer Service**  
Ph: 1800 812 017 Fax: 03 9898 3299  
Email: [info@cequent.com.au](mailto:info@cequent.com.au)  
Post: PO Box 4050, Dandenong South VIC 3175



Wiring Loom Fitting Instructions  
To Suit Renault Koleos  
Part Number 101875-WL

## Wiring Loom Installation Instructions

Renault Koleos  
Part No: 101875-WL  
ECU: 04836 (Non Branded if available)  
Tail Harness Length Required: 1200mm  
RPA Disable Information: Via Dash  
Electric Brake Wire Location: Blue Wire Near Blue Tail  
Connector

Wiring Loom Installation Time: Approx 45 Mins



Wiring Loom Fitting Instructions  
To Suit Renault Koleos  
Part Number 101875-WL

1. Disconnect negative battery terminal.
2. Remove boot liner.
3. Remove rear sunshade.
4. Remove foam tray.
5. Remove spare tyre.
6. Remove scrivenets.
7. Remove Boot lock cover.
8. Remove boot liner.
9. Remove 10mm bolt.  
**Repeat for RHS.**
10. Dislodge upper LHS trim.  
**Repeat for RHS.**
11. Remove 3 scrivenets.  
**Repeat for RHS.**
12. Remove 3 bolts.  
**Repeat for RHS.**
13. Dislodge lower trim.  
**Repeat for RHS.**
14. Connect the long T-patch from harness (101875-WL) between taillight RHS and vehicle harness.
15. Route harness across the inside of the rear bumper toward the LHS.
16. Connect T-patch between taillight LHS and vehicle harness.
17. Connect 12V line to mating white 4-way connector.
18. Connect ground ring terminal to existing vehicle ground.
19. For reverse connection, route the trailer patch BLACK/WHITE wire branch up toward the rear head lining and locate the vehicle connector. Use a multi-meter to determine the wire for reverse.
20. Connect the BLACK/WHITE wire ezy-tap to the corresponding vehicle wire, then connect the trailer patch terminal to the ezy-tap.
21. Connect ECU Connector.
22. Mount ECU (04836) behind the panel in location shown.  
**Ensure ECU connector is facing down.**
23. Remove and discard vehicle grommet.
24. Fasten Trailer socket to towbar using M4 fasteners (not supplied).



Wiring Loom Fitting Instructions  
To Suit Renault Koleos  
Part Number 101875-WL

25. Route Tail (1200) across to the LHS and up through the previously removed grommet.  
**Ensure Tail is routed such that it is at least 100mm away from exhaust.**
26. Rear park assist system can be disabled via infotainment system.
27. Connect the tail harness 8-way connector to the trailer patch 8-way mating connector.
28. Re-connect negative battery terminal.
29. Test the trailer patch function using a light board or multi-meter.
30. Secure all harnesses using cable ties (not supplied).
31. Re-fit all removed parts and secure all fasteners, ensuring there are no squeaks or rattles.
32. Place the fitting instructions in the glove box after fitment.



# FITTING INSTRUCTIONS

## Silent Anti-Rattle Hitch Pin (PRO001)

• These fitting instructions are supplied to ensure understanding of how the HITCH PIN should be fitted and used correctly.

• Once installed, we recommend **ALL** instructions are kept and placed in the vehicle glove box.

**NOTE: Routine maintenance and inspection of the towbar & HITCH PIN is required. Regularly inspect for wear and check the tightness of the Hitch Pin. Follow instructions below to retighten the nut when necessary.**

**\*Do not tow with your vehicle if the R CLIP or the HITCH PIN is loose or missing. Replacement parts are available from your Pro Series Distributor.**

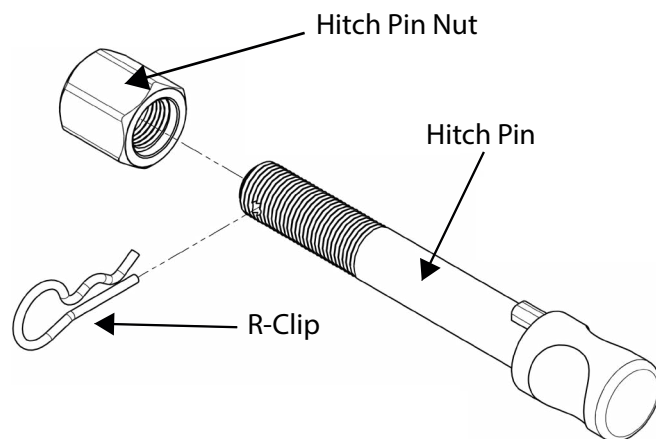


Fig 1. Silent Anti-Rattle Hitch Pin assembly

### STEP 1

Insert Trailer Ball Mount (TBM) into towbar HITCHBOX, aligning hole in TBM SHANK with hole in HITCHBOX (Fig 2).

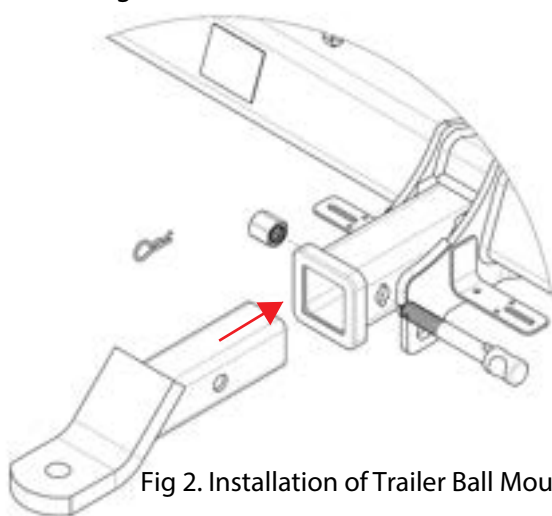


Fig 2. Installation of Trailer Ball Mount

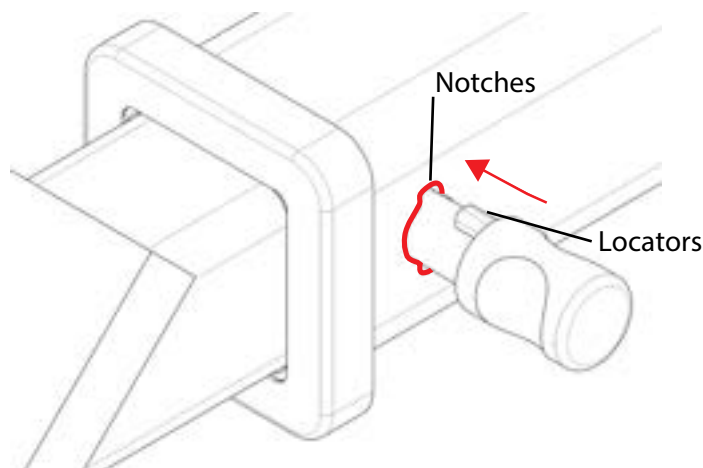


Fig 3. Silent Anti-Rattle Hitch Pin orientation

### STEP 2

Insert HITCH PIN through hole in HITCHBOX and hole in TBM SHANK; ensure the LOCATORS are inserted into the NOTCHES in the HITCHBOX (Fig. 3).

### STEP 3

Screw HITCH PIN NUT onto HITCH PIN ; tighten HITCH PIN NUT until finger tight, ensuring TBM is restrained from movement.

### STEP 4

Tighten HITCH PIN NUT by turning nut a further 1/8th of a turn in the clockwise direction using a 24mm spanner (Fig. 4).

### STEP 5

Install HITCH PIN R CLIP through the hole on the HITCH PIN (Fig. 1).

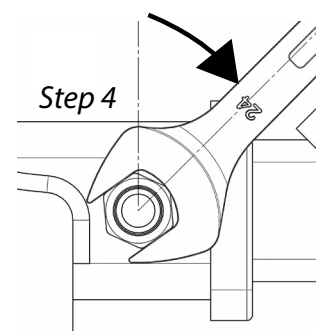


Fig 4. Tightening of Silent Anti-Rattle Hitch Pin Nut