

**PRODUCT DETAILS:**

---

<b>Part Number:</b>	QTMA669L	<b>Maximum Towing Braked:</b>	2500	kg
<b>ECU Number:</b>	04843	<b>Maximum Towing Unbraked:</b>	750	kg
<b>Tail Harness Length Required:</b>	1800 mm	<b>Maximum Static Ball Load:</b>	150	kg
<b>TBM/Lug Part Number:</b>	21415			

---

**FITTING DETAILS:**

---

<b>Towbar Installation Time:</b>	60 Mins.	<b>RPA Disable/Other:</b>	YES
<b>Total Installation Time:</b>	100 Mins.		
<b>Bumper Cut Required:</b>	Yes		

---

**Note:**

- RPA disable automatically detected using any 1800mm tail.

### TRAILBOSS RECOMMENDS THAT INSTRUCTIONS ARE READ AND UNDERSTOOD COMPLETELY PRIOR TO FITMENT.

#### BEFORE YOU START:

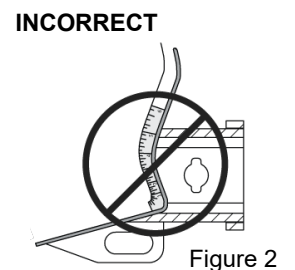
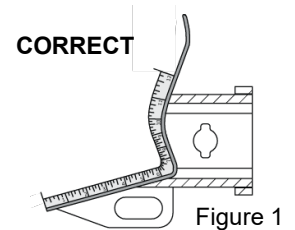
Check all hardware items have been included refer to assembly diagram.  
Please ensure this towbar is only fitted to vehicle models as per Trailboss application guide.

#### Bumper Cuts

Vehicle and bumper variations can and do occur during vehicle manufacture after initial towbar design. Fitment of towbar to vehicle and accuracy of bumper cut must be assessed prior to any bumper modifications made. Incorrect bumper cuts are not covered under Trailboss warranty.

**NOTE: Bumper cuts need to be approached with care, refer to notes below.**

- Bumper centreline – where the centreline of the bumper needs to be determined, the installer must assess centre point by measurement of bumper width or determining two symmetrical reference points to give centreline.
- Bumper edge – To assist with accurate bumper cut measurement, reference to the start of the bumper edge is now being commonly used.
  - Measure from bottom edge along bumper and around corner to the 70 mm point (Figure 1).
  - Do not measure from visible bumper front of corner, upwards (Figure 2).



#### Drilling

- For any required drilling during installation, ensure that the area is clear of fuel, electrical & other components that may be damaged.
- All holes drilled into metal body panels shall have all burrs & swarf removed then coated with a suitable rust preventative paint.

#### Bolts/Fasteners

- Ensure that all hardware is fastened to correct torque as specified in this fitting instruction.
- All fasteners supplied with this product are used to achieve a specified clamp loading. If replacement is required ensure that fasteners of the same grade and class are used.

**NOTE: Achieving correct torque is critical to proper installation and responsibility of the installer. Towbar failures attributed to tension issues from over tightening or under tightening are not covered by Trailboss warranty.**

#### Product Labels

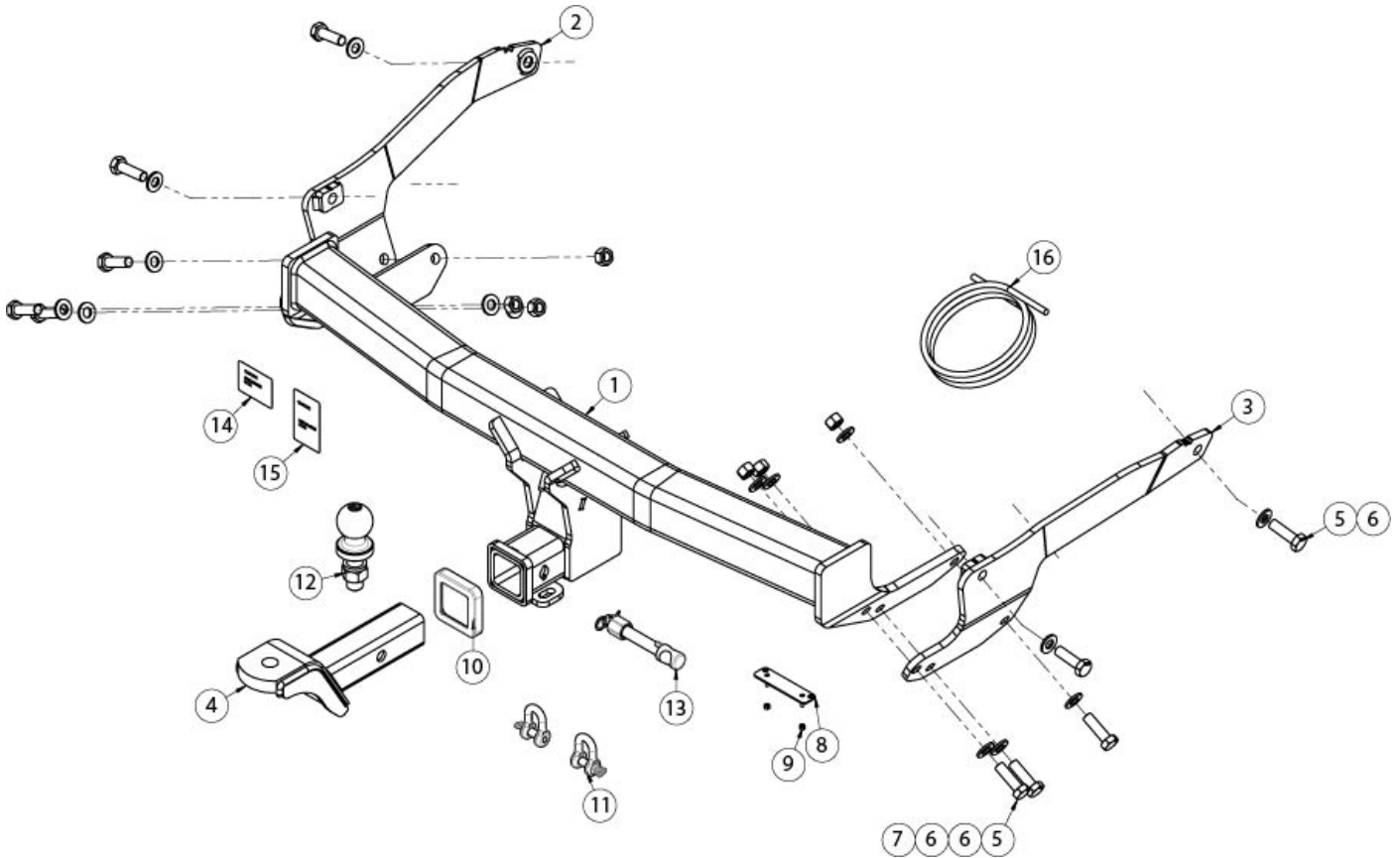
- a. Towbar load rating sticker provided with this product shall be conspicuously located on inside rear end of the driver's door.

### WARNING:

**Do not, drill, cut, weld or otherwise modify the towbar.**

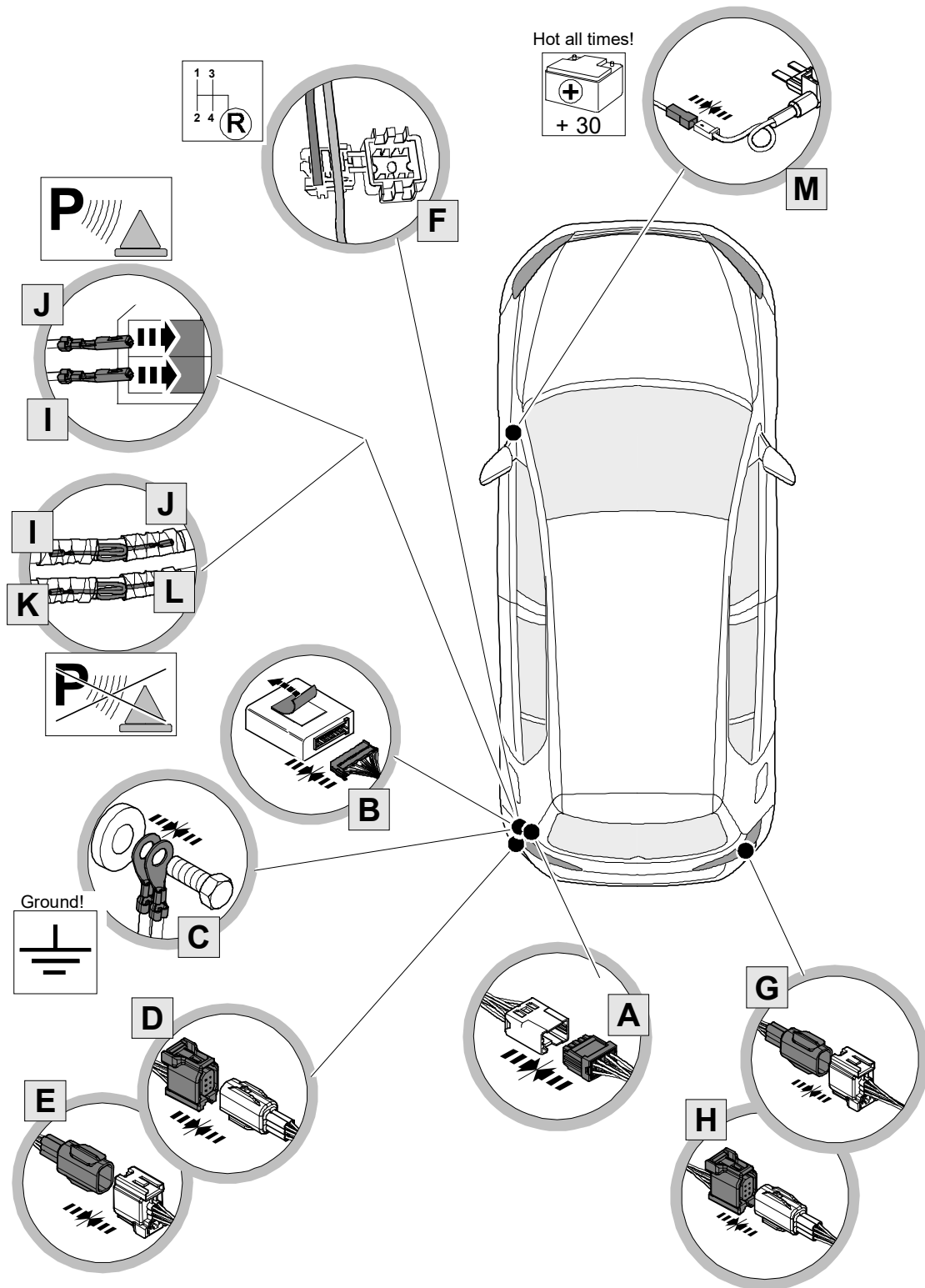
**FOR TOWING PURPOSES ONLY - This towbar is designed and tested by Trailboss to adhere to ADR 62/02 which provides only for the expected load demands of towing.**

### **i** TOWBAR ASSEMBLY DIAGRAM



ITEM	DESCRIPTION	QTY
1	MAZDA CX60 CL4 WELDED ASSY	1
2	MAZDA CX60 LH SIDE ARM	1
3	MAZDA CX60 RH SIDE ARM	1
4	TRAILER BALL MOUNT	1
5	WASHER PLAIN M14x28x3	16
6	SCREW HEX HD M14x45x1.5P	10
7	NUT HEX HD M14x1.5P	6
8	PLUG BRACKET	1

ITEM	DESCRIPTION	QTY
9	NUT NYLOC HEX HD M4x0.7P	2
10	HITCH BOX COLLAR COVER	1
11	"D" SHACKLE 10mm	2
12	TOWBALL 50mm	1
13	SMART PIN SILVER	1
14	COMPLIANCE LABEL	1
15	LOAD RATING LABEL	1
16	WIRE LOOM	1



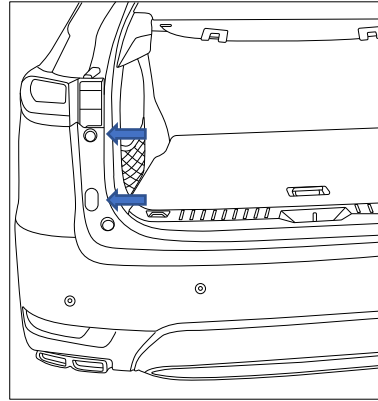
### **i** WIRING ASSEMBLY DIAGRAM

49-75 Pacific Drive Keysborough, VIC 3173  
 Phone: 1800 812 017  
 Email: [enquiries@cequent.com.au](mailto:enquiries@cequent.com.au)



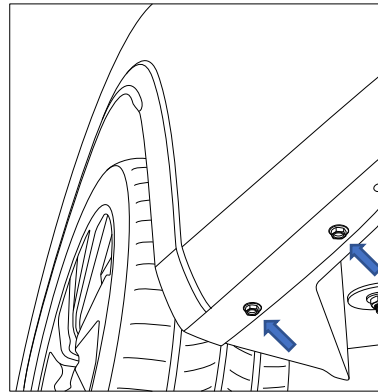
1. Release the rear lift gate to expose the boot cabin. Remove the 2x plastic bumper caps from bumper (both sides).
2. Remove the 2x screws located behind the bumper caps.

Repeat for the other side.

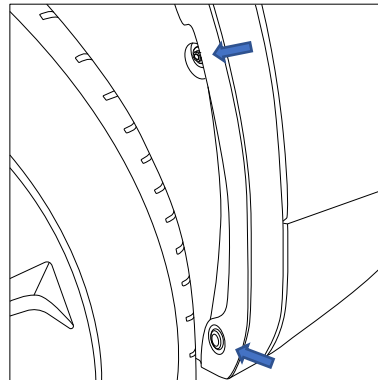


3. Remove the 2x screws on the underside of the bumper.

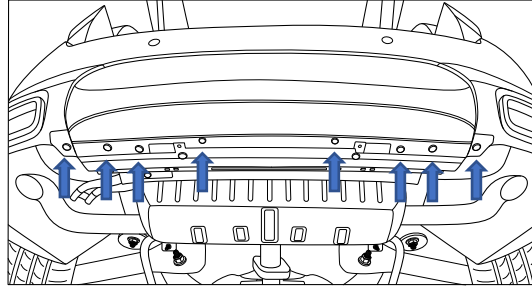
Repeat for the other side.



4. Remove the 1 x Scrivet and 1 x Screw from the wheel arch.



- 
5. Remove the 8 x Scrivets from the underside of the Rear Bumper.

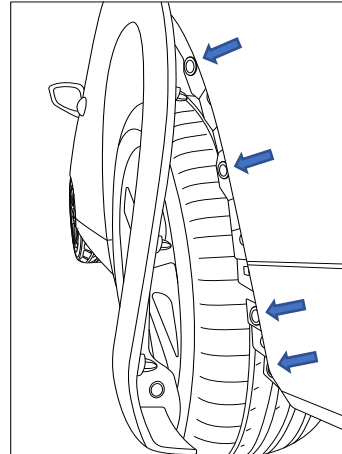


- 
6. Carefully untrim, peel back the side guard moulding to expose and remove the 4 x Scrivets.

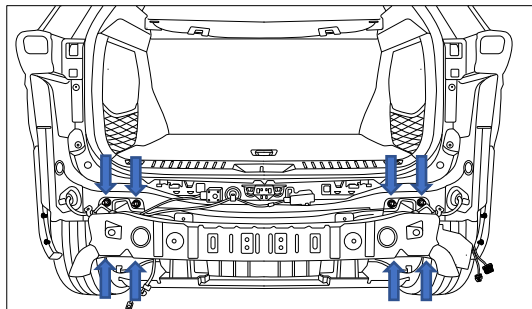
Repeat for other side.

7. Carefully remove the rear bumper.  
Disconnect any sensor wiring harnesses.

Store safely to avoid damage to the rear bumper.

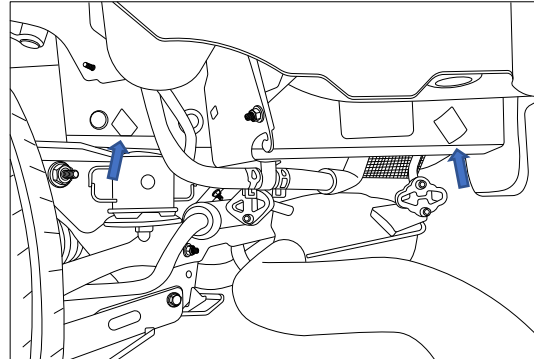


- 
8. Remove and discard the impact beam by removing the 8 x M12 hex nuts.



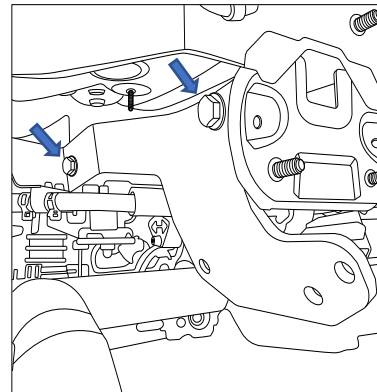
9. On the chassis rail peel off the tape to reveal the 2 x mounting positions.

Repeat for other side.



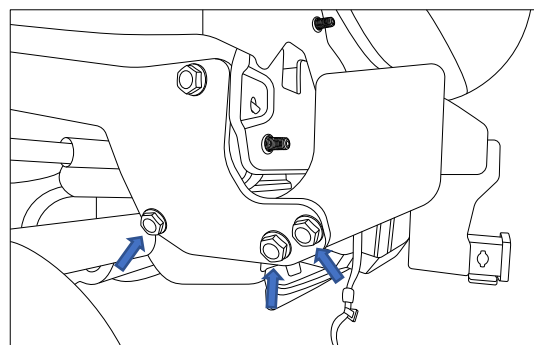
10. Place the side arm on the chassis frame and loosely secure with 2x M14 x 1.5 bolts complete with 1x washer per bolt.

Repeat for other side.



11. Position the cross tube between the side arms and loosely secure each side with 3x M14 x 1.5 bolts, 2x washers and 1x nut per bolt.

**Torque all M14 bolts = 196Nm**

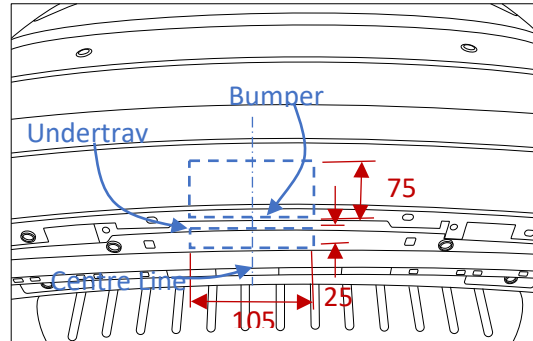


12. For the bumper cut.

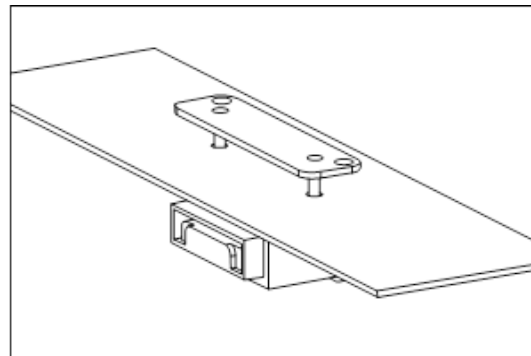
Find the centre of bumper, measure, from the Bumper edge - mark out 105mm wide by 75mm long and cut bumper as shown ensuring there are no loose wires close to cut out.

Measure from the edge of the undertray edge bumper attachment panel edge - mark out 105mm wide by 25mm long and cut bumper as shown.

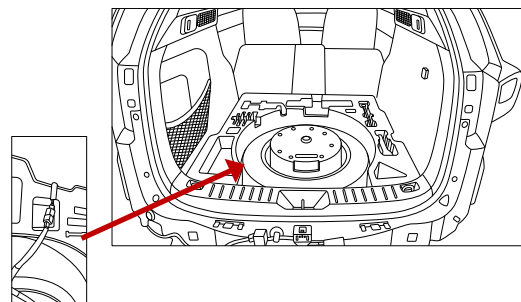
Remove all swarf and rough edges.



13. Determine an appropriate position for the plug bracket. Mark out and drill 2x  $\varnothing 5$ mm holes 69mm apart on bumper skin to support plug bracket.

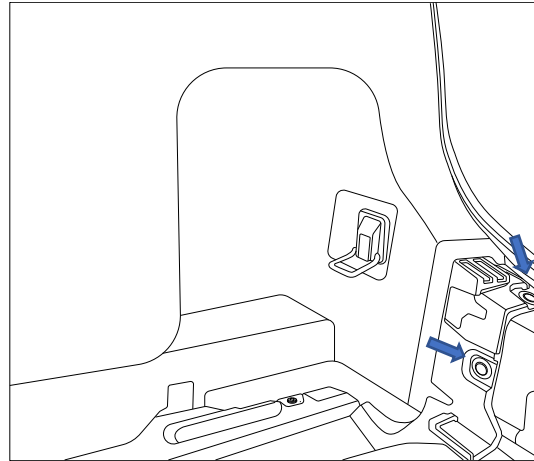


- 14. Remove sunshade (if applicable) rear cargo floor.
- 15. Disconnect the subwoofer connector.
- 16. Remove the foam inserts surrounding the spare wheel and rear boot sill trim.



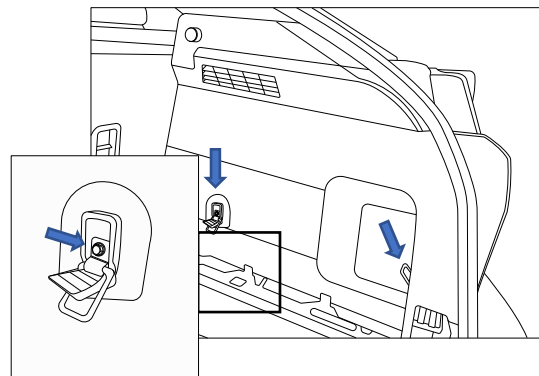
- 
17. Remove 2 x Scrivets retaining the side trim panel to the rear of the vehicle.

Repeat for other side.



- 
18. Remove 2 x side trim panel tie downs by flipping the screw cover down and remove 1x screw per tie down.

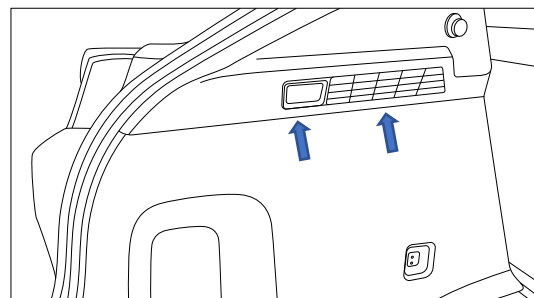
Repeat for other side.



- 
19. Lay rear seats forward.  
20. Release the LHS handle to expose Phillips head screw.  
21. Remove the Upper Side Trim Panel.  
22. Place the trims safely in the centre of vehicle.

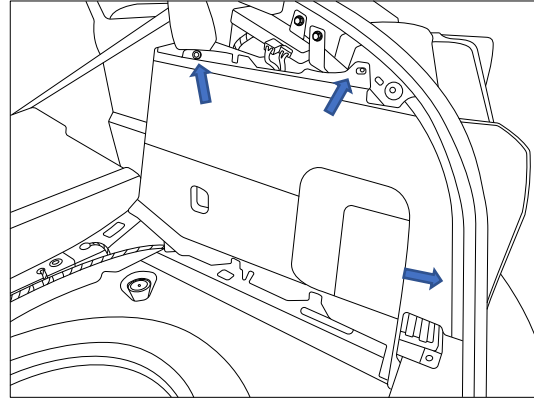
Disconnect the rear boot light when removing the RHS trim.

Repeat for other side.



23. Remove Scrivet retaining side trim panel.

Repeat for other side.

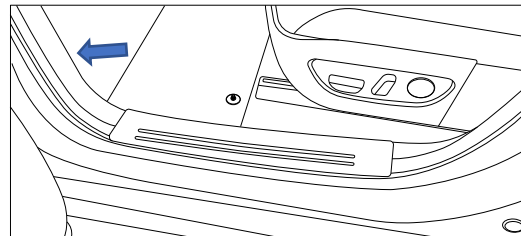
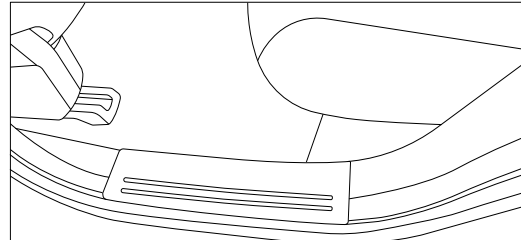


### Front & Rear

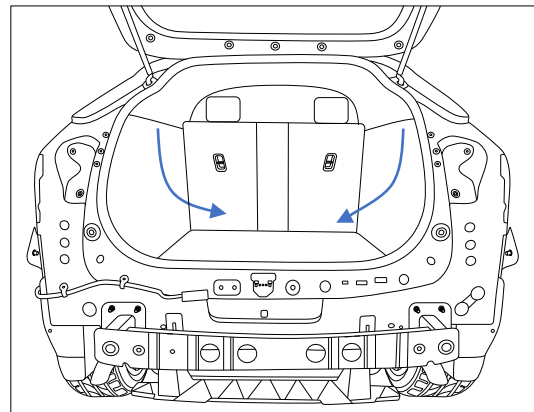
24. Remove LHS rear sill trim.

25. Remove LHS front sill trim.

26. Remove the fuse cover panel.

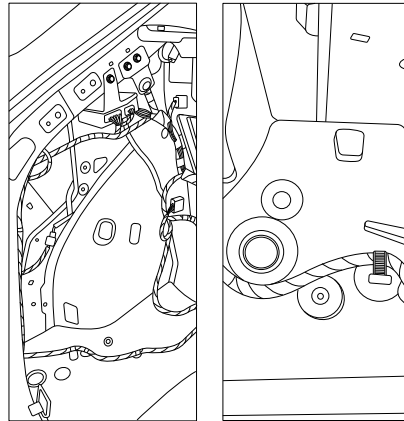


27. In the rear gently fold the side trim panels into the center of vehicle as shown.

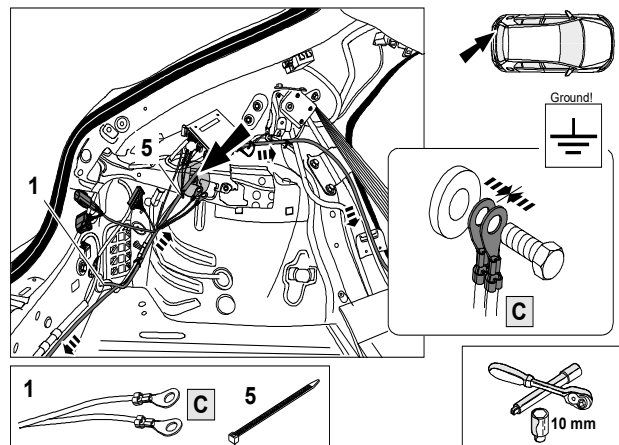


28. Locate and remove vehicle small blanking grommet.
29. Using a step drill, drill out the hole to  $\varnothing 30\text{mm}$ .
30. Feed the 1800mm tail connector through the previously drilled hole, slide the grommet to desired position allowing enough length to mount the trailer plug.
31. Secure the grommet in place using a cable tie.

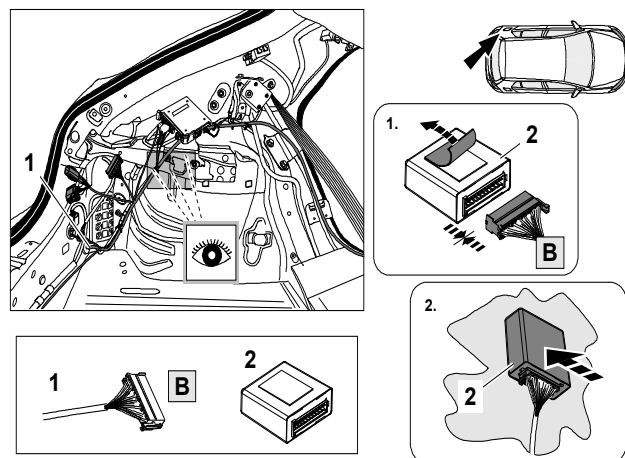
**Remove any swarf and sharp edges  
spray rust inhibitor.**



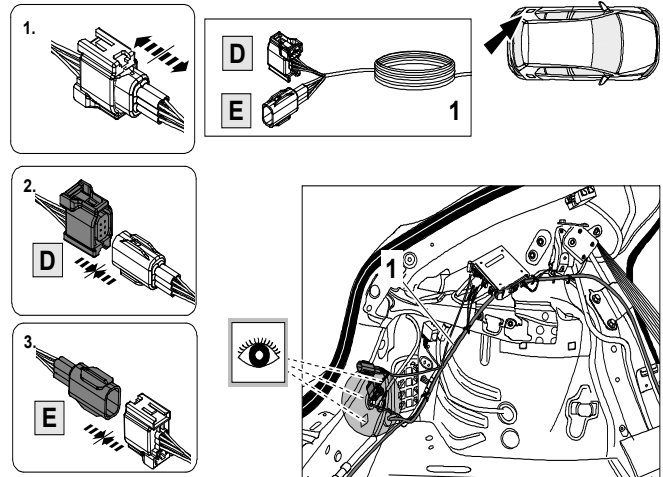
32. Connect the trailer patch ring terminals (C) to factory ground point.



33. Connect the trailer patch 18-way connector (B) to ECU 04843 (2).
34. Remove the adhesive tape protector off the ECU and place the ECU on a flat surface.
35. Press for at least 20-30 seconds to ensure proper adhesion.

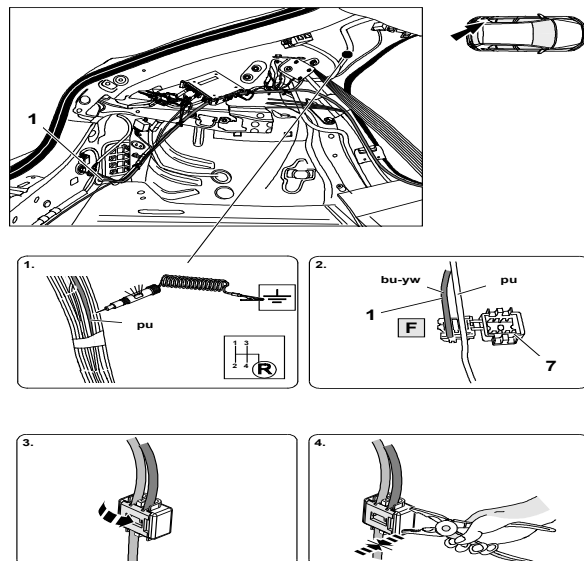


36. Patch in the LHS trailer patch connectors (E) and (D).



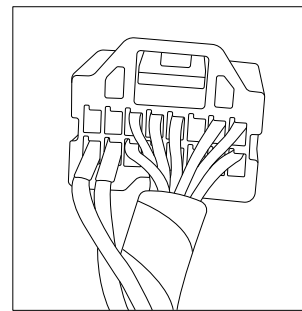
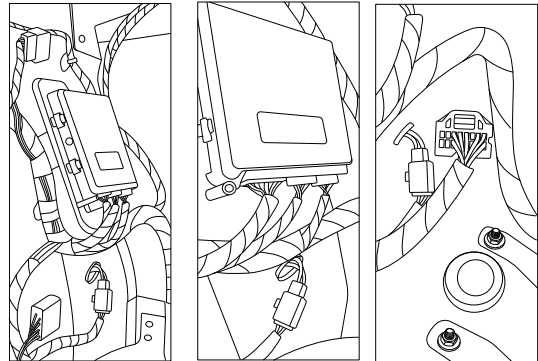
**⚠ Note: This step is only for connecting Reverse only if this is not required tape the Black/Yellow (F) trailer patch wire back to harness.**

37. Remove the tape on the rear loom to expose a purple wire.
38. Use splice for connection of 2 wires.
39. Insert vehicle Purple wire into splice tap
40. Insert trailer patch Black/Yellow (F) wire into splice tap.
41. Close splice and use pliers to fully lock splice.

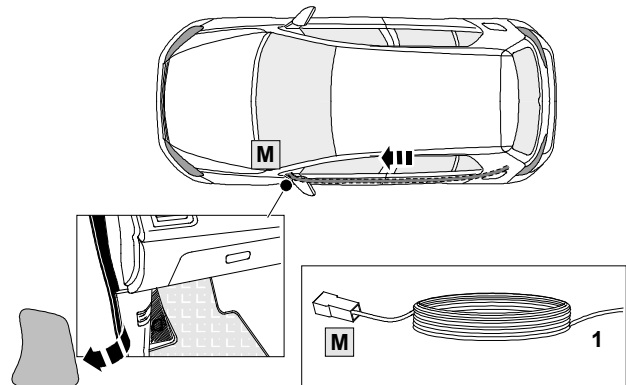


### RPA Steps.

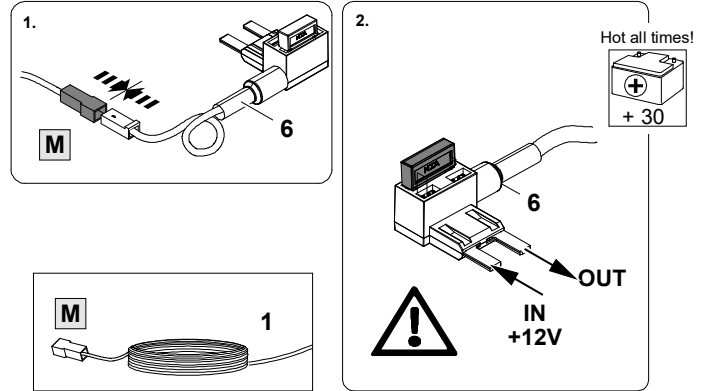
42. Locate vehicle rear BCM located on the LHS wheel arch.
43. Remove the 16-way connector.
44. Using jeweller's screwdriver open the secondary lock.  
Insert trailer patch PDC wires Black/Green (I) into cavity 16 and White (J) into the cavity 15.



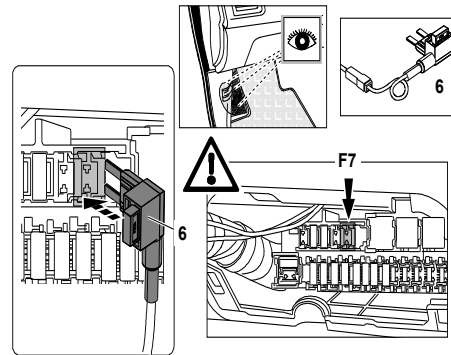
45. Route trailer patch 1-way power connector (M) towards the Front passer footwell fuse box.



46. Connect add-a fuse adaptor (6) to main harness connector (M).



47. Connect Fuse adaptor (6) to position F7 ensure the orientation has wire facing downwards.



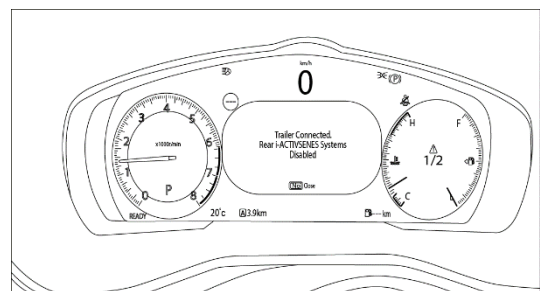
48. Secure all harnesses using cables ties.

49. Re-fit all removed parts in in the following steps 1-8, and 14-21 in reverse ensure no rattle and squeaks.

50. Test the trailer wiring harness function using a trailer test board.

**RPA and SCBS-R (Smart City Brake Support Reverse) will disable when trailer is plugged in. Below is the test method and what will appear on the dash.**

51. Place fitting instructions in glovebox after fitment.





## CUSTOMER INFORMATION

PLACE THESE INSTRUCTIONS IN THE  
VEHICLE'S GLOVEBOX AFTER INSTALLATION

**THANK YOU FOR PURCHASING TRAILBOSS. WITH CORRECT MAINTENANCE AND CARE  
THIS PRODUCT WILL PROVIDE A LIFETIME OF TROUBLE-FREE OPERATION.**

### **TOWBAR MAINTENANCE AND CARE:**

1. Trailboss recommend that the towbar LUG or TBM (Trailer Ball Mount) Pull Pin and R-clip are removed and stored when not in use. Removal of LUG or TBM (Trailer Ball Mount) is advisable when not in use to assist with any of the following.
  - Ensure rear number plate is not obscured.
  - Allow maximum available departure angle and prevent any potential interference.
  - Prevent possible interference with vehicles reverse sensors or camera detecting a tow ball mount as an obstruction during reversing.
  - Removes towball mount as an obstruction for when moving around the rear of the vehicle.
2. Trailboss recommends routine inspection of your towbar to ensure trouble free towing.
  - Bolt security and tension should be regularly inspected and checked for correct tension. Replace any worn or defective parts with suitable grade & class fasteners. Inspection should be requested to coincide with vehicle major services.
3. It is the owner's responsibility to ensure towing and down ball weight capacities of the towing vehicle are not exceeded.
  - Towing and down ball weights allowable may differ according to model variations. Please refer to owner's manual or vehicle dealer to confirm exact rating for your vehicle model variant.
  - It is not uncommon for the vehicle tow rating to differ from the towbar rating. When this occurs, the lesser rating must be adhered to.
  - For vehicles fitted with enhanced vehicle functions that may be altered/changed when towing i.e Trailer sway mitigation, blind spot detection, adaptive cruise control etc. Please consult owner's manual to understand changes enabled when towing and after towing.

### **WARRANTY INFORMATION:**

Trailboss Towbars are covered by a Lifetime Warranty.

Our goods come with guarantees that cannot be excluded under the Australian Consumer Law. You are entitled to a replacement or refund for a major failure and for compensation for any other reasonably foreseeable loss or damage. You are also entitled to have the goods repaired or replaced if the goods fail to be of acceptable quality and the failure does not amount to a major failure.

For further details please contact customer service on 1800 812 017.

## PRO SERIES SILENT ANTI-RATTLE HITCH PIN

Your Trailboss towbar is equipped with a Pro Series Silent Anti-Rattle Hitch Pin technology to help reduce towbar tongue rattle in most driving conditions. Please ensure below instructions are understood and routine maintenance is carried out to ensure best towing experience.

Regularly inspect for wear and check the tightness of the Silent Anti-Rattle Hitch Pin. Follow instructions below to re-tighten the nut as necessary when movement and noise in the tow ball mount is noted.

- Before towing, ensure R-Clip is properly installed and hitch pin nut is installed and tensioned. Replacement parts are available from your Pro Series Distributor.

## TOWBALL MOUNT REMOVAL/INSTALLATION

### STEP 1

Insert Trailer Ball Mount (TBM) (a) into towbar hitchbox (b), aligning hole in TBM shank (c) with hole in hitchbox (d) (Fig. 1)

### STEP 2

Insert Silent Anti-Rattle Hitch Pin (e) through hole in hitchbox and hole in TBM shank (g); ensure the locators are inserted into the notches in the hitchbox (Fig. 2)

### STEP 3

Screw Silent Anti-Rattle Hitch Pin Nut (f) onto Smart Pin (g); tighten Smart Pin Nut until finger tight, ensuring TBM is restrained from up and down movement.

### STEP 4

Tighten Silent Anti-Rattle Hitch Pin Nut by turning nut a further 1/8th of a turn in the clockwise direction using a 24mm spanner (Fig. 4).

### STEP 5

Install Silent Anti-Rattle Hitch Pin R-Clip through the hole that provides best clearance or easiest access. (Fig. 5)

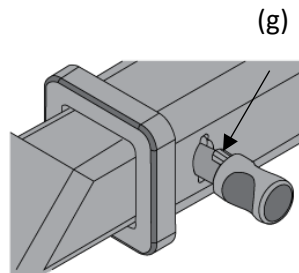
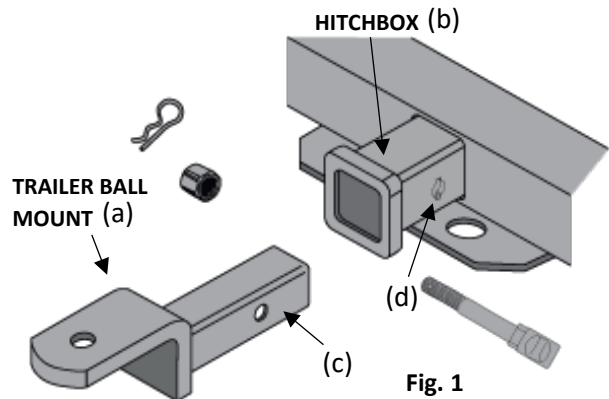


Fig. 2

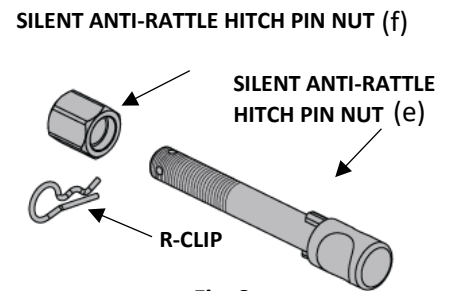


Fig. 3

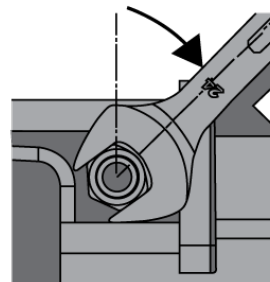


Fig. 4

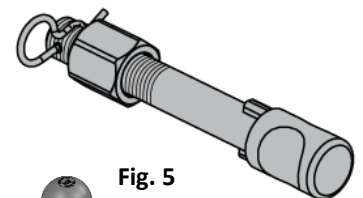


Fig. 5

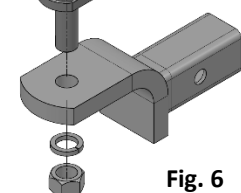


Fig. 6