



Towbar Fitting Instructions
To Suit **JEEP COMPASS M6 CL4**
Part Number **QTJP19L**
Rating **1500/150 kg**

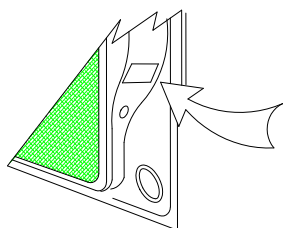
PLACE THESE INSTRUCTIONS IN THE VEHICLE'S GLOVEBOX AFTER INSTALLATION IS COMPLETED

WARNING:

1. Do not, drill, cut, weld or otherwise modify the tow bar.
2. If you are using electric welding on a motor vehicle, **always** check that the vehicle is not equipped with electronic engine or instrument management equipment. Failure to do so could **destroy** any onboard computers. If in doubt, check with the vehicle's manufacturer.
3. The high tensile fasteners supplied with this product were used to achieve the specified rating. If replacement is required ensure that fasteners of the same rating & quality are used. Contact an authorised **Trailboss** dealer if further information is required.
4. If TBM is used in inverted position tow ball may make contact with rear tailgate when lowered, which could cause damage.

General:

1. Ensure all hardware items have been included refer to assembly diagram.
2. It is recommended that the instructions are read through and completely understood before making any attempt to fit this product.
3. Be wary of any changes to vehicle designs or other accessories that may conflict with the installation of this product.
4. Before drilling ensure that the area is clear of fuel, electrical & other components.
5. All holes drilled into the body panels shall have all burrs & swarf removed then coated with a suitable rust preventative paint.
6. For vehicles that require the bumper to be cut. Ensure cut out area is in correct position on the vehicle prior to cutting the bumper.
7. The high tensile fasteners supplied with this product were used to achieve the specified rating. If replacement is required ensure that fasteners of the same rating & quality are used. Contact an authorized **Trailboss** dealer if further information is required.
8. Ensure that all hardware is fastened to torque list below check fasteners on regular basis.
9. Tow bar load rating sticker provided with this product shall be conspicuously located on inside rear end of the driver's door. **(See diagram below).**
10. Trailboss recommends that you check your tow ball to ensure that it complies with the Australian standards **AS 4177.2**.
11. **PLEASE NOTE:** It is advised to remove your LUG or TBM when not actually towing so as to produce a clear view of the vehicles registration plate if obscured, and to also provide maximum available departure angle



Place load rating sticker
inside driver's door here

FOR TRAILER TOWING PURPOSES ONLY
For towing capacity details please refer to vehicle owner's manual or to the manufacturer. Overloading can void your warranty.

RECOMMENDED ASSEMBLY TORQUE LISTING

<u>Diameter</u>	<u>Grade 8.8 Bolt</u>
M6	9.5 Nm
M8	21.7 Nm
M10	43.4 Nm
M12	77.3Nm
M14	146 Nm

Tow bar Maintenance and Care.

Trailboss recommends that bolt torque's, as listed below, are routinely and regularly inspected and checked for correct tension. Replace any worn or defective parts.

We recommended to remove Tow Ball Mounts (TBM's, tongues or lugs) when not being used for any considerable length of time.

So as to avoid injury, when not towing it is suggested that the tongue, Pull Pin and R-clip are removed then stored in a safe, clean and dry place, away from excessive moisture.

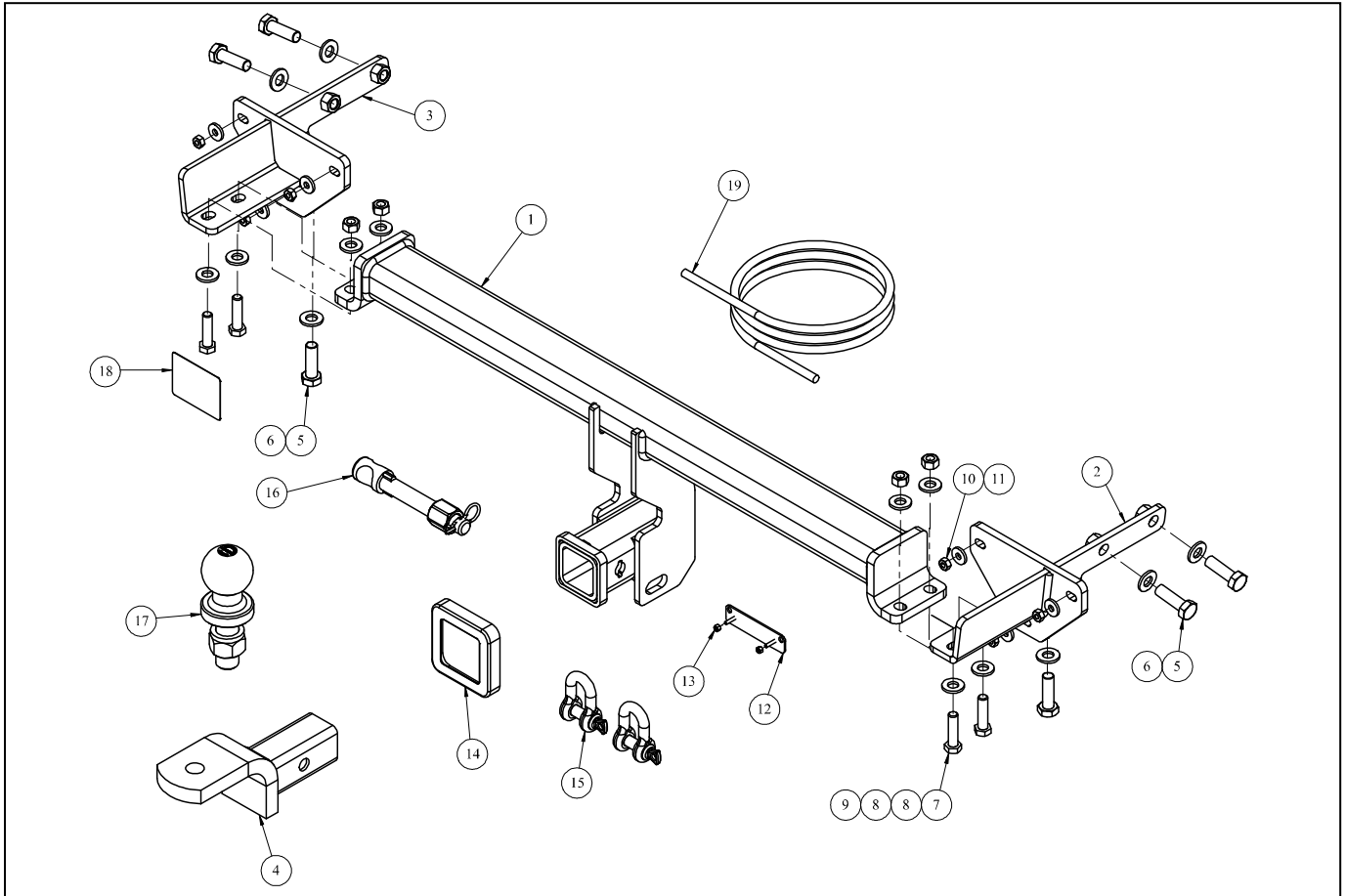
Hitch Pull Pins and spring "R" clips are regularly checked for proper installation. Replace any worn or defective parts.

Cequent Customer Service
Ph: 1800 812 017 Fax: 03 9898 3299
Email: info@cequent.com.au
Post: PO Box 4050, Dandenong South VIC 3175



Towbar Fitting Instructions
To Suit **JEEP COMPASS M6 CL4**
Part Number **QTJP19L**
Rating **1500/150 kg**

PLACE THESE INSTRUCTIONS IN THE VEHICLE'S GLOVEBOX AFTER INSTALLATION IS COMPLETED



ITEM	DESCRIPTION	QTY
1	JEEP COMPASS WELDED ASSEMBLY	1
2	RH SIDE ARM	1
3	LH SIDE ARM	1
4	TRAILER BALL MOUNT	1
5	SET SCREW M14 X 45X 2P G10.9	6
6	M14 X 28 X 3 Z/P FT WASHER	6
7	SET SCREW HEX HD M12x45x1.25P	4
8	WASHER PLAIN 1/2X1-1/8X16G	8
9	NUT HEX HD M12 X 1.25P G8	4
10	M8 - 1.25 NUT	6

ITEM	DESCRIPTION	QTY
11	WASHER PLAIN M8 X 22 X 3	6
12	PLUG BRACKET	1
13	NUT NYLON LOCK HEX HD M4X0.7P	2
14	HITCH BOX COLLAR COVER	1
15	10mm "D" SHACKLE	2
16	SILENT HITCH PIN - SILVER	1
17	50mm TOWBALL	1
18	ACRYLIC COMPLIANCE LABEL	1
19	WIRING LOOM	1

Cequent Customer Service
Ph: 1800 812 017 Fax: 03 9898 3299
Email: info@cequent.com.au
Post: PO Box 4050, Dandenong South VIC 3175



Towbar Fitting Instructions
To Suit **JEEP COMPASS M6 CL4**
Part Number **QTJP19L**
Rating **1500/150 kg**

PLACE THESE INSTRUCTIONS IN THE VEHICLE'S GLOVEBOX AFTER INSTALLATION IS COMPLETED

1. Open tail gate. Remove 2 x covers on tail-light to expose tail-light fasteners.

Repeat for opposite side.



2. Remove 2 x torx head screws securing tail-light.

Repeat for opposite side.

3. Remove tail-lights by firmly pulling rearwards. Disconnect tail-light plug from vehicle. Set safely aside.

Repeat for opposite side.



4. Remove 2 x torx screws from around boot opening on bumper.



Cequent Customer Service

Ph: 1800 812 017 Fax: 03 9898 3299

Email: info@cequent.com.au

Post: PO Box 4050, Dandenong South VIC 3175



Towbar Fitting Instructions
To Suit **JEEP COMPASS M6 CL4**
Part Number **QTJP19L**
Rating **1500/150 kg**

PLACE THESE INSTRUCTIONS IN THE VEHICLE'S GLOVEBOX AFTER INSTALLATION IS COMPLETED

5. Remove 3 x Phillips head screws from inside wheel arch well.

Repeat for opposite side.



6. Peel back trim surrounding wheel arch and remove 1 x hex head screw (now exposed) from bumper.

Repeat for opposite side.



7. Remove 2 x torx head screws from underside of bumper.

8. Carefully peel back bumper from corners and disconnect any attached wiring. Set bumper aside.



Cequent Customer Service

Ph: 1800 812 017 Fax: 03 9898 3299

Email: info@cequent.com.au

Post: PO Box 4050, Dandenong South VIC 3175



Towbar Fitting Instructions
To Suit **JEEP COMPASS M6 CL4**
Part Number **QTJP19L**
Rating **1500/150 kg**

PLACE THESE INSTRUCTIONS IN THE VEHICLE'S GLOVEBOX AFTER INSTALLATION IS COMPLETED

9. Remove impact beam via 6 x hex head nuts from rear panel. Discard impact beam and nuts.



10. Remove 3 x plugs from chassis rail covering towbar mounting points. Discard plugs.
- Repeat for opposite side.



11. Insert side arm into chassis rail and loosely secure to rear panel via 3 x M8 nuts complete with 1 x M8 washer per nut.

Loosely secure side arm to chassis rail via 3 x M14 complete with 1 x M14 washer per bolt.

Repeat for opposite side.



Cequent Customer Service

Ph: 1800 812 017 Fax: 03 9898 3299

Email: info@cequent.com.au

Post: PO Box 4050, Dandenong South VIC 3175



Towbar Fitting Instructions
To Suit **JEEP COMPASS M6 CL4**
Part Number **QTJP19L**
Rating **1500/150 kg**

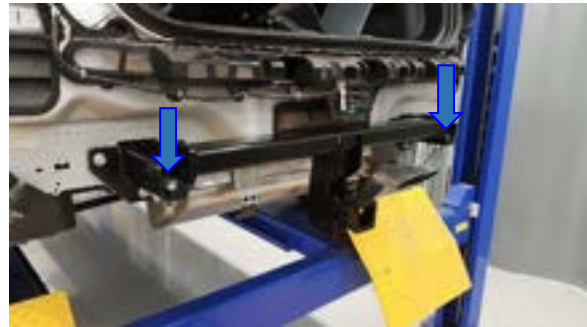
PLACE THESE INSTRUCTIONS IN THE VEHICLE'S GLOVEBOX AFTER INSTALLATION IS COMPLETED

12. Lift centre welded assembly up to vehicle and sit onto side arms.

Loosely secure centre section to side arms with 4 x M12 bolts (2 per side) complete with 2 x washers and 1 x nut per bolt.

Tighten all fasteners to the torques listed below:

M8: 22 N.m
M12: 89 N.m
M14: 175 N.m



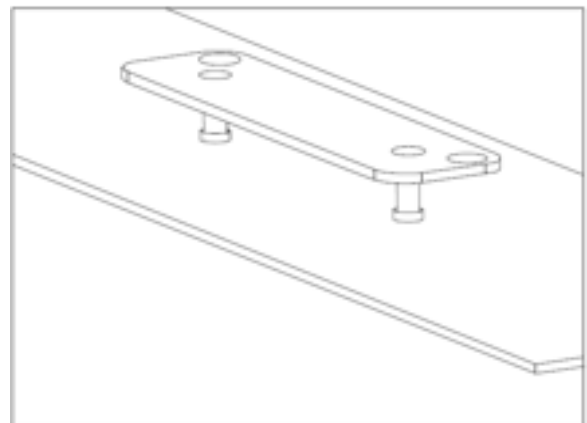
13. Identify the centreline of the bumper. Measure and mark a 200mm tall x 90mm wide rectangle as measured from the bottom edge of the bumper.

Cut the bumper using an appropriate cutting tool ensuring to remove any sharp burrs or edges after cut.



14. Mark out and drill 2 x $\varnothing 5$ mm holes 69mm apart on bumper skin to support plug bracket.

15. Re-fit all components following steps 1-7 in reverse.



Cequent Customer Service

Ph: 1800 812 017 Fax: 03 9898 3299

Email: info@cequent.com.au

Post: PO Box 4050, Dandenong South VIC 3175



Wiring Loom Fitting Instructions
To Suit **Jeep C-SUV**
Part Number **102095-WL**

Wiring Loom Installation Instructions

Jeep C-SUV
Part No: **102095-WL**
ECU: **04826**
Tail Harness Length Required: **1200mm**
RPA Disable Information: Near hazard switch
Electric Brake Wire Location: Near blue connector

Wiring Loom Installation Time: Approx **60 Mins**

Cequent Customer Service
Ph: 1800 812 017 Fax: 03 9898 3299
Email: info@cequent.com.au
Post: PO Box 4050, Dandenong South VIC 3175



Wiring Loom Fitting Instructions
To Suit **Jeep C-SUV**
Part Number **102095-WL**

1. In the engine bay, disconnect the negative quick disconnect battery terminal.
 2. In the boot, remove the floor cover carpet.
 3. Remove the sunshade.
 4. Remove the foam tool storage trays.
 5. Remove the spare wheel.
 6. Remove the two caps covering the T40 torx screws on the rear scuff plate.
 7. Remove the T40 torx screws and the three T10 torx screws from the scuff plate.
 8. Dislodge the rear scuff plate by pulling in an upward direction.
 9. Remove the keyless entry Ariel from the scuff plate if present and remove scuff plate from vehicle.
 10. On the RHS remove the two caps covering the screws securing the C/D pillar trim.
 11. Remove the T15 Torx Screws.
 12. Dislodge the C/D pillar Trim.
 13. Dislodge the RHS trim.
 14. Remove the two bolts and nut securing the subwoofer if present.
 15. Remove the subwoofer.
 16. Locate the RHS vehicle tail light grommet.
 17. Unseat the grommet and push grommet and tail light connector through to the interior of the vehicle.
 18. Route the Trailer Patch Harness (102095-WL) tail light connectors from the interior, through the vehicle tail light harness grommet hole, to the exterior.
 19. Seat the grommet on the patch harness in the hole where the tail light harness grommet was seated.
- Note: Ensure the grommet is seated correctly and makes a good seal.**
20. Route the RHS tail lamp connector on the trailer patch to the RHS tail light.
 21. Route the LHS tail lamp connectors on the trailer patch to the vehicle tail lamp assembly.

Cequent Customer Service
Ph: 1800 812 017 Fax: 03 9898 3299
Email: info@cequent.com.au
Post: PO Box 4050, Dandenong South VIC 3175



Wiring Loom Fitting Instructions
To Suit **Jeep C-SUV**
Part Number **102095-WL**

22. Patch in the LHS tail lamp connectors on the trailer patch to the vehicle tail lamp assembly and vehicle harness.
23. Behind previously removed subwoofer, connect the RHS tail light connector to the trailer patch.
24. Connect the ground wire ring terminal to the vehicle earthing point.
25. Using supplied Cable Ties, secure excess vehicle harness length.

This step is only applicable for vehicles utilising reverse:

26. For reverse connection, route the trailer patch black/white wire branch up to the rear head lining. Locate the harness that runs towards the vehicle tailgate. Following the table below connect the ezy-tap to the mating harness wire. Then connect the trailer patch wire to the ezy-tap.

Function	Trailer Patch	Vehicle Harness
Reverse	White/Black	White wire, Green trace

27. Using an alcohol wipe, clean the RHS area near the RHS grommet and the underside of the ECU (04826).
28. Connect the trailer patch 12-way connector to the ECU.
29. Apply double sided tape to the ECU and secure it to the vehicle.
30. Drill a Ø30mm grommet hole in the RHS rear floor area to enable the tail harness to be routed from the towbar to the ECU via the chassis rail access.
31. Under the vehicle, connect the power harness to the 1-way connector near the LHS chassis rail.
32. Route the power harness along the chassis rail towards the vehicle battery in the engine bay.

Note: Keep routing clear of all sharp edges, moving parts and places of extreme heat.

33. With the rear bumper removed, secure tail harness to towbar.
34. Route tail harness up through chassis rail and previously drilled grommet hole.
35. Seat grommet in 30mm blanking hole and route to trailer harness blue connector on wiring loom.

Note: Keep harness routing clear of all sharp edges, moving parts and places of extreme heat.

Note: Ensure grommet is seated correctly and makes a good seal.

Cequent Customer Service
Ph: 1800 812 017 Fax: 03 9898 3299
Email: info@cequent.com.au
Post: PO Box 4050, Dandenong South VIC 3175



Wiring Loom Fitting Instructions
To Suit **Jeep C-SUV**
Part Number **102095-WL**

- 36. Connect the tail harness (tail length 1200mm) 8-way connector to the trailer patch mating 8-way connector.
- 37. Secure all harness using supplied cable ties.
- 38. Test the trailer patch function using a light board or multi-meter.
- 39. Re-fit all removed parts and secure all fasteners, ensuring there are no squeaks or rattles.
- 40. The RPA function can be disabled via a switch next to the Hazzard light switch.
- 41. Place the fitting instructions in the glove box after fitment.

Cequent Customer Service
Ph: 1800 812 017 Fax: 03 9898 3299
Email: info@cequent.com.au
Post: PO Box 4050, Dandenong South VIC 3175



FITTING INSTRUCTIONS

Silent Anti-Rattle Hitch Pin (PRO001)

• These fitting instructions are supplied to ensure understanding of how the HITCH PIN should be fitted and used correctly.

• Once installed, we recommend **ALL** instructions are kept and placed in the vehicle glove box.

NOTE: Routine maintenance and inspection of the towbar & HITCH PIN is required. Regularly inspect for wear and check the tightness of the Hitch Pin. Follow instructions below to retighten the nut when necessary.

***Do not tow with your vehicle if the R CLIP or the HITCH PIN is loose or missing. Replacement parts are available from your Pro Series Distributor.**

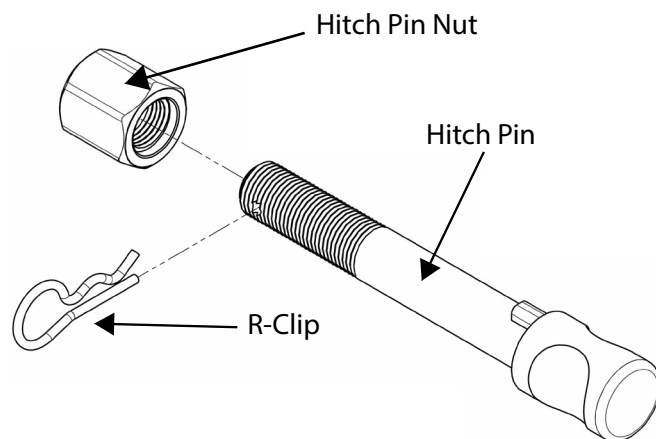


Fig 1. Silent Anti-Rattle Hitch Pin assembly

STEP 1

Insert Trailer Ball Mount (TBM) into towbar HITCHBOX, aligning hole in TBM SHANK with hole in HITCHBOX (Fig 2).

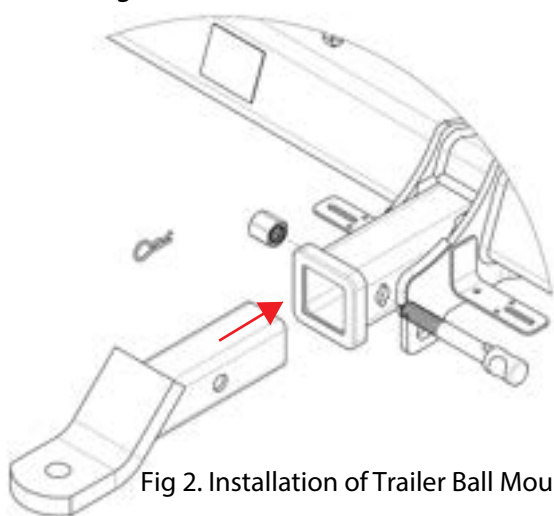


Fig 2. Installation of Trailer Ball Mount

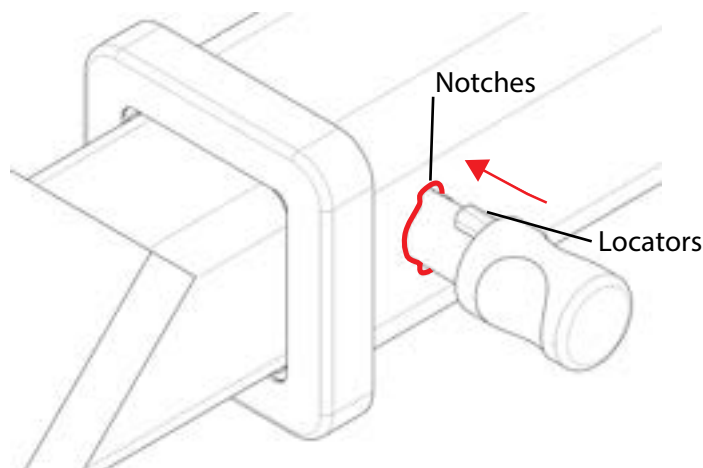


Fig 3. Silent Anti-Rattle Hitch Pin orientation

STEP 2

Insert HITCH PIN through hole in HITCHBOX and hole in TBM SHANK; ensure the LOCATORS are inserted into the NOTCHES in the HITCHBOX (Fig. 3).

STEP 3

Screw HITCH PIN NUT onto HITCH PIN ; tighten HITCH PIN NUT until finger tight, ensuring TBM is restrained from movement.

STEP 4

Tighten HITCH PIN NUT by turning nut a further 1/8th of a turn in the clockwise direction using a 24mm spanner (Fig. 4).

STEP 5

Install HITCH PIN R CLIP through the hole on the HITCH PIN (Fig. 1).

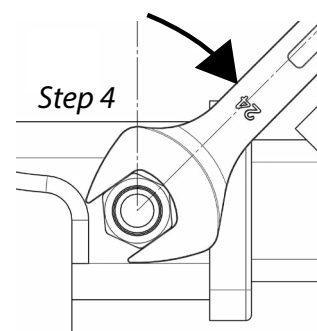


Fig 4. Tightening of Silent Anti-Rattle Hitch Pin Nut