



Towbar Fitting Instructions  
To Suit **HONDA CIVIC 10TH GEN HATCH CL4**  
Part Number **QTHN453L**  
Rating **800/80 kg**

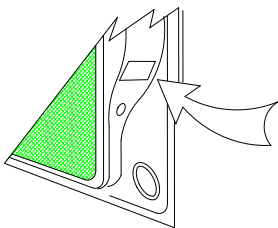
PLACE THESE INSTRUCTIONS IN THE VEHICLE'S GLOVEBOX AFTER INSTALLATION IS COMPLETED

**WARNING:**

1. Do not, drill, cut, weld or otherwise modify the tow bar.
2. If you are using electric welding on a motor vehicle, **always** check that the vehicle is not equipped with electronic engine or instrument management equipment. Failure to do so could **destroy** any onboard computers. If in doubt, check with the vehicle's manufacturer.
3. The high tensile fasteners supplied with this product were used to achieve the specified rating. If replacement is required ensure that fasteners of the same rating & quality are used. Contact an authorised **Trailboss** dealer if further information is required.
4. If TBM is used in inverted position tow ball may make contact with rear tailgate when lowered, which could cause damage.

**General:**

1. Ensure all hardware items have been included refer to assembly diagram.
2. It is recommended that the instructions are read through and completely understood before making any attempt to fit this product.
3. Be wary of any changes to vehicle designs or other accessories that may conflict with the installation of this product.
4. Before drilling ensure that the area is clear of fuel, electrical & other components.
5. All holes drilled into the body panels shall have all burrs & swarf removed then coated with a suitable rust preventative paint.
6. For vehicles that require the bumper to be cut. Ensure cut out area is in correct position on the vehicle prior to cutting the bumper.
7. The high tensile fasteners supplied with this product were used to achieve the specified rating. If replacement is required ensure that fasteners of the same rating & quality are used. Contact an authorized **Trailboss** dealer if further information is required.
8. Ensure that all hardware is fastened to torque list below check fasteners on regular basis.
9. Tow bar load rating sticker provided with this product shall be conspicuously located on inside rear end of the driver's door. **(See diagram below).**
10. Trailboss recommends that you check your tow ball to ensure that it complies with the Australian standards **AS 4177.2**.
11. **PLEASE NOTE:** It is advised to remove your LUG or TBM when not actually towing so as to produce a clear view of the vehicles registration plate if obscured, and to also provide maximum available departure angle



Place load rating sticker  
inside driver's door here

**FOR TRAILER TOWING PURPOSES ONLY**  
For towing capacity details please refer to vehicle owner's manual or to the manufacturer. Overloading can void your warranties.

**RECOMMENDED ASSEMBLY TORQUE LISTING**

Diameter	Grade 8.8 Bolt
M6	9.5 Nm
M8	21.7 Nm
M10	43.4 Nm
M12	77.3Nm
M14	146 Nm
M16	189.8 Nm

**Tow bar Maintenance and Care.**

Trailboss recommends that bolt torque's, as listed below, are routinely and regularly inspected and checked for correct tension. Replace any worn or defective parts.

We recommended to remove Tow Ball Mounts (TBM's, tongues or lugs) when not being used for any considerable length of time.

So as to avoid injury, when not towing it is suggested that the tongue, Pull Pin and R-clip are removed then stored in a safe, clean and dry place, away from excessive moisture.

Hitch Pull Pins and spring "R" clips are regularly checked for proper installation. Replace any worn or defective parts.

**Cequent Customer Service**

Ph: 1800 812 017 Fax: 03 9898 3299

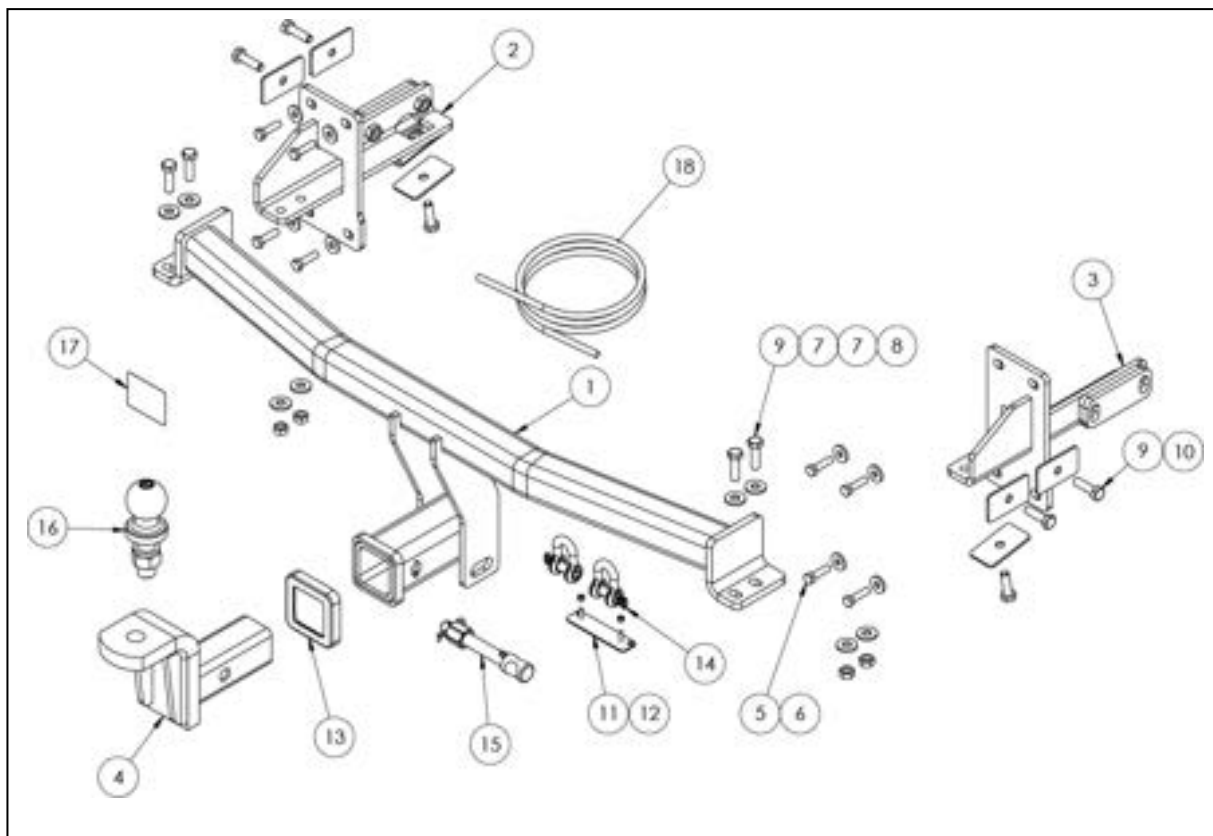
Email: [info@cequent.com.au](mailto:info@cequent.com.au)

Post: PO Box 4050, Dandenong South VIC 3175



Towbar Fitting Instructions  
To Suit **HONDA CIVIC 10TH GEN HATCH CL4**  
Part Number **QTHN453L**  
Rating **800/80 kg**

PLACE THESE INSTRUCTIONS IN THE VEHICLE'S GLOVEBOX AFTER INSTALLATION IS COMPLETED



ITEM	DESCRIPTION	QTY
1	WELDED ASSEMBLY	1
2	LH SIDE ARM	1
3	RH SIDE ARM	1
4	TRAILER BALL MOUNT	1
5	SETSCREW HEX HD M8X30X1.25P G8.8	8
6	WASHER PLAIN M8 X 22 X 3	8
7	WASHER PLAIN M10 X 25 X 3	8
8	NUT HEX HD M10 X 1.25P G8	4
9	SET SCREW HEX HD M10x35x1.25P	10
10	WASHER PLATE	6
11	VE PLUG BRACKET	1
12	NUT NYLON LOCK HEX HD M4X0.7P G8	2

ITEM	DESCRIPTION	QTY
13	HITCH BOX COLLAR COVER	1
14	10mm "D" SHACKLE	2
15	SILENT HITCH PIN - SILVER	1
16	50mm TOWBALL	1
17	ACRYLIC COMPLIANCE LABEL	1
18	WIRING LOOM	1

**Cequent Customer Service**  
Ph: 1800 812 017 Fax: 03 9898 3299  
Email: [info@cequent.com.au](mailto:info@cequent.com.au)  
Post: PO Box 4050, Dandenong South VIC 3175



Towbar Fitting Instructions  
To Suit **HONDA CIVIC 10TH GEN HATCH CL4**  
Part Number **QTHN453L**  
Rating **800/80 kg**

PLACE THESE INSTRUCTIONS IN THE VEHICLE'S GLOVEBOX AFTER INSTALLATION IS COMPLETED

1. Remove 2 x torx head bolts from LHS of boot opening.

Repeat for RHS.



2. Remove 2 x phillips head screws from wheel arch lining on LHS.

Repeat for RHS.



3. Remove 4 x scrivenets from underside of bumper on LHS.

Repeat for RHS.



**Cequent Customer Service**

Ph: 1800 812 017 Fax: 03 9898 3299

Email: [info@cequent.com.au](mailto:info@cequent.com.au)

Post: PO Box 4050, Dandenong South VIC 3175



**Towbar Fitting Instructions**  
To Suit **HONDA CIVIC 10TH GEN HATCH CL4**  
Part Number **QTHN453L**  
Rating **800/80 kg**

PLACE THESE INSTRUCTIONS IN THE VEHICLE'S GLOVEBOX AFTER INSTALLATION IS COMPLETED

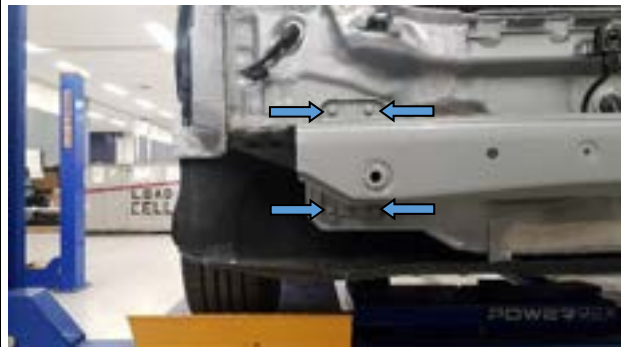
4. Carefully peel back bumper from corners. Disconnect any attached wiring and set bumper aside.



5. Remove 4 x bolts retaining impact beam on LHS.

Repeat for RHS.

Remove and discard impact beam.



6. Remove floor covering from the underside of the vehicle via 2 x plastic hex head nuts, 1 x scrivers, and 1 x hex head bolt.

Set floor covering aside.



**Cequent Customer Service**

Ph: 1800 812 017 Fax: 03 9898 3299

Email: [info@cequent.com.au](mailto:info@cequent.com.au)

Post: PO Box 4050, Dandenong South VIC 3175



Towbar Fitting Instructions  
To Suit **HONDA CIVIC 10TH GEN HATCH CL4**  
Part Number **QTHN453L**  
Rating **800/80 kg**

PLACE THESE INSTRUCTIONS IN THE VEHICLE'S GLOVEBOX AFTER INSTALLATION IS COMPLETED

7. **FOR SINGLE EXHAUST (SHOWN):**

On RHS, lower exhaust by releasing from 2 x rubber hangers. Ensure exhaust is supported.

**FOR DUEL EXHAUST (NOT SHOWN):**

Lower both exhausts by releasing from 2 x rubber hangers on LHS and RHS. Ensure exhausts are supported.



8. **FOR SINGLE EXHAUST (SHOWN):**

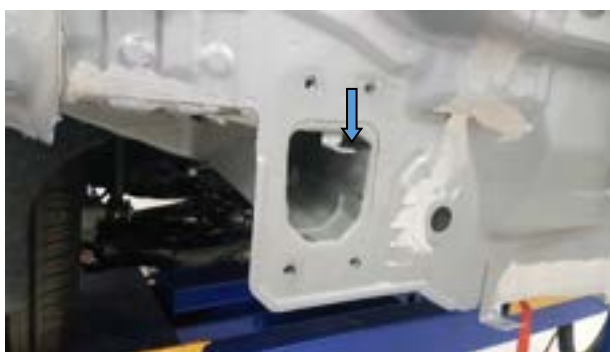
Remove heat shield on RHS via 3 x hex head screws shown. Set heat shield aside for later.

**FOR DUEL EXHAUST (NOT SHOWN):**

Remove 1 x heat shield on RHS and LHS via 3 x hex head screws per side (2 shown). Set heat shields aside for later.



9. Bend impact beam locating tabs down until they are in line with rear panel on LHS and RHS using a rubber mallet.



**Cequent Customer Service**

Ph: 1800 812 017 Fax: 03 9898 3299

Email: [info@cequent.com.au](mailto:info@cequent.com.au)

Post: PO Box 4050, Dandenong South VIC 3175





**Towbar Fitting Instructions**  
To Suit **HONDA CIVIC 10TH GEN HATCH CL4**  
Part Number **QTHN453L**  
Rating **800/80 kg**

PLACE THESE INSTRUCTIONS IN THE VEHICLE'S GLOVEBOX AFTER INSTALLATION IS COMPLETED

10. Cut-out supplied hole templates and stick LHS template to the outboard face of the LH chassis rail. Ensure template is aligned with reference edges shown.

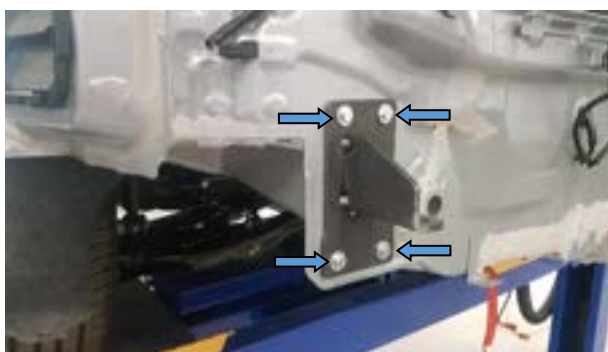
Centre mark and drill a 15mm diameter hole using an appropriate hole saw or drill bit. Remove any burrs or sharp edges made from the cut and coat in an appropriate rust inhibitor.

Use RH hole template around and repeat process for RHS.



11. Insert LH side arm into chassis rail. Loosely secure with 4 x M8 bolts to vehicle rear panel complete with 1 x M8 washer per bolts.

Repeat for RHS.



**Cequent Customer Service**

Ph: 1800 812 017 Fax: 03 9898 3299

Email: [info@cequent.com.au](mailto:info@cequent.com.au)

Post: PO Box 4050, Dandenong South VIC 3175



**Towbar Fitting Instructions**  
To Suit **HONDA CIVIC 10TH GEN HATCH CL4**  
Part Number **QTHN453L**  
Rating **800/80 kg**

PLACE THESE INSTRUCTIONS IN THE VEHICLE'S GLOVEBOX AFTER INSTALLATION IS COMPLETED

12. Loosely secure side arms to chassis rail with 2 x M10 bolts on outboard side of rail (holes drilled in Step 10) and 1 x M10 bolt on bottom face of chassis. Ensure each bolt is fitted with 1 x washer plate per bolt.

Repeat for RHS.



13. Lift towbar to side arms and loosely secure LHS with 2 x M10 bolts, complete with 2 x M10 washers and 1 x M10 nut per bolt.

Repeat for RHS.

Tighten all fasteners to the torques listed below:

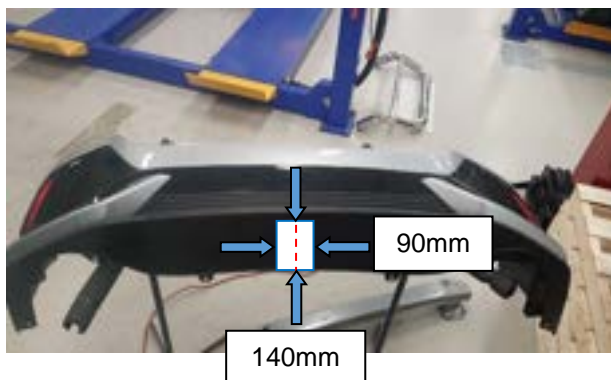
M8 x 1.25 : 22 N.m

M10 x 1.25 : 48 N.m



14. Identify the centre of the bumper. Measure and cut a rectangle 90mm wide x 140mm tall as measure from the bottom inside edge of bumper, centred about the bumper centreline.

Remove any burrs or rough edges after cut.



**Cequent Customer Service**

Ph: 1800 812 017 Fax: 03 9898 3299

Email: [info@cequent.com.au](mailto:info@cequent.com.au)

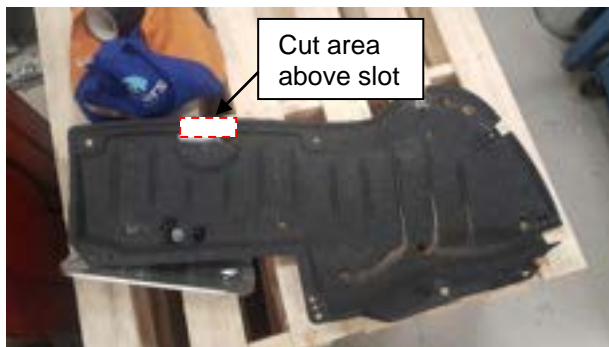
Post: PO Box 4050, Dandenong South VIC 3175



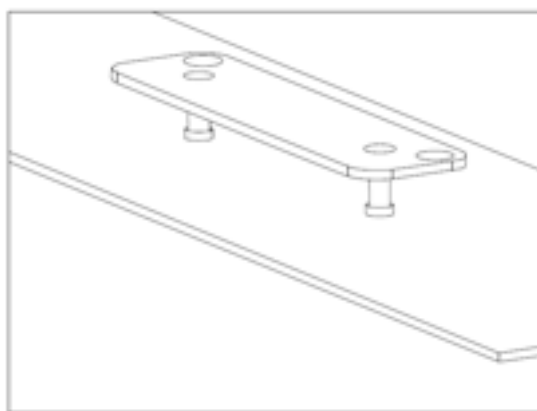
Towbar Fitting Instructions  
To Suit **HONDA CIVIC 10TH GEN HATCH CL4**  
Part Number **QTHN453L**  
Rating **800/80 kg**

PLACE THESE INSTRUCTIONS IN THE VEHICLE'S GLOVEBOX AFTER INSTALLATION IS COMPLETED

15. Trim small section of floor undercover (removed in Step 6) as illustrated.



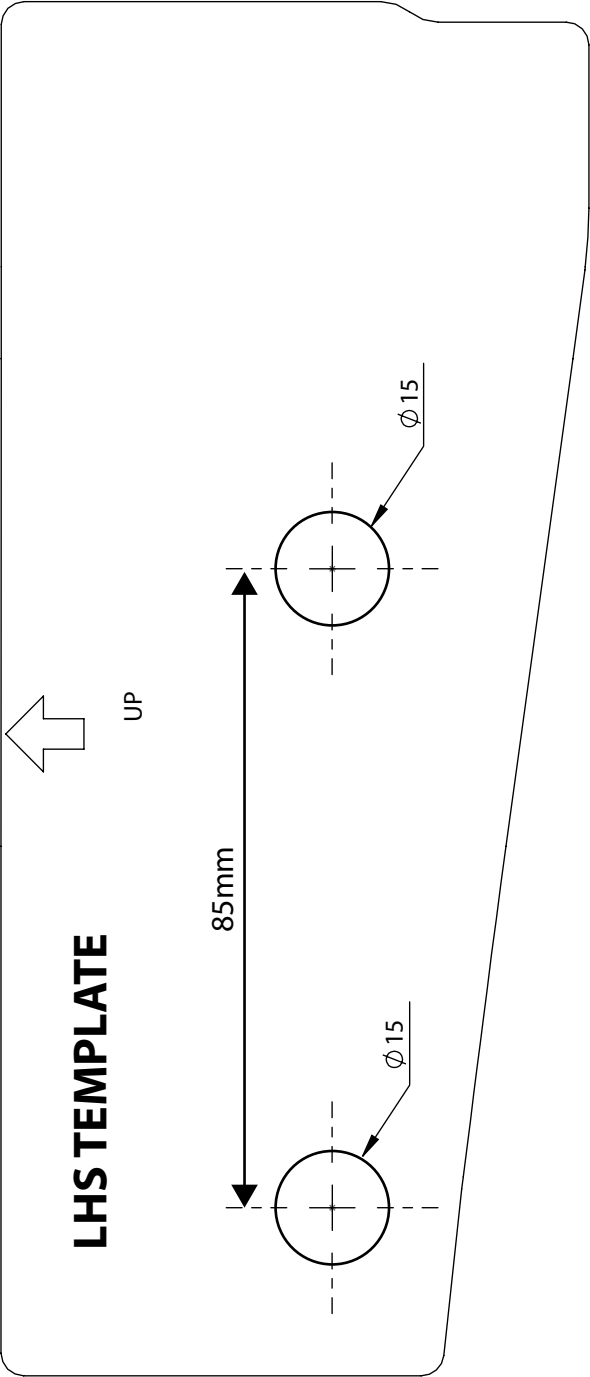
16. Mark out and drill 2 x  $\varnothing 5$ mm holes 69mm apart on bumper skin to support plug bracket.
17. Reinstall bumper following Steps 1– 8 in reverse.



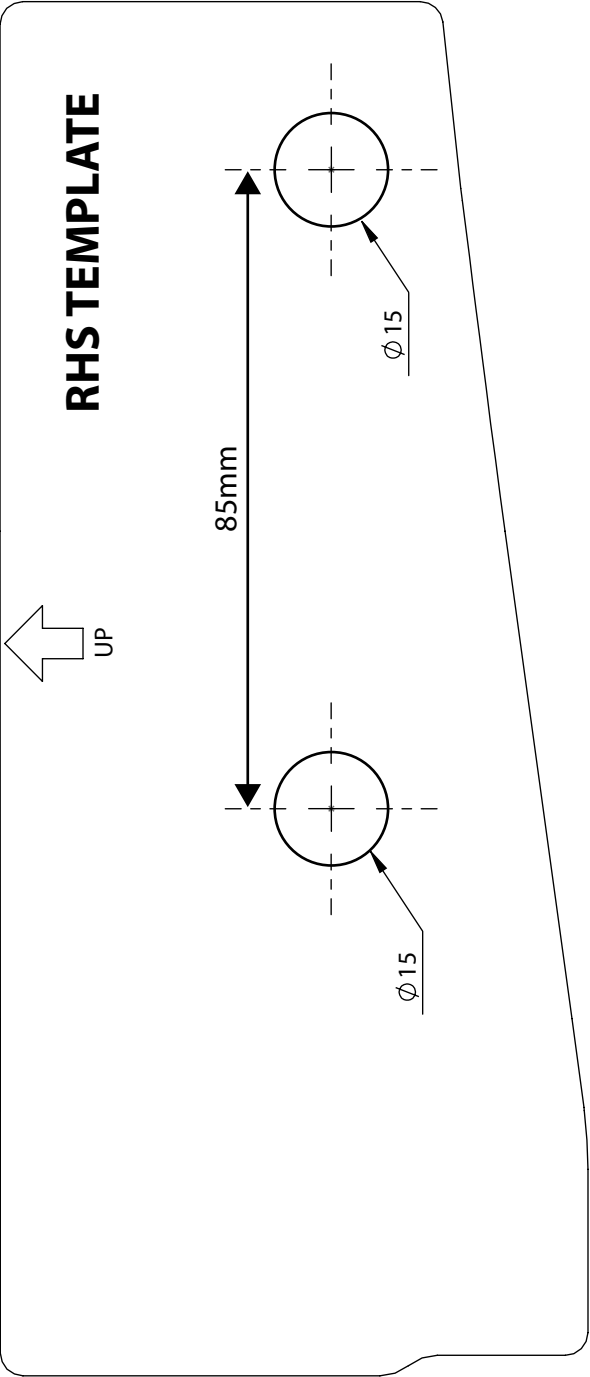
**Cequent Customer Service**  
Ph: 1800 812 017 Fax: 03 9898 3299  
Email: [info@cequent.com.au](mailto:info@cequent.com.au)  
Post: PO Box 4050, Dandenong South VIC 3175



REFERENCE EDGE



**RHS TEMPLATE**



REFERENCE EDGE



Wiring Loom Fitting Instructions  
To Suit Honda Civic Hatch  
Part Number 101649-WL

## Wiring Loom Installation Instructions

Honda Civic Hatch  
Part No: 101649-WL

Tail Harness Length Required: 1200mm  
ECU Required: 04836

Wiring Loom Installation Time: Approx 60 Mins



Wiring Loom Fitting Instructions  
To Suit Honda Civic Hatch  
Part Number 101649-WL

1. Disconnect negative battery terminal.
2. Remove the luggage compartment floor lining.
3. Remove the rear luggage compartment scuff plate.
4. Fold forward the rear seats.
5. Dislodge the LHS luggage compartment trim and then remove the trim behind the seatbelt.
6. Starting from behind the LHS luggage compartment, route the Trailer Harness up and around the seatbelt, following existing harnesses where possible.
7. Remove the 10mm bolt and remove LHS rear door sill trim and dislodge the 'B' pillar trim.
8. Following the vehicle harness, route the Trailer Wiring Harness towards the front.
9. Remove LHS front door sill trim.
10. Following the vehicle harness, continue routing the Trailer Wiring Harness towards the front.
11. Remove the LHS kick panel trim and route the Trailer Wiring Harness up and around the foot well.
12. Route the Trailer Wiring Harness from passenger side to the driver's side.  
**Pull through at least 1000mm.**
13. Cable Tie (not supplied) the Harness out of the way from any moving parts following existing wiring where possible.
14. Remove the highlighted 20A fuse from cabin relay/fuse holder.
15. Insert the supplied 20-amp fuses into the upper and lower slots of the add-a-fuse.
16. Insert the add-a-fuse into the slot of the previously removed fuse.
17. Connect the Trailer Wiring Harness to the add-a-fuse mating connector.
18. Behind the panel in the driver's side foot well, locate the vehicle green 22-way connector and remove it.
19. Insert the trailer wiring T-Patch between the vehicle tail light control unit and previously dislodged connector as shown.
20. In the LHS of the luggage compartment, use a multi-meter to locate, tail signal.
21. Using the supplied ezy tap, connect the trailer wiring to the tail, according to the table.



Wiring Loom Fitting Instructions  
To Suit Honda Civic Hatch  
Part Number 101649-WL

22. Connect the Trailer Wiring Harness to the ECU and Mount in the location shown.  
**Ensure ECU is mounted with the connector pointing downwards.**
23. Route harness towards rear RHS.
24. Remove vehicles 30mm grommet.
25. Secure the Trailer Wiring Harness ground ring terminal to the vehicle earth point.
26. At the rear exterior of the vehicle, mount the tail harness (1200mm) socket to the towbar mounting bracket using M4 fasteners (not supplied).
27. Route the tail harness up and across the RHS into the exposed grommet hole.
28. Adjust the trailer patch harness grommet so that it is seated correctly and cable tie (not supplied) in place.
29. Connect the tail harness 8-way connector to the trailer patch 8-way mating connector.
30. Test the trailer wiring harness function using a light board or multi-meter. Secure all harnesses using cable ties (not supplied).
31. Re-fit all removed parts and secure all fasteners, ensuring there are no squeaks or rattles.
32. Place the fitting instructions in the glove box after fitment.



# FITTING INSTRUCTIONS

## Silent Anti-Rattle Hitch Pin (PRO001)

• These fitting instructions are supplied to ensure understanding of how the HITCH PIN should be fitted and used correctly.

• Once installed, we recommend **ALL** instructions are kept and placed in the vehicle glove box.

**NOTE: Routine maintenance and inspection of the towbar & HITCH PIN is required. Regularly inspect for wear and check the tightness of the Hitch Pin. Follow instructions below to retighten the nut when necessary.**

**\*Do not tow with your vehicle if the R CLIP or the HITCH PIN is loose or missing. Replacement parts are available from your Pro Series Distributor.**

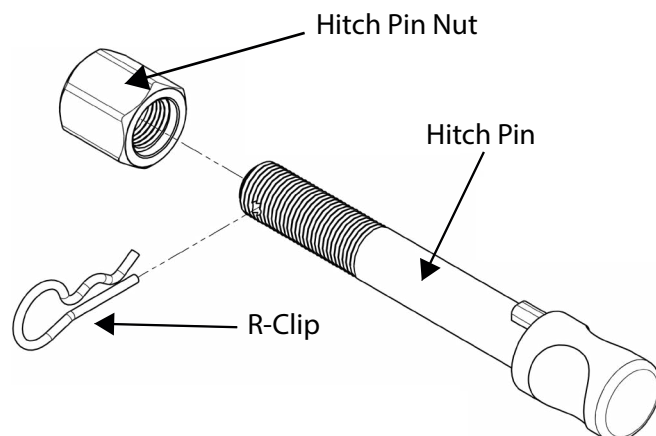


Fig 1. Silent Anti-Rattle Hitch Pin assembly

### STEP 1

Insert Trailer Ball Mount (TBM) into towbar HITCHBOX, aligning hole in TBM SHANK with hole in HITCHBOX (Fig 2).

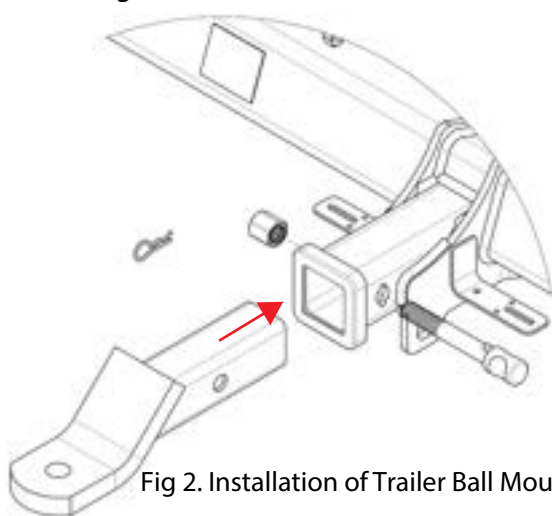


Fig 2. Installation of Trailer Ball Mount

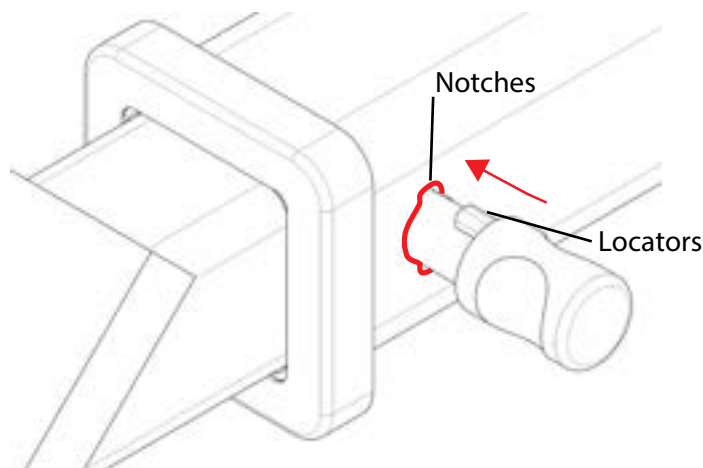


Fig 3. Silent Anti-Rattle Hitch Pin orientation

### STEP 2

Insert HITCH PIN through hole in HITCHBOX and hole in TBM SHANK; ensure the LOCATORS are inserted into the NOTCHES in the HITCHBOX (Fig. 3).

### STEP 3

Screw HITCH PIN NUT onto HITCH PIN ; tighten HITCH PIN NUT until finger tight, ensuring TBM is restrained from movement.

### STEP 4

Tighten HITCH PIN NUT by turning nut a further 1/8th of a turn in the clockwise direction using a 24mm spanner (Fig. 4).

### STEP 5

Install HITCH PIN R CLIP through the hole on the HITCH PIN (Fig. 1).

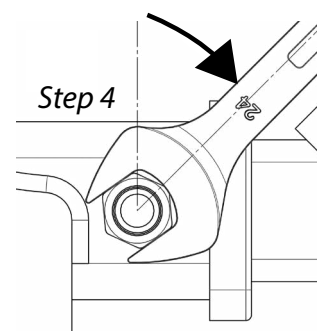


Fig 4. Tightening of Silent Anti-Rattle Hitch Pin Nut