



Towbar Fitting Instructions  
To Suit Holden WH Statesman 6-99 on  
Part Number QTHD486  
Rating 2100Kg

1. Remove the spare wheel, rear plastic storage bin, bumper bar, bumper stiffener and stiffener brackets. Retain the four M12 nuts (Item3) from the stiffener brackets.
2. From inside the spare wheel well remove the grommet, which is located in the centre of the rear boot panel.
3. Offer the outer stiffening bracket (Item 14) to the under side of the spare wheel well, position over the 2 existing 10mm studs and loosely secure using M10 spring washers and M10 x 1.5p nuts (Items 4 and 5).
4. Offer towbar (Item 1) to vehicle, refit bumper stiffener brackets and loosely secure using,  $\frac{1}{2}$ " spring washers, M12 flat washer and existing M12 nuts (Items 3, 10 and 12).
5. Position the inner-stiffening bracket (Item 13) and align with holes in rear boot panel, mark position of inner stiffening bracket. Remove all excessive body deadener. Reposition stiffening bracket and secure through rear boot panel and into towbar using  $\frac{1}{2}$ " x 1  $\frac{1}{2}$ " unc bolts, spring washers, and nuts. (Item 9, 10, and 11)
6. Using remaining holes in inner and outer stiffening brackets as a guide, drill through wheel well of vehicle and fit  $\frac{1}{2}$ " unc bolts, spring washers, fitting plates and nuts. (Item 9, 16, 10, 11 and 15)
7. Tighten all bolts to correct torque settings as listed below.
8. Reposition plastic storage bin and secure passengers side with existing screw.
9. For drivers side, drill new hole in metal mounting tab and secure with remaining screw.
10. Fit plastic trim buttons to storage bins.
11. Refit bumper stiffener and bumper bar.
12. Replace spare tyre.
13. Secure the hitch box collar (Item 19) over hitch box by applying firm even pressure.
14. Secure the tongue (Item 2) to the towbar using pull pin and "R" clip (Items 17 and 18).

**NOTE: TO PREVENT POSSIBLE DAMAGE TO VEHICLE REFER TO THE OWNERS  
MANUAL OR YOUR HOLDEN DEALER FOR THE REQUIRED ACCESSORIES FOR  
TOWING HIGH LOADS.**



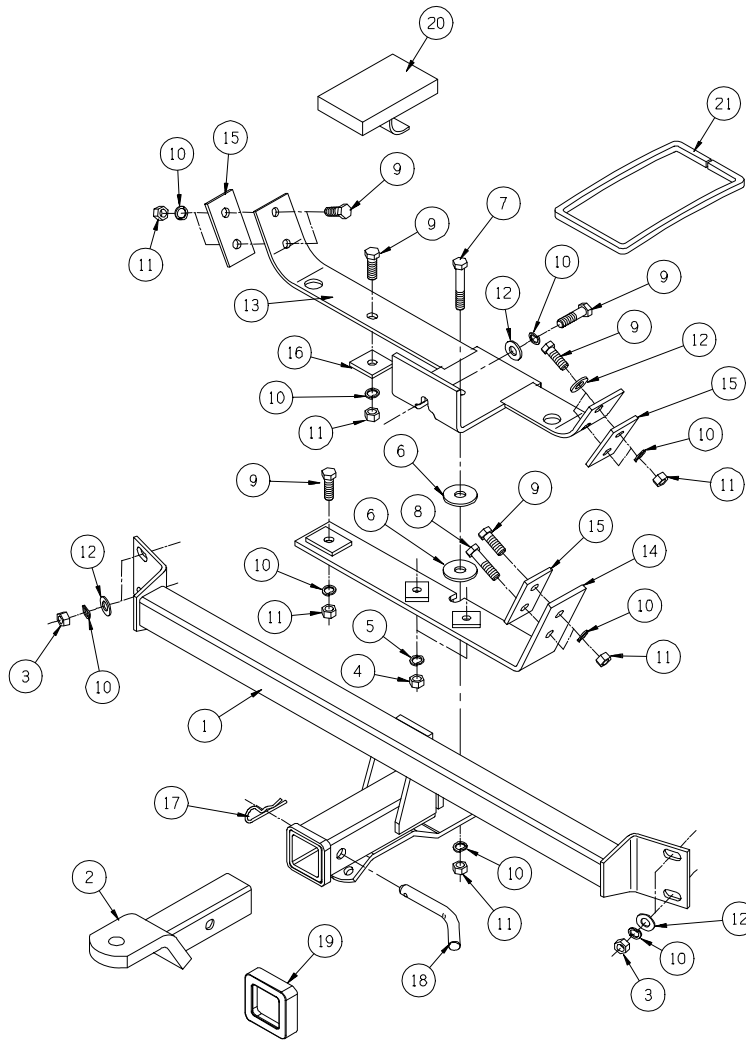
Towbar Fitting Instructions  
To Suit Holden WH Statesman 6-99 on  
Part Number QTHD486  
Rating 2100Kg

<b><u>COMPONENT KIT</u></b>			
<b><u>ITEM</u></b>	<b><u>DESCRIPTION</u></b>	<b><u>QTY</u></b>	<b><u>TORQUE <i>N</i></u></b>
1	Towbar	1	
2	Tongue (5012)	1	
3	Existing M12 Nuts (nuts removed from vehicle, not supplied in kit.)	4	77
4	M10 x 1.5p nuts	2	44
5	M10 Spring Washers	2	
6	<sup>5</sup> / <sub>8</sub> " Flat Washers (Large) 48.5 O.D x 4mm thick	2	
7	<sup>1</sup> / <sub>2</sub> " x 3" unc bolt	1	125
8	<sup>1</sup> / <sub>2</sub> " x 2" unc bolt	1	125
9	<sup>1</sup> / <sub>2</sub> " x 1 <sup>1</sup> / <sub>2</sub> " unc bolt	8*	125
10	<sup>1</sup> / <sub>2</sub> " Spring Washer	14	
11	<sup>1</sup> / <sub>2</sub> " unc Nut	9	
12	M12 Flat Washers	7	
13	Inner Stiffening Bracket Assembly	1	
14	Outer Stiffening Bracket Assembly	1	
15	Dual Hole Fitting Plate (50 X 6 X 100)	3	
16	Fitting Plate (45 X 6 X 45)	1	
17	"R" Clip	1*	
18	Pull Pin	1*	
19	Hitch Box Collar	1	
20	Foam Pad (65 x 8 x 60)	1	
21	Bumper Cut Out Trim (Pinch Weld 66-035) x 530mm	1	

NOTE: \* ONE OF EACH ITEM IS USED TO SECURE THE LOOSE ITEMS TO THE TOWBAR DURING TRANSIT.



Towbar Fitting Instructions  
To Suit Holden WH Statesman 6-99 on  
Part Number QTHD486  
Rating 2100Kg



**Wire Loom**

Signal	Wiring Harness	RHS of Vehicle	LHS of Vehicle
RH Turn	Green	Blue	
LH Turn	Yellow	Light Blue	
Stop	Red	Blue/Red	
Tail Light	Brown	Brown	
Earth	White	Blue/Black	