



Towbar Fitting Instructions
To Suit **TOYOTA AVALON SEDAN**
Part Number **QT1130L**
Rating **1600/160 kg**

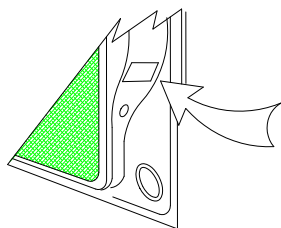
PLACE THESE INSTRUCTIONS IN THE VEHICLE'S GLOVEBOX AFTER INSTALLATION IS COMPLETED

WARNING:

1. Do not, drill, cut, weld or otherwise modify the tow bar.
2. If you are using electric welding on a motor vehicle, **always** check that the vehicle is not equipped with electronic engine or instrument management equipment. Failure to do so could **destroy** any onboard computers. If in doubt, check with the vehicle's manufacturer.
3. The high tensile fasteners supplied with this product were used to achieve the specified rating. If replacement is required ensure that fasteners of the same rating & quality are used. Contact an authorised **Trailboss** dealer if further information is required.
4. If TBM is used in inverted position tow ball may make contact with rear tailgate when lowered, which could cause damage.

General:

1. Ensure all hardware items have been included refer to assembly diagram.
2. It is recommended that the instructions are read through and completely understood before making any attempt to fit this product.
3. Be wary of any changes to vehicle designs or other accessories that may conflict with the installation of this product.
4. Before drilling ensure that the area is clear of fuel, electrical & other components.
5. All holes drilled into the body panels shall have all burrs & swarf removed then coated with a suitable rust preventative paint.
6. For vehicles that require the bumper to be cut. Ensure cut out area is in correct position on the vehicle prior to cutting the bumper.
7. The high tensile fasteners supplied with this product were used to achieve the specified rating. If replacement is required ensure that fasteners of the same rating & quality are used. Contact an authorized **Trailboss** dealer if further information is required.
8. Ensure that all hardware is fastened to torque list below check fasteners on regular basis.
9. Tow bar load rating sticker provided with this product shall be conspicuously located on inside rear end of the driver's door. **(See diagram below).**
10. Trailboss recommends that you check your tow ball to ensure that it complies with the Australian standards **AS 4177.2.**
11. **PLEASE NOTE:** It is advised to remove your LUG or TBM when not actually towing so as to produce a clear view of the vehicles registration plate if obscured, and to also provide maximum available departure angle
12. Pull Pin must be fit in down position.



Place load rating sticker
inside driver's door here

FOR TRAILER TOWING PURPOSES ONLY
For towing capacity details please refer to vehicle owner's manual or to the manufacturer. Overloading can void your warranties.

RECOMMENDED ASSEMBLY TORQUE LISTING

Diameter	Grade 8.8 Bolt
M6	9.5 Nm
M8	21.7 Nm
M10	43.4 Nm
M12	77.3Nm
M14	146 Nm
M16	189.8 Nm

Tow bar Maintenance and Care.

Trailboss recommends that bolt torque's, as listed below, are routinely and regularly inspected and checked for correct tension. Replace any worn or defective parts.

We recommended to remove Tow Ball Mounts (TBM's, tongues or lugs) when not being used for any considerable length of time.

So as to avoid injury, when not towing it is suggested that the tongue, Pull Pin and R-clip are removed then stored in a safe, clean and dry place, away from excessive moisture.

Hitch Pull Pins and spring "R" clips are regularly checked for proper installation. Replace any worn or defective parts.

Rev: A

Page 1

Issue Date: **07-08-2015**

Cequent Customer Service
Ph: 1800 812 017 Fax: 03 9898 3299
Email: info@cequent.com.au
Post: PO Box 4050, Dandenong South VIC 3175



Towbar Fitting Instructions
To Suit **TOYOTA AVALON SEDAN**
Part Number **QT1130L**
Rating **1600/160 kg**

PLACE THESE INSTRUCTIONS IN THE VEHICLE'S GLOVEBOX AFTER INSTALLATION IS COMPLETED

1. Ensure all hardware items have been included.
2. Remove spare wheel.
3. Remove interior trim to allow access to bumper nuts.
4. Remove all nuts and bolts that secure bumper to car.
5. Remove bumper.
6. Remove and discard steel bumper insert.
7. Remove and discard centre bottom bumper mounting tag diagram A.
8. Slide cross member into sub frame cavities.
9. Fit 4-M10x30 bolts, spring washers, flat washers and tighten.
10. Bolt long member to cross member with 3-M12x40 bolts, spring washers, nuts and tighten.
11. Using long 11mm drill, drill up through holes in long member angle iron into boot floor (Alternatively holes can be marked from under car with centre punch and drilled from inside boot). Fit bolts loose plates supplied.
12. Using rearward most remaining tail plate as a guide, drill to 11mm. Fit bolts and loose plates supplied.
13. Refit bumper.
14. Refit spare wheel.
15. Refit interior trim.
16. Tighten all bolts to torque listing below.
17. Towbar rating sticker to be conspicuously located on inside rear end of the driver's door. (see diagram below)



Towbar Fitting Instructions
To Suit **TOYOTA AVALON SEDAN**
Part Number **QT1130L**
Rating **1600/160 kg**

PLACE THESE INSTRUCTIONS IN THE VEHICLE'S GLOVEBOX AFTER INSTALLATION IS COMPLETED

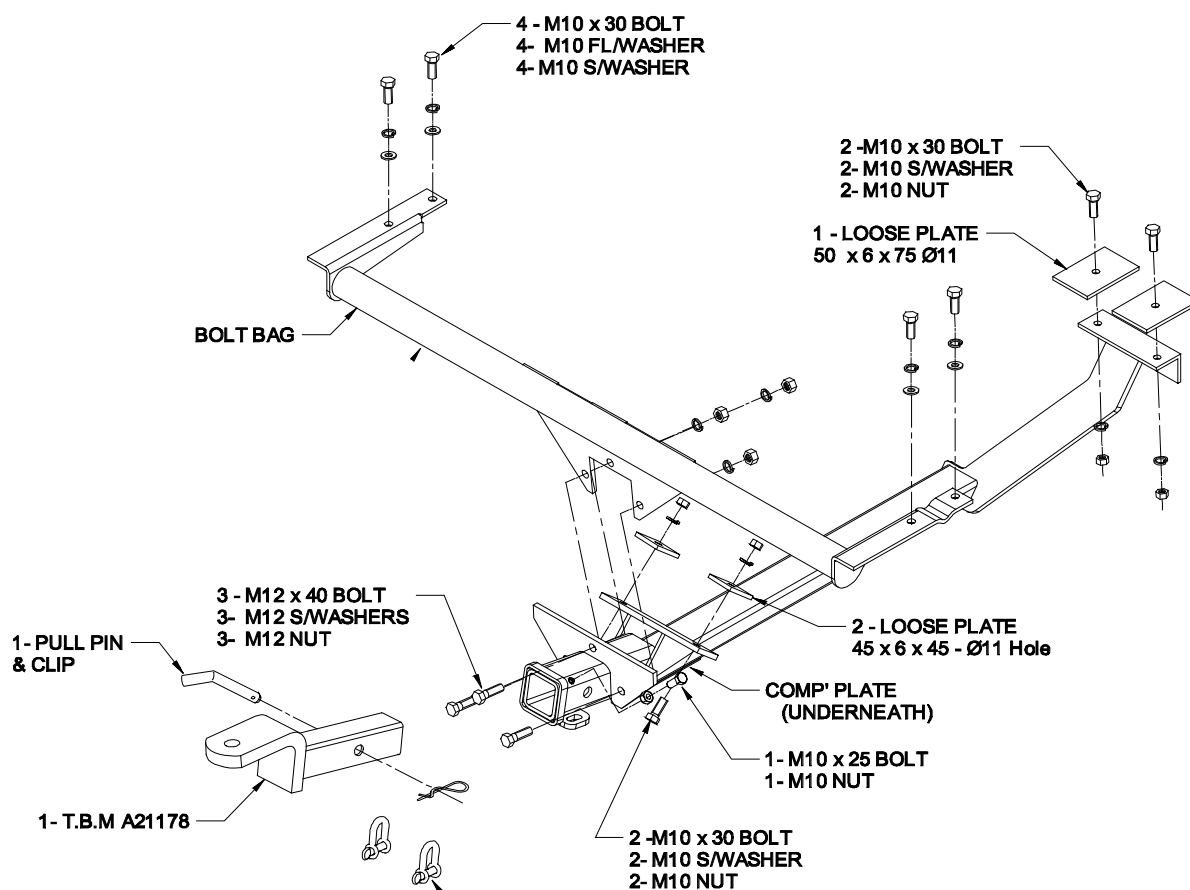
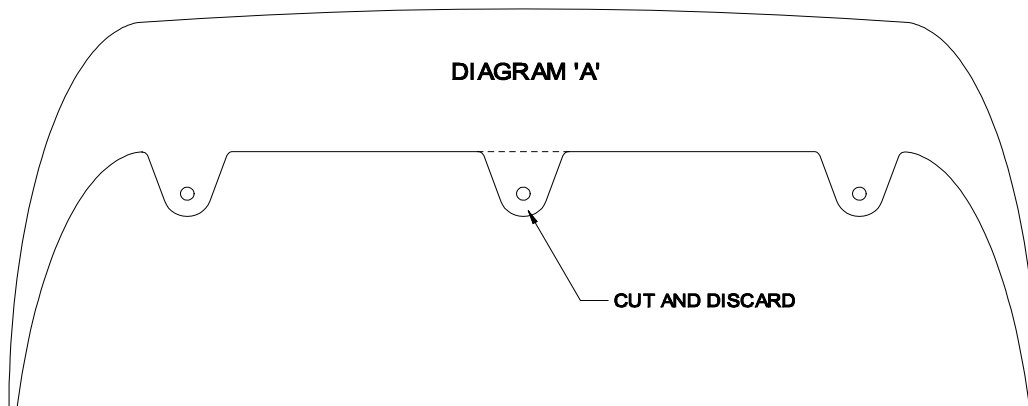


DIAGRAM 'A'





Towbar Fitting Instructions
To Suit **TOYOTA AVALON SEDAN**
Part Number **100365-WL**

Trailer Harness Installation Instructions

CAMRY / AVALON
(2008 and Onwards)
Part No: 100291-WL

Tail Harness Length Required: 1800mm
RPA Override Switch Part No: 04848 (If Fitted)

Trailer Harness Installation time: Approx. 30 Mins



Towbar Fitting Instructions
To Suit **TOYOTA AVALON SEDAN**
Part Number **100365-WL**

PLEASE ENSURE THAT INSTRUCTIONS ARE UNDERSTOOD PRIOR TO FITMENT

AVALON / CAMRY

1. Remove the luggage compartment centre trim, by removing the two trim clips.
2. Remove the LHS luggage compartment trim by removing the five trim clips.
3. Remove the Ø31mm grommet in the luggage compartment floor at LHS rear corner.

Warning: If vehicle is fitted with a moon roof, continue with step 4. For all other vehicles, skip to step 5.

4. Next to the Ø30mm roof drain pipe, drill a Ø31mm using a hole saw.
5. File any rough or sharp edges and spray on rust inhibitor.
6. Mount trailer socket to towbar mounting bracket using M4 fasteners (Not supplied).
7. Route the tail harness (tail length 1800) through the previously drilled out grommet hole.
8. Ensure the tail harness grommet is seated correctly and secured in place using cable ties (Not supplied)
9. Locate the vehicle 6 way female break out connector and connect trailer patch (100291-WL) then patch the 8-way female connector to 8-way male connector.
10. Test the trailer harness function using a light board or multimeter.
11. Secure all harness using cable ties (Not supplied).
12. Refit all removed parts and secure all fasteners, ensuring there are no squeaks and rattles.
13. Place fitting instructions in glove box after fitment.



FITTING INSTRUCTIONS

Silent Anti-Rattle Hitch Pin (PRO001)

• These fitting instructions are supplied to ensure understanding of how the HITCH PIN should be fitted and used correctly.

• Once installed, we recommend **ALL** instructions are kept and placed in the vehicle glove box.

NOTE: Routine maintenance and inspection of the towbar & HITCH PIN is required. Regularly inspect for wear and check the tightness of the Hitch Pin. Follow instructions below to retighten the nut when necessary.

***Do not tow with your vehicle if the R CLIP or the HITCH PIN is loose or missing. Replacement parts are available from your Pro Series Distributor.**

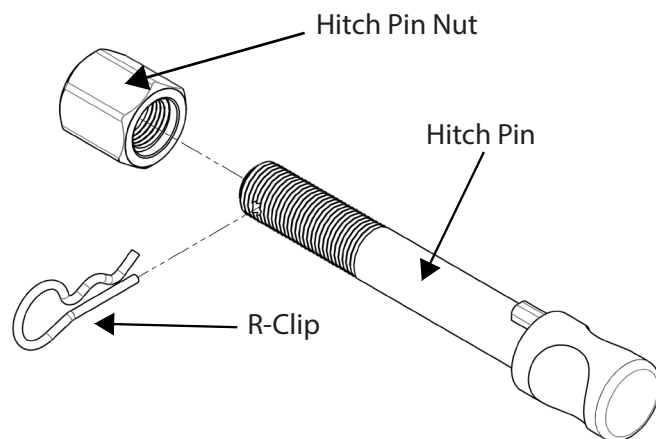


Fig 1. Silent Anti-Rattle Hitch Pin assembly

STEP 1

Insert Trailer Ball Mount (TBM) into towbar HITCHBOX, aligning hole in TBM SHANK with hole in HITCHBOX (Fig 2).

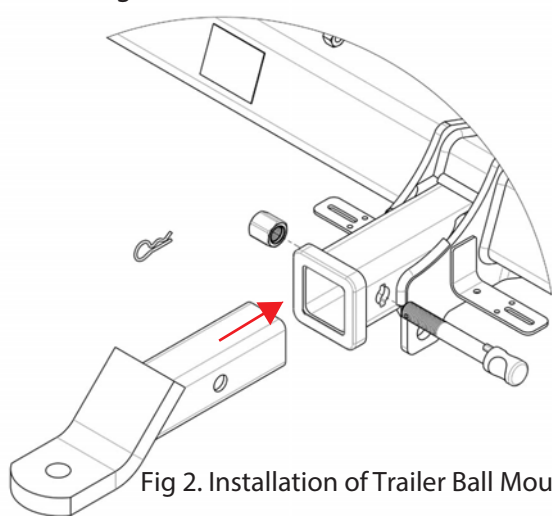


Fig 2. Installation of Trailer Ball Mount

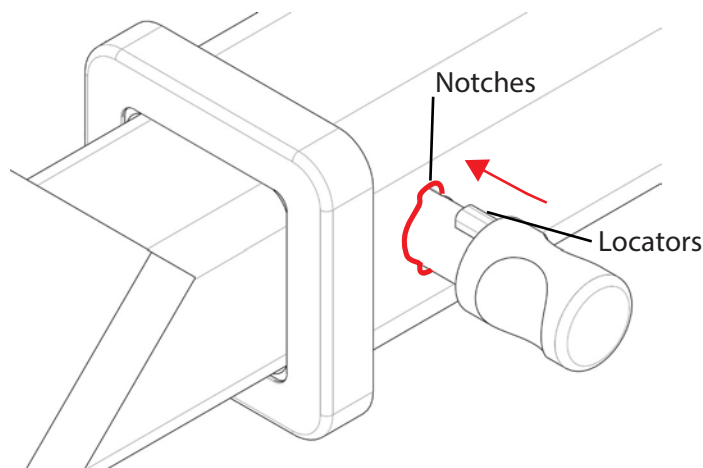


Fig 3. Silent Anti-Rattle Hitch Pin orientation

STEP 2

Insert HITCH PIN through hole in HITCHBOX and hole in TBM SHANK; ensure the LOCATORS are inserted into the NOTCHES in the HITCHBOX (Fig. 3).

STEP 3

Screw HITCH PIN NUT onto HITCH PIN ; tighten HITCH PIN NUT until finger tight, ensuring TBM is restrained from movement.

STEP 4

Tighten HITCH PIN NUT by turning nut a further 1/8th of a turn in the clockwise direction using a 24mm spanner (Fig. 4).

STEP 5

Install HITCH PIN R CLIP through the hole on the HITCH PIN (Fig. 1).

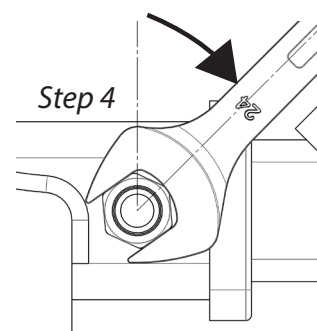


Fig 4. Tightening of Silent Anti-Rattle Hitch Pin Nut