



Towbar Fitting Instructions

To Suit **HONDA CIVIC 02-2006-ON, FITS VTi 40 4D Sdn; VTi-L 40 4D Sdn; Sport 40 4D Sdn**
Part Number HN59L

Rating 1200Kg

WARNING:

1. Do not, drill, cut, weld or otherwise modify the tow bar.
2. If you are using electric welding on a motor vehicle, **always** check that the vehicle is not equipped with electronic engine or instrument management equipment. Failure to do so could **destroy** any onboard computers. If in doubt, check with the vehicle's manufacturer.



CAUTION TWO PEOPLE ARE REQUIRED TO FIT THIS PRODUCT

**MAX TOWING CAPACITY 1200Kg
FOR AUTOMATIC 800KG**

- 1 Ensure all hardware items have been included.
- 2 Remove the Rear bumper bar as per the vehicle manufacturers owners repair manual. Refer to 2006 Civic 4dr shop manual, page 20-174.
- 3 Slide the exhaust off the rubber mount and slowly lower until in a stationary position. Also remove the muffler section of the exhaust pipe by undoing the two spring mounted bolts.
- 4 The heat shield needs to be removed and this can be done by undoing the four mounting bolts.
- 5 **This towbar is mounted to the vehicle by inserting side arms inside the chassis rail cavity. The fitment of this towbar requires holes to be cut in the rear beaver panel to allow access to the chassis rails.** Holes need to be cut on both driver & passenger sides as shown in the figure 1. File all sharp and uneven edges and burrs to ensure a neat and professional finish.
- 6 **Holes also need to be drilled in the passenger & driver side chassis rail.**
 - a) **DRIVER SIDE:** Using the existing 14mm holes in the driver side chassis rail, drill two 14mm holes as shown in figure 3, one at 30mm towards the rear of the existing hole and the other 270mm forward of the existing hole.
 - b) **PASSENGER SIDE:** Using the existing 14mm hole in the passenger side chassis rail, drill two 14mm holes as shown in figure 2, one at 45mm towards the rear of the existing hole and the other 255mm forward of the existing hole.
- 7 Offer Driver & passenger side arms to the vehicle and insert into the chassis rails such that the holes drilled on the chassis align with that of the spacers on the side arms.
NOTE: The side arms should be inserted into the chassis with the spigot nuts and the spacers facing either sides & once inserted should be then rotated so that the spigot nuts come on the top and the spacer plates sit at the bottom, on the chassis rails.
- 8 Fit the side arms to the vehicle using M12 bolts provided through the holes that have been drilled.
- 9 Maneuver tow bar to the vehicle by fitting it to the side arms as shown in the figure 1.
- 10 Fasten all hardware loosely as per diagram below then tighten all hardware to torque listing.
- 11 Drill holes through the Exhaust shield if deemed necessary to provide relief for the bolts heads that are used to fix the side arms of the tow bar.
- 12 Trim the bumper as shown in the figure 4.
- 13 For vehicles fitted with an RR under spoiler, use the dimensions given on the figure 5 to trim it.
- 14 Refit bumper in reverse of steps 2, 3 & 4.

NOTE: Hayman Reese recommends that you check your tow ball to ensure it complies with the Australian standard AS 4177.2.



Towbar Fitting Instructions

To Suit HONDA CIVIC 02-2006-ON, FITS VTi 40 4D Sdn; VTi-L 40 4D Sdn; Sport 40 4D Sdn

Part Number HN59L

Rating 1200Kg

RECOMMENDED ASSEMBLY TORQUE LISTING

Diameter Grade 8.8 Bolt

	Nm
M6	9.5
M8	21.7
M10	43.4
M12	77.3
M16	189.8

FOR TOWING PURPOSES ONLY

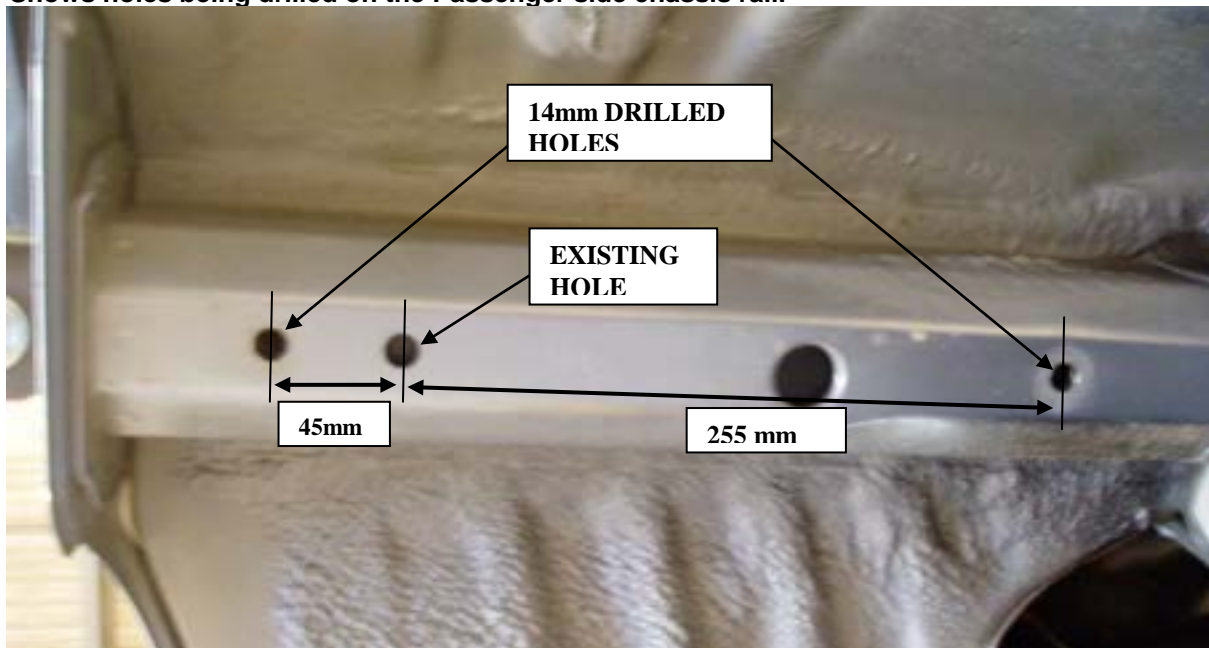
For towing capacity details please refer to vehicle owner's manual or to the manufacturer. Overloading can void your warranties.

Fig 1: Shows holes cut on rear panel, side arms inserted & towbar bolted on.



HOLES CUT ON THE REAR PANEL FOR ACCESS TO THE CHASSIS RAIL SHOWN.
NOTE: THE SIDE ARMS SHOULD INITIALLY BE INSERTED WITH THE FACE WITH NUTS POINTING SIDEWARDS, AND THEN ROTATED ONCE INSIDE THE CHASSIS SO THAT THE SIDE WITH NUTS COME ON TOP.

Fig 2: Shows holes being drilled on the Passenger side chassis rail.



Towbar Fitting Instructions

To Suit HONDA CIVIC 02-2006-ON, FITS VTi 40 4D Sdn; VTi-L 40 4D Sdn; Sport 40 4D Sdn
Part Number HN59L
Rating 1200Kg

Fig 3: Shows holes being drilled on the Driver side chassis rail.

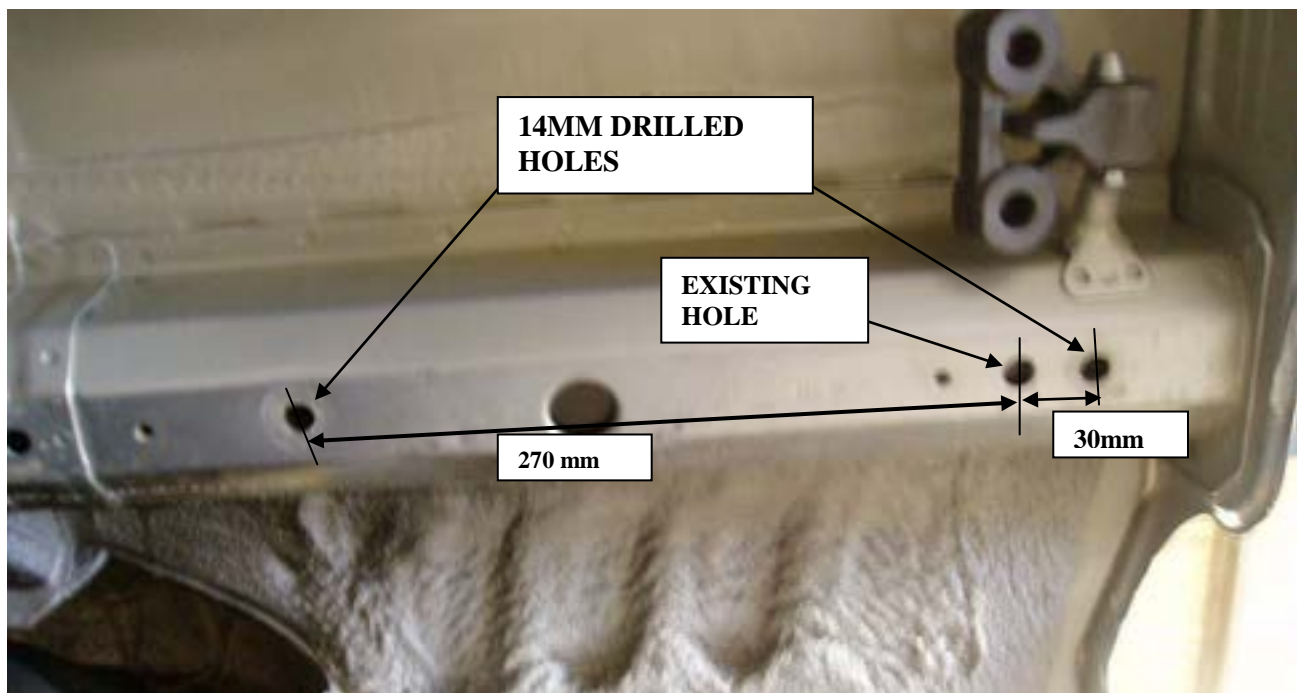
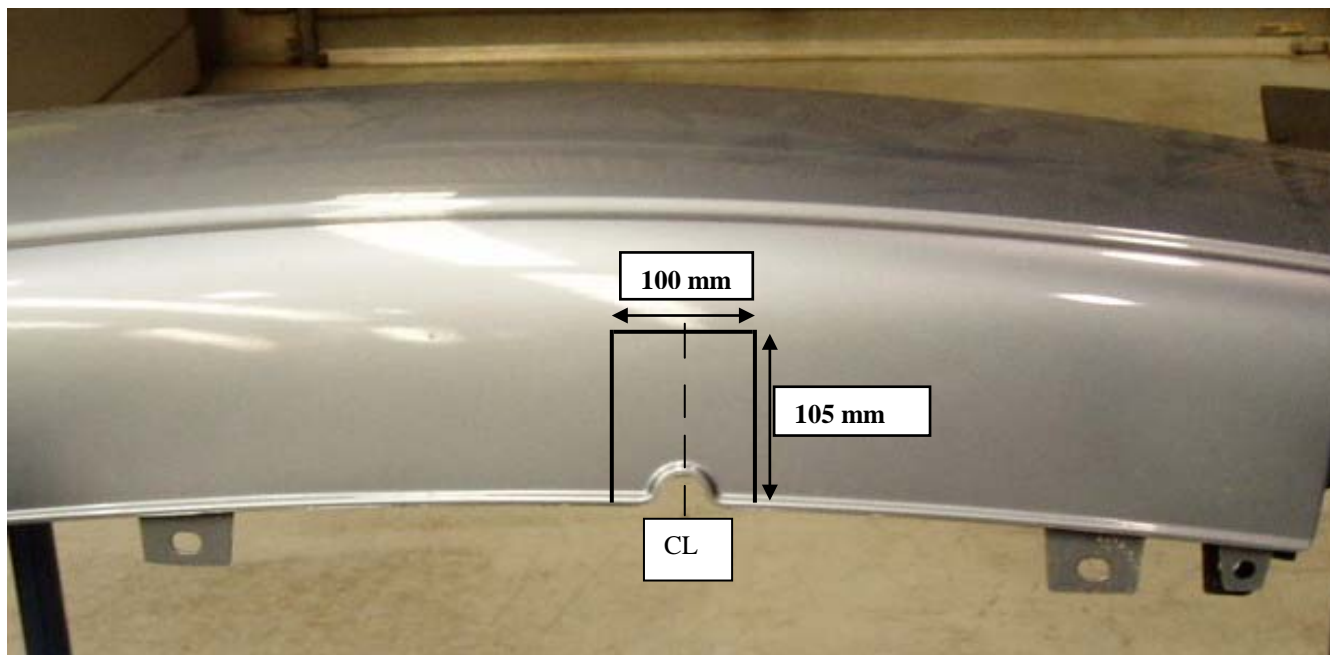


Fig 4: Bumper cut-out shown.





Towbar Fitting Instructions

To Suit HONDA CIVIC 02-2006-ON, FITS VTi 40 4D Sdn; VTi-L 40 4D Sdn; Sport 40 4D Sdn
Part Number HN59L

Rating 1200Kg

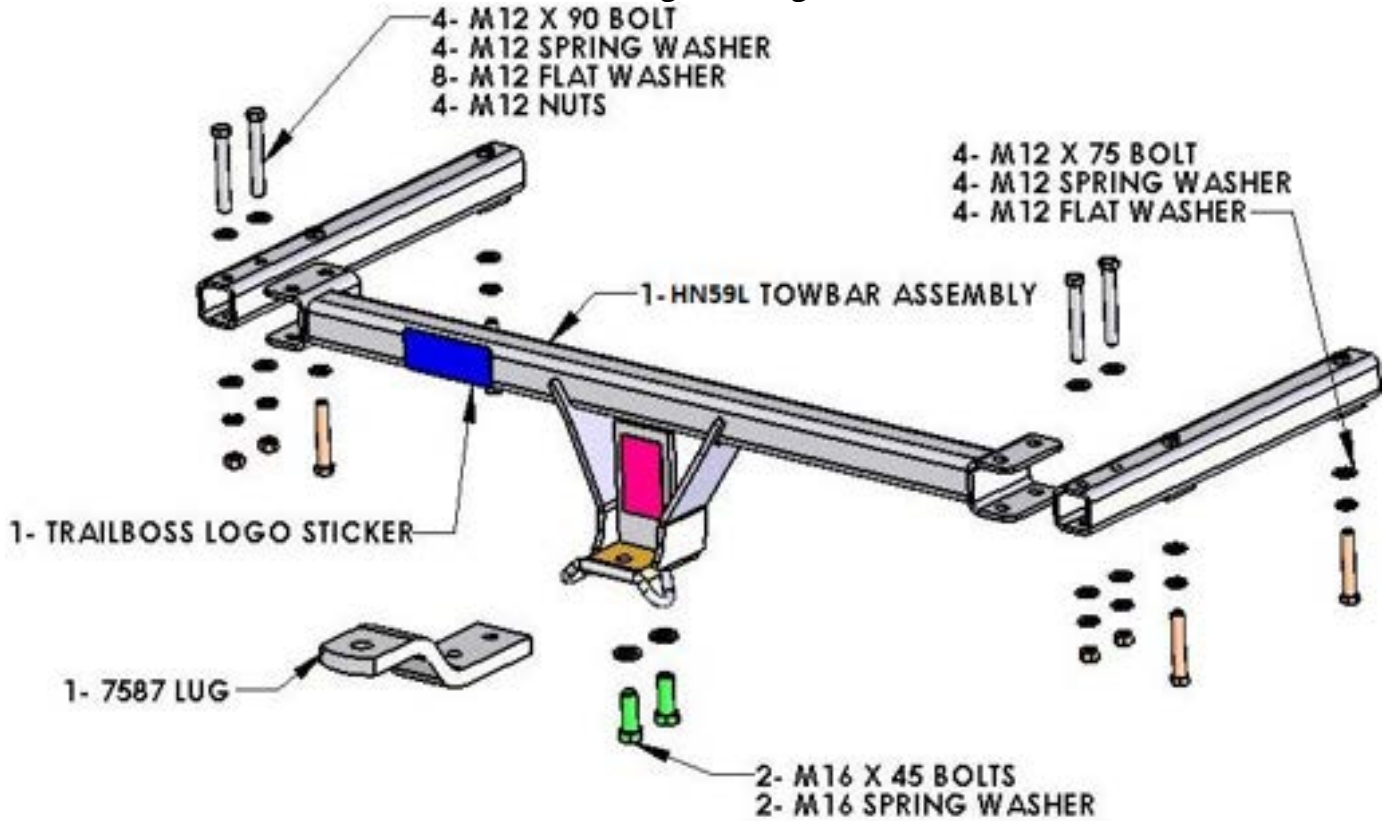
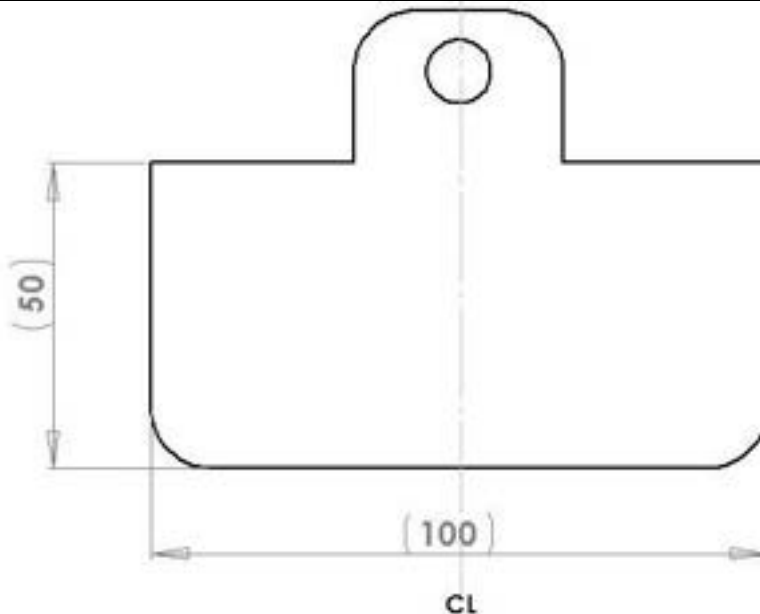


Fig 5: Shows the Dimensions for trimming the spoiler, for vehicles fitted with an RR under spoiler.



PLEASE NOTE: It is advised to remove lug from receiver box when not actually towing so as to produce a clear view of the vehicles registration plate if obscured, and to also provide increased departure angle.



Wiring Loom Fitting Instructions
To Suit Honda FD Civic Sedan
Part Number 100274-WL

Wiring Loom Installation Instructions

Honda FD Civic Sedan
Part No: 100274-WL

Tail Harness Length Required: 1800mm
RPA Override Switch Part No: 04848

Wiring Loom Installation Time: Approx 45 Mins



Wiring Loom Fitting Instructions
To Suit Honda FD Civic Sedan
Part Number 100274-WL

1. In the luggage compartment, remove the floor cover carpet.
2. Remove the centre tool tray and remove the two outer storage trays.
3. Remove the rear trim.
4. Remove the LHS luggage compartment trim by first releasing the three scrivets.
5. Remove the RHS luggage compartment trim by first releasing the three scrivets.
6. Locate and remove the LHS luggage compartment grommet, as shown below.



7. Drill out the grommet hole to Ø31mm.
8. File any rough or sharp edges and spray on rust inhibitor.
9. Locate and disconnect the LHS tail light 3-way connectors.
10. Patch the trailer harness mating connectors in between the LHS tail light assembly and the LHS tail light 3-way and 4-way connectors.



**Wiring Loom Fitting Instructions
To Suit Honda FD Civic Sedan
Part Number 100274-WL**

11. In the upper LHS of the luggage compartment, locate the vehicle 'BROWN' reverse signal wire.
12. Following the table below, connect the ezy tap to the vehicle 'BROWN' reverse signal wire.
13. Connect the Trailer Harness reverse terminal to the ezy tap.

Function	Trailer Patch	Vehicle Connector
REVERSE	BLACK	BROWN

14. Route the Trailer Harness (P/No: 100274-WL) across the rear of the luggage compartment and towards the RHS tail light connectors.
15. Locate and disconnect the RHS tail light 3-way connector.
16. Patch the trailer harness connector 3-way mating connectors in between the RHS tail light assembly and the RHS tail light 3-way connector.
17. From the outside of the vehicle, mount the trailer socket to the towbar mounting bracket using M4 fasteners (not supplied).
18. Route the Tail Harness (tail length 1800mm) across the towbar towards the LHS of the vehicle and up through the previously drilled out hole.
19. Ensure the Tail Harness grommet is seated correctly and secure in place using a cable tie (not supplied).
20. Connect the Tail Harness 8-way connector to the Trailer Harness mating 8-way connector.
21. Test the Trailer socket using a light board or multi-meter.
22. Secure all harnesses using cables ties (not supplied).
23. Re-fit all removed parts and secure all fasteners, ensuring there are no squeaks or rattles.
24. Place the instructions in the glove box after fitment.