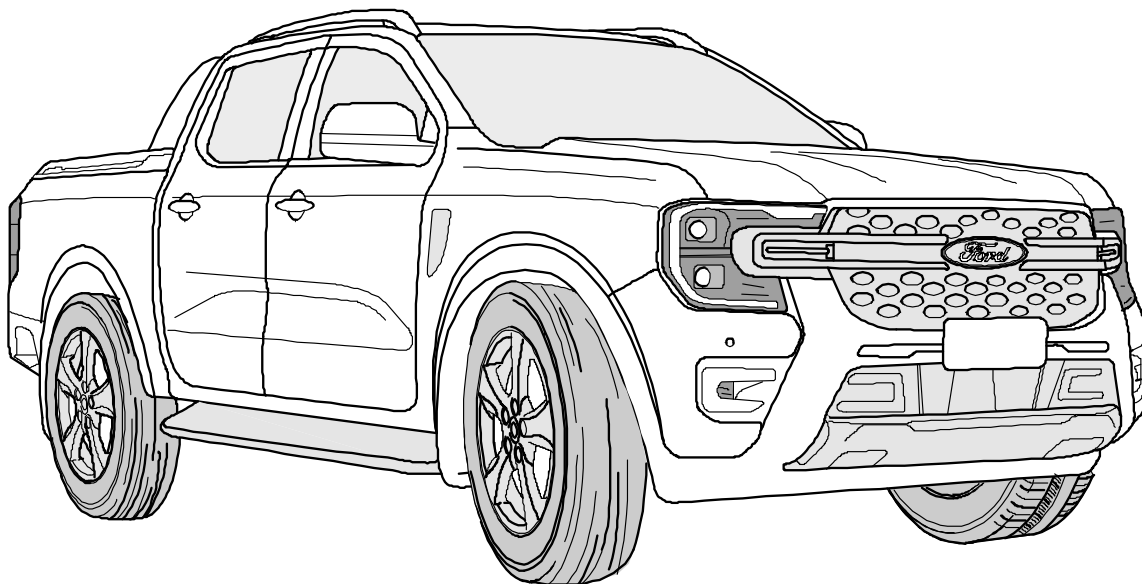




ERICH JAEGER



750173

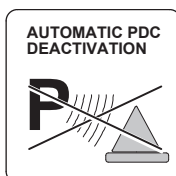
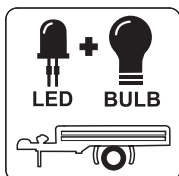
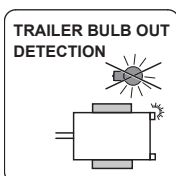
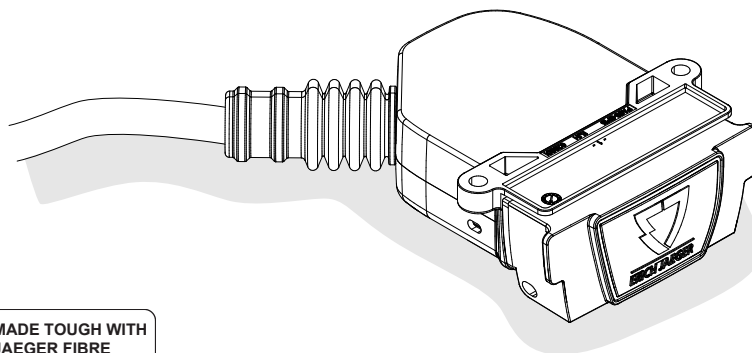
FORD Ranger (Base Models)

02/25 >>

(For vehicles without factory towing module fitted)



SCAN FOR
LATEST
INSTRUCTIONS



Reference:

The following information must be reviewed before beginning the assembly:

The installation instructions are to be thoroughly read.

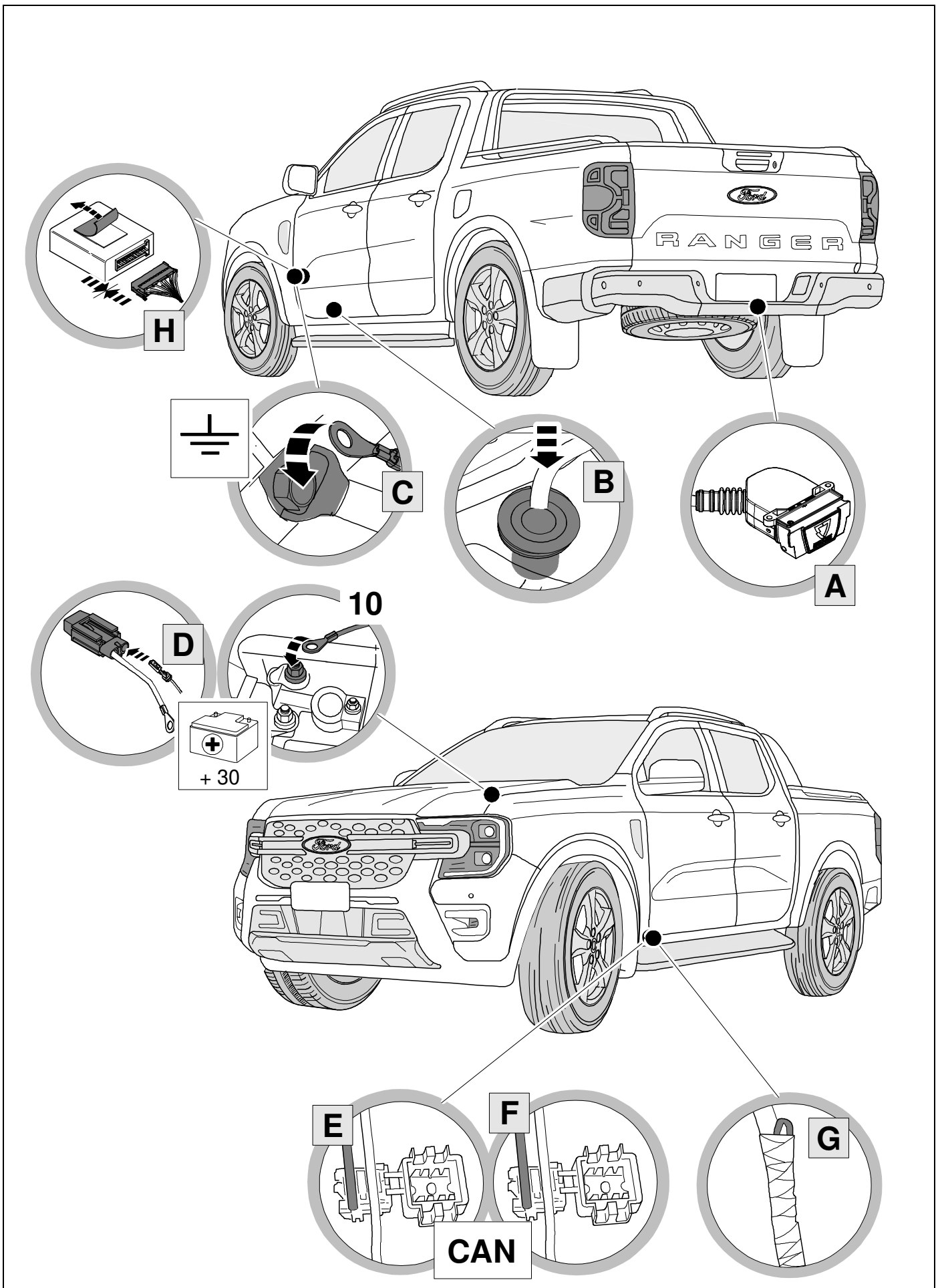
The installation should be carried out by qualified personnel with the relevant technical knowledge.

The vehicle manufacturers' current technical notices and information on retrofitting must be followed.

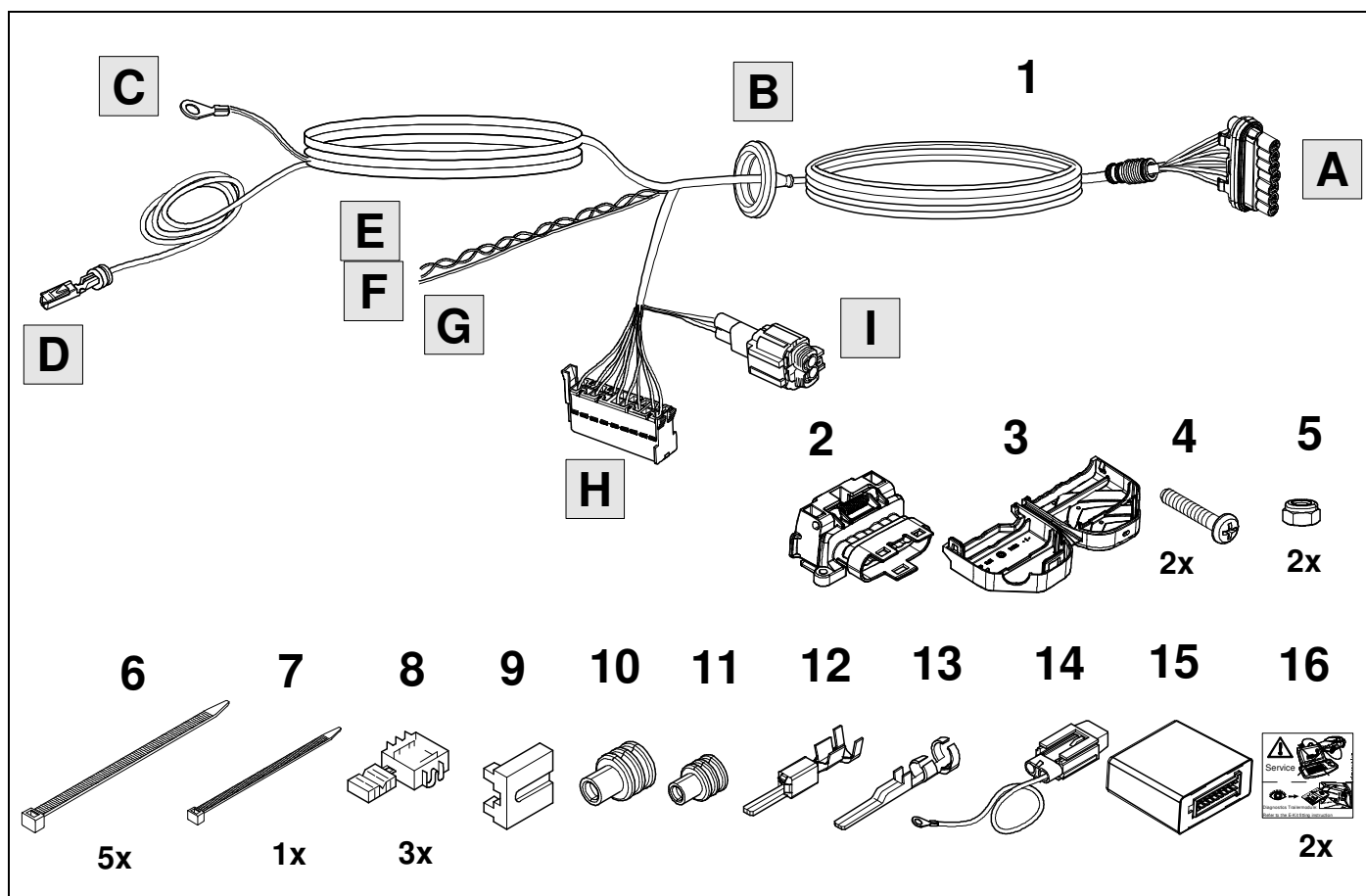
The removal and replacement instructions found in the current repair manuals must be followed.

It must be ensured that the vehicle is technically suitable for the installation of a trailer hitch.

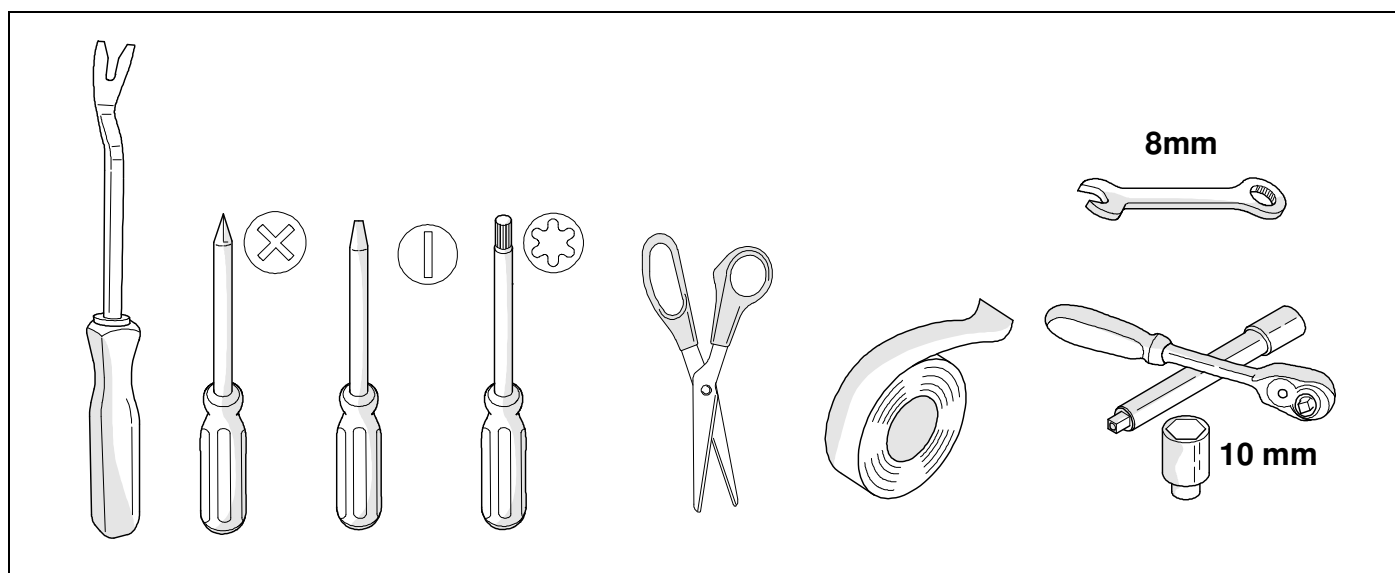
OVERVIEW

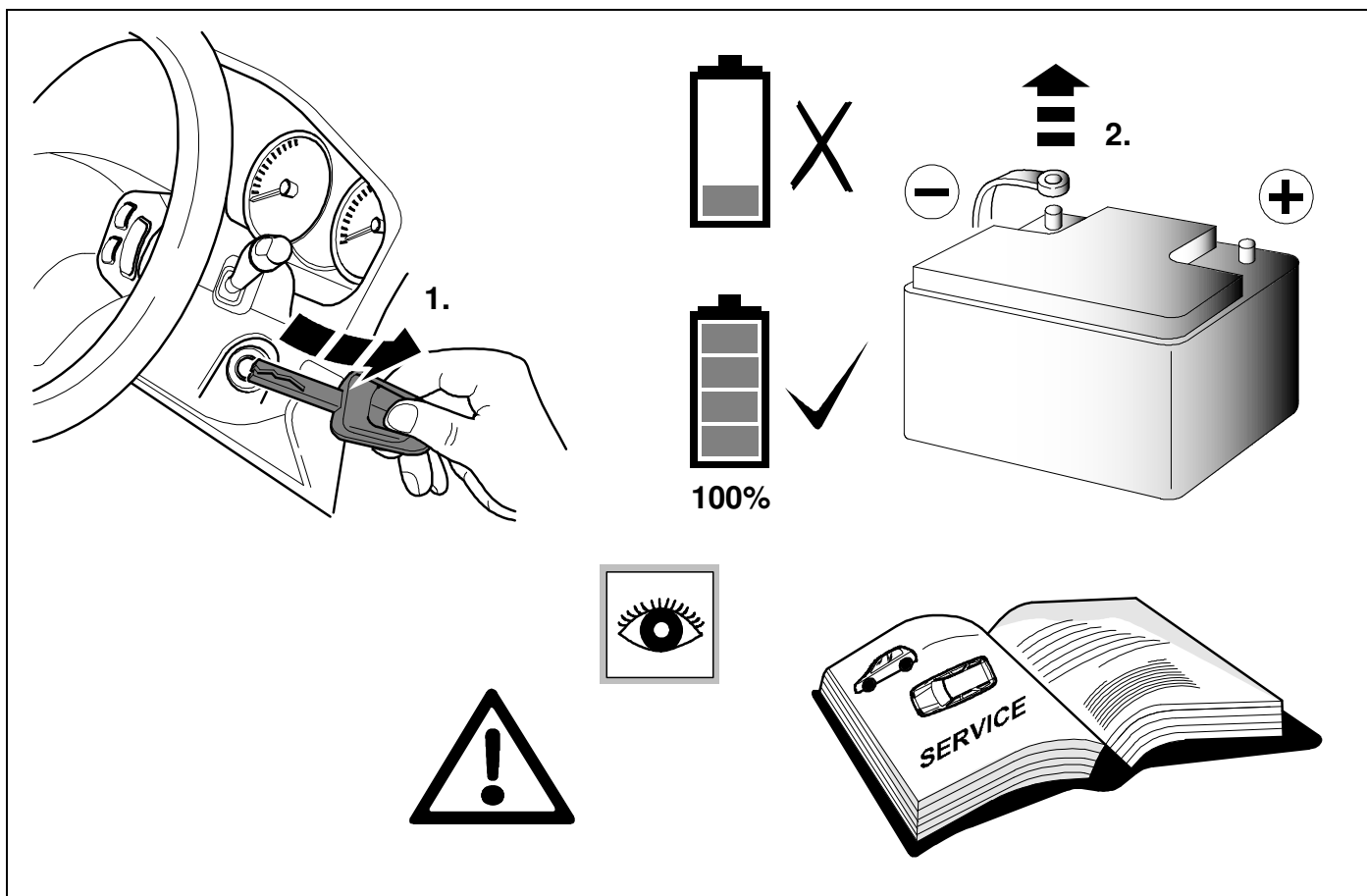


KIT

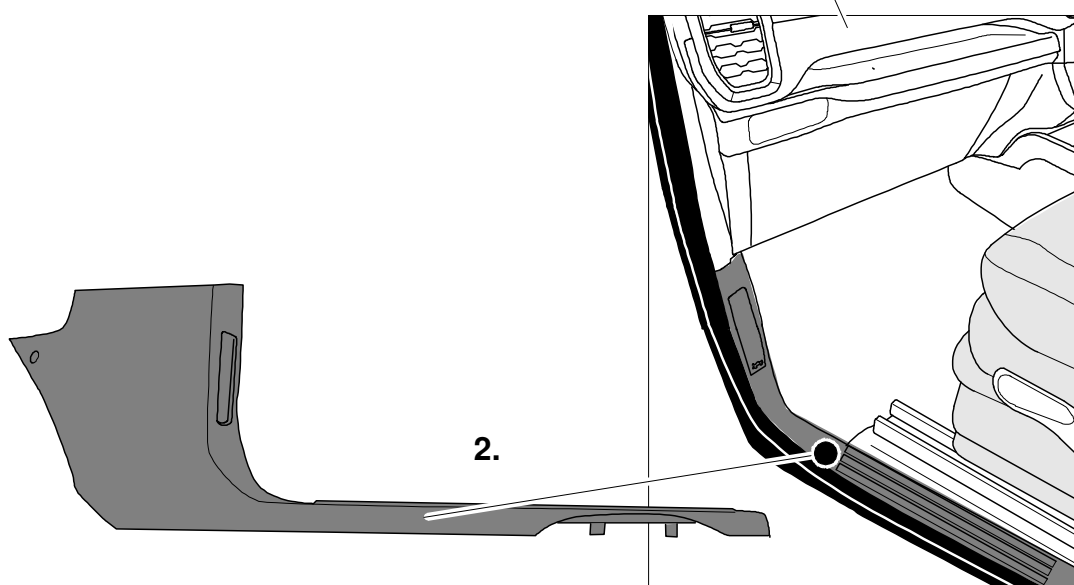
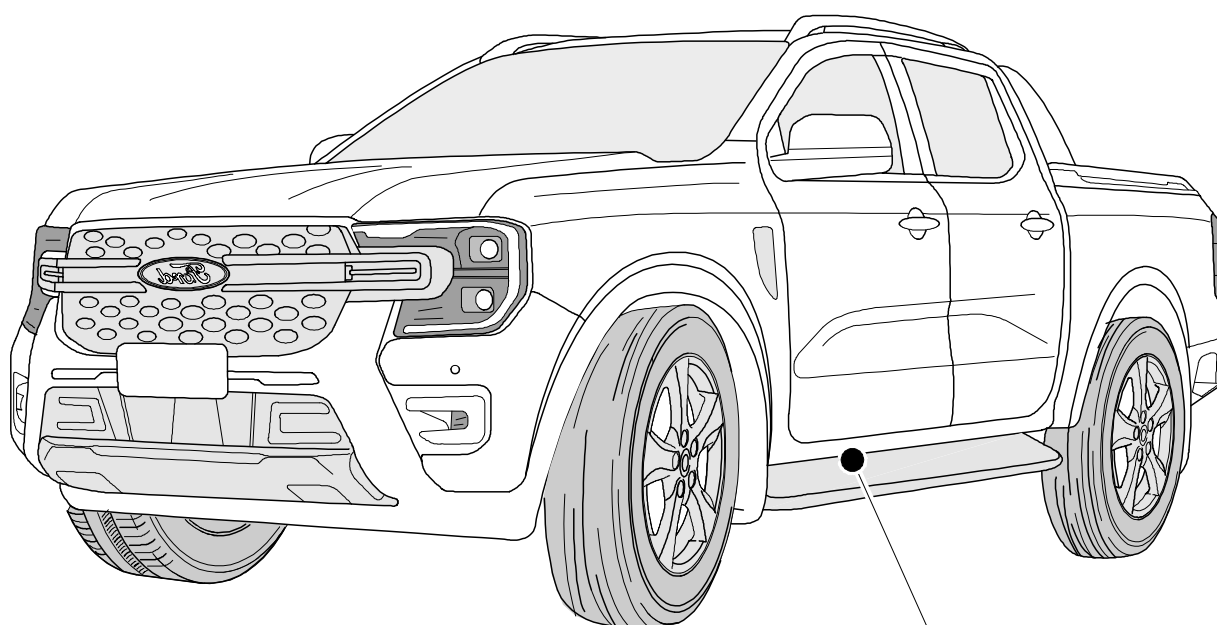
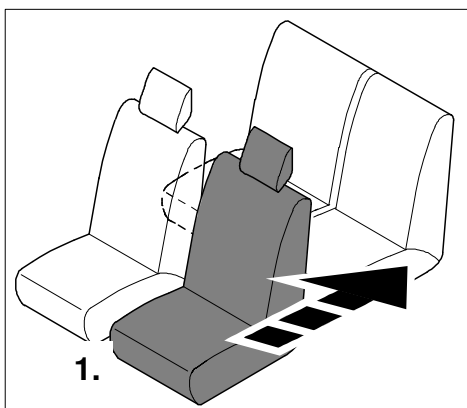


TOOLS

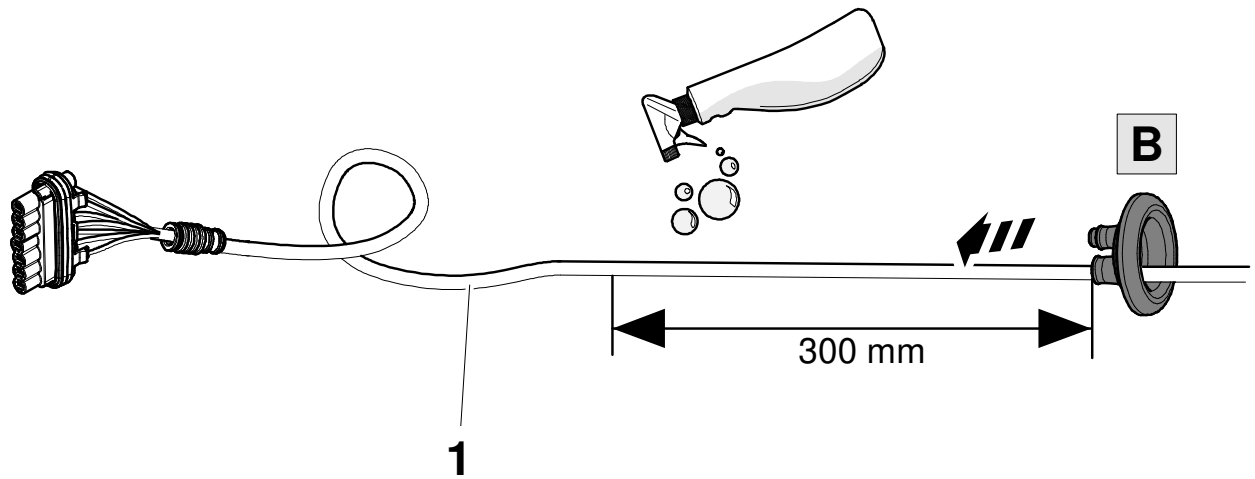




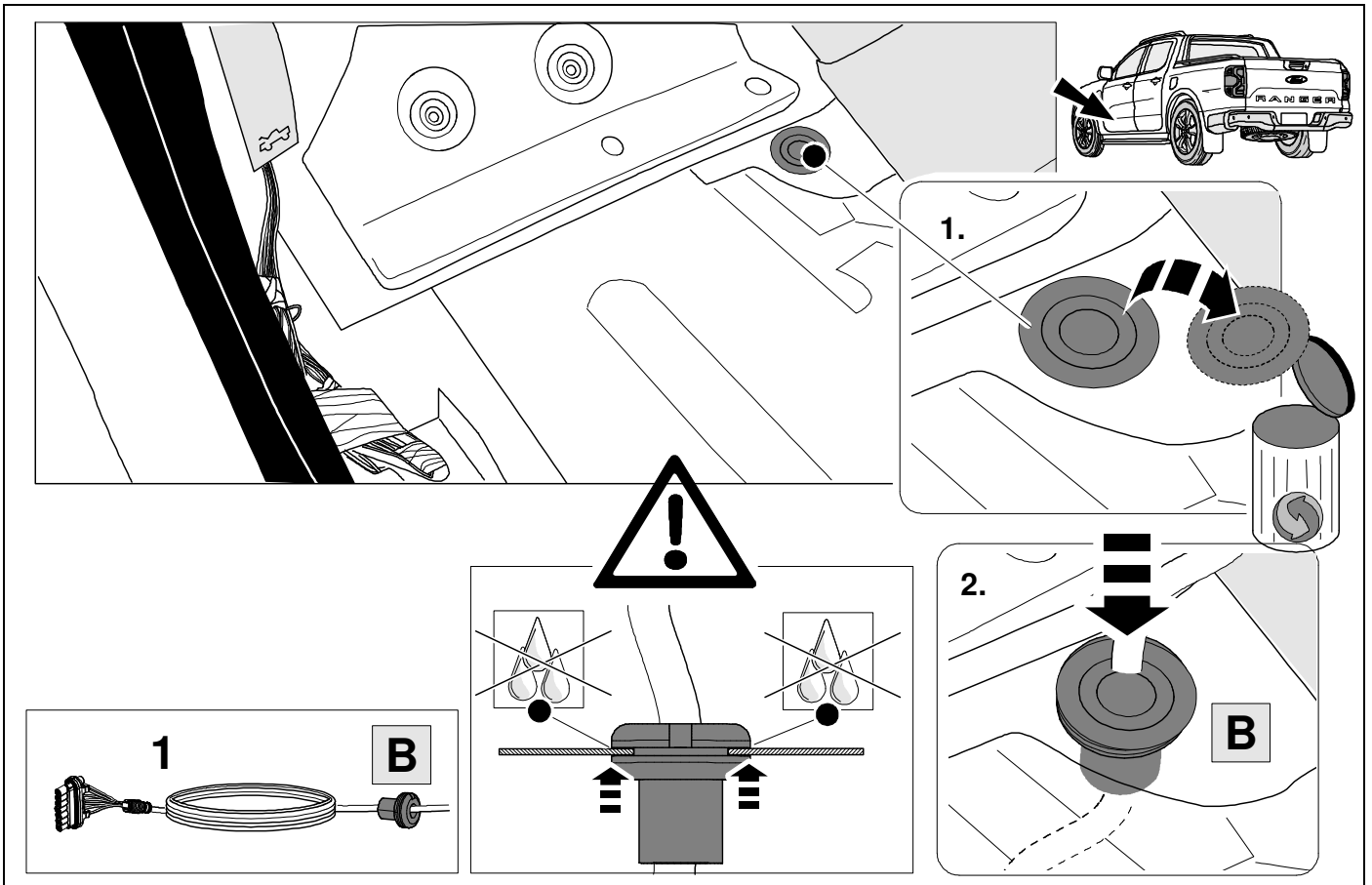
2 REMOVE

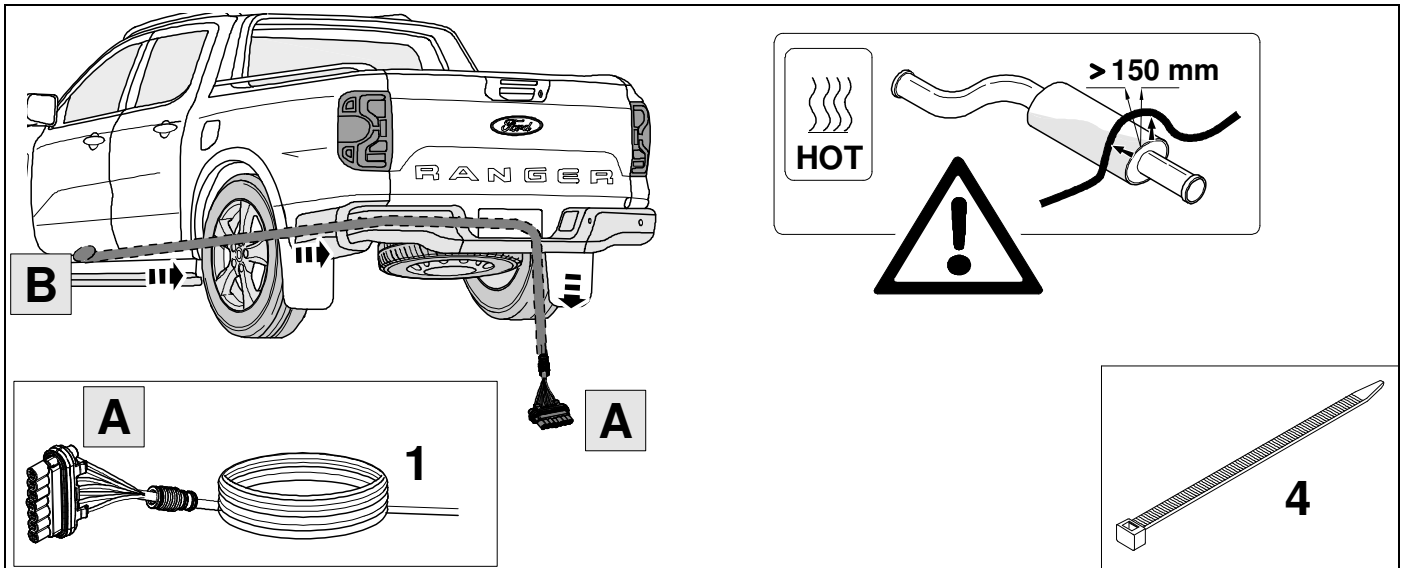


3



4



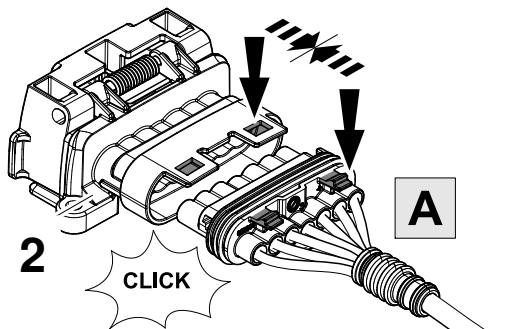


6

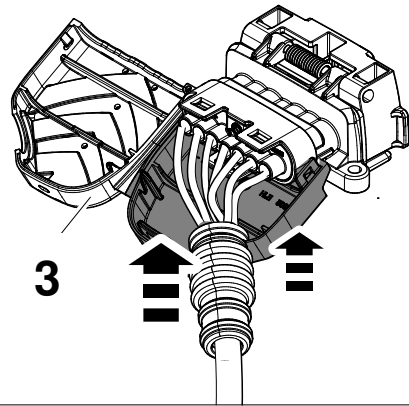


8

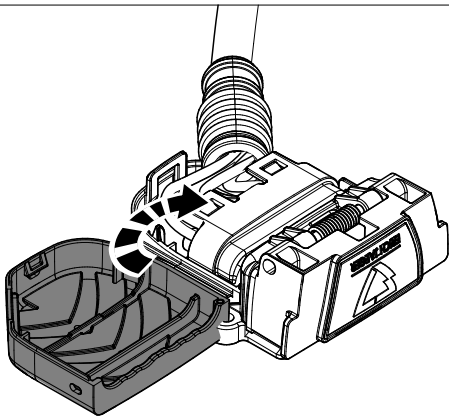
1.



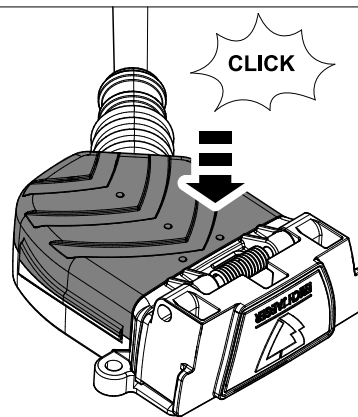
2.



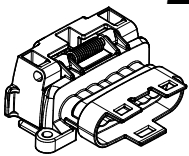
3.



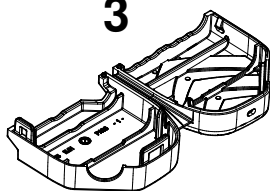
4.



2



3

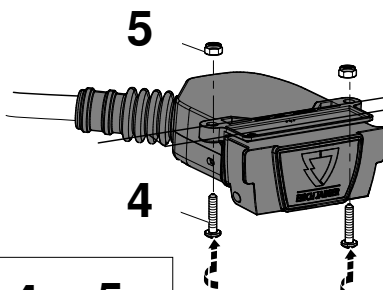


7



5

4

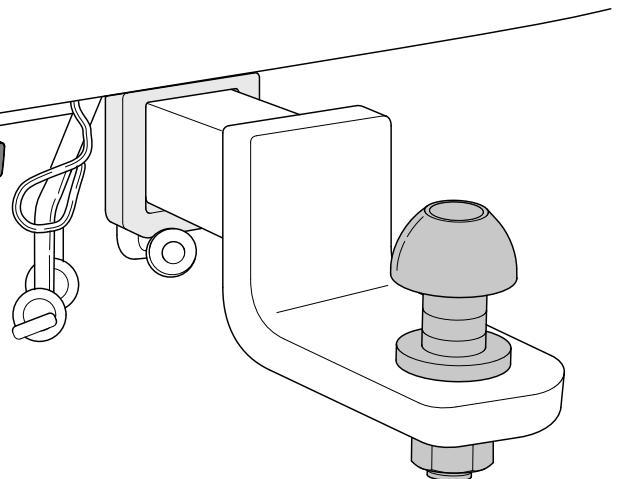
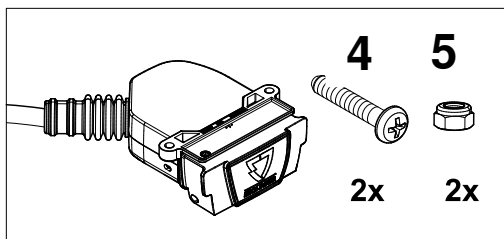


4

5

2x

2x



8



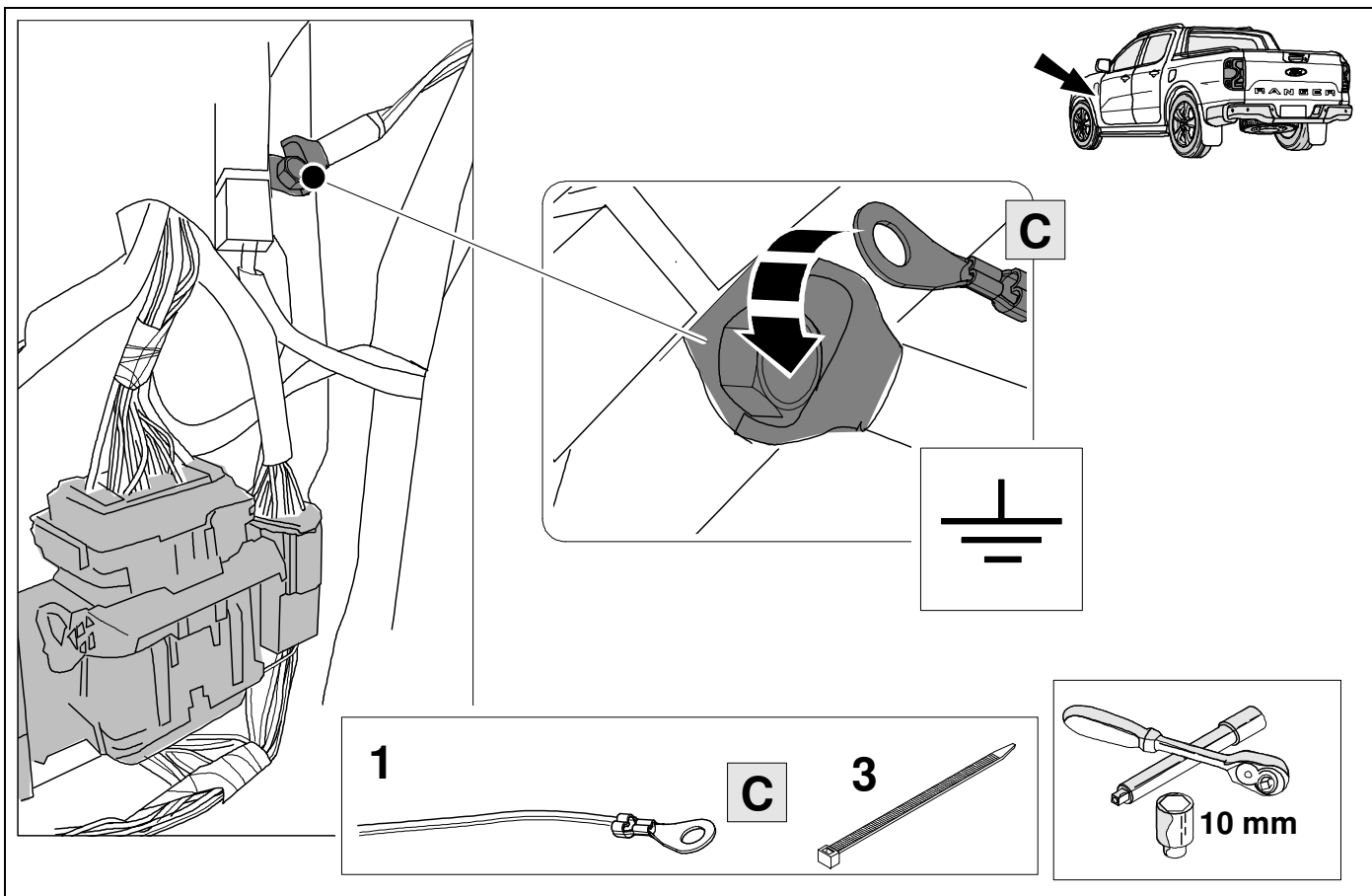
9

| | | |
|---|----|---|
| 1 | ye |  |
| 2 | bk |  |
| 3 | wh |  |
| 4 | gn |  |
| 5 | bu |  |
| 6 | rd |  |
| 7 | bn |  |

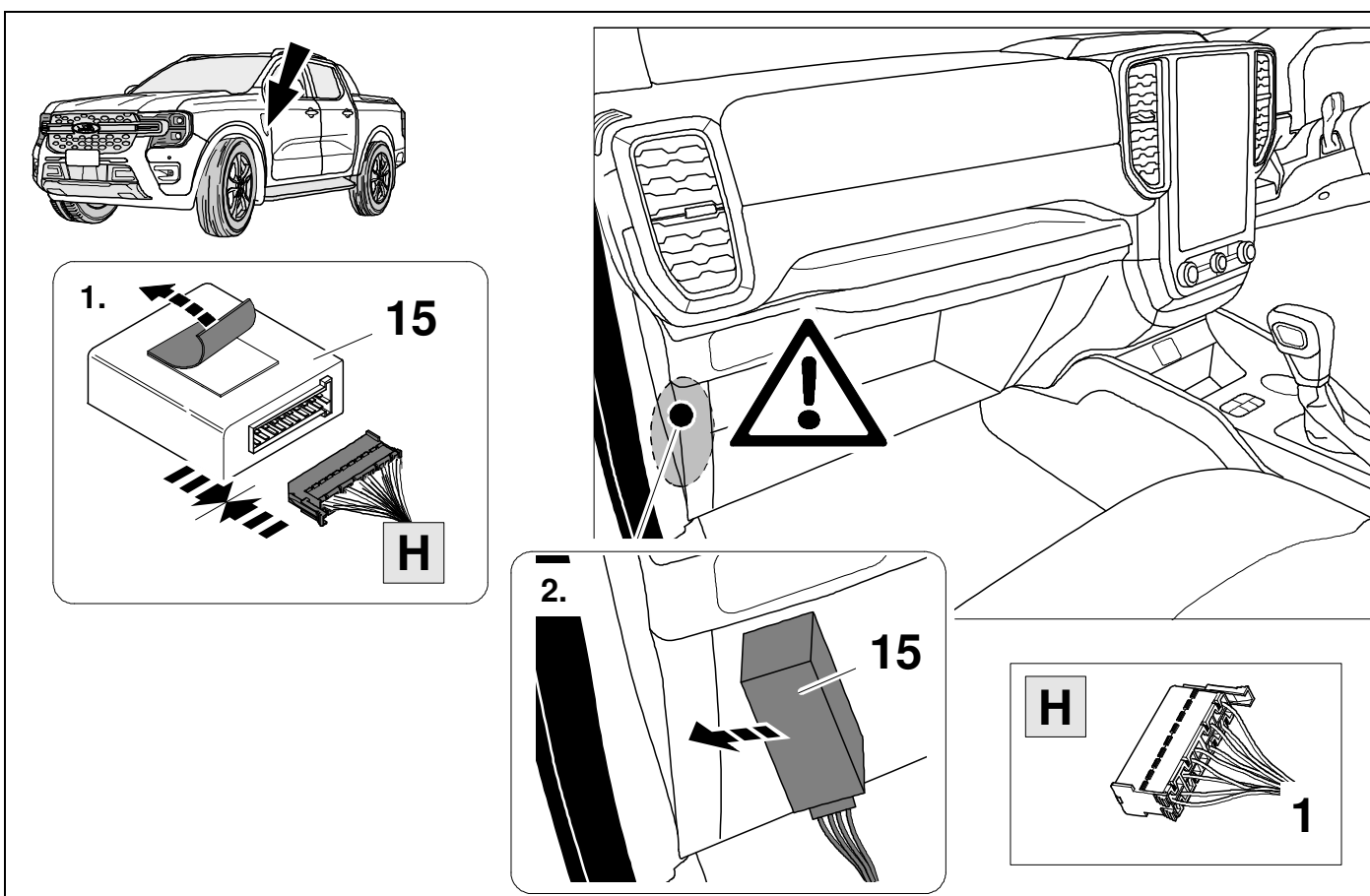
| | | | | | | | | | | | |
|---|----|----|----|----|----|----|----|----|----|----|----|
| 9 | bk | wh | gy | gn | rd | bu | ye | bn | pu | or | no |
|---|----|----|----|----|----|----|----|----|----|----|----|

| | | | | | | | | | | | |
|---|-------|-------|------|-------|-----|------|--------|-------|--------|--------|-----------------|
|  | black | white | grey | green | red | blue | yellow | brown | purple | orange | not occupied |
|---|-------|-------|------|-------|-----|------|--------|-------|--------|--------|-----------------|

10



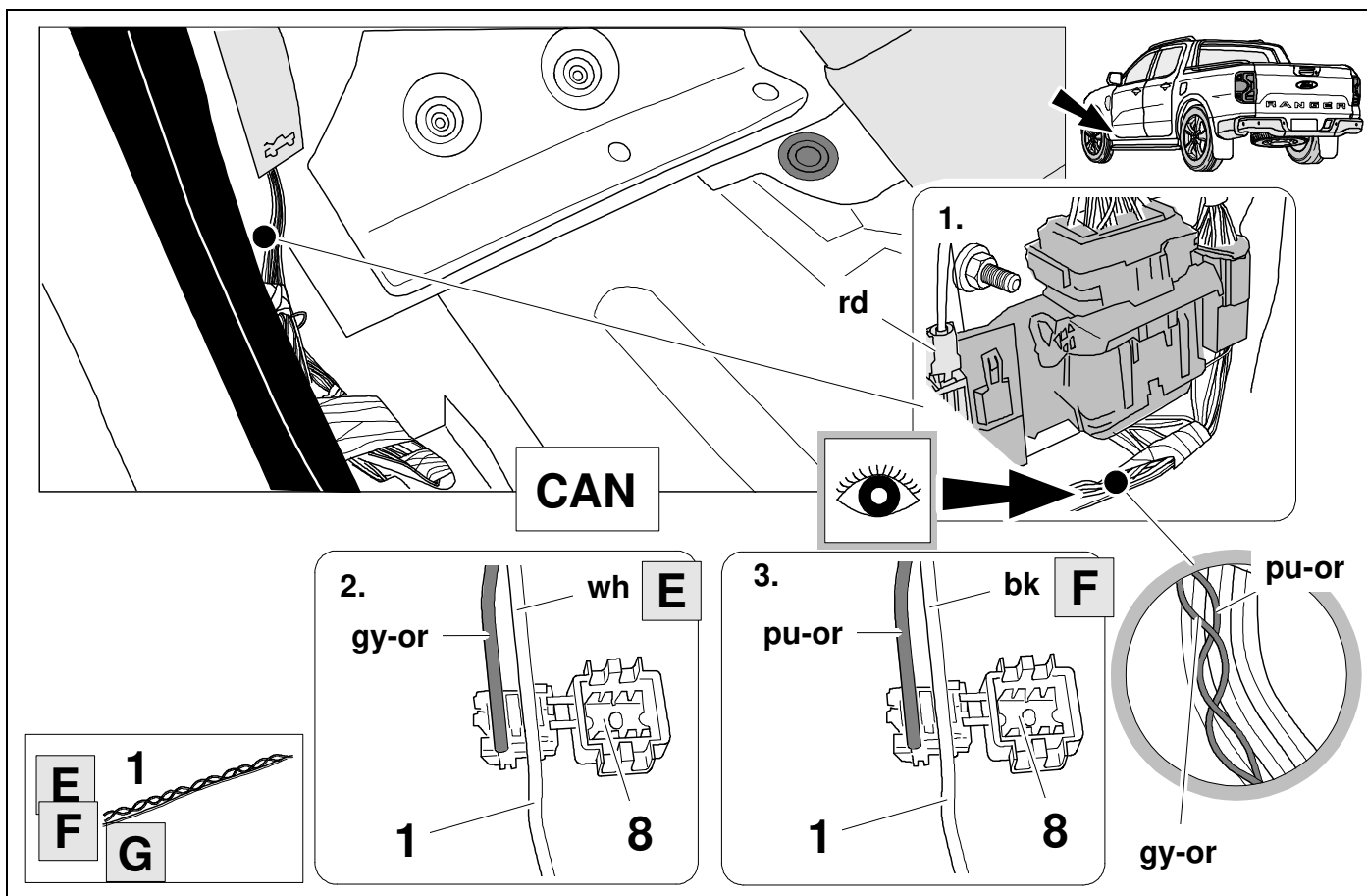
11



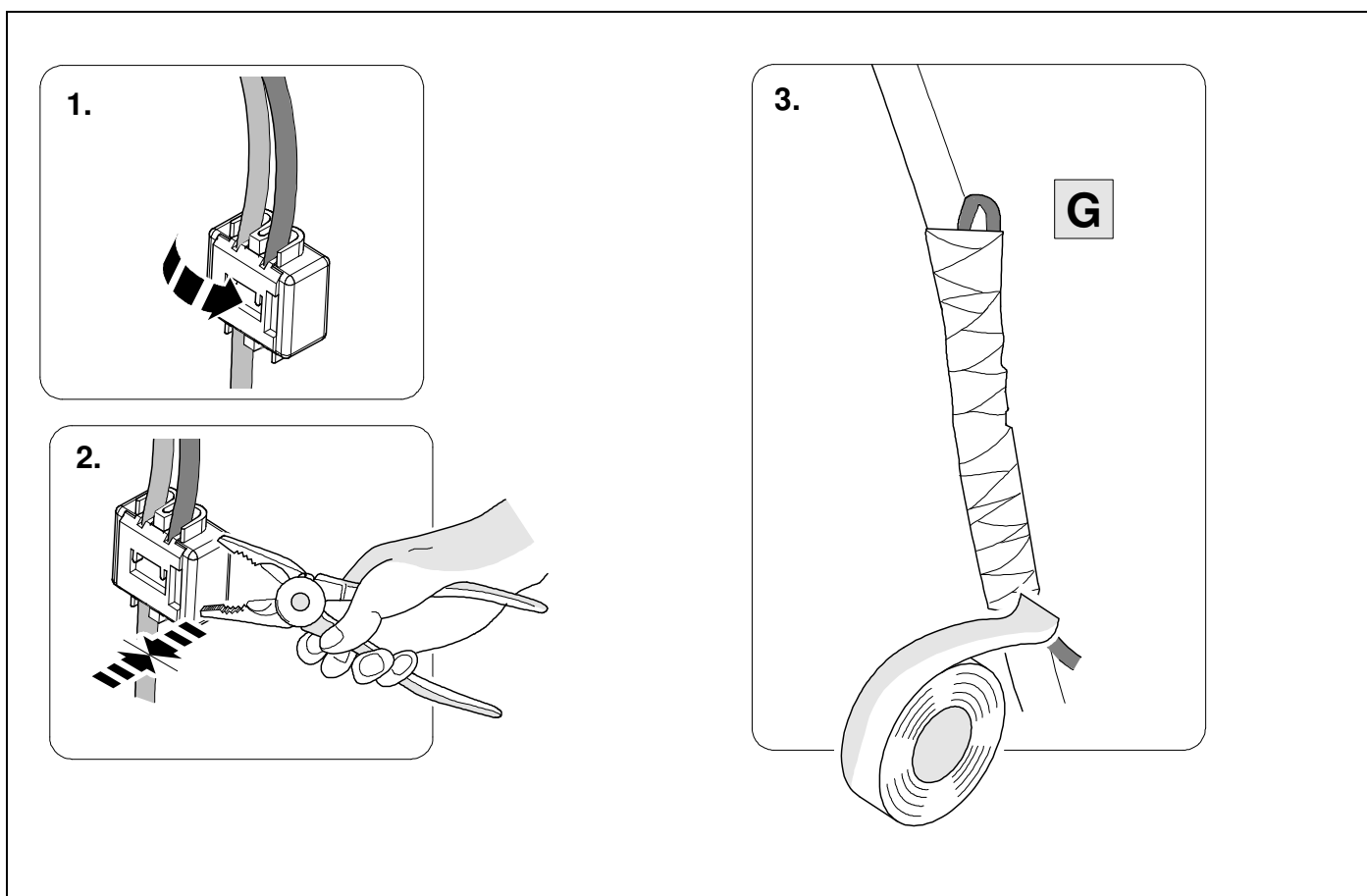
12



9



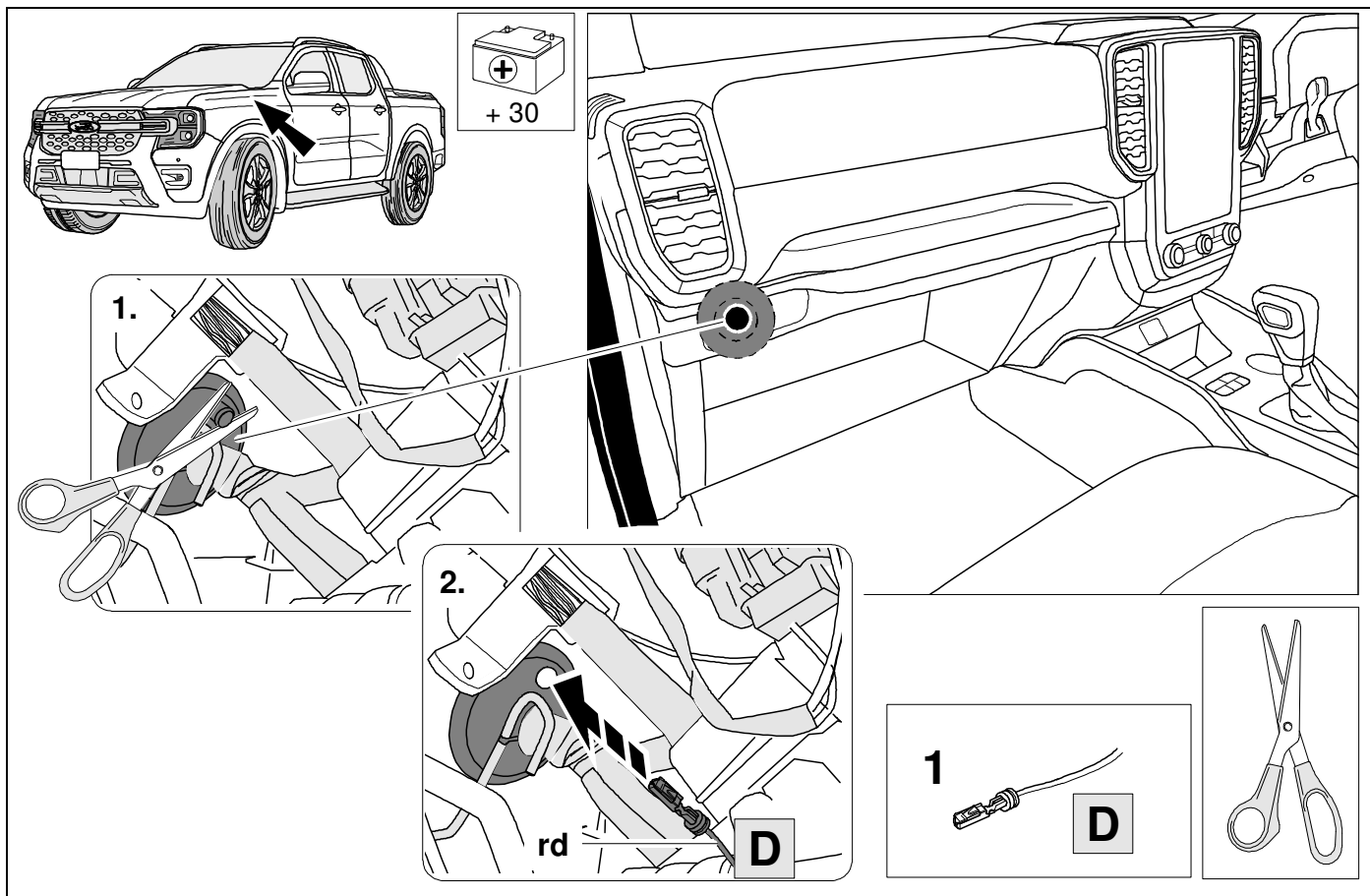
13



14



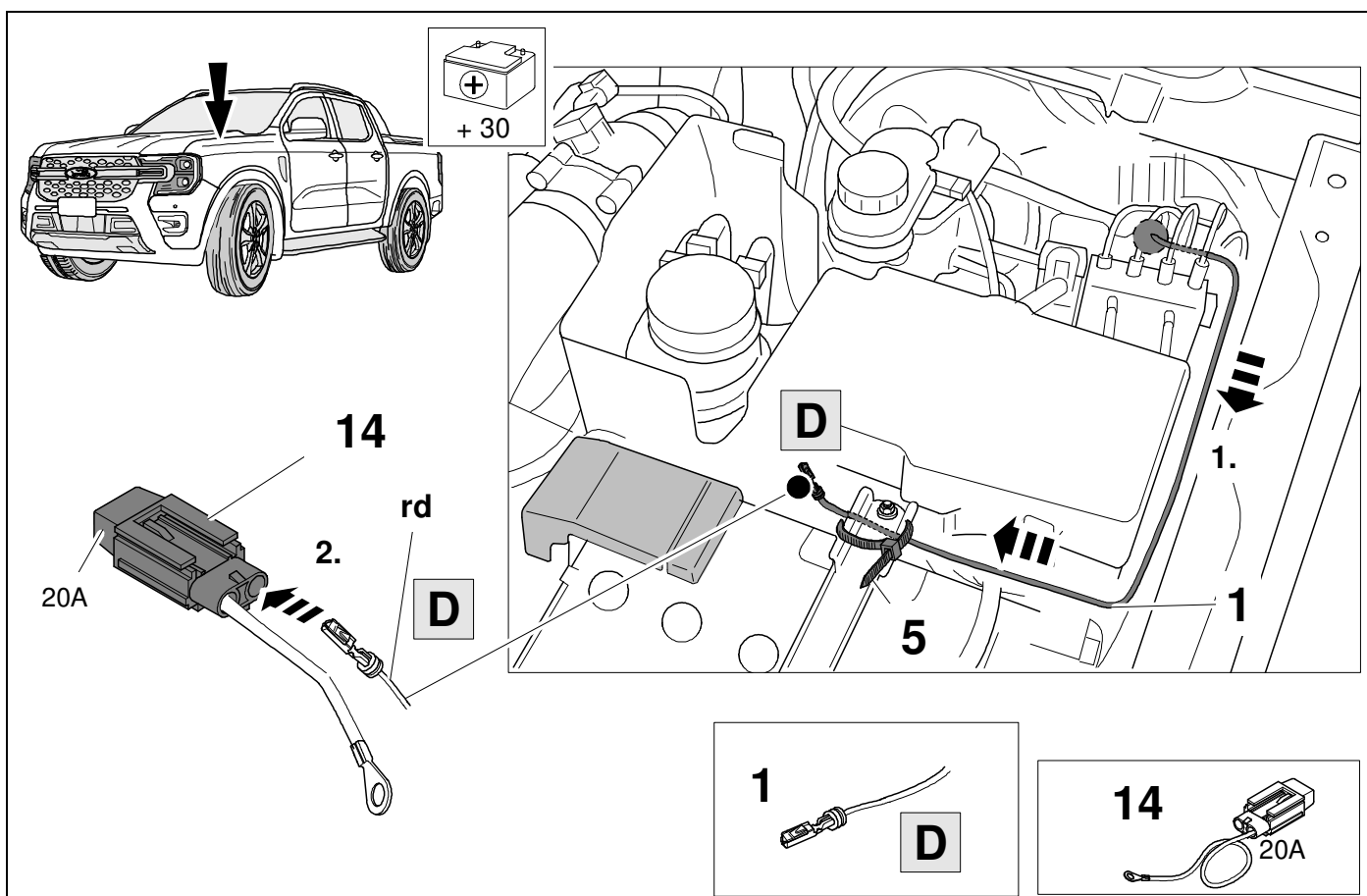
9

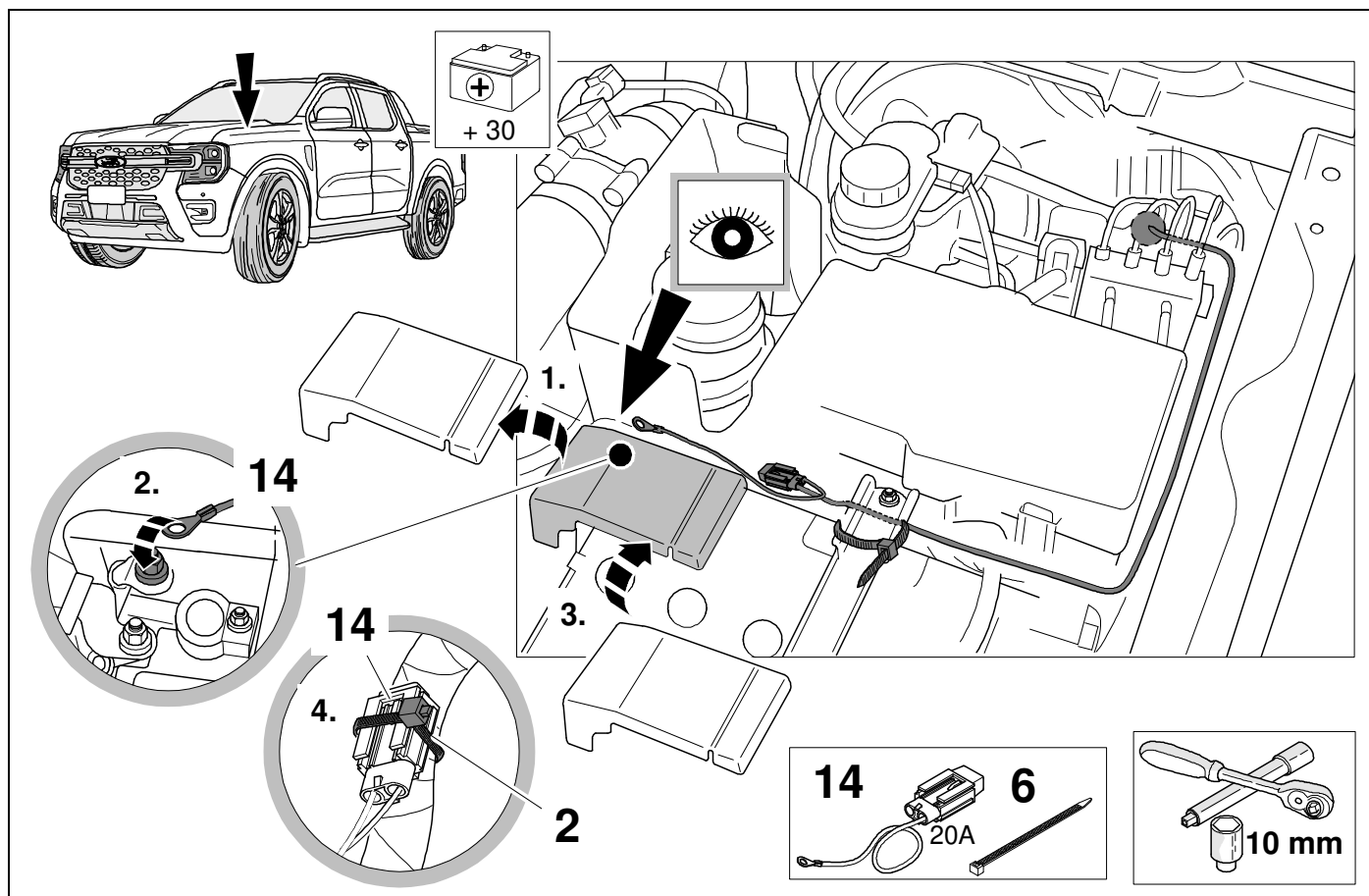


15



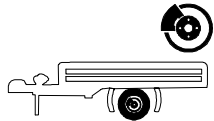
9







**BRAKE
CONTROLLER
PREPARED**

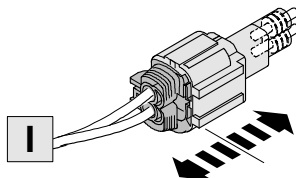


OPTIONAL

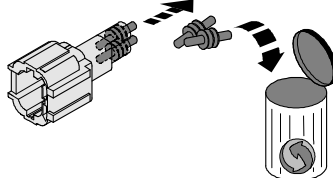


Trailer Brake Preparation

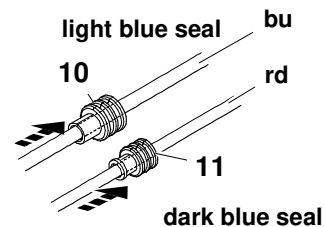
1.



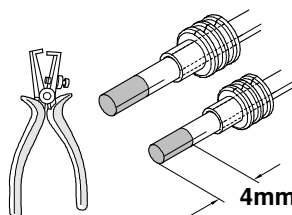
2.



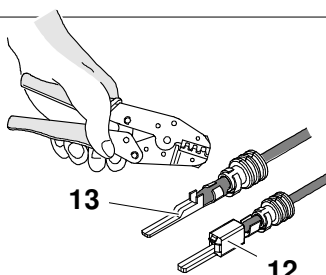
3.



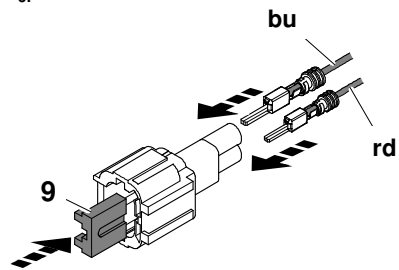
4.



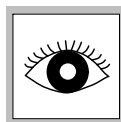
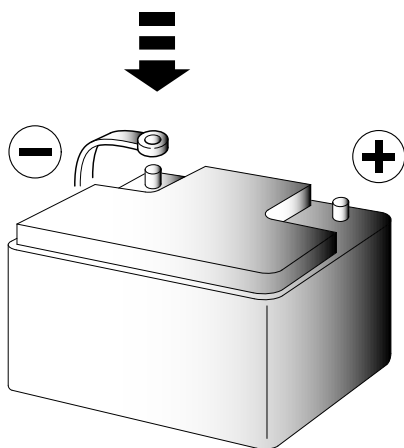
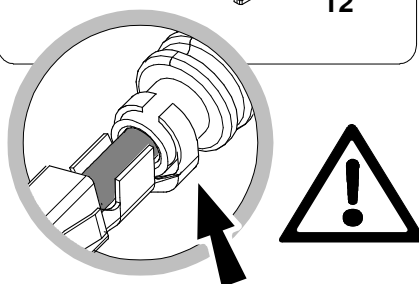
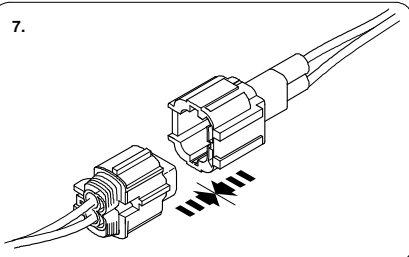
5.



6.

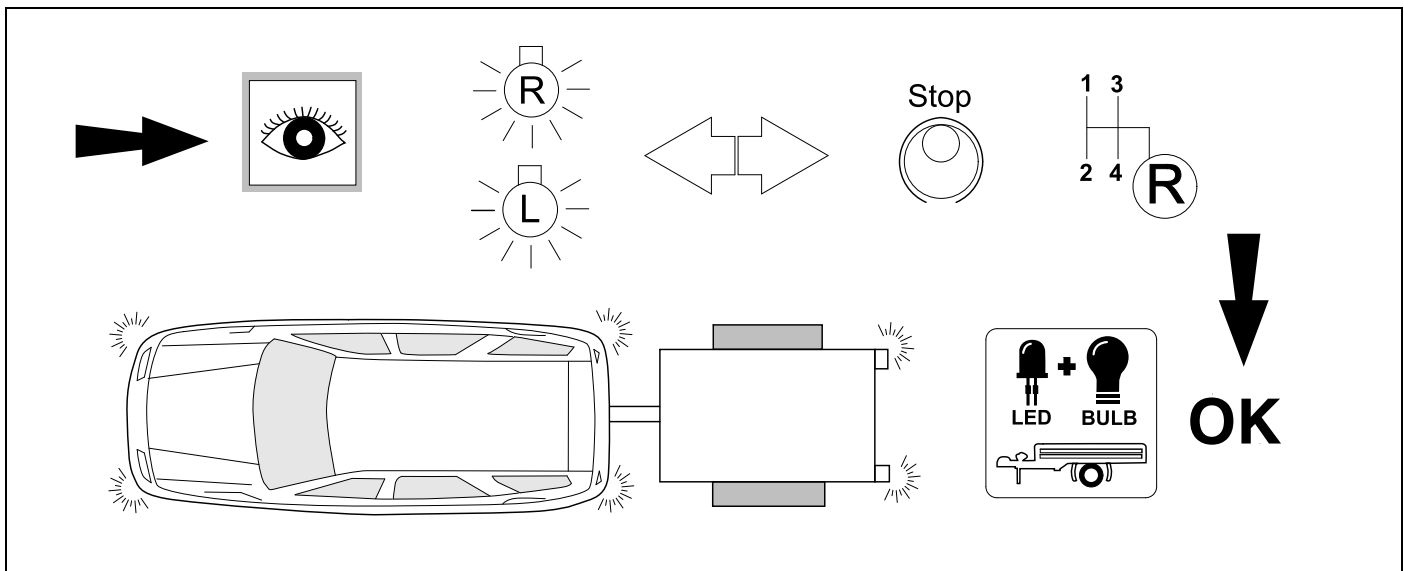


7.



19

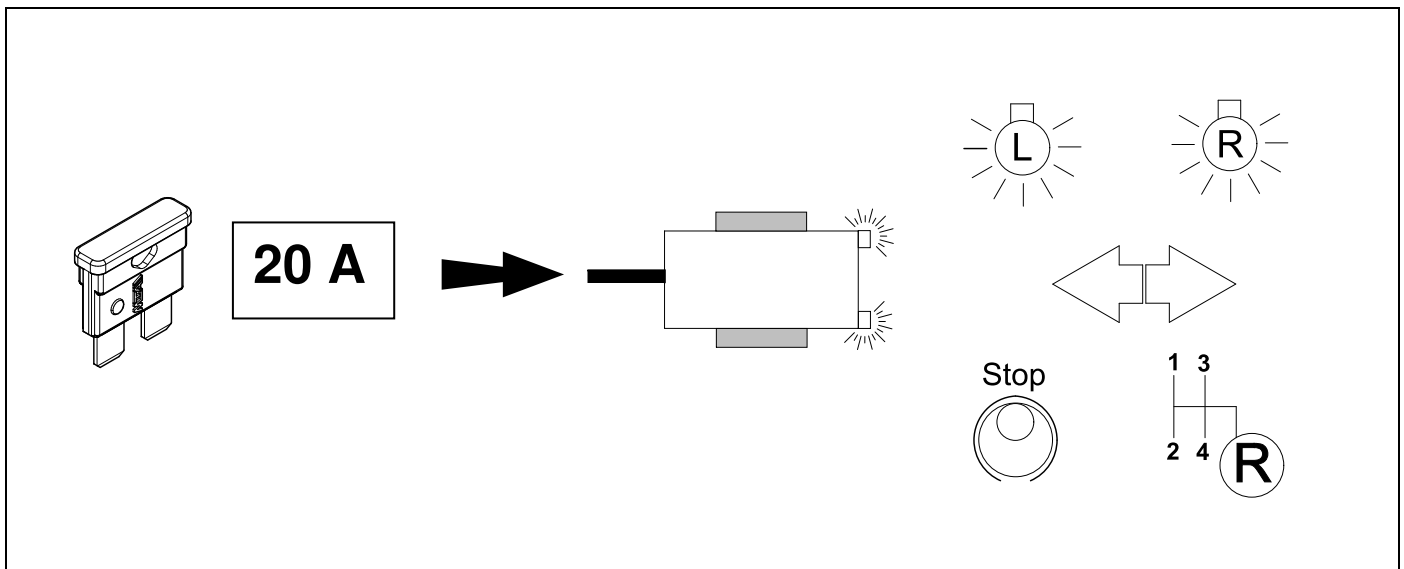
CHECK ALL LIGHTING FUNCTIONS



20

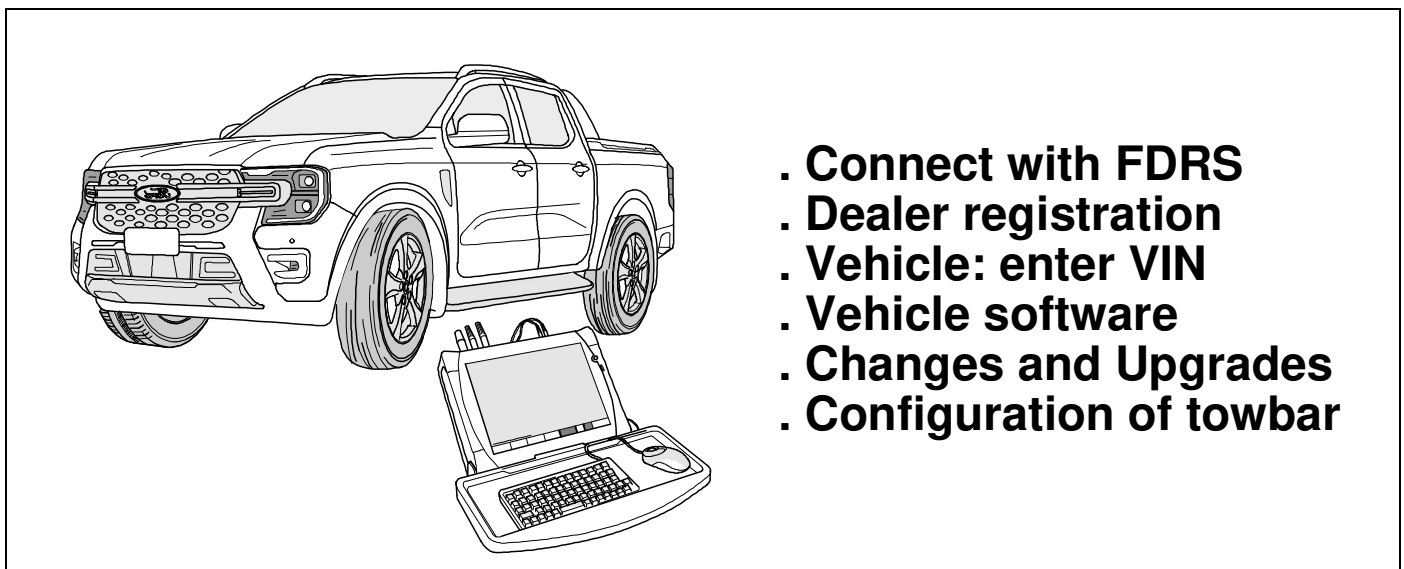


16

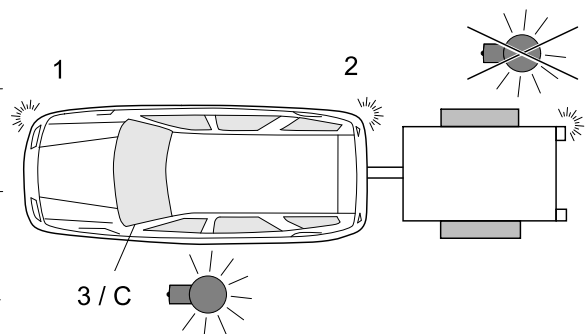
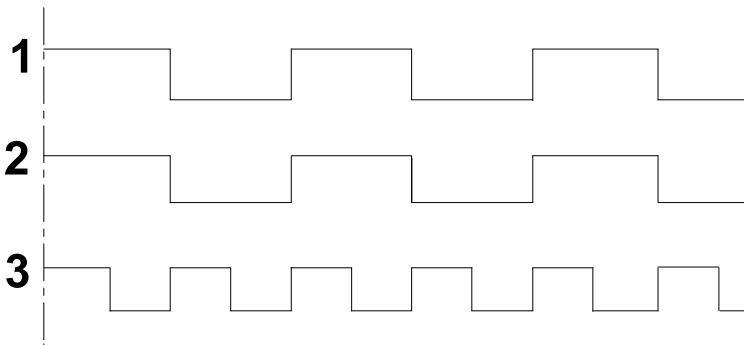


21

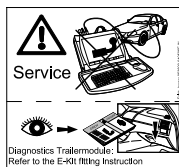
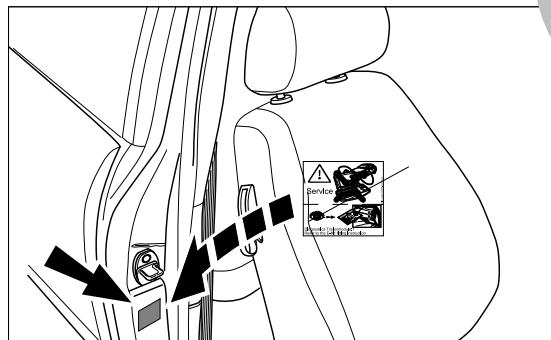
VEHICLE CODING



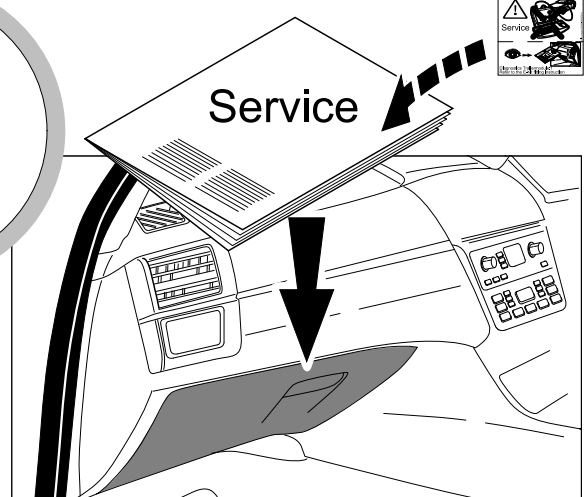
BULB OUT CONDITION INDICATED WITH INCREASED INDICATOR FREQUENCY



2x 16

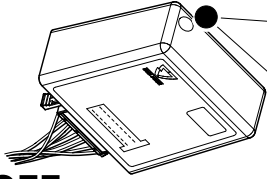
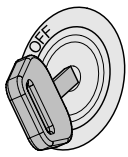


Diagnostics Trailer module:
Refer to the E-Kit fitting instruction



Status LED for self-diagnosis

Operation support



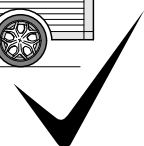
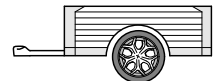
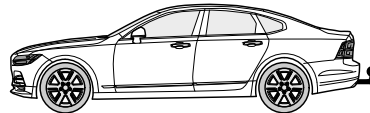
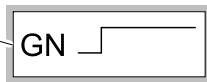
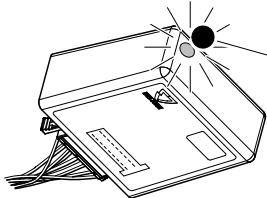
No CAN-Data =



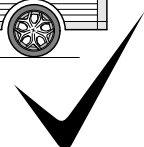
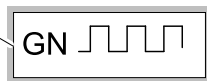
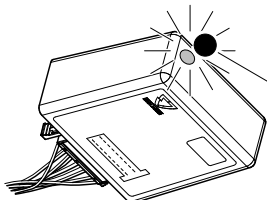
Standby / Sleepmode



Ignition OFF



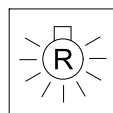
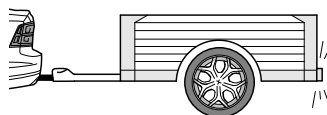
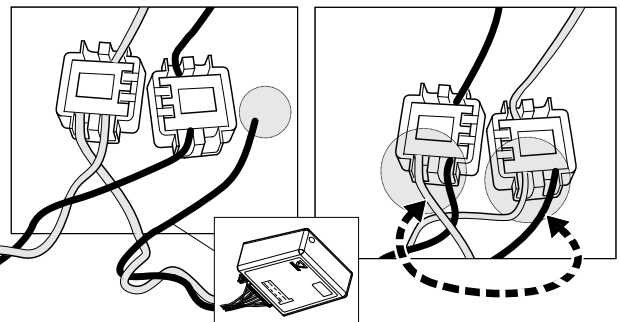
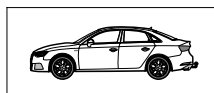
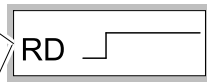
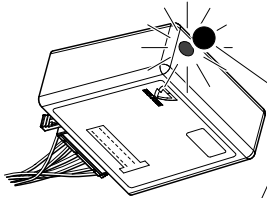
Ignition ON



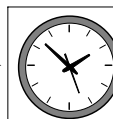
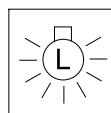
Ignition ON

Failure support

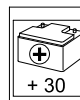
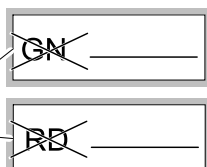
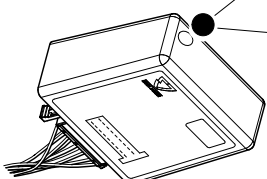
Check CAN-Data Wire



+



1x max 5 min.



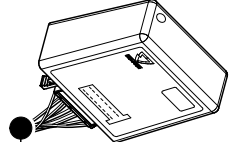
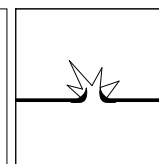
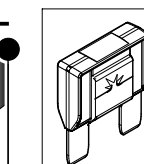
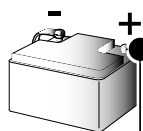
PIN 17

oder / or

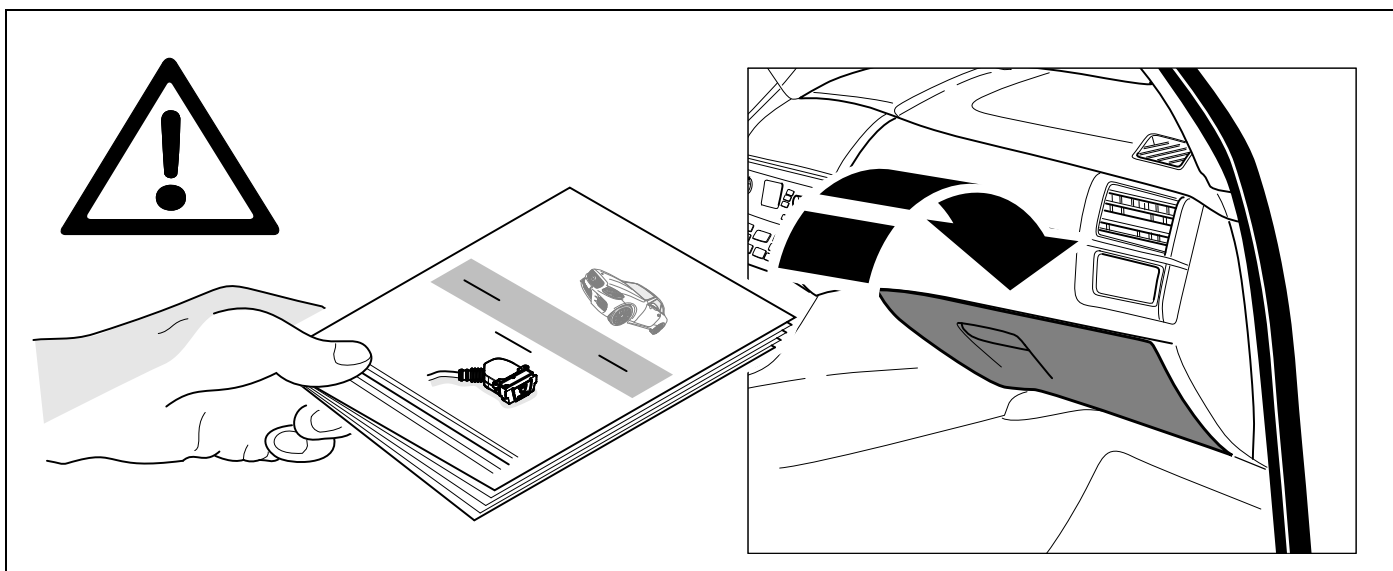


PIN 1

31



Ignition ON



Subject to change in terms of construction, equipment and colour, and may contain errors.

The information and illustrations are non-binding.