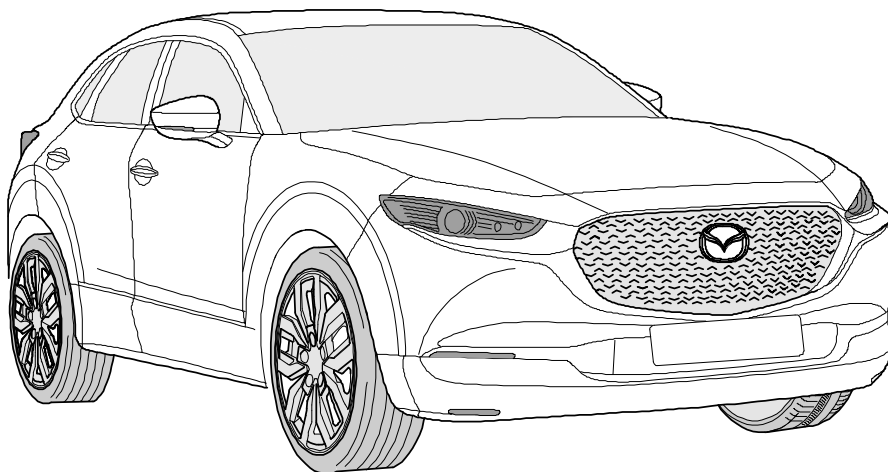




ERICH JAEGER

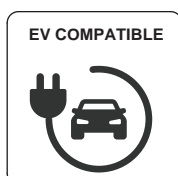
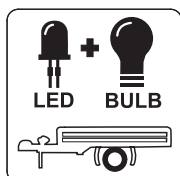
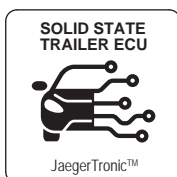
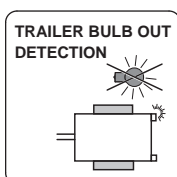
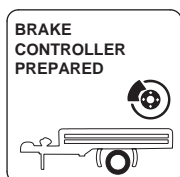
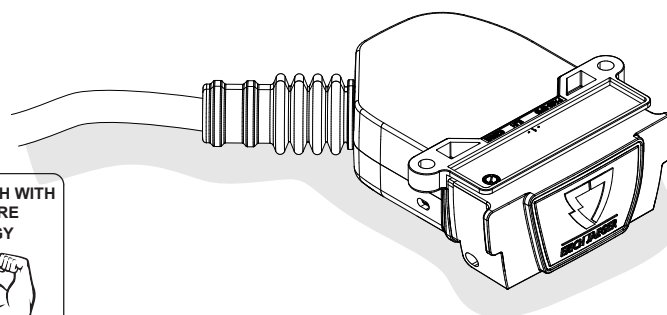
Installation instructions



Part No. 750126EJ

MAZDA
CX-30 G112

08/19 >>



Reference:

The following information must be reviewed before beginning the assembly:

The installation instructions are to be thoroughly read.

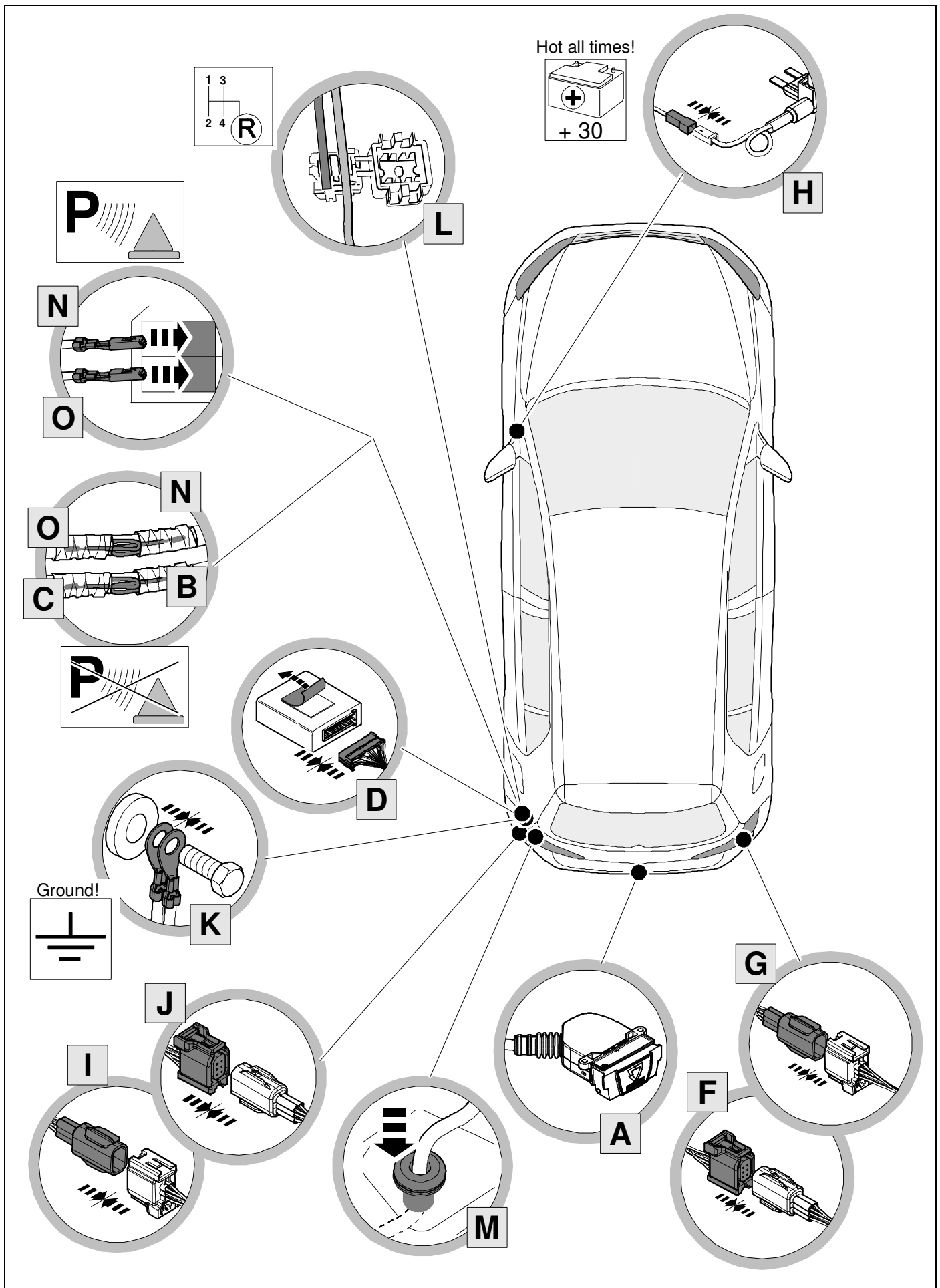
The installation should be carried out by qualified personnel with the relevant technical knowledge.

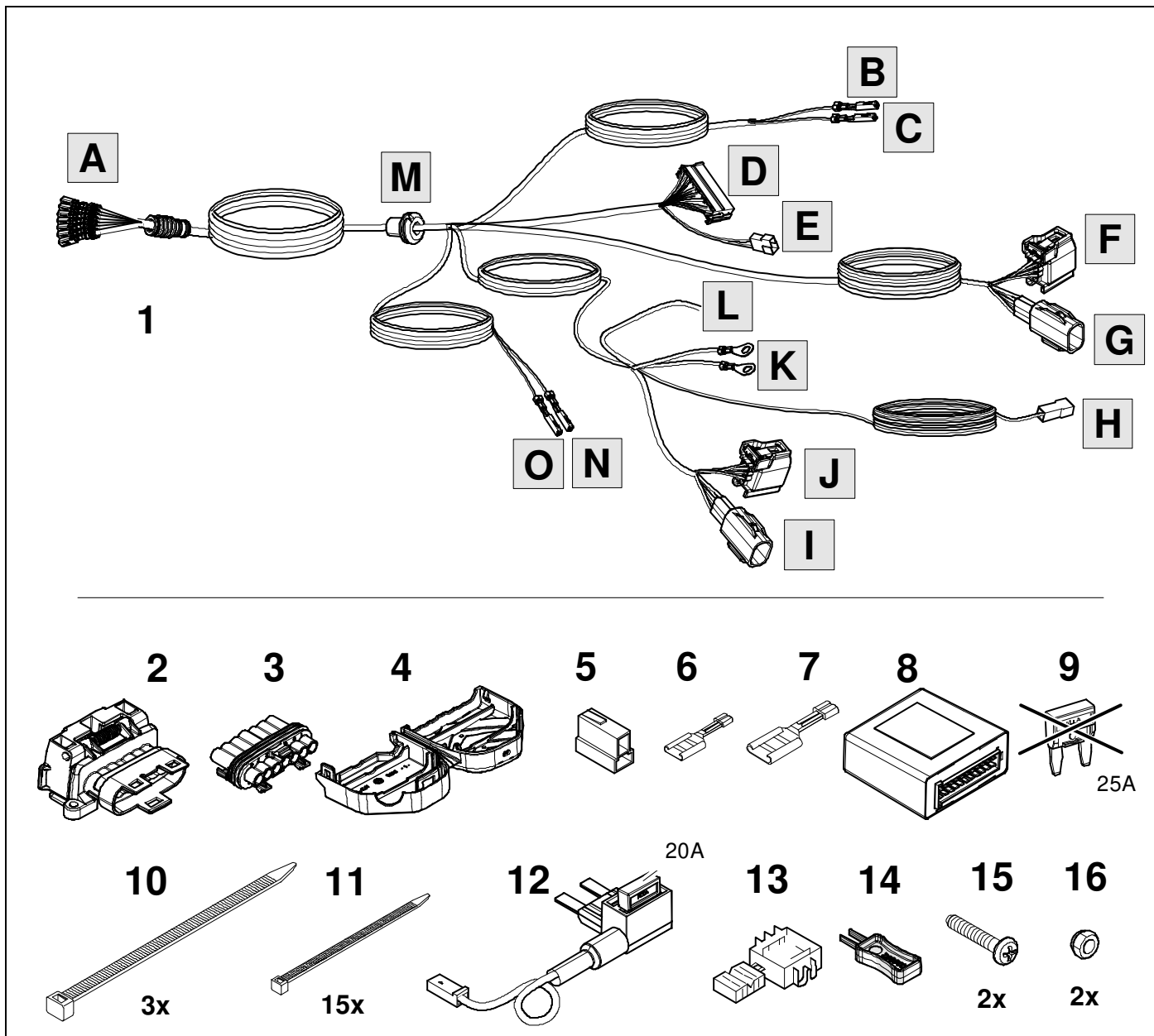
The vehicle manufacturers' current technical notices and information on retrofitting must be followed.

The removal and replacement instructions found in the current repair manuals must be followed.

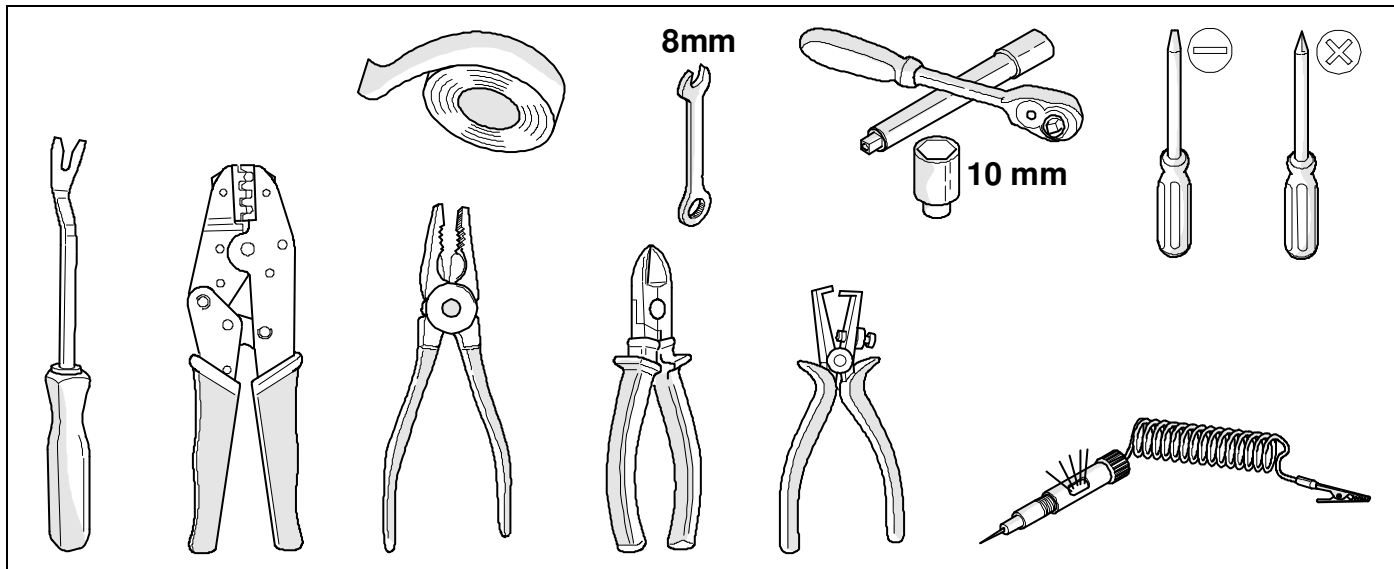
It must be ensured that the vehicle is technically suitable for the installation of a trailer hitch.

OVERVIEW

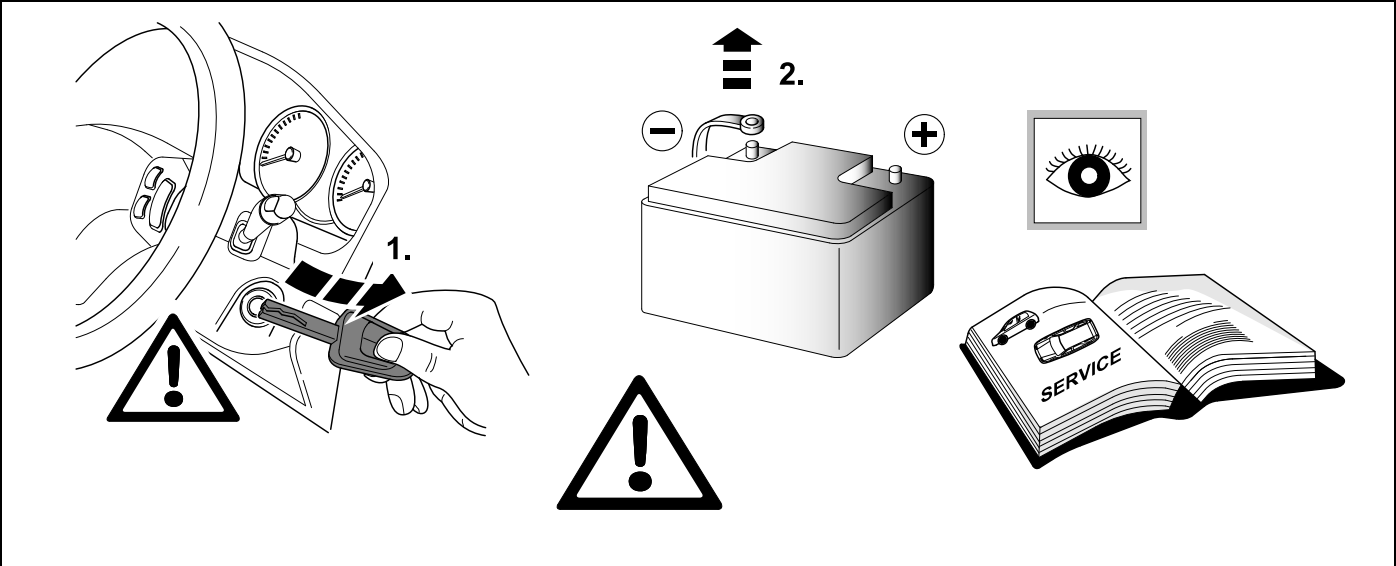


KIT

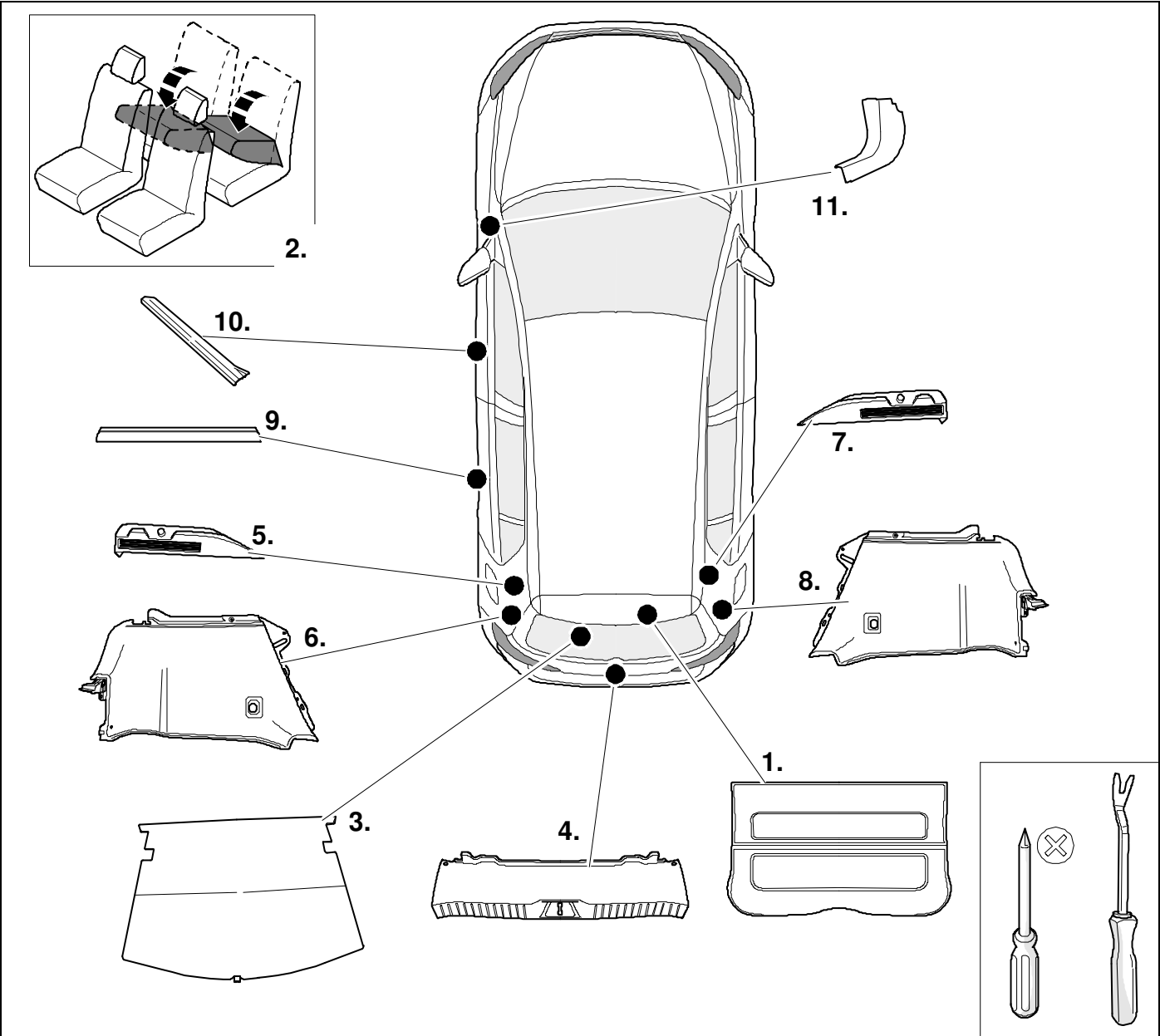
TOOLS



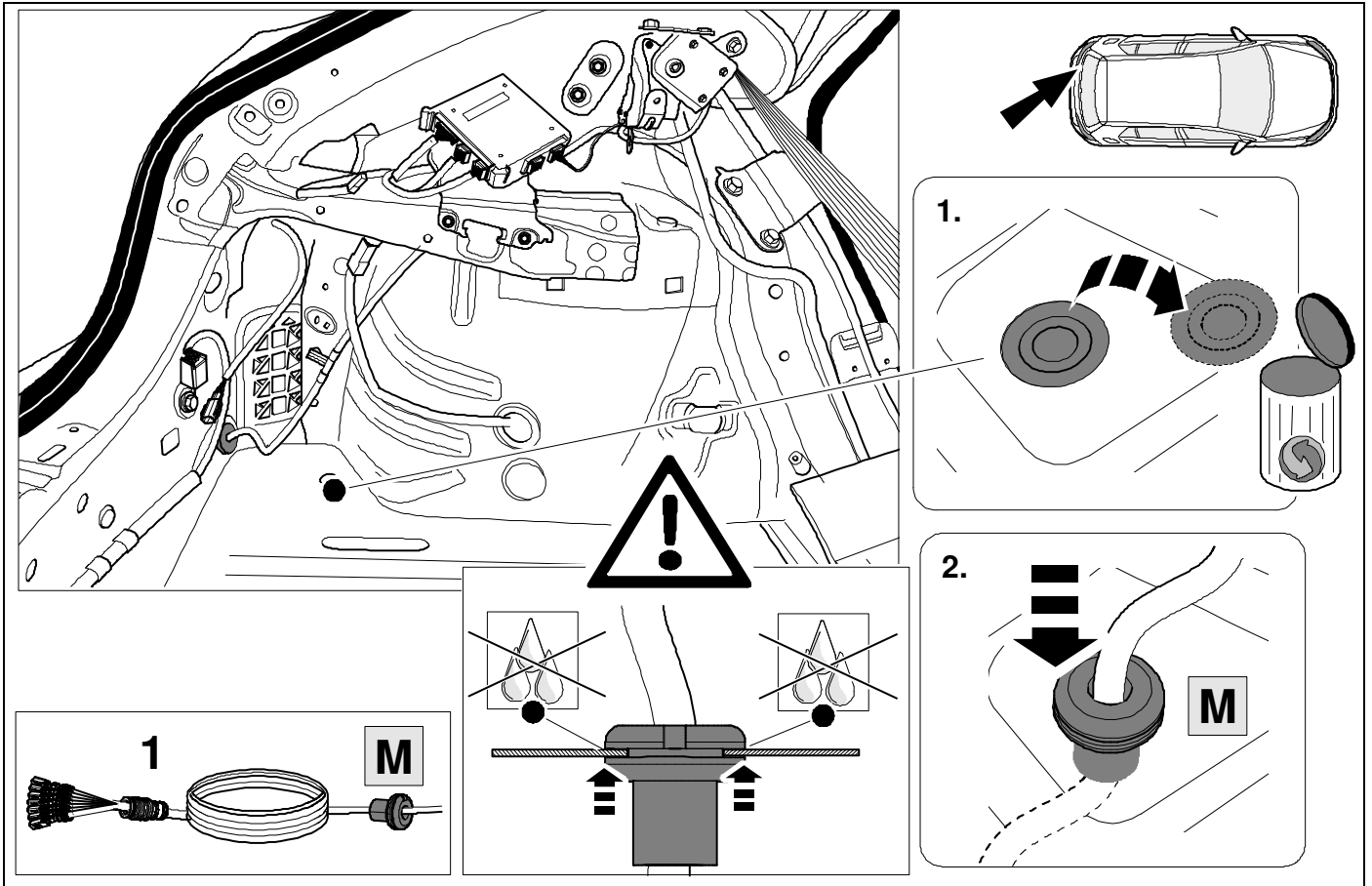
1



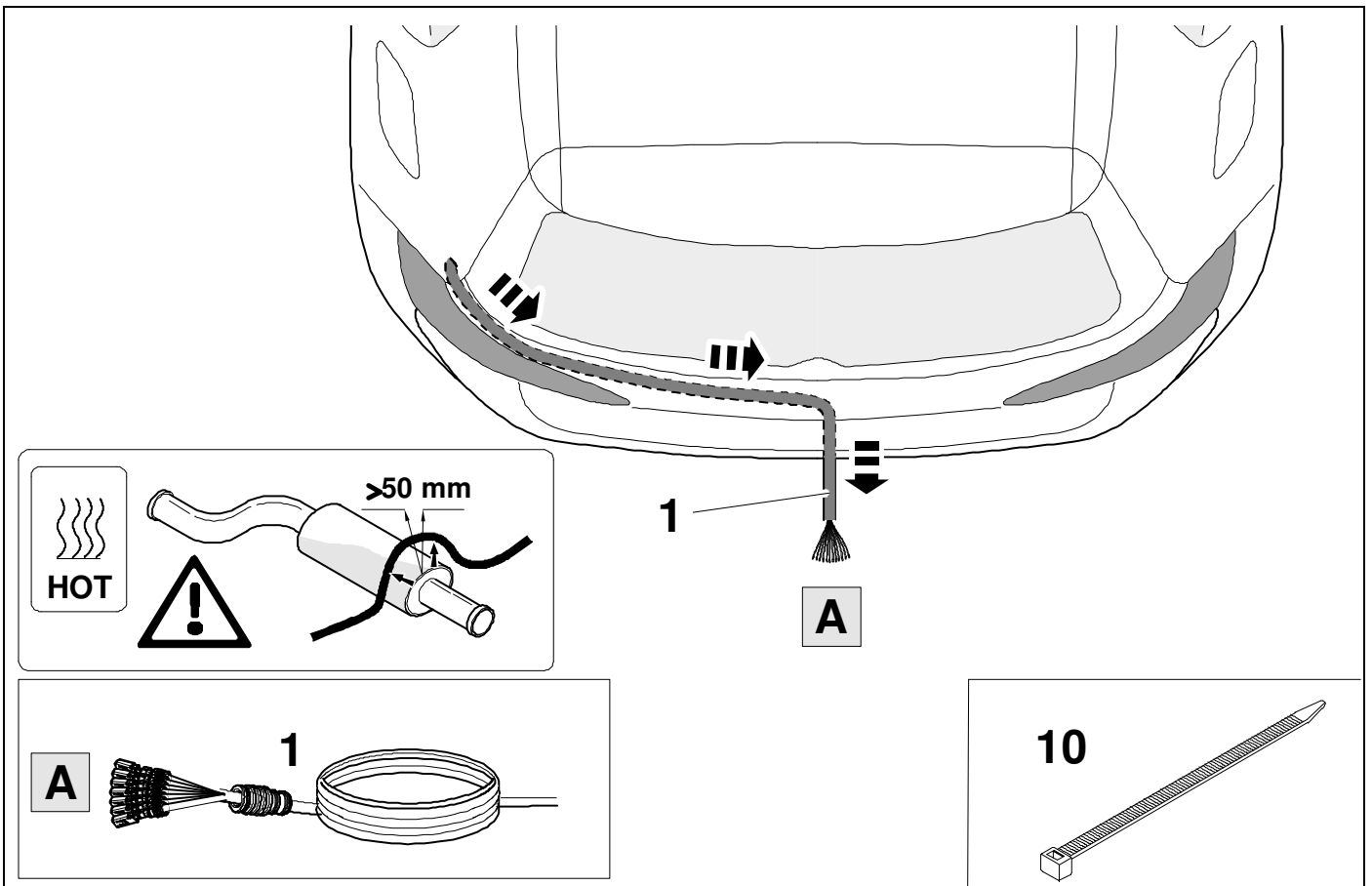
2

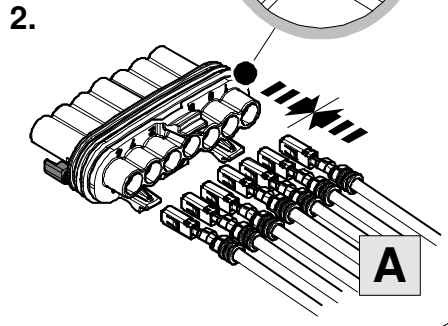
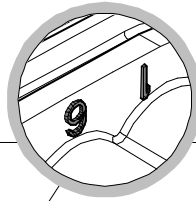
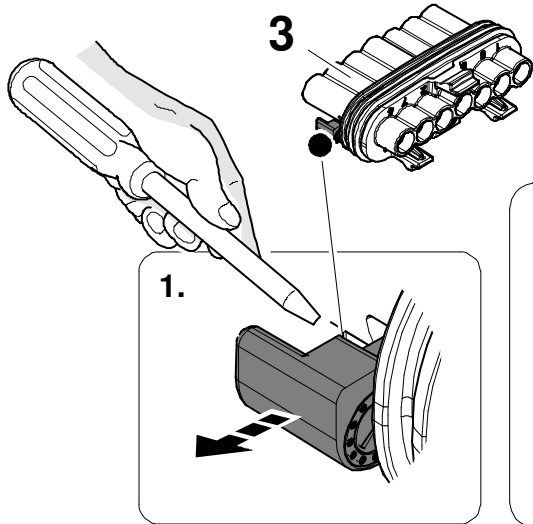


3

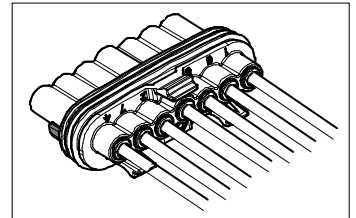
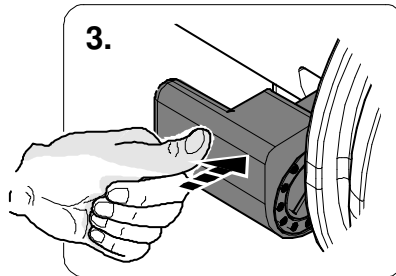
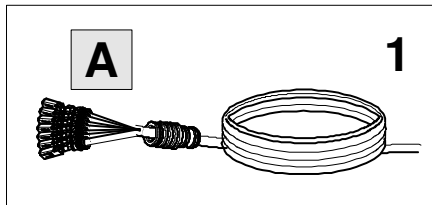


4

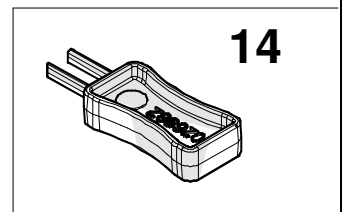
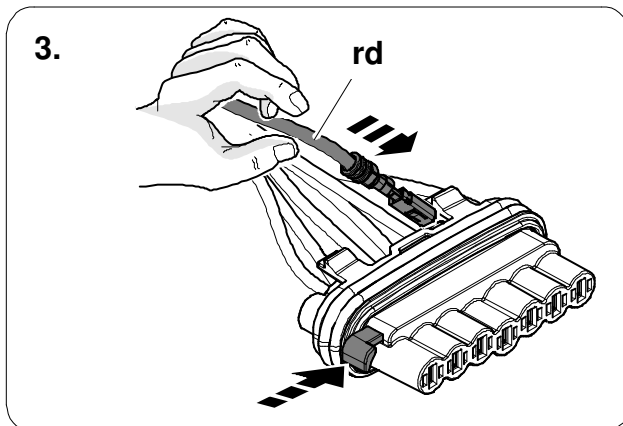
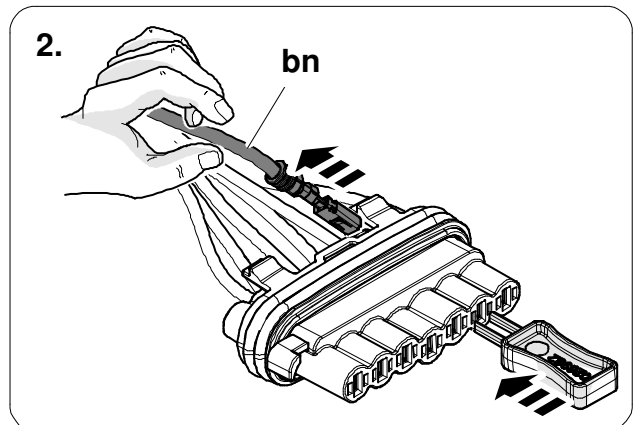
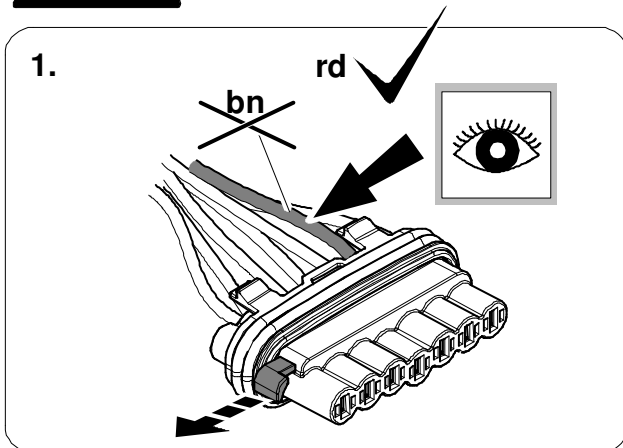


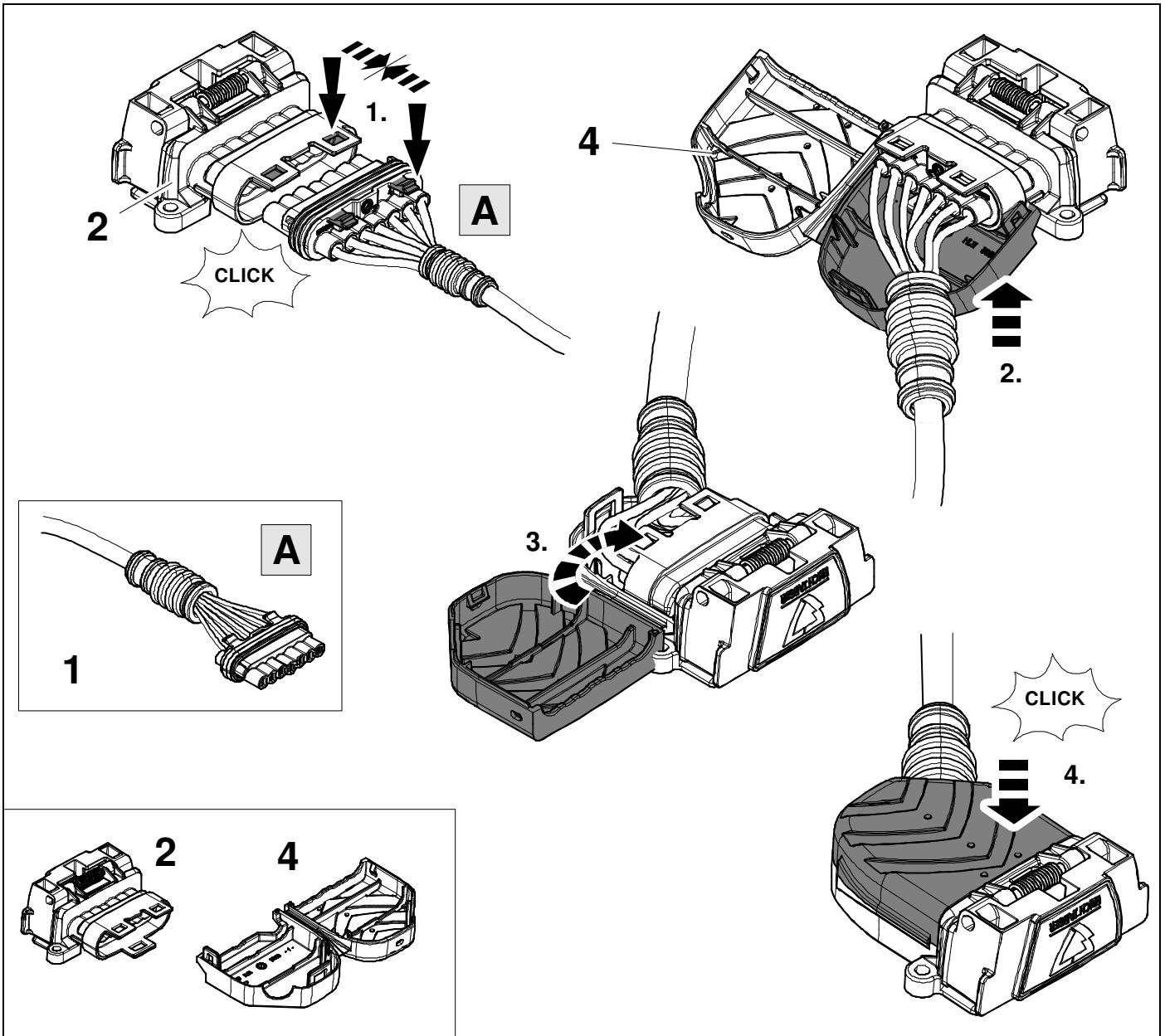


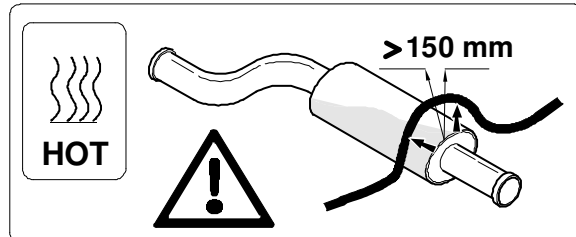
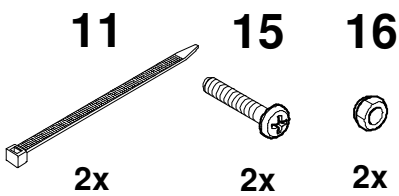
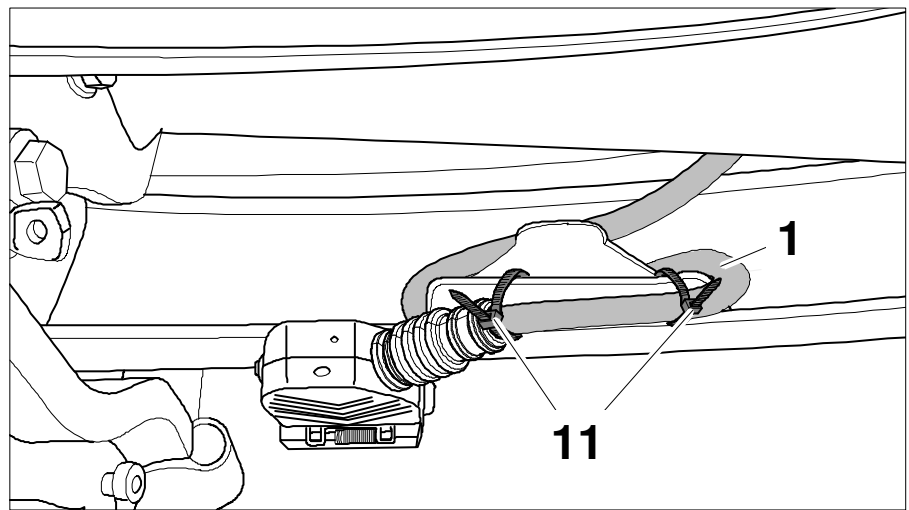
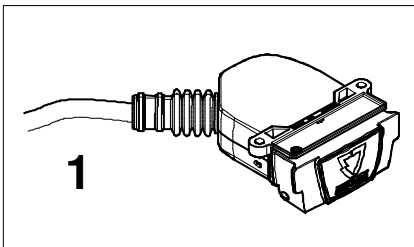
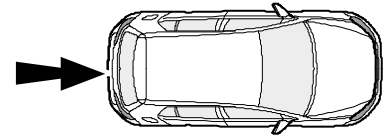
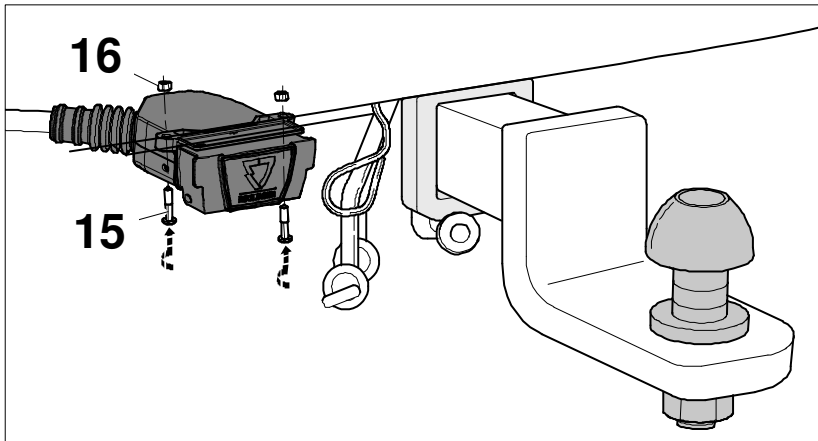
ye	1	
rd	6	
bu	5	
wh	3	
bk	2	
bn	7	
gn	4	



In case of wrong pin insert:







8



1	ye	
2	bk	
3	wh	
4	gn	
5	bu	
6	rd	
7	bn	

9	bk	wh	gy	gn	rd	bu	ye	bn	pu	or	no
	black	white	grey	green	red	blue	yellow	brown	purple	orange	not occupied

10

Ground!

K

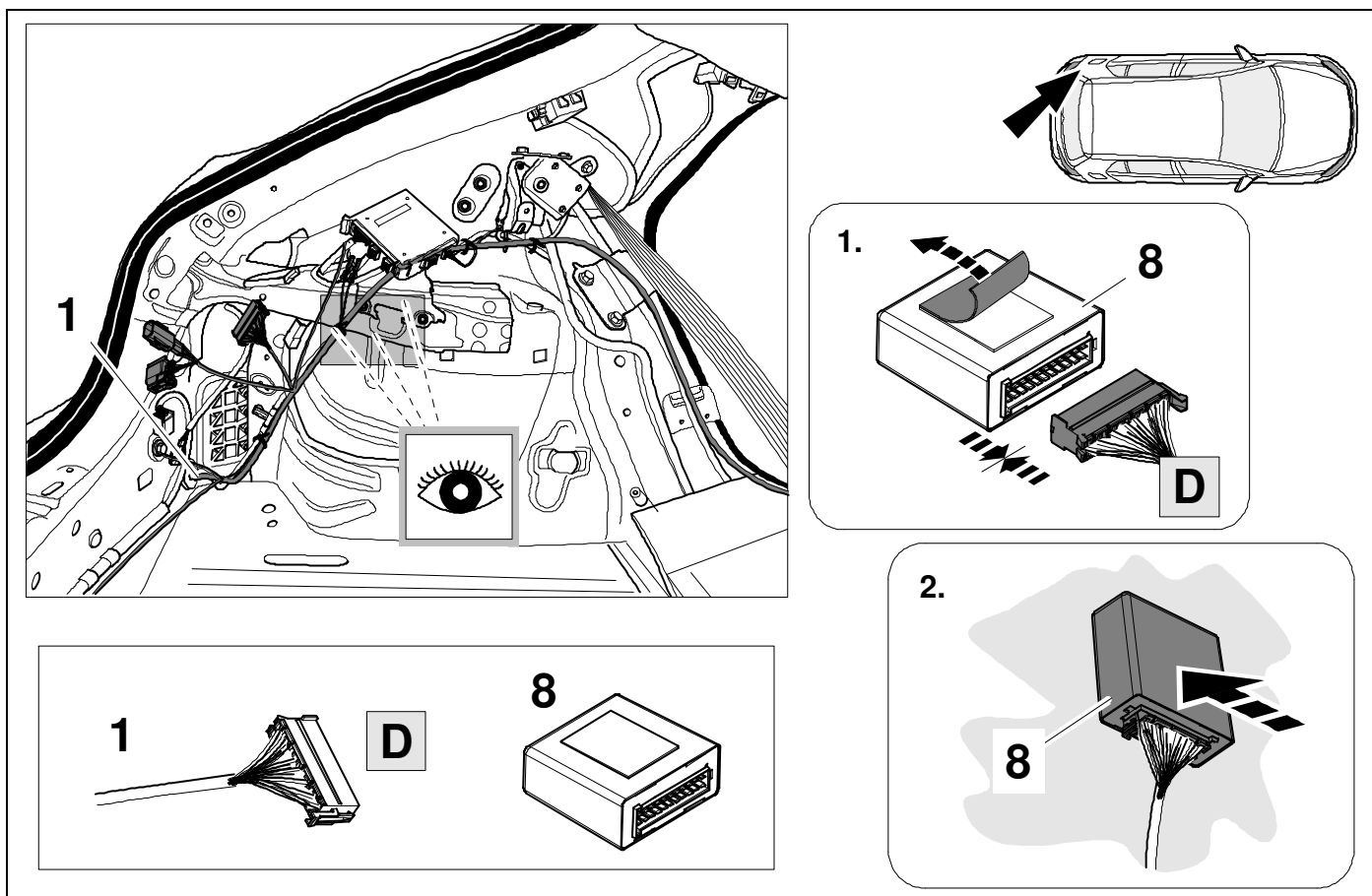
1

K

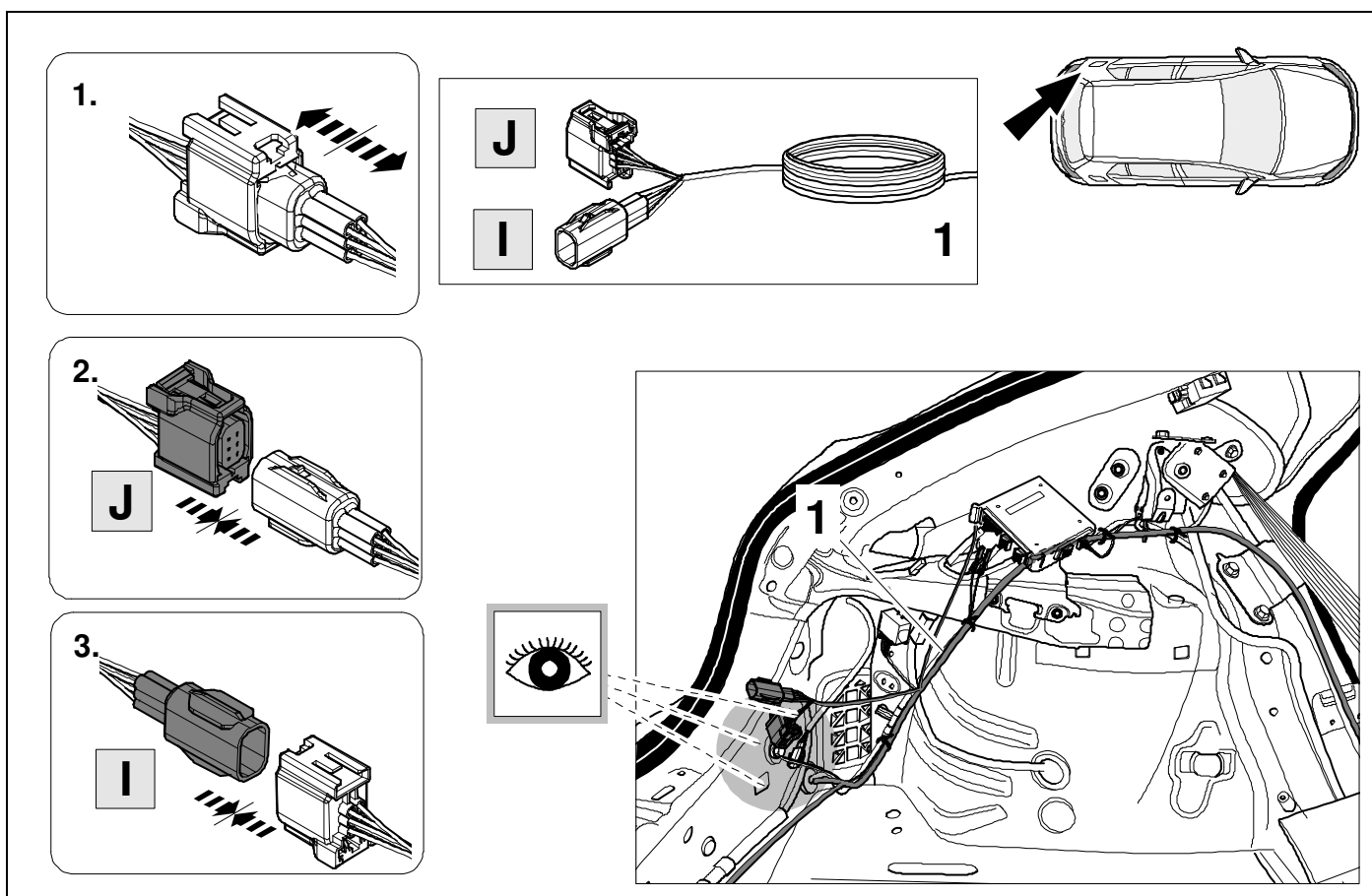
11

10 mm

11



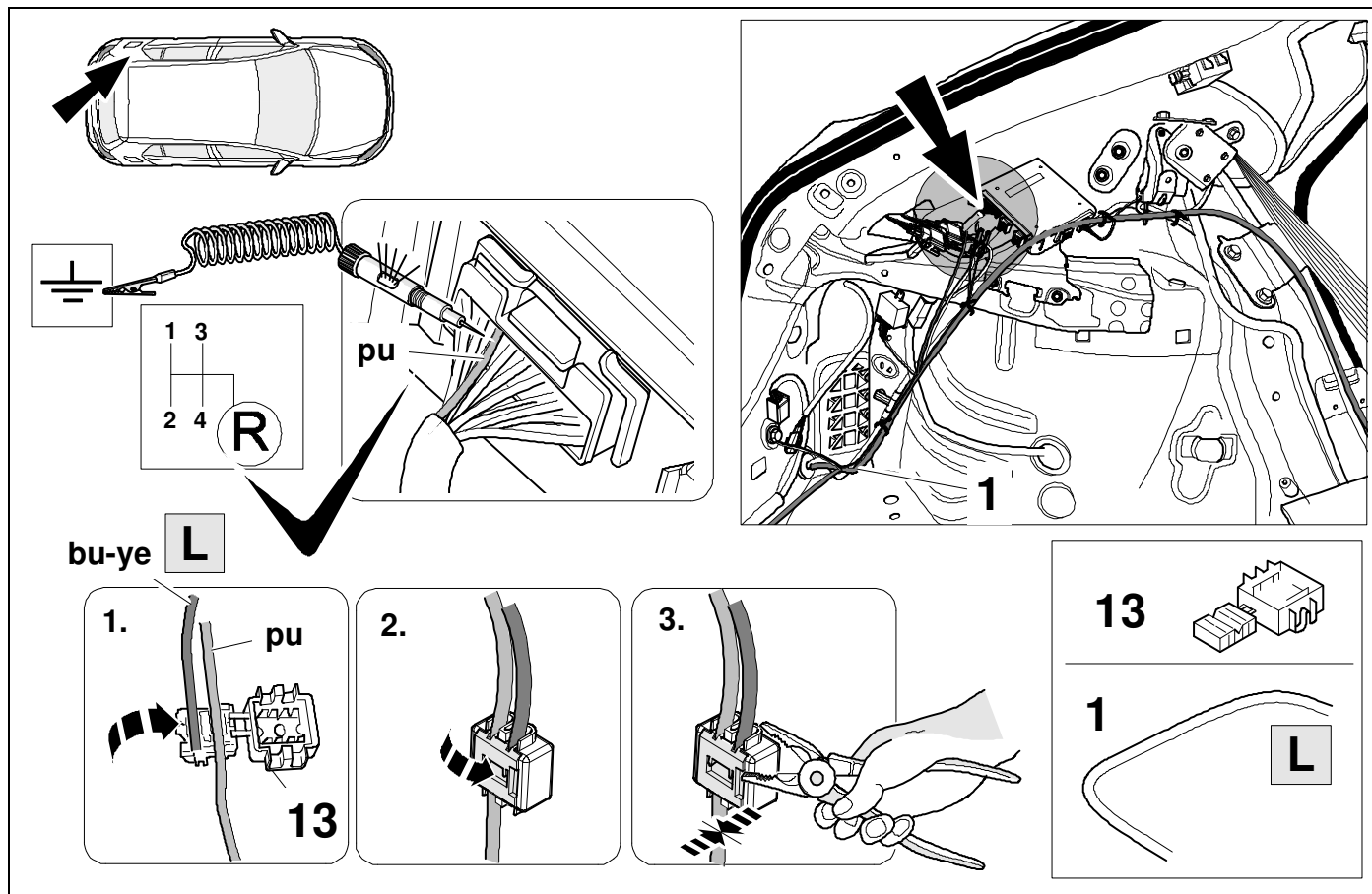
12



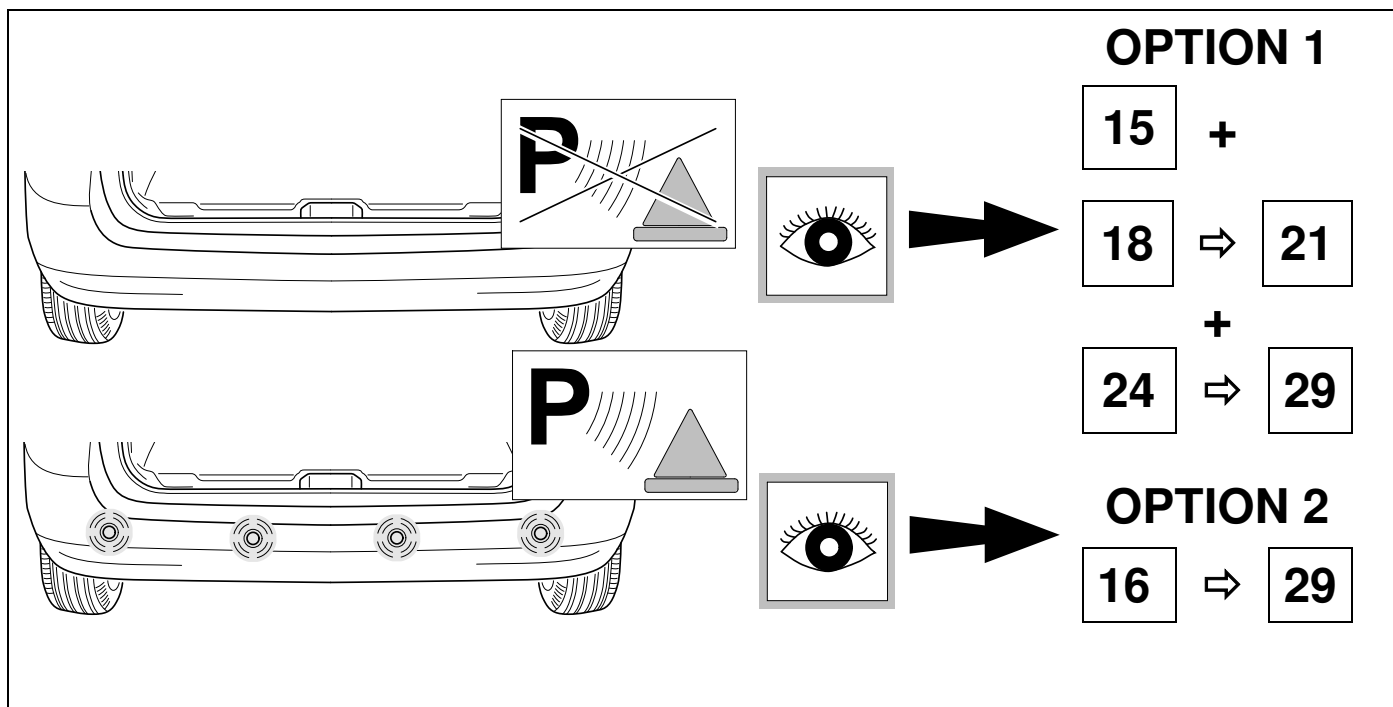
13

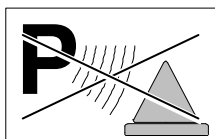


9

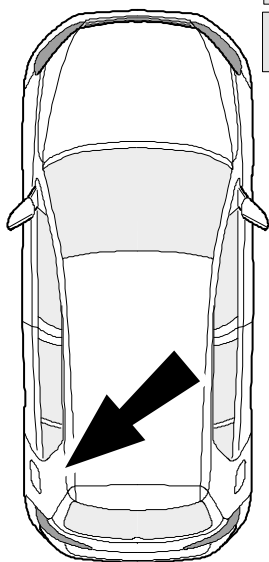


14

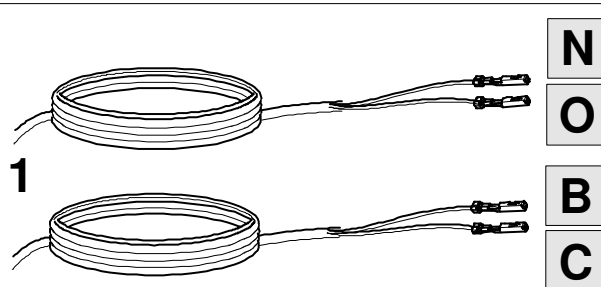
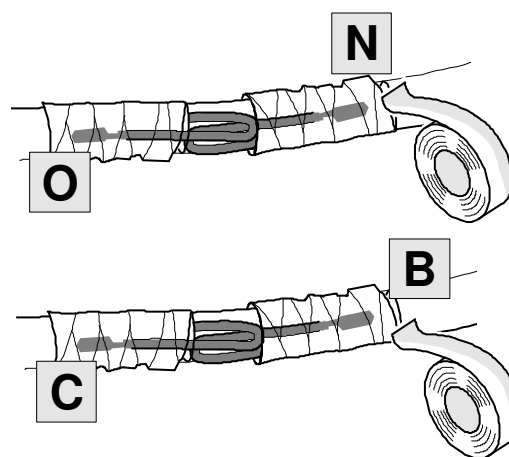


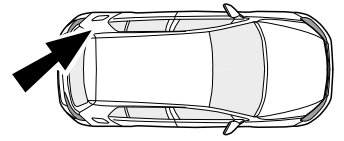
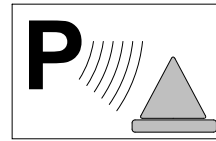
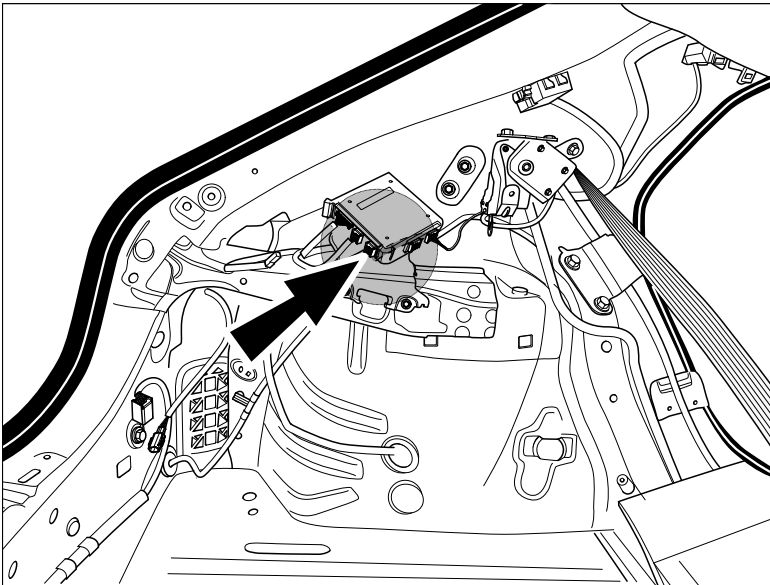


without PDC



- | | |
|----------|-------|
| N | bk-gn |
| O | wh |
| B | bk-bu |
| C | wh |



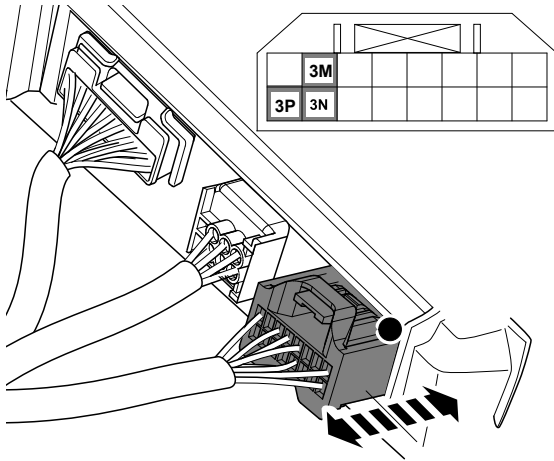


Please note PIN locations by model VIN number.

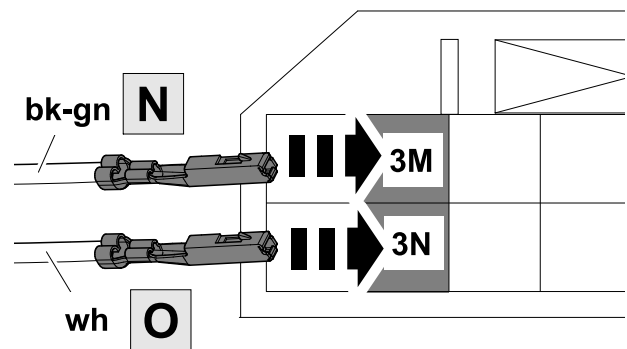
Before cut off: Pin 3M and 3N

After cut off: Pin 3P and 3N

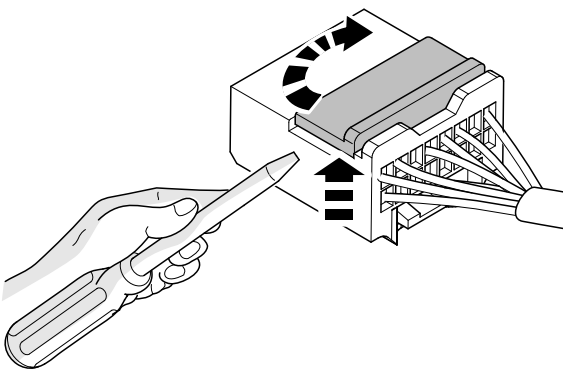
1.



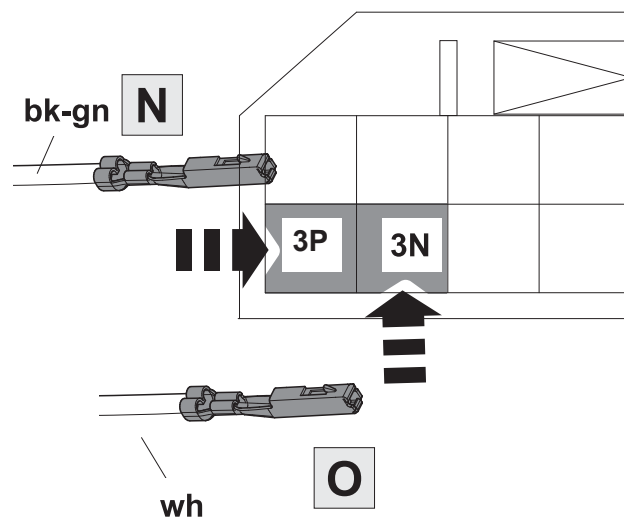
CX-30 Before JM0-DM****-00250000 09/2023



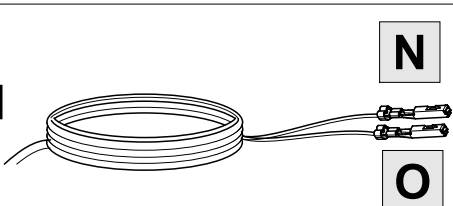
2. **Open secondary lock!**

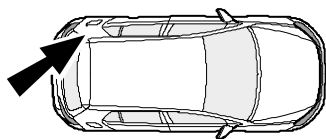
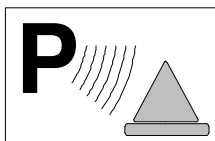


CX-30 From JM0-DM****-00250000 09/2023

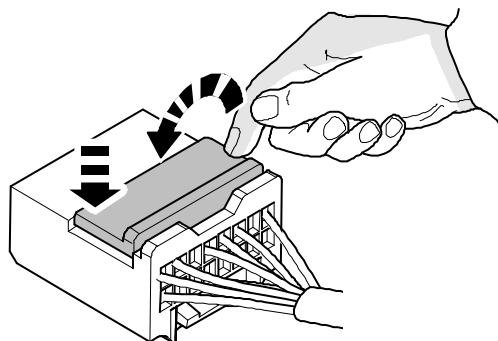


1

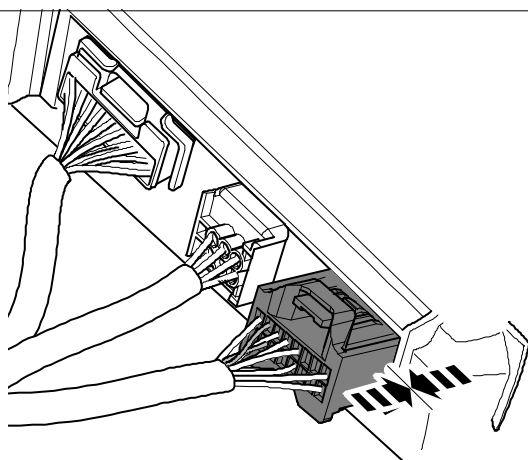




1. Close secondary lock!

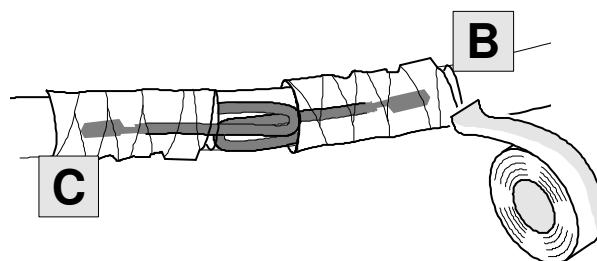


2.



3.

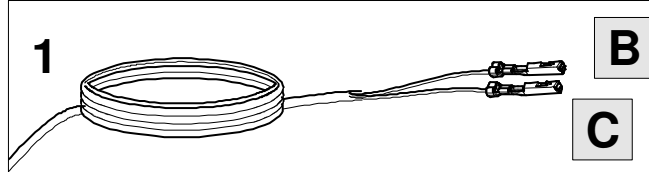
Not used on Mazda CX-30

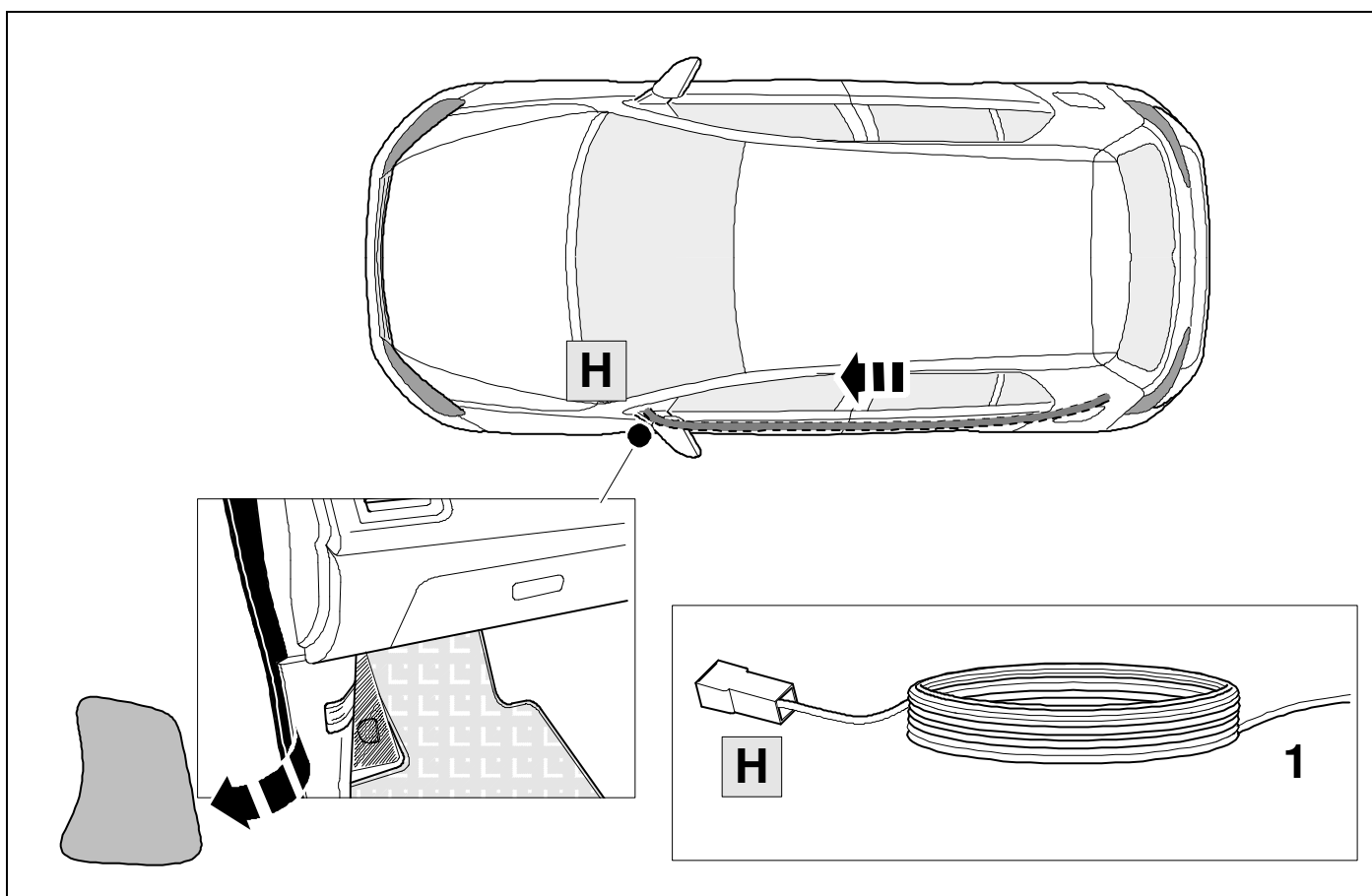
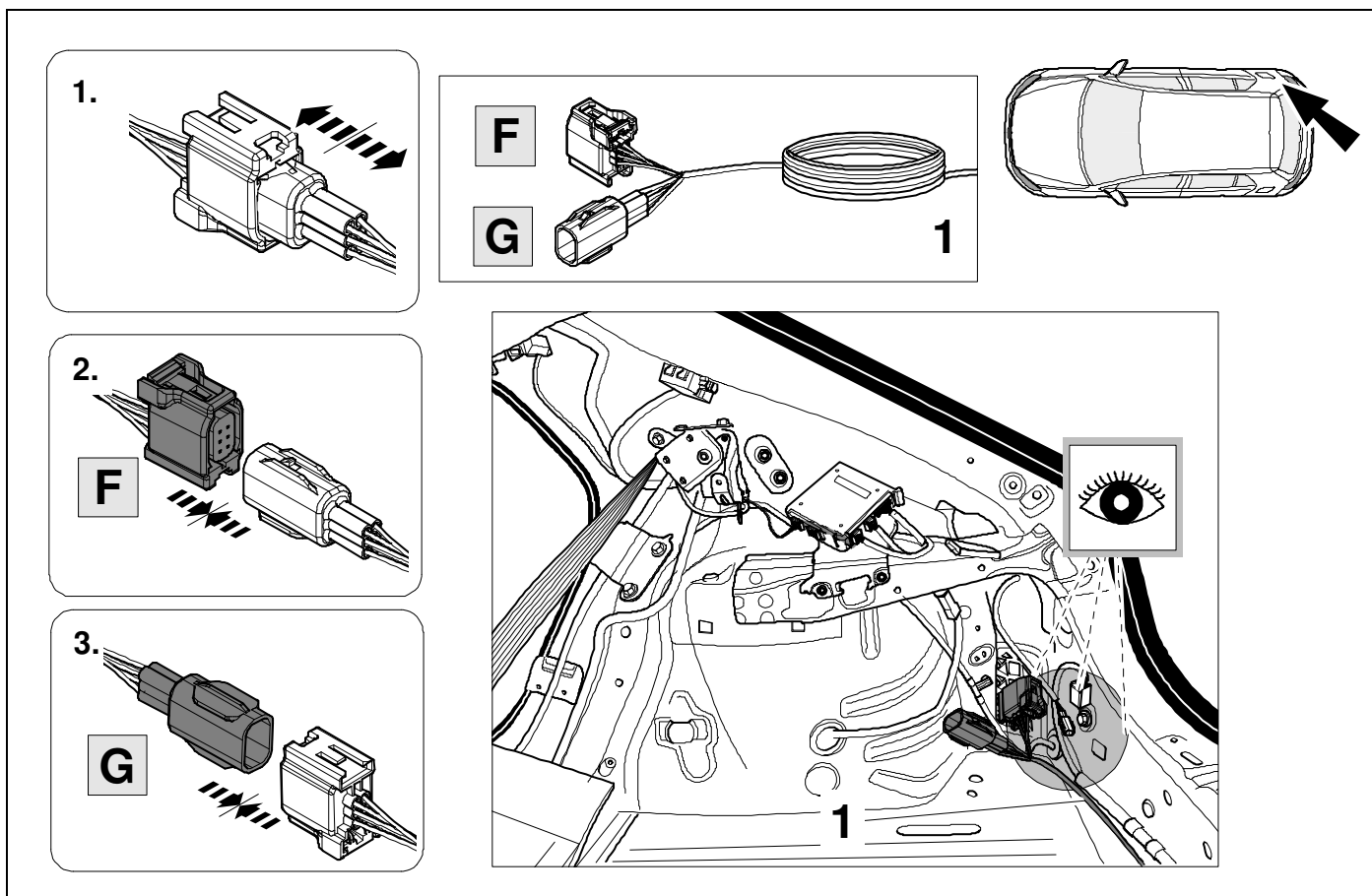


B bk-bu

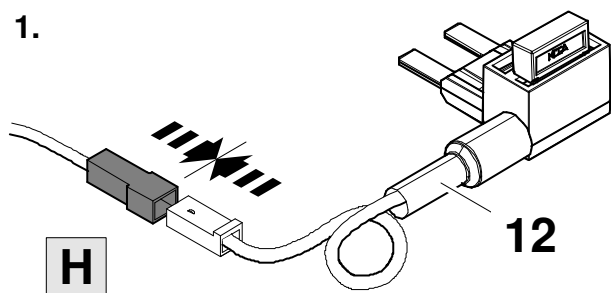
C wh

1



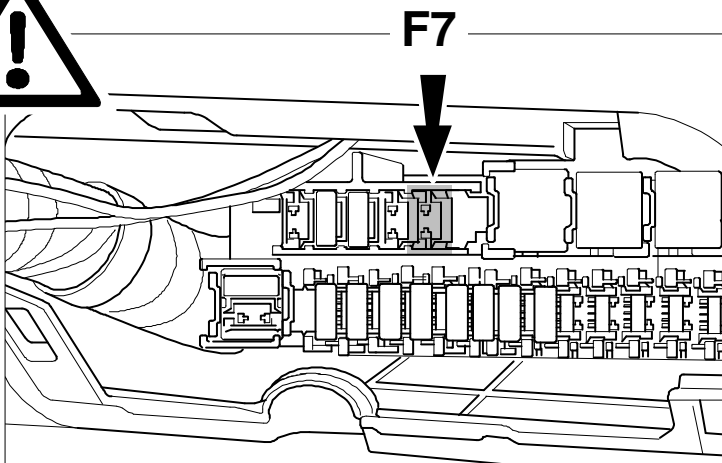
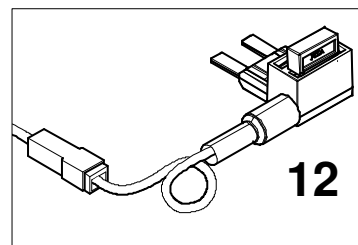
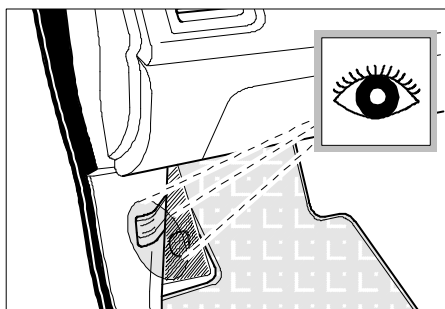
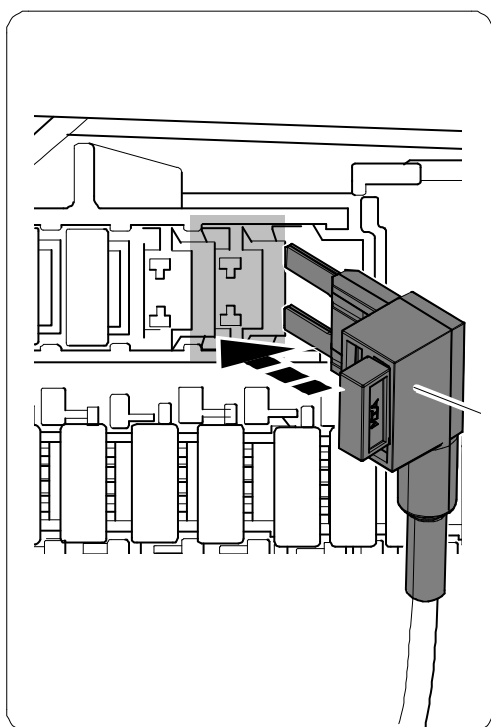
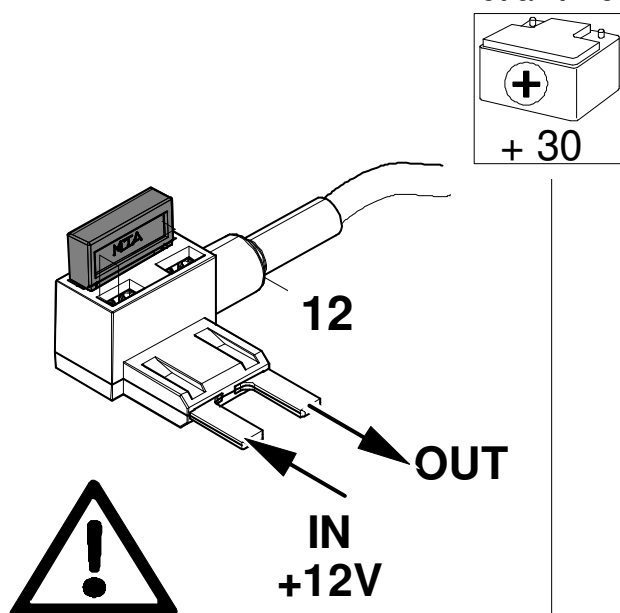


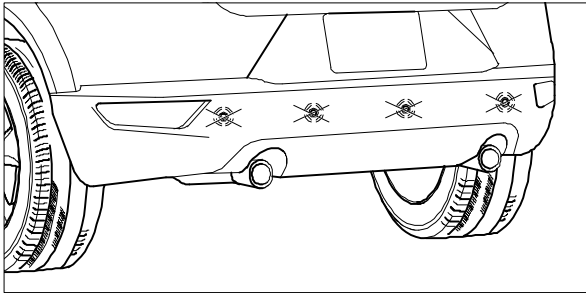
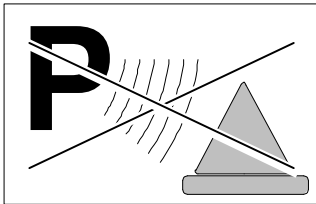
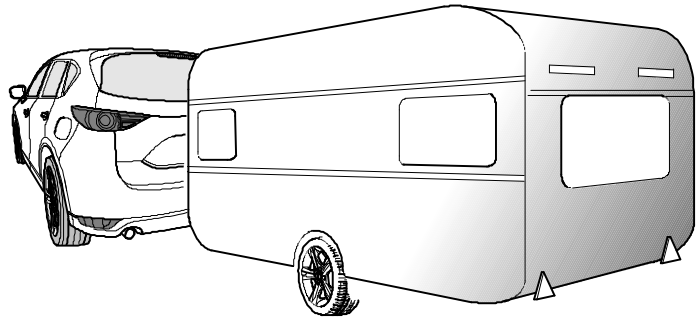
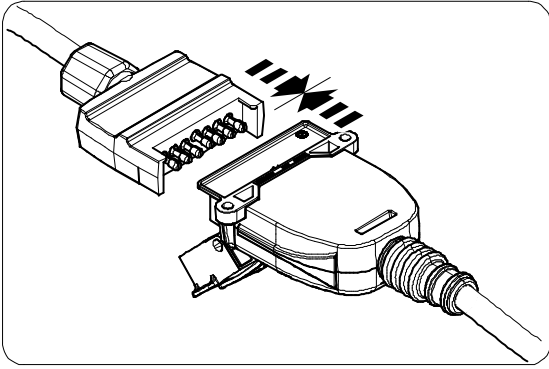
1.



2.

Hot all times!

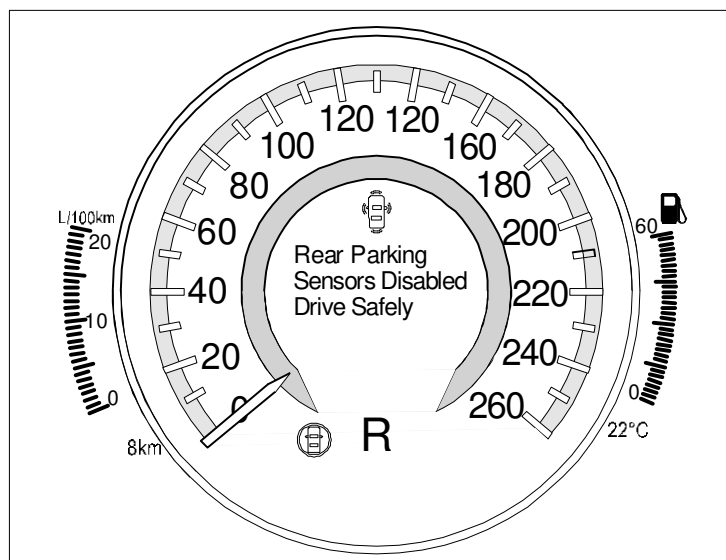


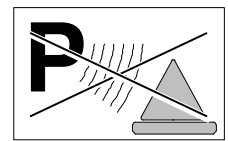
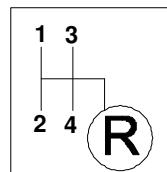
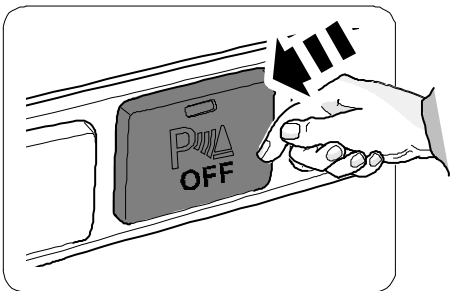
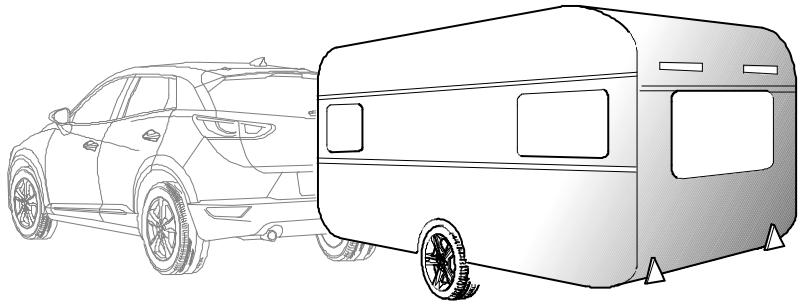
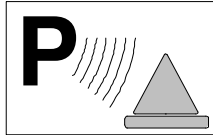
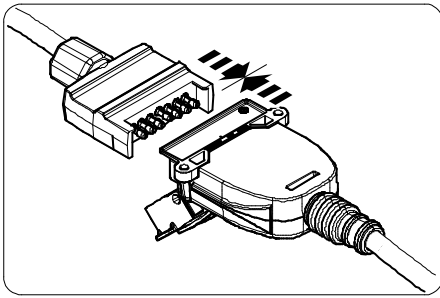


The PDC or SCBS-R system is not active while the parking brake is engaged.



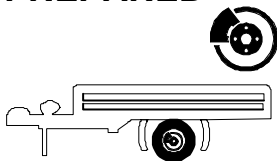
In order to test automatic PDC and SCBS-R deactivation while stationary, plug in a trailer light tester or trailer and ensure the parking brake is disengaged. A deactivation message will be displayed as shown.



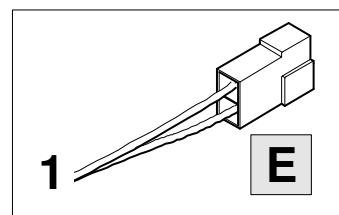




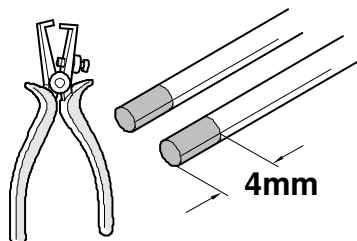
BRAKE CONTROLLER PREPARED



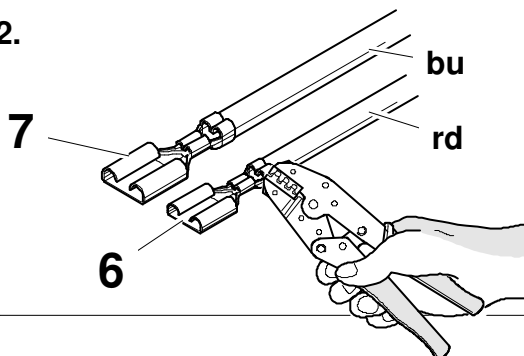
Trailer Brake Preparation



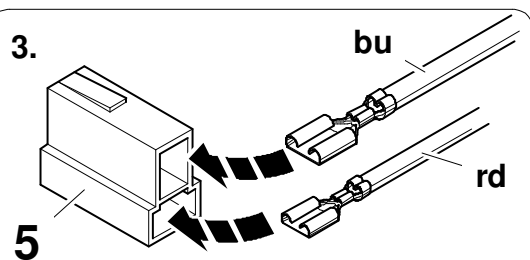
1.



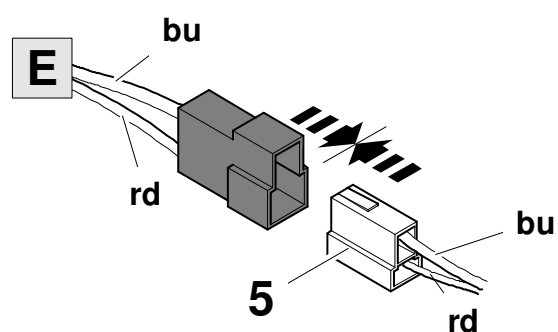
2.



3.



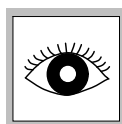
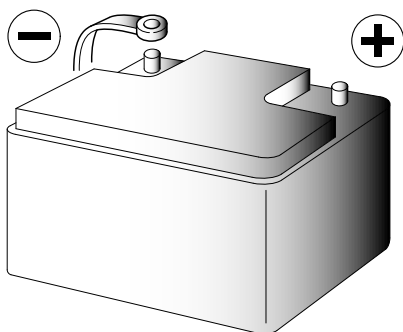
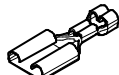
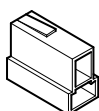
4.



5

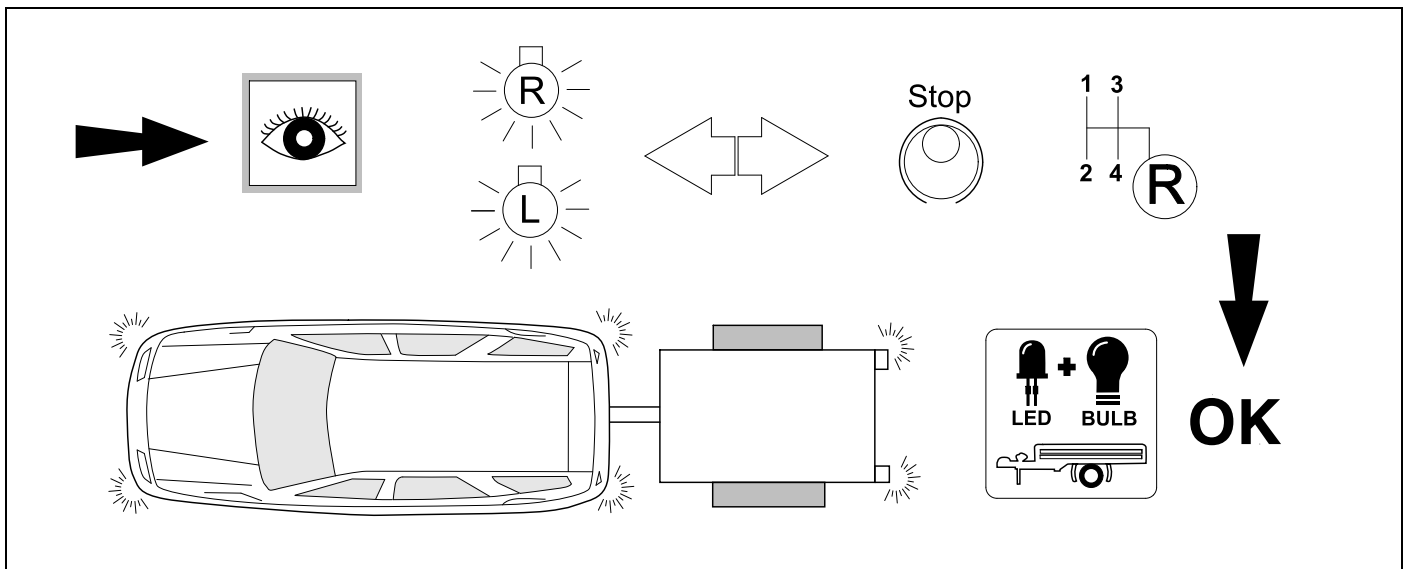
6

7



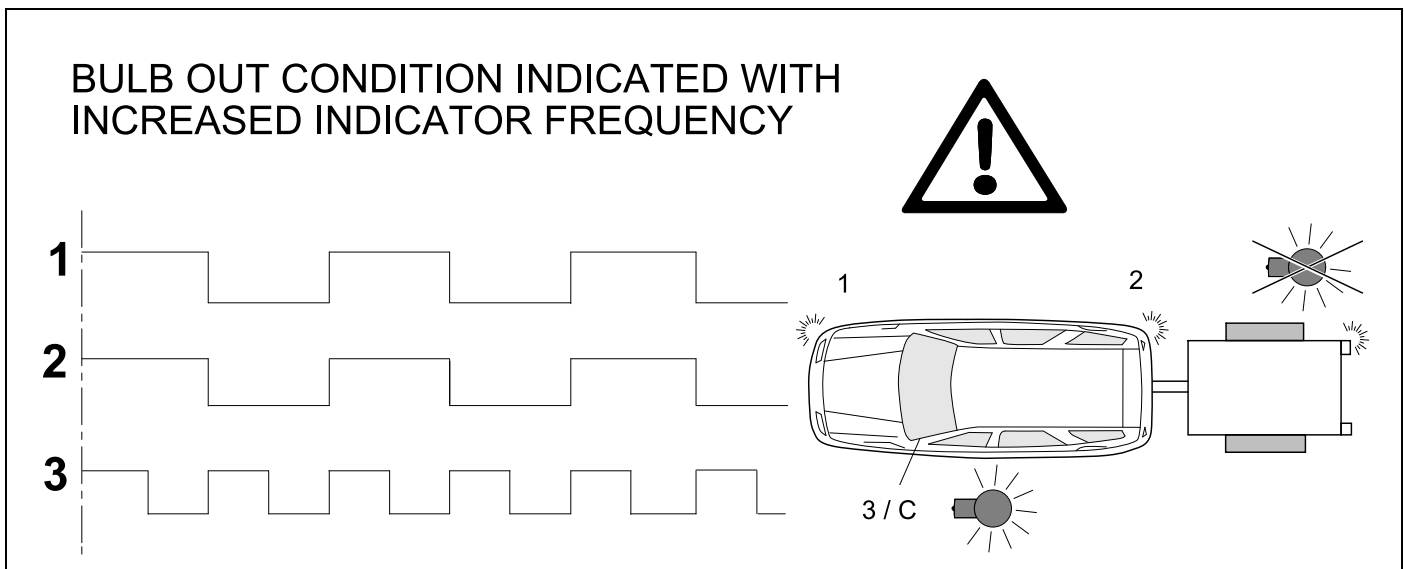
26

CHECK ALL LIGHTING FUNCTIONS



27

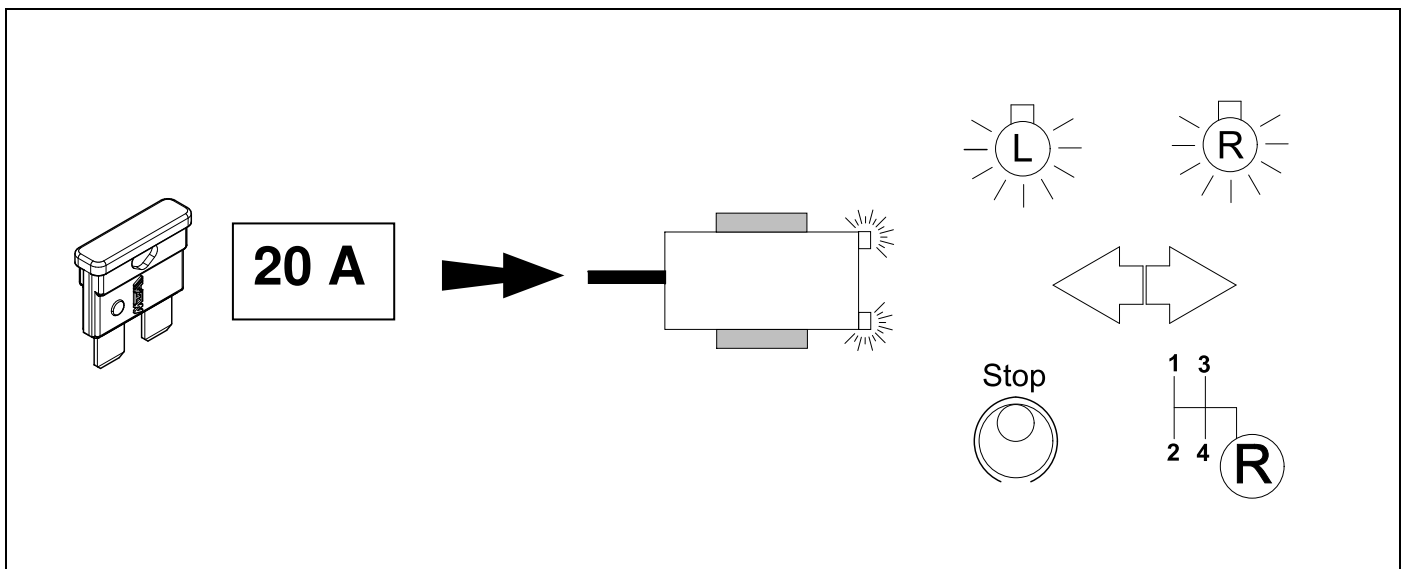
CHECK BULB OUT DETECTION

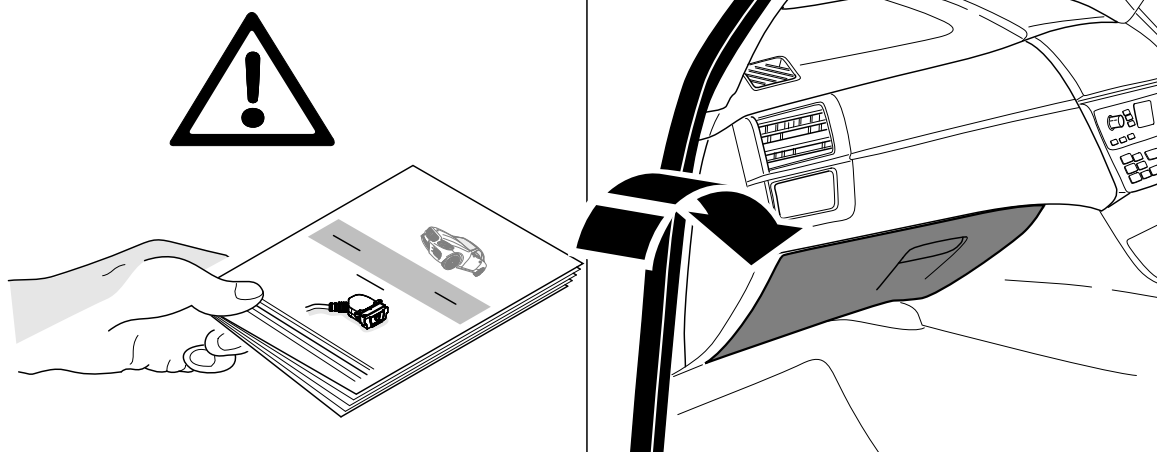


28



21





Subject to change in terms of construction, equipment and colour, and may contain errors.
The information and illustrations are non-binding.