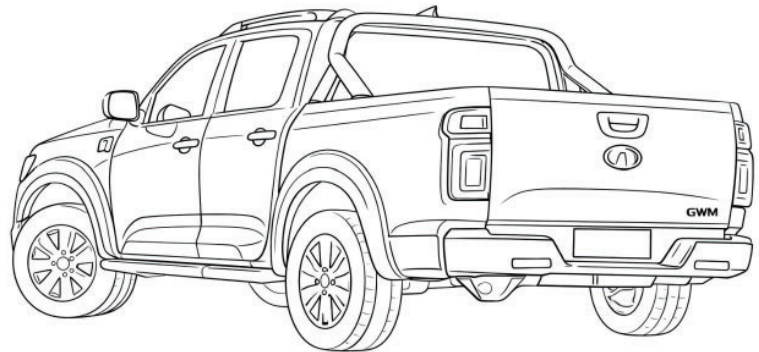
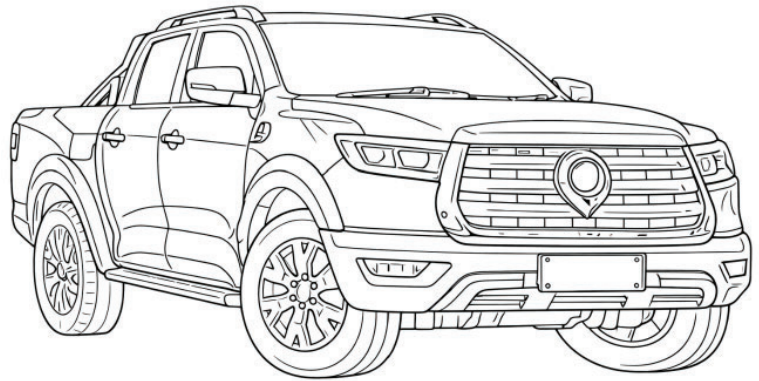


VEHICLE: GWM Cannon
PART NUMBER: 126104

TOWRITE
TOWBARS AUSTRALIA

TOWBAR FITTING INSTRUCTIONS



For Trailer Towing Only

Approximate Installation Time: 1.5 hrs

Maximum Towing Capacity Braked: 3500 kg

Maximum Down Ball Weight: 350 kg

Vehicles towing capacity may vary refer to owners handbook

TowRite Towbars Australia
9 Deakin Street
Brendale Qld 4500
AUSTRALIA
1800 869 748

WARNING

- This product is designed solely for towing and must be loaded exactly as outlined in your vehicle's Owner's Manual.
- Do NOT drill, cut, weld, or modify this towbar under any circumstances.
- Before drilling, check behind the chassis rail and body panels to ensure there are no hazards present.
- The stated load ratings apply only where the trailer is equipped with a properly functioning braking system.
- If installed in any position other than what is shown in these instructions, the Tow Ball Mount may interfere with or obstruct certain vehicle features (such as tailgate operation or chassis clearance).

GENERAL

- Before installing this towbar, read the fitting instructions thoroughly and ensure all hardware is correct.
- Confirm the towbar is compatible with your vehicle, and consider any modifications or accessories (tray, canopy, suspension, etc.) that may affect installation.
- After drilling, clear away all metal filings, remove burrs, and apply a rust inhibitor to any exposed metal surfaces.
- The supplied high-tensile fasteners are essential to achieving the specified rating. If replacements are needed, ensure they are of the same class (8.8) and quality.
- Check towball is tight before towing.
- Check all fasteners routinely and regularly.
- Be aware of changes in vehicle shape and bumper designs as well as any accessories that may alter the installation of this product.
- Bumper cut instructions are a guide only, ensure correct area is marked out prior to cutting.
- TowRite advises the removal of the ball mount when not in use to provide a clear view of the vehicle's registration plate if obscured.
- These instructions are provided as a guide only. TowRite accepts no responsibility for any changes to vehicle or fitment.
- It is recommended that installation is carried out by a trained professional.

Ensure that all lights and systems are functioning properly and visually inspect the vehicle for any damage before commencing work.

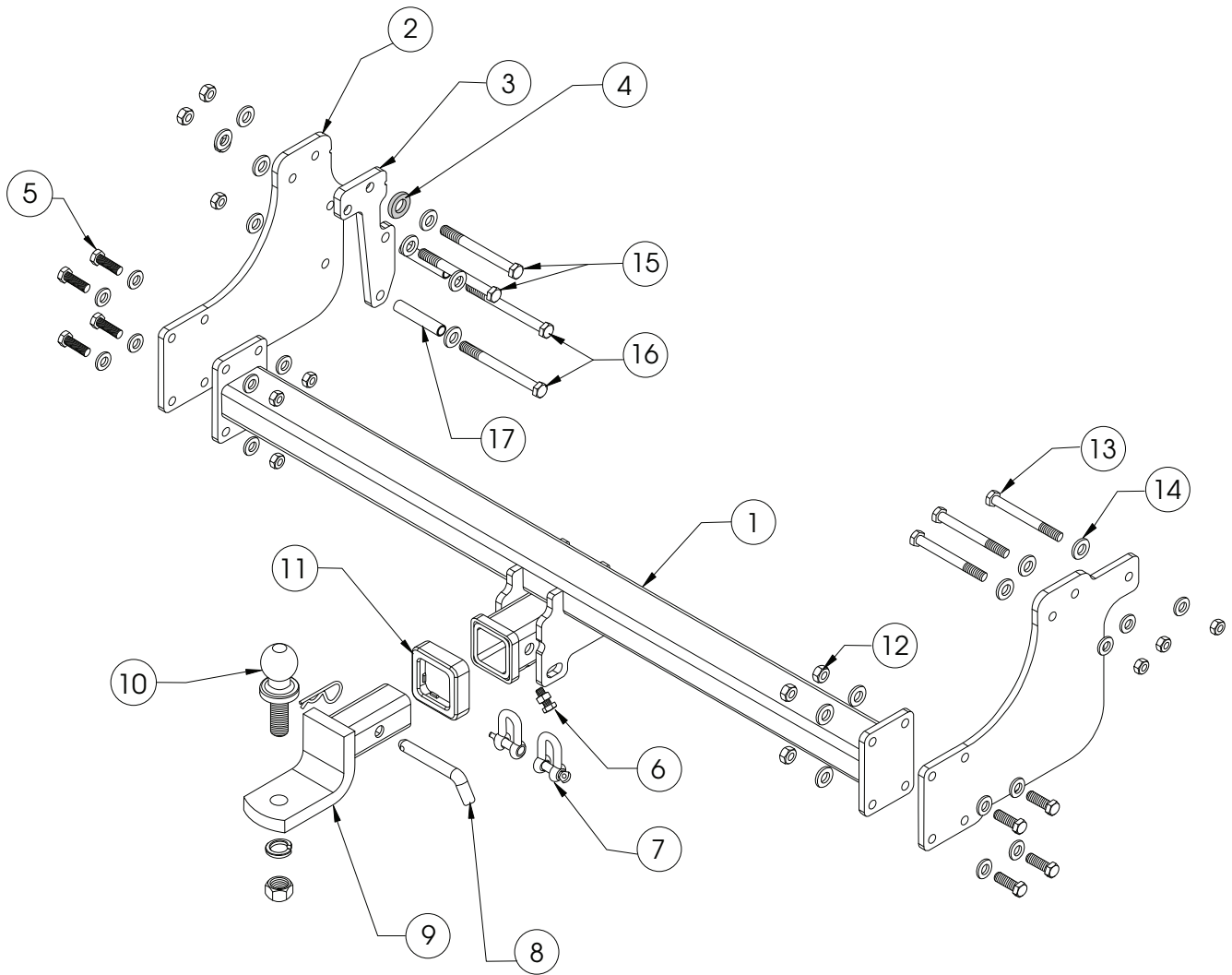
Towbar comes with 2 x compliance labels.

These are to be placed on the towbar and the driver's side door well.

Torque Settings 8.8 Grade High Tensile Bolts

Bolt Size	Torque
M8	22 Nm \pm 10%
M10	46 Nm \pm 10%
M12	77 Nm \pm 10%
M14	146 Nm \pm 10%
M16	190 Nm \pm 10%
Tow Ball	350 Nm \pm 10%

CONTENTS



ITEM NO.	PART DESCRIPTION	QTY
1	TOWBAR ASSEMBLY	1
2	SIDE PLATE ASSEMBLY	2
3	LEFT SPACER PLATE	1
4	LEFT SPACER	1
5	M12 X 1.75 X 40 mm BOLT	8
6	ANTI RATTLE NUT & BOLT	1
7	D SHACKLE	2
8	HITCH PIN & CLIP	1
9	TB00 BALLMOUNT	1
10	50 mm TOWBALL	1
11	PLASTIC SHROUD	1
12	M12 X 1.75 mm NUT	15
13	M12 X 1.75 mm X 120 mm BOLT	3
14	M12 X 4 mm FLAT WASHER	30
15	M12 X 1.75 mm X 130 mm BOLT	2
16	M12 X 1.75 mm X 140 mm BOLT	2
17	CRUSH TUBE	2

TOWBAR INSTALLATION

1

Lower spare wheel and remove for easier access.

On the LHS chassis rail.

Remove and discard 2 x bolts and 2 x nuts from the chassis.

Note: The bumper will remain bolted in the vehicle throughout the fitment.

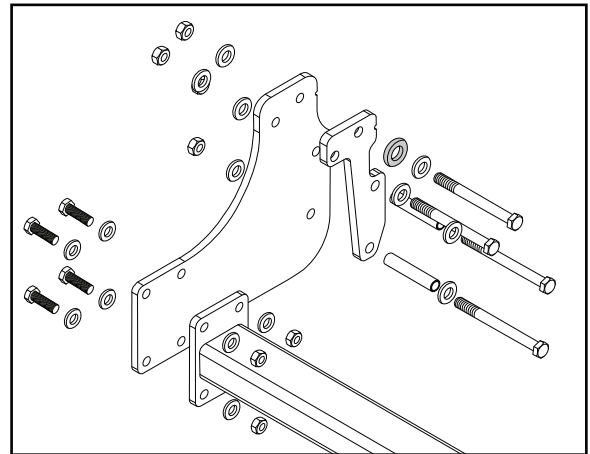
2

On the LHS.

Fit the 1 x left spacer (4), 1 x left spacer plate (3) and a side arm to the chassis rail. Loosely secure with 2 x M12 bolts (15), 4 x washer (14) and 2 x nuts.

Insert 2 x crush tubes (17) in the chassis holes.

Loosely secure with 2 x M12 bolts (15), 4 x washer (14) and 2 x nuts (12).

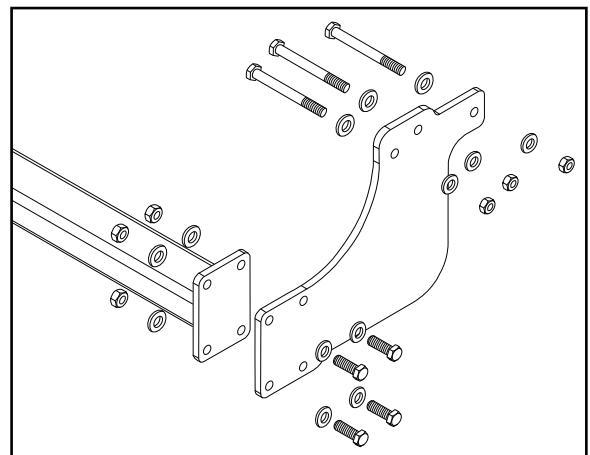


3

On the RHS.

Remove and discard 3x bolts and 3 x nuts.

Fit the side arm to the chassis and loosely secure to 3 x M12 bolts (13), 6 x washers (14) and 3 x nuts (12).



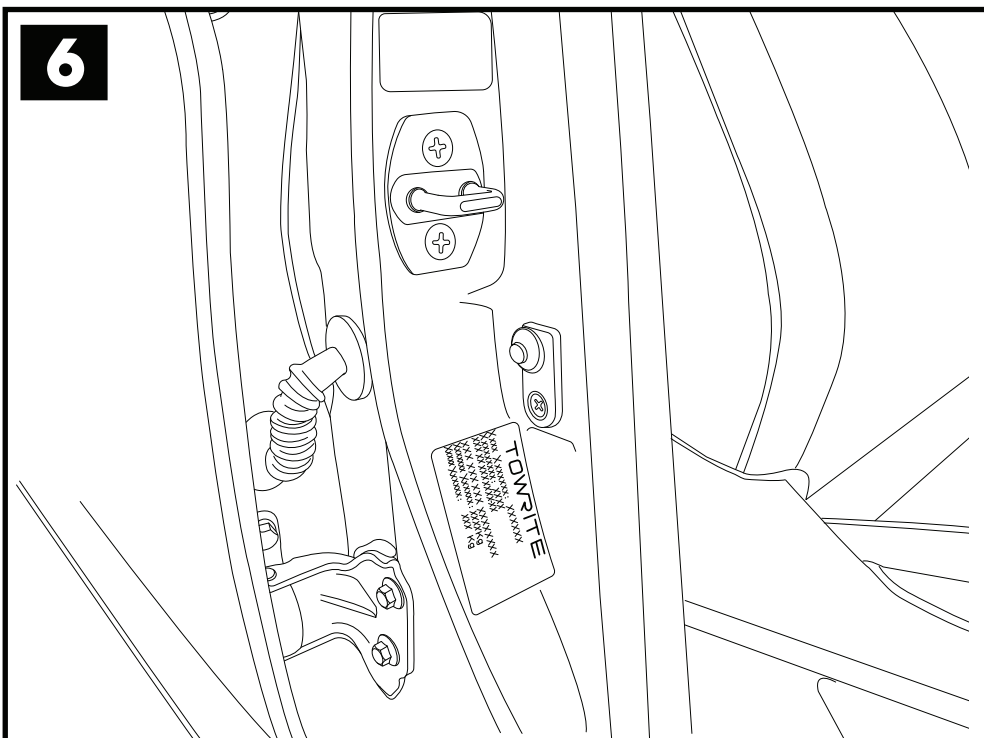
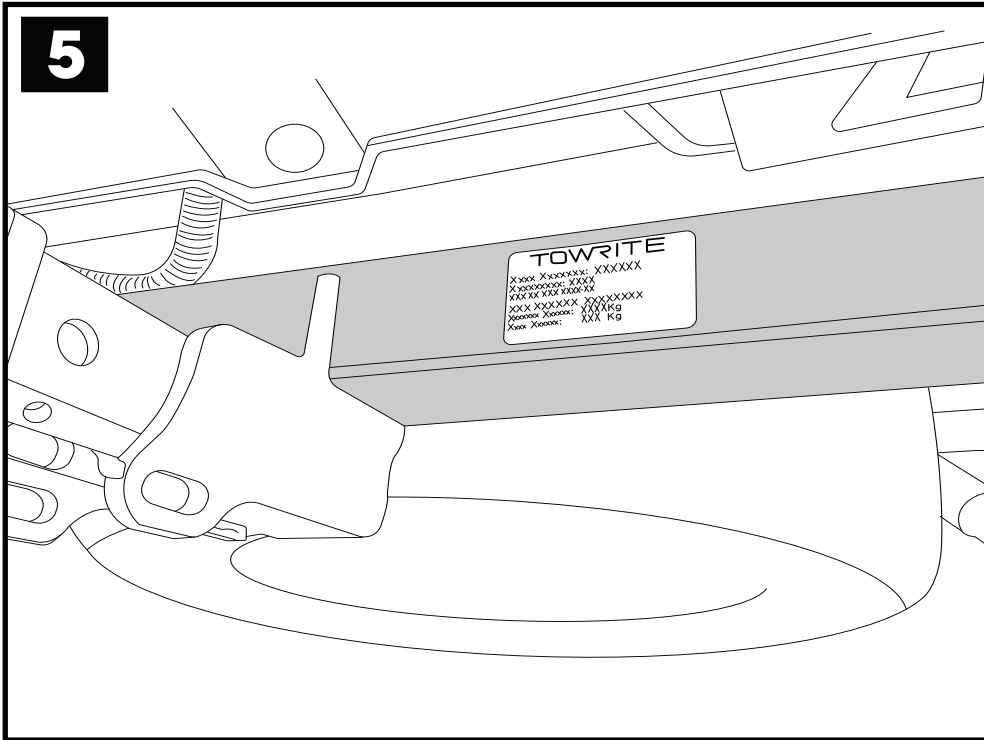
4

Fit the cross tube between the side arms and loosely fit 3 x M12 bolts (5), 6 x washers (14) and 3 x nuts (12) on each side arm.

WIRING INSTALLATION

LABEL INSTALLATION

- CLEAN SURFACES.
- Attach 1 x rating label on the towbar and the second on the drivers side door well.



Maintenance and Care

Here are some maintenance and care tips to allow for trouble free operation of your towbar for years to come.

- A) TowRite recommend removal of the ball mount/tongue when not in use.
- B) Check all fasteners regularly and tighten if necessary. If any fasteners are worn or damaged use the same grade replacements.
- C) Ensure towing and down ball weights do not exceed manufacturers specifications (this may differ between vehicles - check owners handbook). This is the driver's responsibility.
- D) Use a spray lubricant on contacts for wiring connections as well as removable and insert able parts regularly (ie. Trailer plug and ball mount and pin and clip).
- E) Check towball for wear and tear regularly, ensure towball is correctly fastened and torqued before towing.

WARRANTY INFORMATION

Your towbar comes with a limited lifetime warranty covered nationwide. For warranty information please visit www.towritetowbars.com.au or call us on 1800 869 748



**TowRite Towbars Australia
9 Deakin Street
Brendale Qld 4500
AUSTRALIA
1800 869 748**

info@towritetowbars.com.au
www.towritetowbars.com.au