

**HAYMAN REESE**  
**PART No: 03222RW**  
**VOLVO XC60 UZ CL4**

## **INSTALLATION INSTRUCTIONS**

PLEASE ENSURE THAT INSTRUCTIONS ARE UNDERSTOOD PRIOR TO FITMENT  
PLACE THESE INSTRUCTIONS IN THE VEHICLE'S GLOVEBOX AFTER INSTALLATION IS COMPLETED



**Installation Time: Approx 90 Mins**

### **Towbar Installation Instructions**

### **Towbar capacity**

**VOLVO XC60 UZ CL4**

**Part Number 03222RW**

<b>Max Towing Braked</b>	<b>2400 kg</b>
<b>Max Towing Unbraked</b>	<b>750 kg</b>
<b>Max Static Ball Load</b>	<b>240 kg</b>

Hayman Reese (Cequent)  
PO Box 4050, Dandenong South VIC 3164  
Phone 1800 812 017 Email [info@haymanreese.com.au](mailto:info@haymanreese.com.au)

[www.haymanreese.com.au](http://www.haymanreese.com.au)



**HAYMAN REESE**  
**PART No: 03222RW**  
**VOLVO XC60 UZ CL4**

## **INSTALLATION INSTRUCTIONS**

**PLEASE ENSURE THAT INSTRUCTIONS ARE UNDERSTOOD PRIOR TO FITMENT**  
**PLACE THESE INSTRUCTIONS IN THE VEHICLE'S GLOVEBOX AFTER INSTALLATION IS COMPLETED**

### **Warning:**

1. Do not, drill, cut, weld or otherwise modify the towbar.
2. If you are using electric welding on a motor vehicle, **always** check that the vehicle is not equipped with electronic engine or instrument management equipment. Failure to do so could **destroy** any on board computers. If in doubt, check with the vehicle's manufacturer.
3. If TBM is used in inverted position tow ball may make contact with rear tailgate when lowered, which could cause damage.

### **General:**

1. Ensure all hardware items have been included refer to assembly diagram.
2. It is recommended that the instructions are read through and completely understood before making any attempt to fit this product.
3. Be wary of any changes to vehicle designs or other accessories that may conflict with the installation of this product.
4. Before drilling ensure that the area is clear of fuel, electrical & other components.
5. All holes drilled into the body panels shall have all burrs & swarf removed then coated with a suitable rust preventative paint.
6. The high tensile fasteners supplied with this product were used to achieve the specified rating. If replacement is required ensure that fasteners of the same rating & quality are used. Contact an authorised **Hayman Reese** dealer if further information is required.
7. Towbar load rating sticker provided with this product shall be conspicuously located on inside rear end of the driver's door. **(See diagram below).**
8. Hayman Reese recommends that you check your tow ball to ensure that it complies with the Australian standards **AS 4177.2**.
9. **PLEASE NOTE:** It is advised to remove your LUG or TBM when not actually towing so as to produce a clear view of the vehicles registration plate if obscured, and to also provide maximum available departure angle.

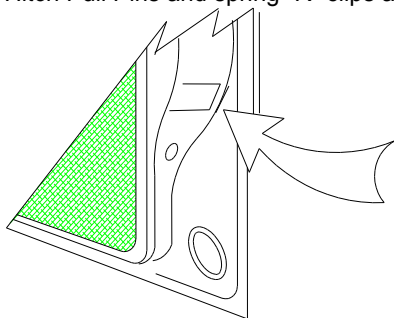
### **Tow bar Maintenance and Care.**

Hayman Reese recommends that bolt torque's, as listed below, are routinely and regularly inspected and checked for correct tension. Replace any worn or defective parts.

We recommended to remove Tow Ball Mounts (TBM's, tongues or lugs) when not being used for any considerable length of time.

So as to avoid injury, when not towing it is suggested that the tongue, Pull Pin and R-clip are removed then stored in a safe, clean and dry place, away from excessive moisture.

Hitch Pull Pins and spring "R" clips are regularly checked for proper installation. Replace any worn or defective parts.



**Place load rating sticker  
inside driver's door here**

#### **FOR TOWING PURPOSES ONLY**

**For towing capacity details please refer to vehicle  
owner's manual or to the manufacturer. Overloading can  
void your warranties.**

Hayman Reese (Cequent)  
PO Box 4050, Dandenong South VIC 3164  
Phone 1800 812 017 Email [info@haymanreese.com.au](mailto:info@haymanreese.com.au)

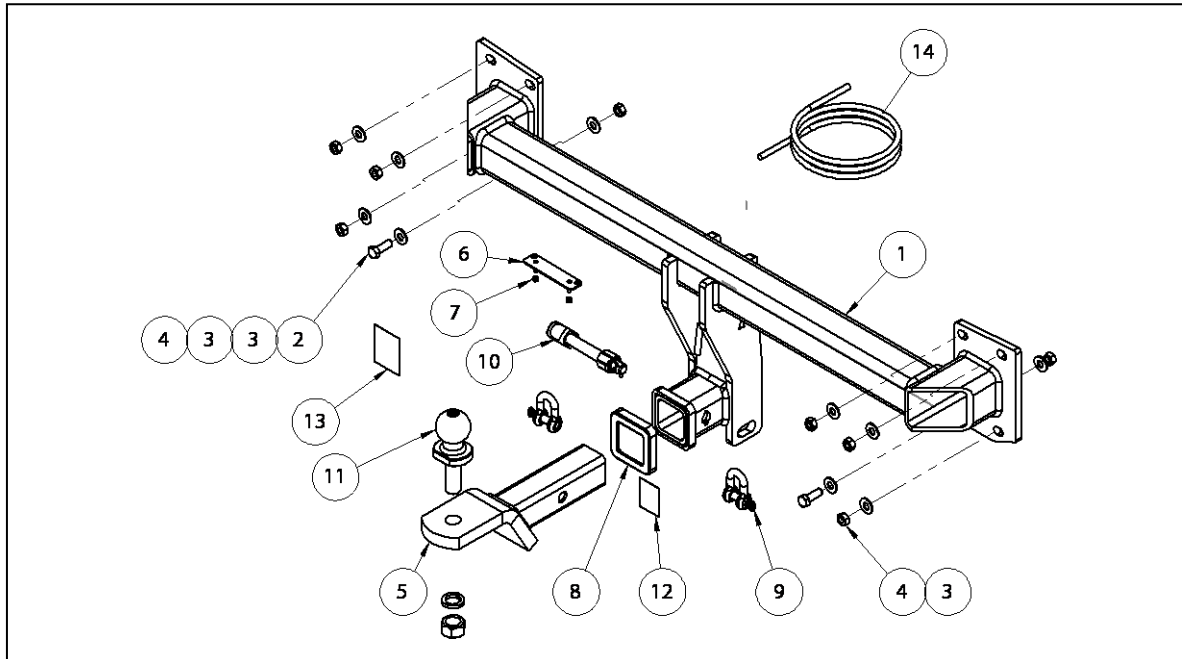
[www.haymanreese.com.au](http://www.haymanreese.com.au)



**HAYMAN REESE**  
**PART No: 03222RW**  
**VOLVO XC60 UZ CL4**

## **INSTALLATION INSTRUCTIONS**

PLEASE ENSURE THAT INSTRUCTIONS ARE UNDERSTOOD PRIOR TO FITMENT  
PLACE THESE INSTRUCTIONS IN THE VEHICLE'S GLOVEBOX AFTER INSTALLATION IS COMPLETED



ITEM NO.	DESCRIPTION	QTY.
1	VOLVO XC60 UZ CL4 WELDED ASSY	1
2	BOLT M10x30 1.5P GR10.9	2
3	WASHER FLAT M10x23x2 Z/P	10
4	HEX NUT M10x1.5	8
5	CLASS 4 TBM	1
6	PLUG BRACKET	1
7	NUT NYLOC M4-0.7 Z/P	2
8	HITCH BOX COLLAR COVER	1
9	10mm "D" SHACKLE	2
10	ANTI-RATTLE PULL PIN ASSY GOLD	1
11	H.R STICKER	1
12	HR TOWBALL	1
13	ACRYLIC COMPLIANCE PLATE	1
14	WIRING LOOM	1

Hayman Reese (Cequent)  
PO Box 4050, Dandenong South VIC 3164  
Phone 1800 812 017 Email [info@haymanreese.com.au](mailto:info@haymanreese.com.au)

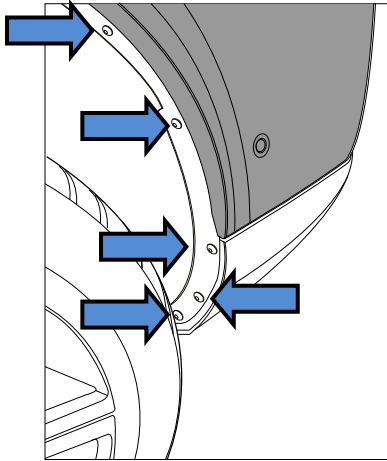
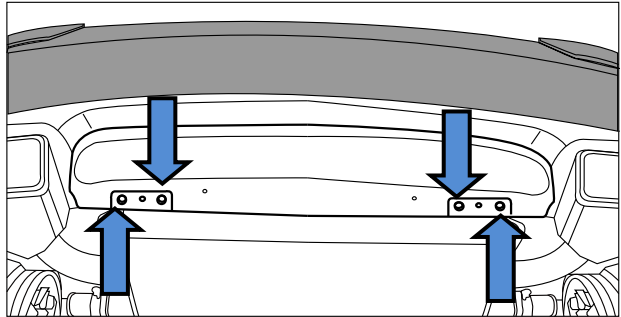
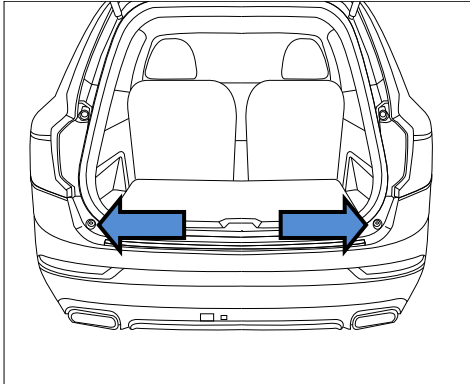
[www.haymanreese.com.au](http://www.haymanreese.com.au)



**HAYMAN REESE**  
**PART No: 03222RW**  
**VOLVO XC60 UZ CL4**

## **INSTALLATION INSTRUCTIONS**

**PLEASE ENSURE THAT INSTRUCTIONS ARE UNDERSTOOD PRIOR TO FITMENT**  
**PLACE THESE INSTRUCTIONS IN THE VEHICLE'S GLOVEBOX AFTER INSTALLATION IS COMPLETED**

<p>1. Remove the 5 x Torx screws in the rear wheel arch.</p> <p>Remove 1 x Torx screw from behind the inner guard fabric at top corner of bumper.</p> <p>Repeat for the opposite side of the vehicle.</p>	
<p>2. Remove the 4 x Torx screws securing the bumper and heat shield to the vehicle.</p>	
<p>3. Remove the 2 x plastic stoppers in the boot cavity.</p>	

Hayman Reese (Cequent)  
PO Box 4050, Dandenong South VIC 3164  
Phone 1800 812 017 Email [info@haymanreese.com.au](mailto:info@haymanreese.com.au)

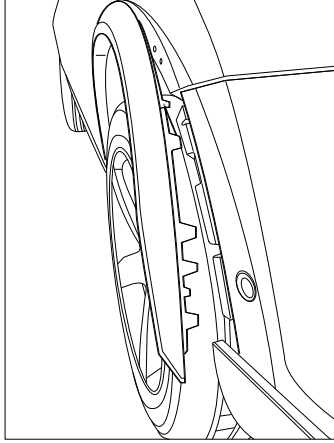
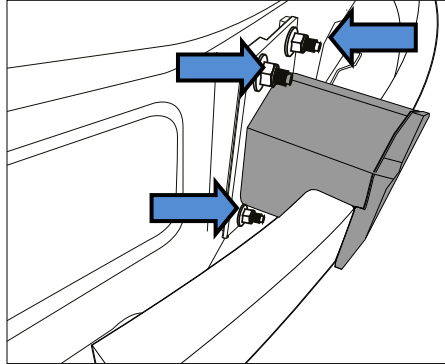
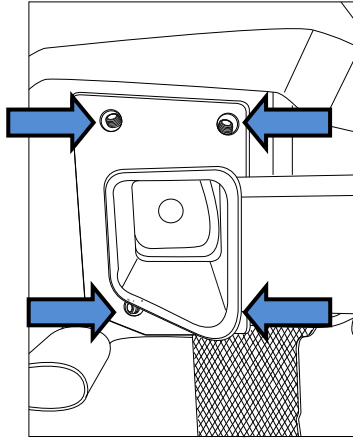
[www.haymanreese.com.au](http://www.haymanreese.com.au)



**HAYMAN REESE**  
**PART No: 03222RW**  
**VOLVO XC60 UZ CL4**

## INSTALLATION INSTRUCTIONS

PLEASE ENSURE THAT INSTRUCTIONS ARE UNDERSTOOD PRIOR TO FITMENT  
PLACE THESE INSTRUCTIONS IN THE VEHICLE'S GLOVEBOX AFTER INSTALLATION IS COMPLETED

<p>4. Carefully unclip and remove bumper and disconnect wiring harness at connector.</p>	
<p>5. Remove and discard the 3 x flanged nuts securing the rear impact beam to the vehicle.</p> <p>Repeat for the opposite side of the vehicle.</p> <p>6. Remove and discard the rear impact beam.</p> <p>7. Remove exhaust mounts to remove the heat shield underneath the vehicle.</p>	
<p>8. Lift towbar to rear panel of vehicle. Secure towbar with 6 x M10 nuts complete with 1x washer per stud.</p> <p>Also fit the 2 x M10 bolts complete with 1 x washers per bolt.</p> <p><b>Tighten all fasteners to 70Nm.</b></p>	

Hayman Reese (Cequent)  
PO Box 4050, Dandenong South VIC 3164  
Phone 1800 812 017 Email [info@haymanreese.com.au](mailto:info@haymanreese.com.au)

[www.haymanreese.com.au](http://www.haymanreese.com.au)



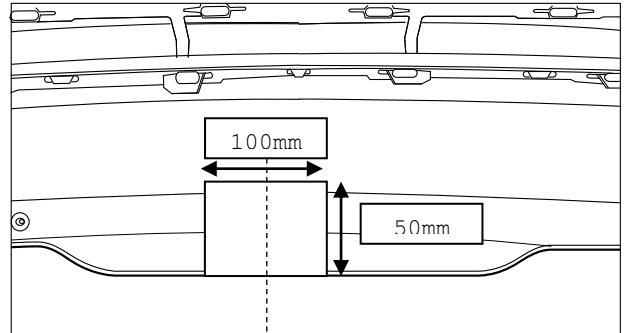
**HAYMAN REESE**  
**PART No: 03222RW**  
**VOLVO XC60 UZ CL4**

## **INSTALLATION INSTRUCTIONS**

**PLEASE ENSURE THAT INSTRUCTIONS ARE UNDERSTOOD PRIOR TO FITMENT**  
**PLACE THESE INSTRUCTIONS IN THE VEHICLE'S GLOVEBOX AFTER INSTALLATION IS COMPLETED**

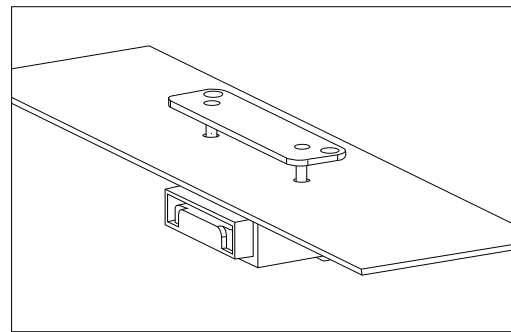
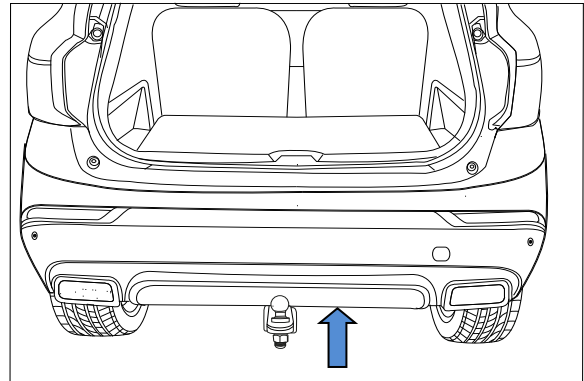
9. Identify centreline of bumper and create cut, 100mm wide and 50 mm long, as measured on the inside of the bumper from the bottom edge.

Make a corresponding cut on the heat shield removed in Step 7.



10. Find a suitable position on the bumper for the plug bracket.  
Mark out and drill 2x ø5mm holes 69mm apart on bumper skin to support plug bracket. Feed bracket threads through drilled holes prior to reinstalling bumper.

11. Reinstall bumper bar assembly by following steps 1 to 5 in reverse order.



Hayman Reese (Cequent)  
PO Box 4050, Dandenong South VIC 3164  
Phone 1800 812 017 Email [info@haymanreese.com.au](mailto:info@haymanreese.com.au)

[www.haymanreese.com.au](http://www.haymanreese.com.au)



**HAYMAN REESE**

**PART No: 04910-WL**

**VOLVO XC60**

## **INSTALLATION INSTRUCTIONS**

**PLEASE ENSURE THAT INSTRUCTIONS ARE UNDERSTOOD PRIOR TO FITMENT**

### **Wiring Loom Installation Instructions**

**VOLVO XC60**

**Part No: 04910-WL**

**ECU: 04836**

**Tail Length: 1800mm**

**RPA Disable Kit: 04848**

**Electric brake input location: BLUE wire near ECU connector**

**Wiring Loom Installation Time: Approx. 45 minutes**

**Issue Date 24-04-18**

**Page 1**

**Part No: 04910-WL**

**Hayman Reese (Cequent)**

**PO Box 4050, Dandenong South VIC 3164**

**Phone 1800 812 017 Email [info@haymanreese.com.au](mailto:info@haymanreese.com.au)**

[www.haymanreese.com.au](http://www.haymanreese.com.au)

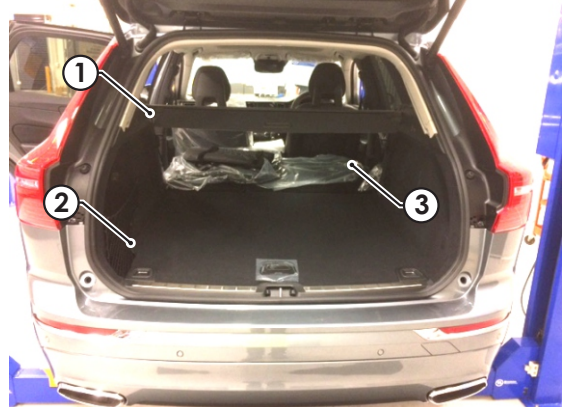


**HAYMAN REESE**  
**PART No: 04910-WL**  
**VOLVO XC60**

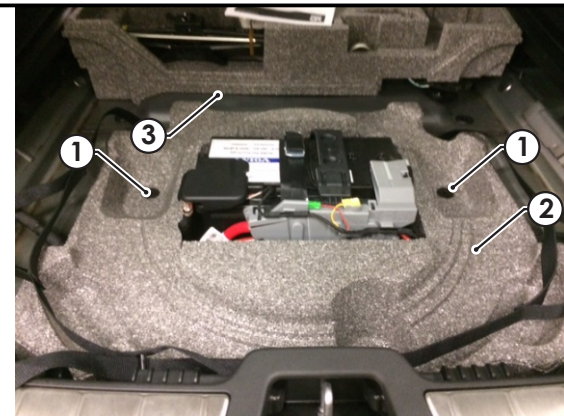
## INSTALLATION INSTRUCTIONS

PLEASE ENSURE THAT INSTRUCTIONS ARE UNDERSTOOD PRIOR TO FITMENT

1. In the luggage compartment, remove the rear sunshade (1).
2. Remove the floor cover carpet (2).
3. Fold the rear seats (3) forward.
4. Remove the wheel straps.
5. Remove the spare wheel.

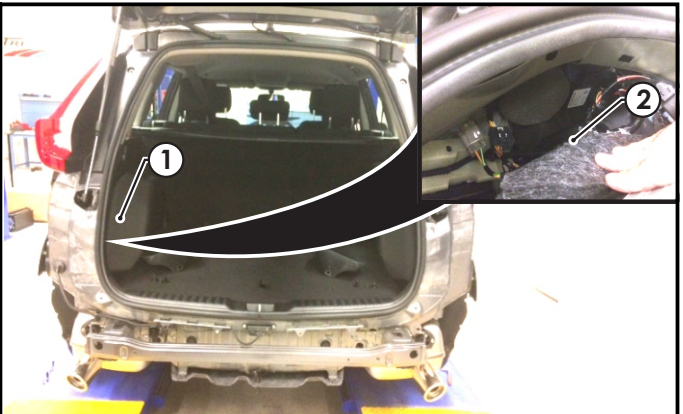


6. Release the plastic screws (1).
7. Remove the spare wheel bracket (2) & toolbox bracket (3).
8. Disconnect negative battery terminal.
9. Release the 2 fasteners on the rear trim.
10. Remove the rear trim.



11. Dislodge the RHS Luggage compartment trim (1).
12. Remove the Round Circular Foam protector (2).

**Repeat for LHS.**



Issue Date 24-04-18

Page 2

Part No: 04910-WL

Hayman Reese (Cequent)  
PO Box 4050, Dandenong South VIC 3164  
Phone 1800 812 017 Email [info@haymanreese.com.au](mailto:info@haymanreese.com.au)

[www.haymanreese.com.au](http://www.haymanreese.com.au)



# HAYMAN REESE

PART No: 04910-WL

VOLVO XC60

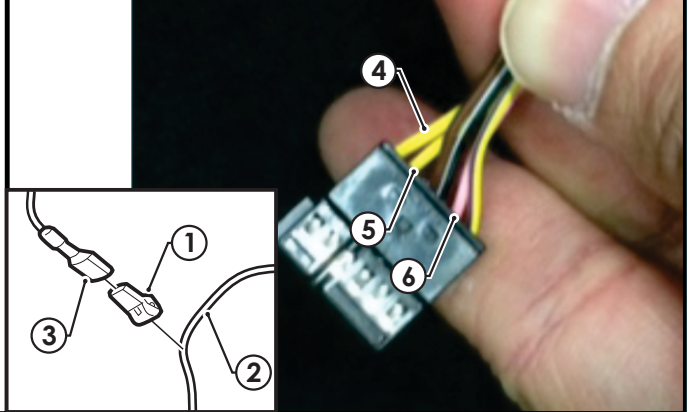
## INSTALLATION INSTRUCTIONS

PLEASE ENSURE THAT INSTRUCTIONS ARE UNDERSTOOD PRIOR TO FITMENT

13. On the LHS locate the vehicle tail light connector. Following the table below, connect the ezy-taps (1) to the mating tail light harness wires (2). Then connect the trailer patch wires (3) to the correct ezy-taps (1).

Function	Trailer Patch	Vehicle Harness
Left Indicator	YELLOW/BLACK	4
Brake/Tail	BROWN/BLACK	5
Brake	RED/BLACK	6

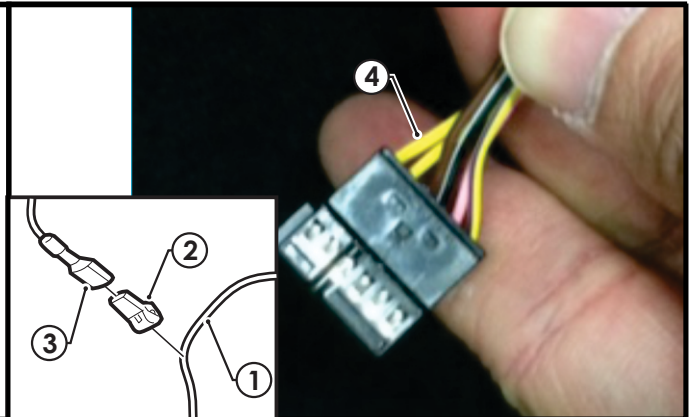
**Note: Test the vehicle wires first to confirm the functions.**



14. On the RHS, locate the vehicle tail light connector. Following the table below, connect the ezy-tap (2) to the mating tail light harness wire (1). Then connect the trailer patch wire (3) to the ezy-tap (2).

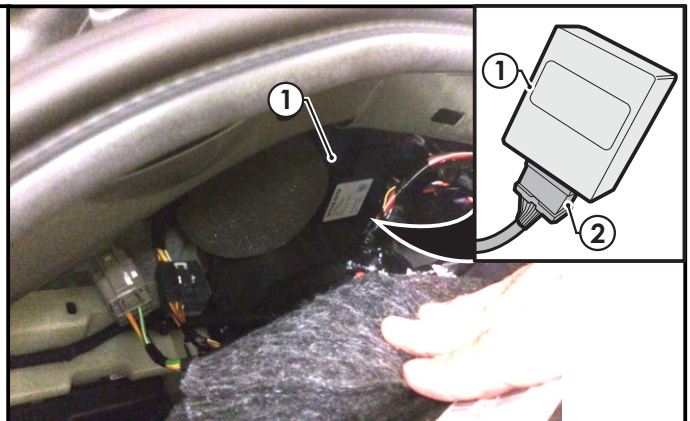
Function	Trailer Patch	Vehicle Harness
Right Indicator	GREEN/BLACK	4

**Note: Test the vehicle wires first to confirm the functions.**



15. Mount the ECU (04836) (1) onto the flat area below the circular Foam Protector with the connector facing downward.

16. Connect the TWH (2) to the TWHECU (1).



Issue Date 24-04-18

Page 3

Part No: 04910-WL

Hayman Reese (Cequent)

PO Box 4050, Dandenong South VIC 3164

Phone 1800 812 017 Email [info@haymanreese.com.au](mailto:info@haymanreese.com.au)

[www.haymanreese.com.au](http://www.haymanreese.com.au)



# HAYMAN REESE

PART No: 04910-WL

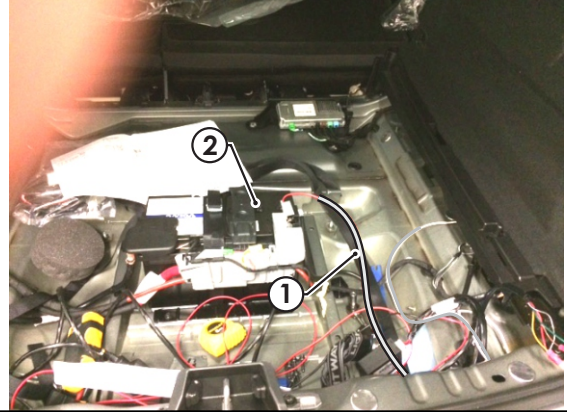
VOLVO XC60

## INSTALLATION INSTRUCTIONS

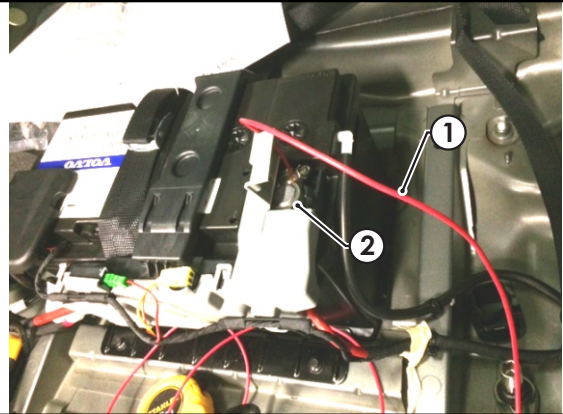
PLEASE ENSURE THAT INSTRUCTIONS ARE UNDERSTOOD PRIOR TO FITMENT

17. Route the Red wire (1) towards the battery (2), cut to length and crimp the red fuse wire to the red power wire using the quick connect terminal.

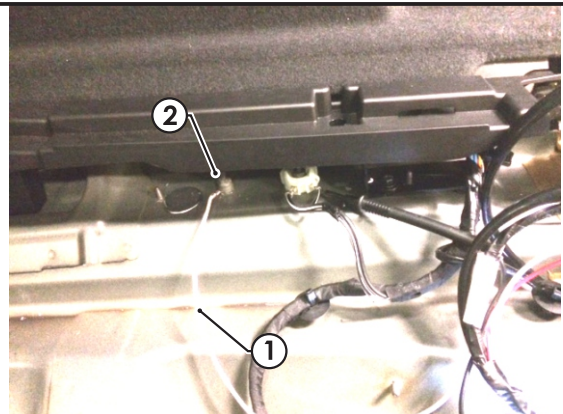
18. Fit supplied 20A fuse into the fuse holder



19. Connect Red Ø6mm terminal (1) to the Battery Positive (2).



20. Connect Black Ø6mm terminal (1) to the Ground Stud (2).



Issue Date 24-04-18

Page 4

Part No: 04910-WL

Hayman Reese (Cequent)

PO Box 4050, Dandenong South VIC 3164

Phone 1800 812 017 Email [info@haymanreese.com.au](mailto:info@haymanreese.com.au)

[www.haymanreese.com.au](http://www.haymanreese.com.au)



# HAYMAN REESE

PART No: 04910-WL

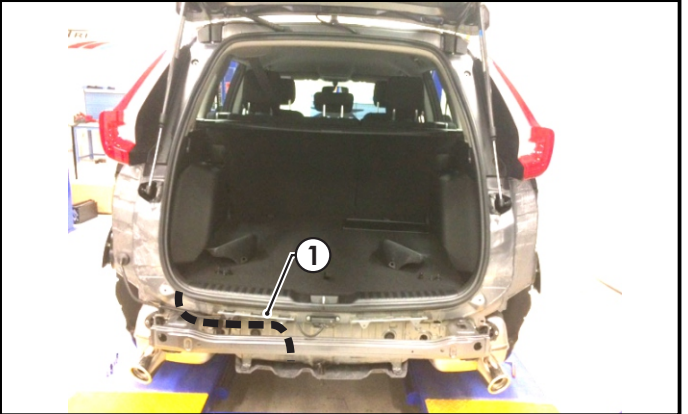
VOLVO XC60

## INSTALLATION INSTRUCTIONS

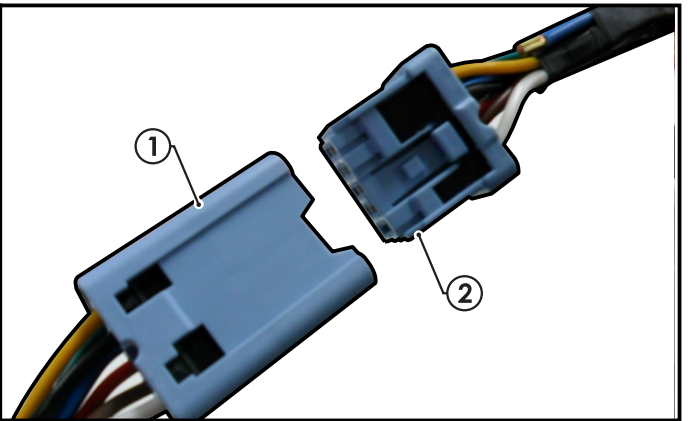
PLEASE ENSURE THAT INSTRUCTIONS ARE UNDERSTOOD PRIOR TO FITMENT

21. Using a step drill, drill a 30mm hole on the LHS boot floor.
22. Route the Blue connector towards the hole drilled in previous step.
23. At the rear of the vehicle, secure trailer socket to the towbar.
24. Route the tail harness (tail length 1800mm) up to and through the previously drilled hole.

**Note: ensure the grommet is seated correctly and makes a good seal.**



25. Connect the tail harness 8-way connector (1) to the trailer patch mating 8-way connector (2).
26. Apply silicone grease to waterproof connector.



27. Test the trailer patch function using a light board or multi-meter.
28. Secure all harness using cable ties (not supplied).
29. Re-fit all removed parts and secure all fasteners, ensuring there are no squeaks or rattles.
30. Place the fitting instructions in the glove box after fitment.

Issue Date 24-04-18

Page 5

Part No: 04910-WL

Hayman Reese (Cequent)

PO Box 4050, Dandenong South VIC 3164

Phone 1800 812 017 Email [info@haymanreese.com.au](mailto:info@haymanreese.com.au)

[www.haymanreese.com.au](http://www.haymanreese.com.au)





# FITTING INSTRUCTIONS

## Smart Pin (55070BL)

• These fitting instructions are supplied to ensure understanding of how the SMART PIN should be fitted and used correctly.

• Once installed, we recommend **ALL** instructions are kept and placed in the vehicle glove box.

**NOTE: Routine maintenance and inspection of the towbar & SMART PIN is required. Regularly inspect for wear and check the tightness of the SMART PIN NUT. Follow instructions below to retighten the nut when necessary.**

**\*Do not tow with your vehicle if the R CLIP or the SMART PIN NUT is loose or missing. Replacement parts are available from your Hayman Reese Distributor.**

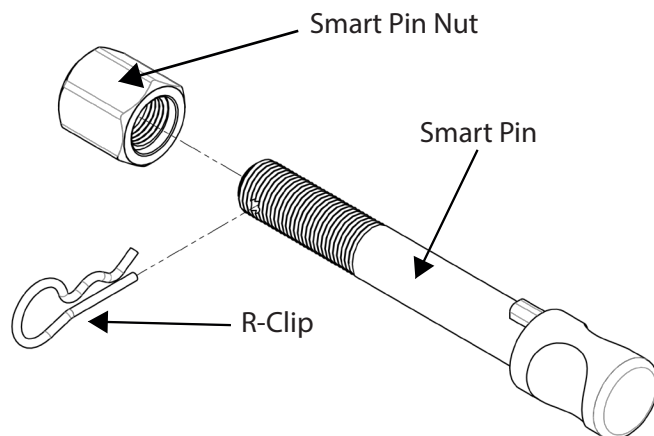


Fig 1. Smart Pin assembly

### STEP 1

Insert Trailer Ball Mount (TBM) into towbar HITCHBOX, aligning hole in TBM SHANK with hole in HITCHBOX (Fig. 2).

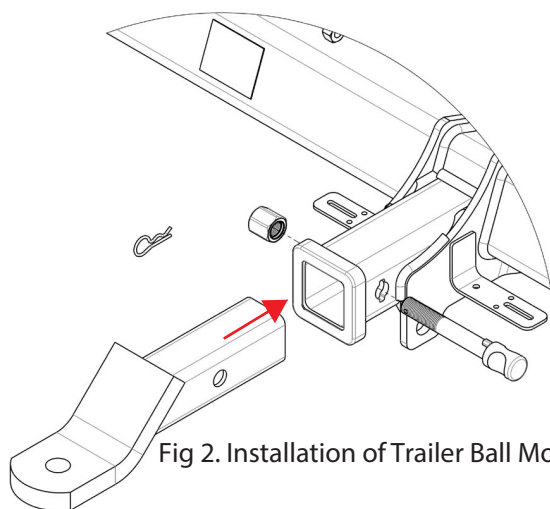


Fig 2. Installation of Trailer Ball Mount

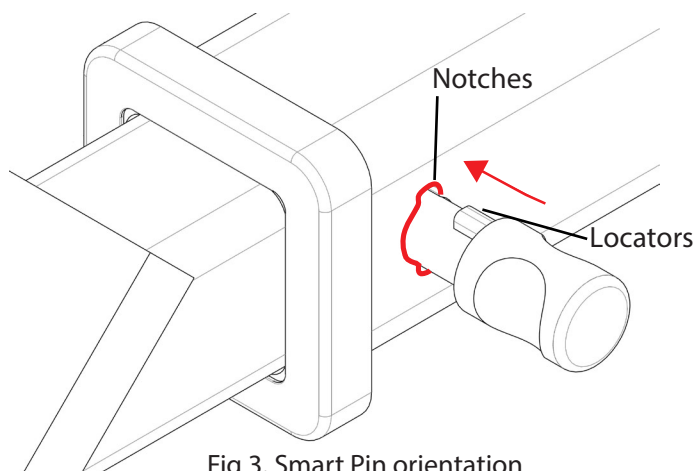


Fig 3. Smart Pin orientation

### STEP 2

Insert SMART PIN through hole in HITCHBOX and hole in TBM SHANK; ensure the LOCATORS are inserted into the NOTCHES in the HITCHBOX (Fig. 3).

### STEP 3

Screw SMART PIN NUT onto SMART PIN; tighten SMART PIN NUT until finger tight, ensuring TBM is restrained from movement.

### STEP 4

Tighten SMART PIN NUT by turning nut a further 1/8th of a turn in the clockwise direction using a 24mm spanner (Fig 4).

### STEP 5

Install SMART PIN R CLIP through the hole on the SMART PIN (Fig. 1).

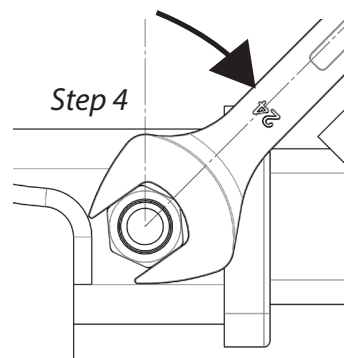


Fig 4. Tightening of Smart Pin Nut