

HAYMAN REESE
PART No: 03144RW
JEEP GRAND CHEROKEE WK SERIES 07/2014 ONWARDS
INSTALLATION INSTRUCTIONS

PLEASE ENSURE THAT ALL INSTRUCTIONS ARE UNDERSTOOD PRIOR TO FITMENT
PLACE THESE INSTRUCTIONS IN THE VEHICLE'S GLOVEBOX AFTER INSTALLATION IS COMPLETED



Installation Time: Approx **60** Mins

Towbar Installation Instructions

Towbar capacity

JEEP GRAND CHEROKEE WK SERIES 07/2014 ONWARDS

Part Number 03144RW	Max Towing Braked	3500 kg
	Max Towing Unbraked	750 kg
	Max Static Ball Load	350 kg

Hayman Reese (Cequent)
PO Box 4050, Dandenong South VIC 3164
Phone 1800 812 017 Email info@haymanreese.com.au

HAYMAN REESE
PART No: 03144RW
JEEP GRAND CHEROKEE WK SERIES 07/2014 ONWARDS

INSTALLATION INSTRUCTIONS

PLEASE ENSURE THAT ALL INSTRUCTIONS ARE UNDERSTOOD PRIOR TO FITMENT
PLACE THESE INSTRUCTIONS IN THE VEHICLES'S GLOVEBOX AFTER INSTALLATION IS COMPLETED

Warning:

1. Do not, drill, cut, weld or otherwise modify the towbar.
2. If you are using electric welding on a motor vehicle, **always** check that the vehicle is not equipped with electronic engine or instrument management equipment. Failure to do so could **destroy** any onboard computers. If in doubt, check with the vehicle's manufacturer.
3. If TBM is used in inverted position tow ball may make contact with rear tailgate when lowered, which could cause damage.

General:

1. Ensure all hardware items have been included refer to assembly diagram.
2. It is recommended that the instructions are read through and completely understood before making any attempt to fit this product.
3. Be wary of any changes to vehicle designs or other accessories that may conflict with the installation of this product.
4. Before drilling ensure that the area is clear of fuel, electrical & other components.
5. All holes drilled into the body panels shall have all burrs & swarf removed then coated with a suitable rust preventative paint.
6. The high tensile fasteners supplied with this product were used to achieve the specified rating. If replacement is required ensure that fasteners of the same rating & quality are used. Contact an authorised **Hayman Reese** dealer if further information is required.
7. Ensure that all hardware is fastened to torque list below check fasteners on regular basis.
8. Towbar load rating sticker provided with this product shall be conspicuously located on inside rear end of the driver's door. **(See diagram below).**
9. Hayman Reese recommends that you check your tow ball to ensure that it complies with the Australian standards **AS 4177.2**.
10. **PLEASE NOTE:** It is advised to remove your lug or tbm when not actually towing so as to produce a clear view of the vehicles registration plate if obscured, and to also provide maximum available departure angle.

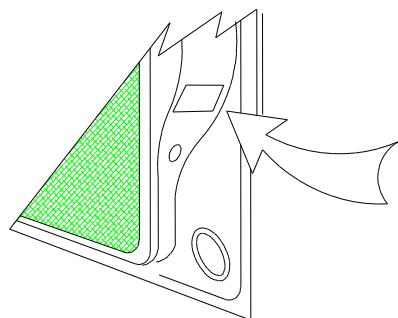
Tow bar Maintenance and Care.

Hayman Reese recommends that bolt torque's, as listed below, are routinely and regularly inspected and checked for correct tension. Replace any worn or defective parts.

We recommended to remove Tow Ball Mounts (TBM's, tongues or lugs) when not being used for any considerable length of time.

So as to avoid injury, when not towing it is suggested that the tongue, Pull Pin and R-clip are removed then stored in a safe, clean and dry place, away from excessive moisture.

Hitch Pull Pins and spring "R" clips are regularly checked for proper installation. Replace any worn or defective parts.



**Place load rating sticker
inside driver's door here**

**RECOMMENDED ASSEMBLY TORQUE
LISTING**

<u>Diameter</u>	<u>Grade 8.8 Bolt</u>
M6	9.5 Nm
M8	21.7 Nm
M10	43.4 Nm
M12	77.3 Nm
M14	146 Nm
M16	189.8 Nm

FOR TOWING PURPOSES ONLY

**For towing capacity details please refer to vehicle
owner's manual or to the manufacturer. Overloading can
void your warranties.**

HAYMAN REESE

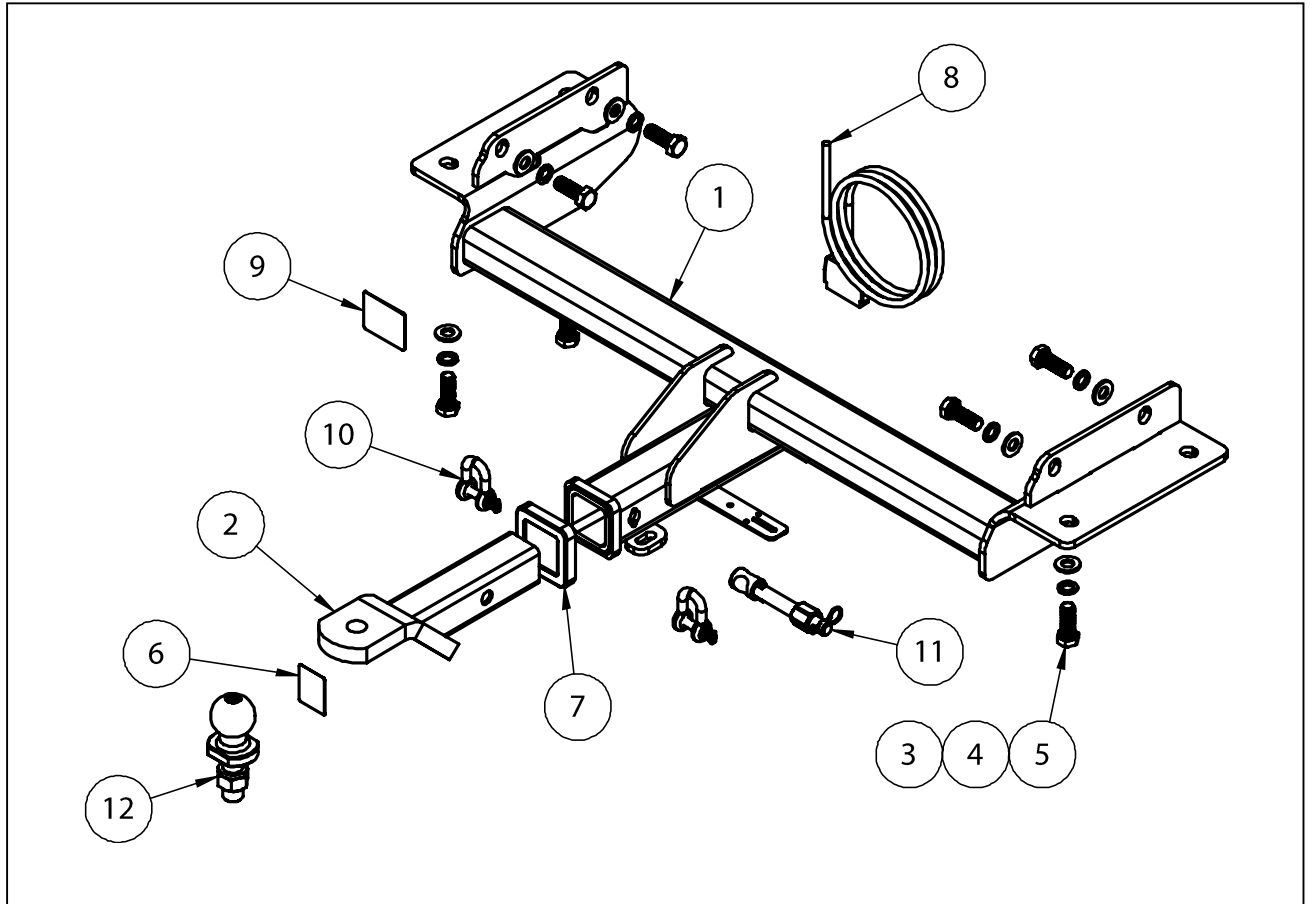
PART No: 03144RW

JEEP GRAND CHEROKEE WK SERIES 07/2014 ONWARDS

INSTALLATION INSTRUCTIONS

PLEASE ENSURE THAT ALL INSTRUCTIONS ARE UNDERSTOOD PRIOR TO FITMENT

PLACE THESE INSTRUCTIONS IN THE VEHICLE'S GLOVEBOX AFTER INSTALLATION IS COMPLETED



QTY.	DESCRIPTION	ITEM NO.
1	WELD ASSMBLY JEEP GRAND CHEROKEE	1
1	T.B.MOUNT	2
7	FT WASHER M14x28x3 Z/P	3
7	SPRING WSHR M14x4.0x2.5 Z/P FT SEC	4
7	SET SCREW, HEX, M14	5
1	H.R STICKER	6
1	HITCH BOX COLLAR COVER	7
1	WIRING LOOM	8
1	ACRYLIC COMPLIANCE PLATE	9
2	10mm "D" SHACKLE	10
1	ANTI-RATTLE PULL PIN ASSY GOLD	11
1	HR TOWBALL	12

HAYMAN REESE

PART No: 03144RW

JEEP GRAND CHEROKEE WK SERIES 07/2014 ONWARDS

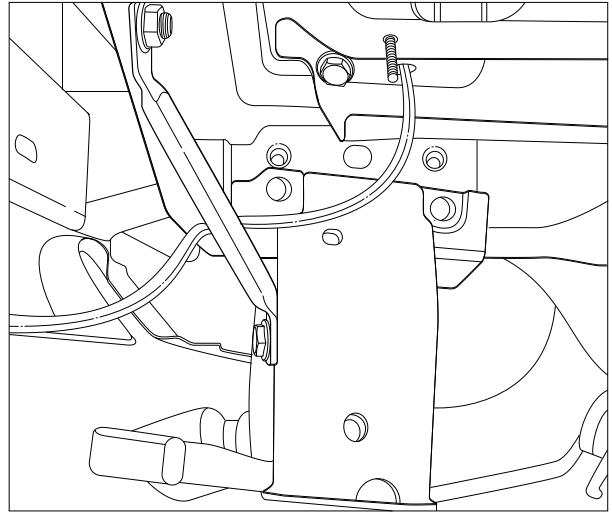
INSTALLATION INSTRUCTIONS

PLEASE ENSURE THAT ALL INSTRUCTIONS ARE UNDERSTOOD PRIOR TO FITMENT

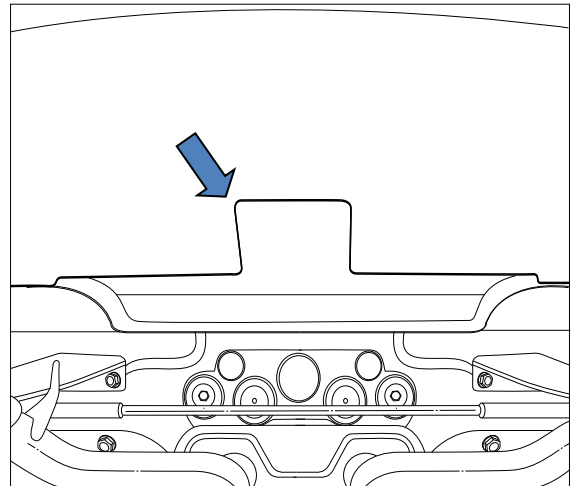
PLACE THESE INSTRUCTIONS IN THE VEHICLE'S GLOVEBOX AFTER INSTALLATION IS COMPLETED

1. On the passenger side remove 5 x Set Screws.
Discard factory shipping hook.

Remove 3x Set screws from the Drivers side attaching to impact beam.



2. Cut 90mm x 90mm section from the bottom edge, centre line of the bumper.

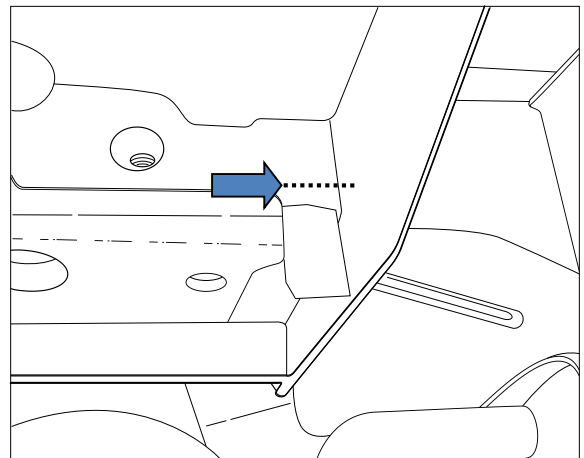


3. Cut or trim off sheet metal along bottom of chassis rails, after cut, bend sheet metal back flush to the rear panel.

Slide Towbar into position. Lowering the exhaust will assist in towbar fitment.

Secure Towbar to vehicle using fasteners provided and torque specifications listed on Page 2.

NOTE: There are only 3 fastening points on Driver side.



HAYMAN REESE

PART No: 03144RW

JEEP GRAND CHEROKEE WK SERIES 07/2014 ONWARDS

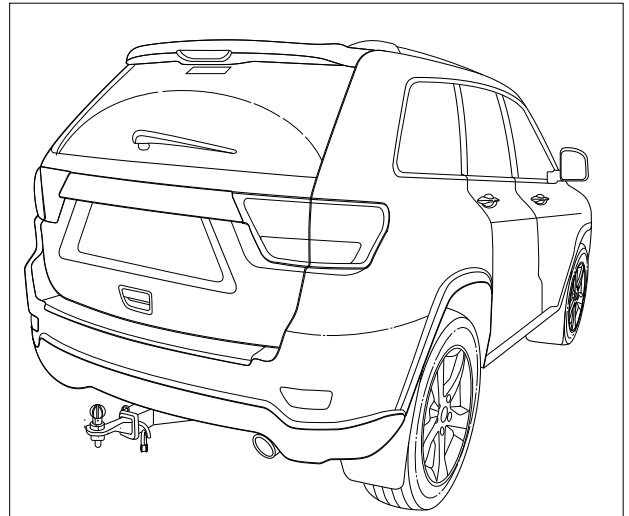
INSTALLATION INSTRUCTIONS

PLEASE ENSURE THAT ALL INSTRUCTIONS ARE UNDERSTOOD PRIOR TO FITMENT

PLACE THESE INSTRUCTIONS IN THE VEHICLES'S GLOVEBOX AFTER INSTALLATION IS COMPLETED

4. Secure Towbar to vehicle using fasteners provided and torque specifications listed on Page 2.

NOTE: There are only 3 fastening points on drivers side.



HAYMAN REESE
PART No: 101410-WL
JEEP GRAND CHEROKEE WK2

INSTALLATION INSTRUCTIONS

PLEASE ENSURE THAT INSTRUCTIONS ARE UNDERSTOOD PRIOR TO FITMENT

Wiring Loom Installation Instructions
JEEP GRAND CHEROKEE WK2

Part No: 101410-WL
ECU Required: 04826

Tail Harness Length Required: 1800mm

Wiring Loom Installation Time: Approx. 60 minutes

Important



It is not possible to over-ride the Factory RPA.
It can however be disabled through a switch on the vehicle dash.

Important



Due to possible vehicle variations, always confirm any noted vehicle colour wires with a multi-meter to ensure the correct function is identified before soldering or scotch locking. For vehicle wires denoted with two colours (example; RED/GREEN) the first colour will always be the main wire colour while the second colour is the thinner trace colour on the wire.

Issue Date 10-07-17

Page 1

Part No: 101410-WL

Hayman Reese (Cequent)
PO Box 4050, Dandenong South VIC 3164
Phone 1800 812 017 Email info@haymanreese.com.au

www.haymanreese.com.au



HAYMAN REESE
PART No: 101410-WL
JEEP GRAND CHEROKEE WK2

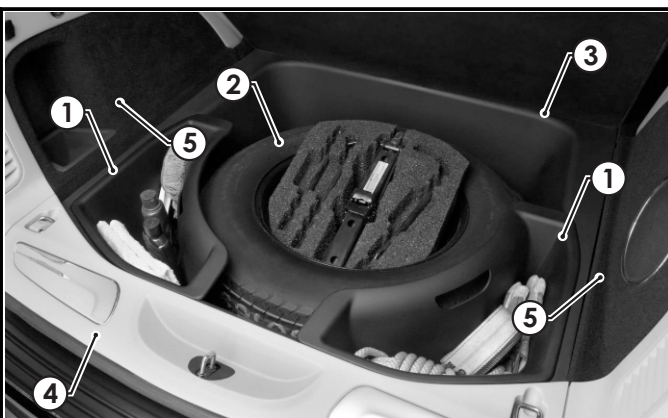
INSTALLATION INSTRUCTIONS

PLEASE ENSURE THAT INSTRUCTIONS ARE UNDERSTOOD PRIOR TO FITMENT

1. In the luggage compartment area, remove the following:
 - floor carpet (1)
 - fold forward the rear passenger seats (2).

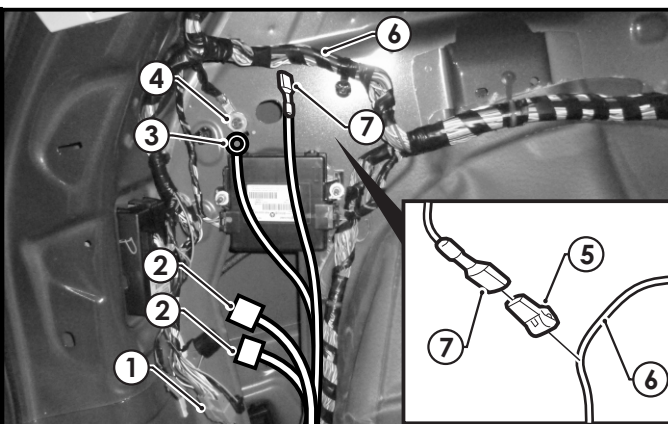


2. Remove the tool trays (1).
3. Remove any required fasteners to remove the spare wheel (2) and the spare wheel surround trim (3).
4. Remove the rear trim (4).
5. Remove any required fasteners to remove the RHS and LHS luggage compartment trims (5).



6. Disconnect the LHS break-out connectors (1) and patch the trailer patch (P/No:101410-WL) connectors (2) in between.
7. Secure the trailer patch ground ring terminal (3) to the vehicle grounding point (4).
8. Following the table below, connect the ezy-tap (5) to the corresponding vehicle wire (6), then connect the trailer patch terminal (7) to the ezy-tap (1).

Function	Trailer Patch Wire	Vehicle Harness Wire
REVERSE	BLACK / WHITE	WHITE / GREEN



Issue Date 10-07-17

Page 2

Part No: 101410-WL

Hayman Reese (Cequent)
PO Box 4050, Dandenong South VIC 3164
Phone 1800 812 017 Email info@haymanreese.com.au

www.haymanreese.com.au

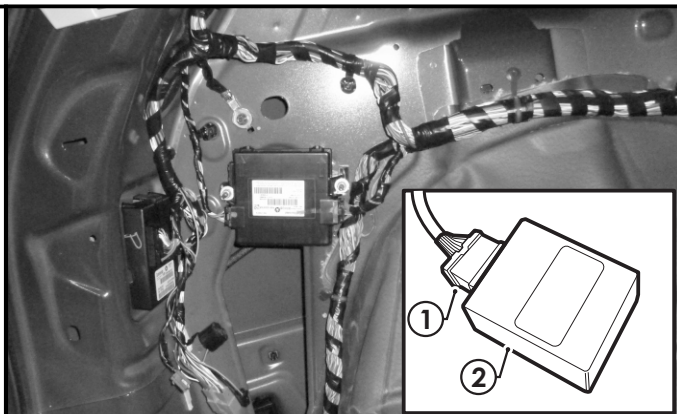


HAYMAN REESE
PART No: 101410-WL
JEEP GRAND CHEROKEE WK2

INSTALLATION INSTRUCTIONS

PLEASE ENSURE THAT INSTRUCTIONS ARE UNDERSTOOD PRIOR TO FITMENT

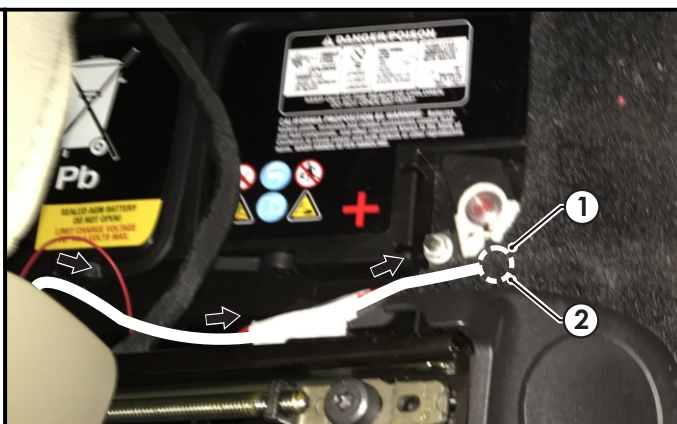
9. Connect the trailer patch (1) to the ECU (P/No: 04826) (2).
10. Locate a suitable location on the LHS sheet metal area to mount the ECU (2). Clean the chosen area with an alcohol wipe (not supplied).
11. Remove the backing from the back of the ECU and mount the ECU (2) to the cleaned area. **Ensure the ECU connector is pointing downwards.**



12. Remove the following required trims on the RHS of the vehicle to allow for harness routing:
 - remove RHS rear passenger scuff
 - remove the driver's scuff trim

This box is intentionally blank.

13. From the LHS rear quarter, route the trailer patch power ring terminal branch (1) across the rear of the vehicle to the RHS rear quarter and then follow the vehicle RHS harness to the battery underneath the driver's seat.
14. Secure the trailer patch power ring terminal (1) to the vehicle positive (2) using the existing vehicle fastener. **Be careful when removing the positive nut not to short your tool on the vehicle!**



Issue Date 10-07-17

Page 3

Part No: 101410-WL

Hayman Reese (Cequent)
PO Box 4050, Dandenong South VIC 3164
Phone 1800 812 017 Email info@haymanreese.com.au

www.haymanreese.com.au

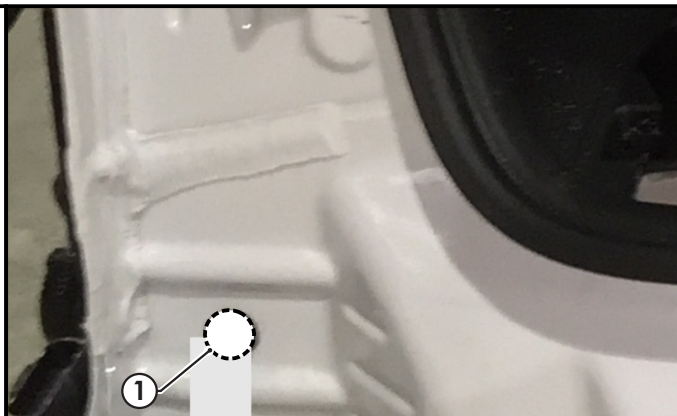


HAYMAN REESE
PART No: 101410-WL
JEEP GRAND CHEROKEE WK2

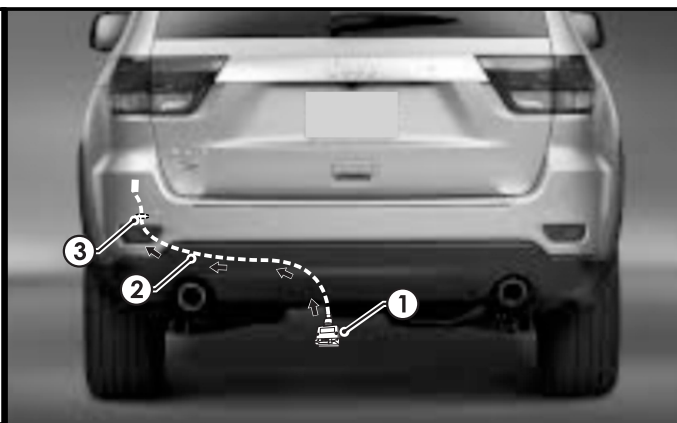
INSTALLATION INSTRUCTIONS

PLEASE ENSURE THAT INSTRUCTIONS ARE UNDERSTOOD PRIOR TO FITMENT

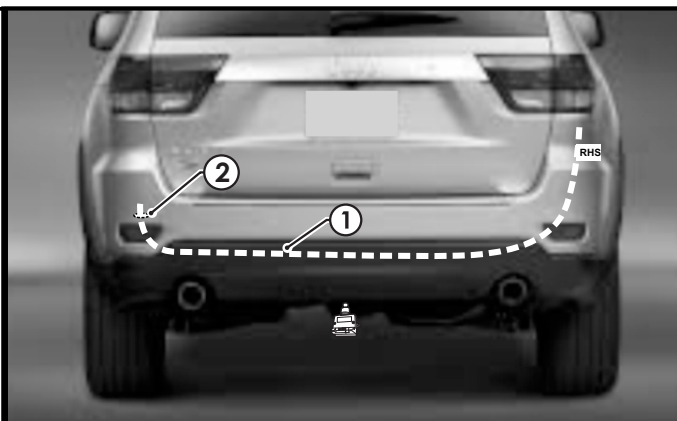
15. On the exterior LHS rear quarter of the vehicle, locate a suitable location on the vehicle sheet metal to drill a 30mm hole (1) into the luggage compartment area to allow for harness routing. **Ensure area being drilled into is free from any obstruction or vehicle parts.** Apply rust inhibitor after drilling.



16. At the rear exterior of the vehicle, mount the tail harness socket (1) to the towbar mounting bracket using M4 fasteners (not supplied).
17. Route the tail harness (tail length: 1800mm) (2) across the LHS and up into the drilled out hole (3).



18. Route the trailer patch GREEN / BLACK wire branch (1) through the grommet and the bumper cavity, across to the RHS.
19. Adjust the trailer patch harness grommet (2) so that it is seated correctly and cable tie (not supplied) into place.



Issue Date 10-07-17

Page 4

Part No: 101410-WL

Hayman Reese (Cequent)
PO Box 4050, Dandenong South VIC 3164
Phone 1800 812 017 Email info@haymanreese.com.au

www.haymanreese.com.au



HAYMAN REESE

PART No: 101410-WL

JEEP GRAND CHEROKEE WK2

PLEASE ENSURE THAT INSTRUCTIONS ARE UNDERSTOOD PRIOR TO FITMENT

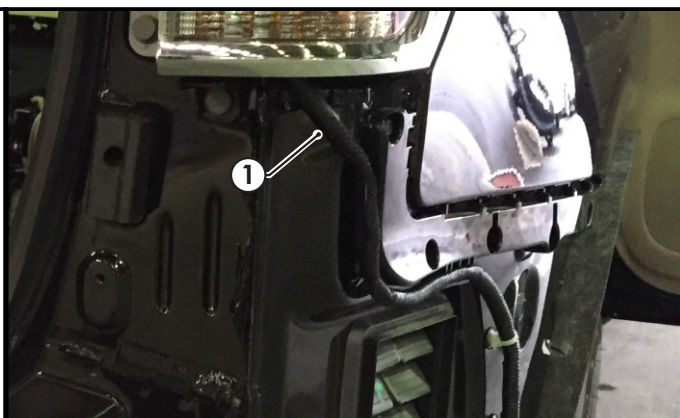
20. Route the trailer patch YELLOW / BLACK wire branch (1) through the grommet and the bumper cavity, up to the LHS.



21. At the vehicle exterior, carefully cut open the vehicle harness at the indicated point just below the RHS tail light (1).

22. Following the table below, solder the trailer patch GREEN/BLACK R.IND wire to the corresponding vehicle WHITE/YELLOW tail light wire, then water-proof the connection after.

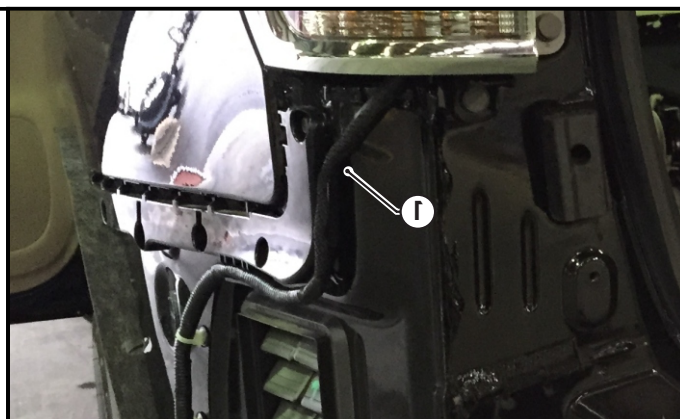
Function	Trailer Patch Wire	Vehicle Harness Wire
R.IND	GREEN / BLACK	WHITE / YELLOW



23. At the vehicle exterior, carefully cut open the vehicle harness at the indicated point just below the LHS tail light (1).

24. Following the table below, solder the trailer patch YELLOW/BLACK L.IND wire to the corresponding vehicle WHITE/GREEN tail light wire, then water-proof the connection after.

Function	Trailer Patch Wire	Vehicle Harness Wire
L.IND	YELLOW / BLACK	WHITE / GREEN



Issue Date 10-07-17

Page 5

Part No: 101410-WL

Hayman Reese (Cequent)
PO Box 4050, Dandenong South VIC 3164
Phone 1800 812 017 Email info@haymanreese.com.au

www.haymanreese.com.au

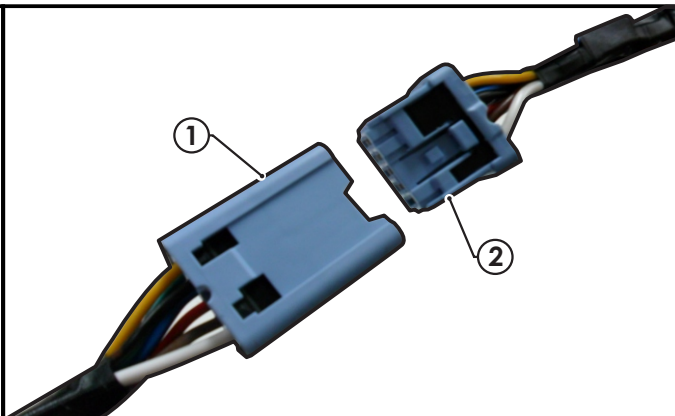


HAYMAN REESE
PART No: 101410-WL
JEEP GRAND CHEROKEE WK2

INSTALLATION INSTRUCTIONS

PLEASE ENSURE THAT INSTRUCTIONS ARE UNDERSTOOD PRIOR TO FITMENT

- 25.** Inside the luggage compartment, connect the tail harness 8-way connector (1) to the trailer patch 8-way mating connector (2).



- 26.** Test the Trailer Harness function using a Light Board or multi-meter.
- 27.** Secure all harnesses using cable ties (not supplied).
- 28.** Re-fit all removed parts and secure all fasteners, ensure there are no squeaks or rattles.
- 29.** Place instructions in glove box after fitment.
- 30.** The RPA can be disabled via a button (1) on the dash panel.



Issue Date 10-07-17

Page 6

Part No: 101410-WL

Hayman Reese (Cequent)
PO Box 4050, Dandenong South VIC 3164
Phone 1800 812 017 Email info@haymanreese.com.au

www.haymanreese.com.au





FITTING INSTRUCTIONS

Smart Pin (55070BL)

• These fitting instructions are supplied to ensure understanding of how the SMART PIN should be fitted and used correctly.

• Once installed, we recommend **ALL** instructions are kept and placed in the vehicle glove box.

NOTE: Routine maintenance and inspection of the towbar & SMART PIN is required. Regularly inspect for wear and check the tightness of the SMART PIN NUT. Follow instructions below to retighten the nut when necessary.

***Do not tow with your vehicle if the R CLIP or the SMART PIN NUT is loose or missing. Replacement parts are available from your Hayman Reese Distributor.**

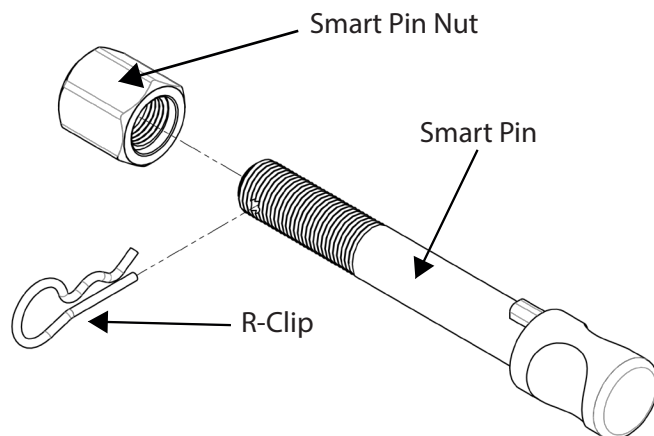


Fig 1. Smart Pin assembly

STEP 1

Insert Trailer Ball Mount (TBM) into towbar HITCHBOX, aligning hole in TBM SHANK with hole in HITCHBOX (Fig. 2).

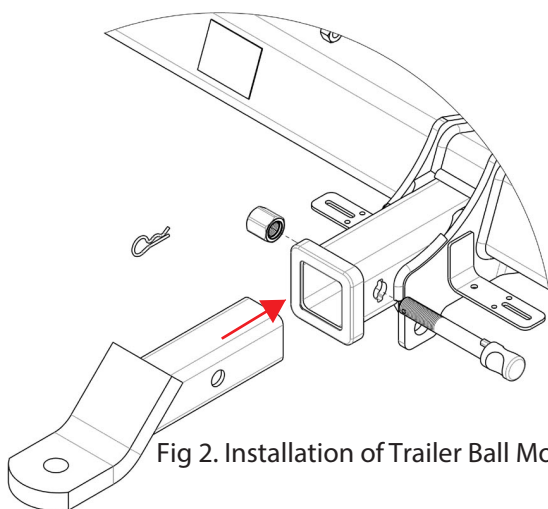


Fig 2. Installation of Trailer Ball Mount

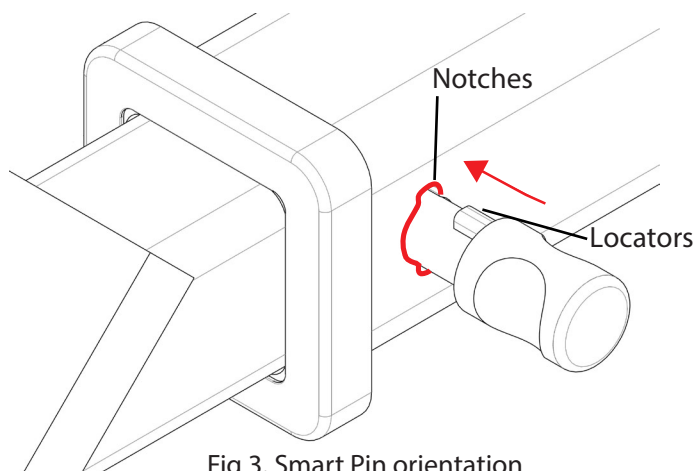


Fig 3. Smart Pin orientation

STEP 2

Insert SMART PIN through hole in HITCHBOX and hole in TBM SHANK; ensure the LOCATORS are inserted into the NOTCHES in the HITCHBOX (Fig. 3).

STEP 3

Screw SMART PIN NUT onto SMART PIN; tighten SMART PIN NUT until finger tight, ensuring TBM is restrained from movement.

STEP 4

Tighten SMART PIN NUT by turning nut a further 1/8th of a turn in the clockwise direction using a 24mm spanner (Fig 4).

STEP 5

Install SMART PIN R CLIP through the hole on the SMART PIN (Fig. 1).

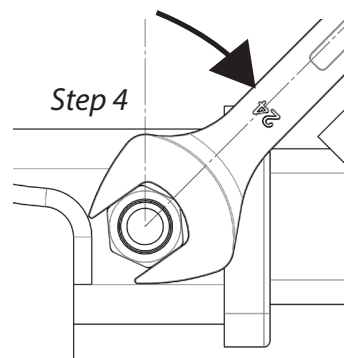


Fig 4. Tightening of Smart Pin Nut