

HAYMAN REESE
PART No: 02895RLW
HOLDEN CRUZE SRi SEDAN & HATCH 11-2011 On

INSTALLATION INSTRUCTIONS

PLEASE ENSURE THAT INSTRUCTIONS ARE UNDERSTOOD PRIOR TO FITMENT



Installation Time: Approx 45 Mins

Towbar Installation Instructions

Towbar capacity

HOLDEN CRUZE SRi SEDAN & HATCH 11-2011 On

Part Number 02895RLW

Max Towing Braked 1200 kg

Max Static Ball Load 120 kg

Hayman Reese (Cequent)
PO Box 4050, Dandenong South VIC 3164
Phone 1800 812 017 Email info@haymanreese.com.au

www.haymanreese.com.au



HAYMAN REESE
PART No: 02895RLW
HOLDEN CRUZE SRi SEDAN & HATCH 11-2011 On
INSTALLATION INSTRUCTIONS
PLEASE ENSURE THAT INSTRUCTIONS ARE UNDERSTOOD PRIOR TO FITMENT

Warning:

1. Do not, drill, cut, weld or otherwise modify the towbar.
2. If you are using electric welding on a motor vehicle, **always** check that the vehicle is not equipped with electronic engine or instrument management equipment. Failure to do so could **destroy** any onboard computers. If in doubt, check with the vehicle's manufacturer.
1. **General:** Ensure all hardware items have been included refer to assembly diagram.
2. It is recommended that the instructions are read through and completely understood before making any attempt to fit this product.
3. Be wary of any changes to vehicle designs or other accessories that may conflict with the installation of this product.
4. Before drilling ensure that the area is clear of fuel, electrical & other components.
5. All holes drilled into the body panels shall have all burrs & swarf removed then coated with a suitable rust preventative paint.
6. The high tensile fasteners supplied with this product were used to achieve the specified rating. If replacement is required ensure that fasteners of the same rating & quality are used. Contact an authorised **Hayman Reese** dealer if further information is required.
7. Ensure that all hardware is fastened to torque list below check fasteners on regular basis.
8. Towbar load rating sticker provided with this product shall be conspicuously located on inside rear end of the driver's door. **(See diagram below).**
9. Hayman Reese recommends that you check your tow ball to ensure that it complies with the Australian standards **AS 4177.2**.
10. **PLEASE NOTE:** It is advised to remove your lug or tbm when not actually towing so as to produce a clear view of the vehicles registration plate if obscured, and to also provide maximum available departure angle.

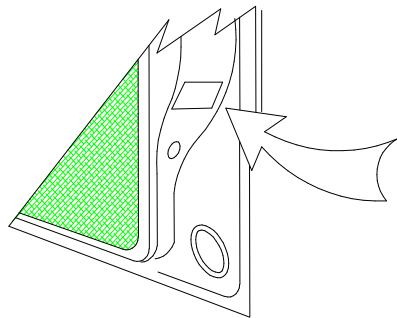
Tow bar Maintenance and Care.

Hayman Reese recommends that bolt torque's, as listed below, are routinely and regularly inspected and checked for correct tension. Replace any worn or defective parts.

We recommended to remove Tow Ball Mounts (TBM's, tongues or lugs) when not being used for any considerable length of time.

So as to avoid injury, when not towing it is suggested that the tongue, Pull Pin and R-clip are removed then stored in a safe, clean and dry place, away from excessive moisture.

Hitch Pull Pins and spring "R" clips are regularly checked for proper installation. Replace any worn or defective parts.



**Place load rating sticker
inside driver's door here**

**RECOMMENDED ASSEMBLY TORQUE
LISTING**

Diameter Grade 8.8 Bolt

M6	9.5 Nm
M8	21.7 Nm
M10	43.4 Nm
M12	77.3 Nm
M14	146 Nm
M16	189.8 Nm

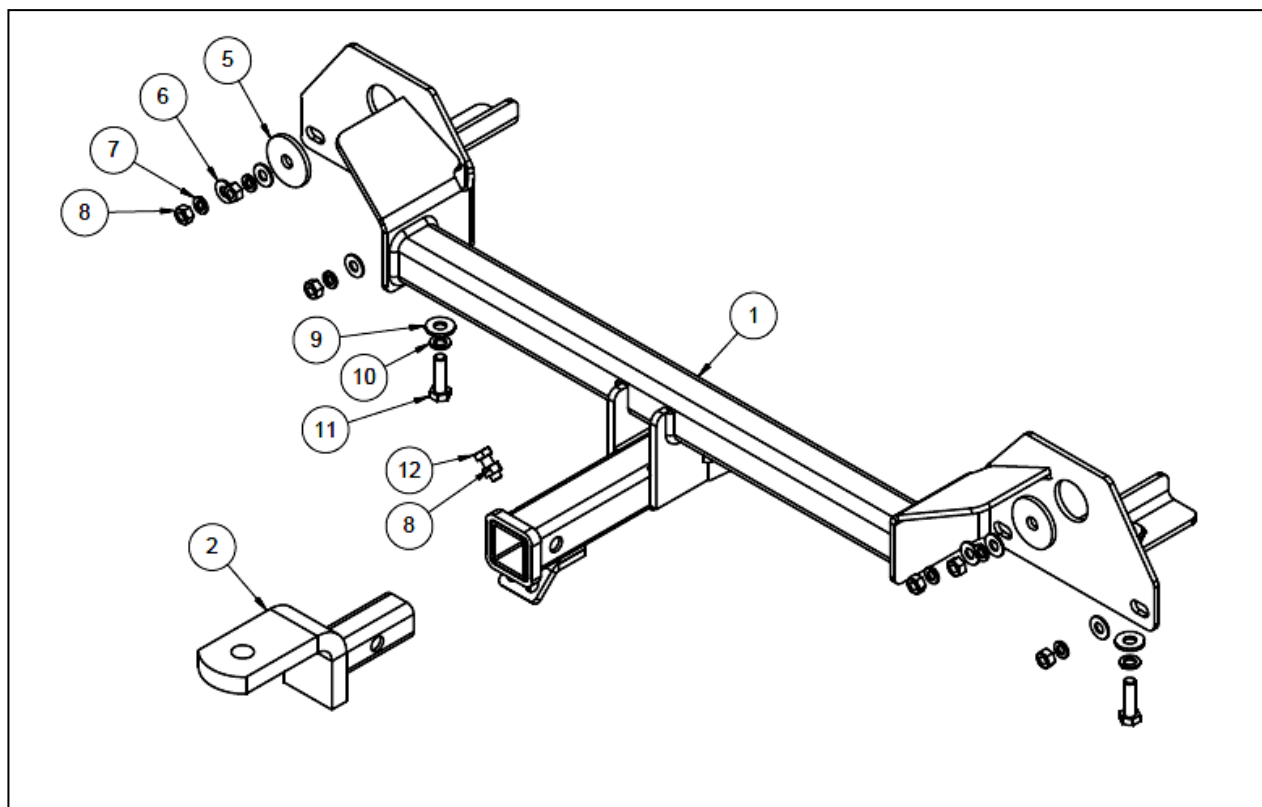
FOR TOWING PURPOSES ONLY

For towing capacity details please refer to vehicle owner's manual or to the manufacturer. Overloading can void your warranties.

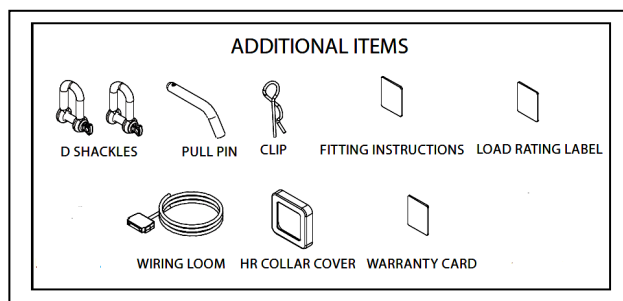
HAYMAN REESE
PART No: 02895RLW
HOLDEN CRUZE SRI SEDAN & HATCH 11-2011 On

INSTALLATION INSTRUCTIONS

PLEASE ENSURE THAT INSTRUCTIONS ARE UNDERSTOOD PRIOR TO FITMENT



QTY.	DESCRIPTION	ITEM NO.
1	WELDED ASSEMBLY HOLDEN CRUZE	1
1	TRAILER BALL MOUNT	2
1	BOLT PACK ASSY	3
1	Plastic Sheet Bag	4
2	SPACER PLATE	5
6	Washer Flat M10 x 23 x 2 z/p	6
6	M10 X 3.5 X 2.2 SPRING WSHR	7
7	HEX NUT M10x1.5	8
2	WASHER M12x28.8x3mm	9
2	Wshr spring ft sec M12x4.0x2.5mm z/p	10
2	BOLT M12-1.75x40 GR8.8	11
1	BOLT M10-1.50 x 25	12



HAYMAN REESE
PART No: 02895RLW
HOLDEN CRUZE SRi SEDAN & HATCH 11-2011 On
INSTALLATION INSTRUCTIONS
PLEASE ENSURE THAT INSTRUCTIONS ARE UNDERSTOOD PRIOR TO FITMENT

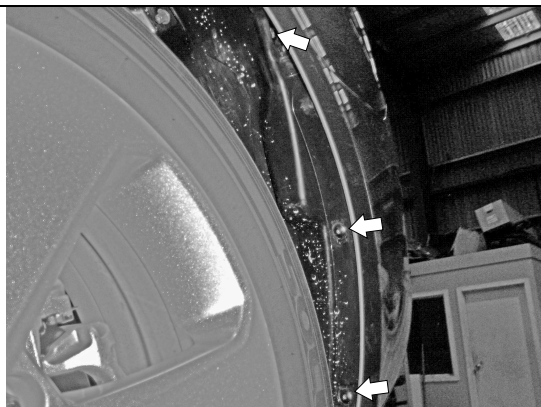


Figure 2 – Wheel arch screws.

SEDAN & HATCH :

1. Remove screws x 3 from the wheel arch.

Note: Driver side shown in Figure 2, repeat the step for passenger side.



Position the vehicle on to a safe working height on the hoist before commencing fitment.



HATCH:

Remove tail light assemblies,

Remove screw from tail light cavity.

Dis-connect number plate light plug

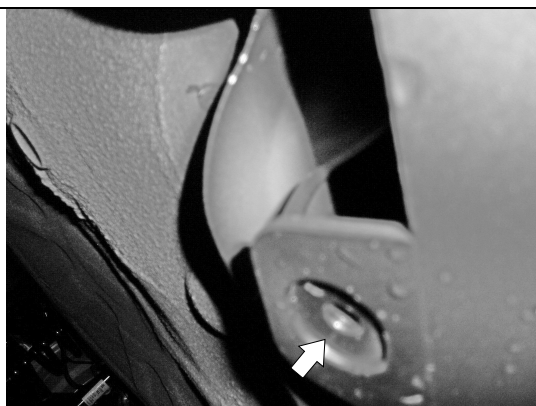


Figure 3 – Remove Bottom Scrivets.

2. Remove scrivets x 2 from the bottom side of the bumper.

Note: Driver's side shown in Figure 3, repeat the step for passenger side.

3. Flex the bumper out from the sides and pull rearward.

INSTALLATION INSTRUCTIONS

PLEASE ENSURE THAT INSTRUCTIONS ARE UNDERSTOOD PRIOR TO FITMENT



Figure 4 – Remove Impact beam from back panel.

4. Remove the Impact Beam from the back panel, removing M10 nuts x 3 from each side, as shown in Figure 4.

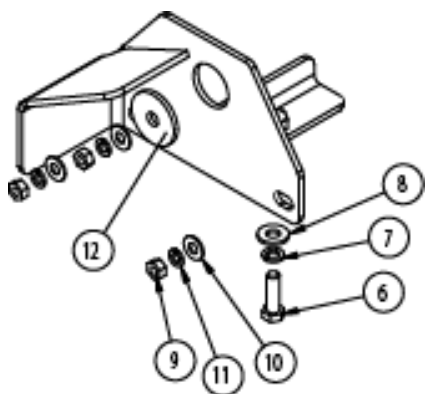


Figure 5 – Locate the Towbar in the chassis rail.

5. Locate the towbar into the chassis rail. On the back panel, fasten with M10 nut x 3, spring washers x 3 and flat washers x 3, (use the spacer plate for the uppermost hole).

6. Insert and fasten M12 bolt, spring washer & flat washers.

Refer to Figure 5 and also to Figure 1

Repeat Step 5 and 6 for the other side.

7. Tighten and torque all bolts up to the torque requirement as mentioned.

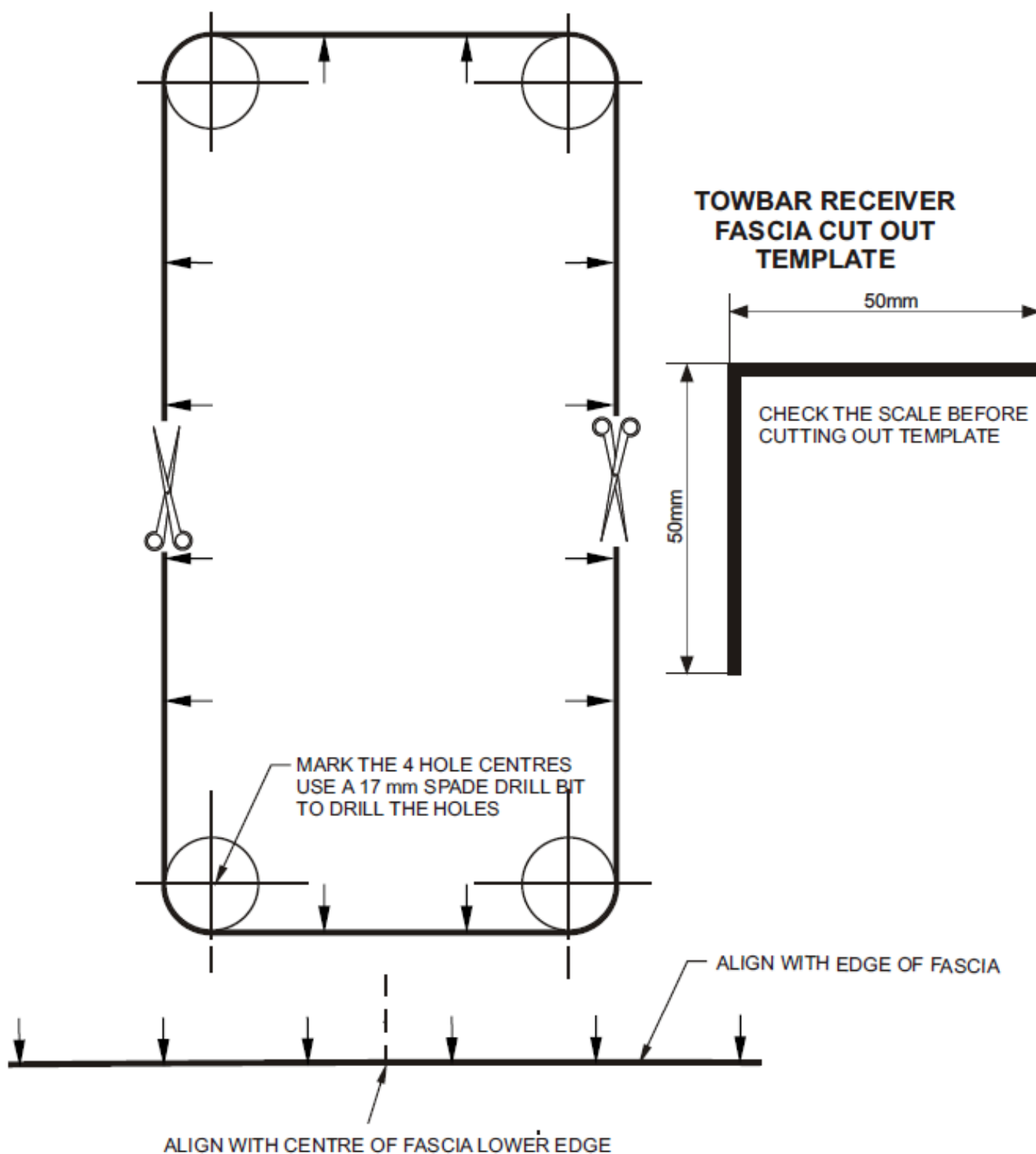
8. Cut the bumper as illustrated, using template supplied.

9. Refit the bumper in the reverse order.

10. Affix the load rating label as mentioned on page 2.

INSTALLATION INSTRUCTIONS

PLEASE ENSURE THAT INSTRUCTIONS ARE UNDERSTOOD PRIOR TO FITMENT



HAYMAN REESE
PART No: 100755-WL
HOLDEN CRUZE HATCH
(11/2011 – Onwards)

INSTALLATION INSTRUCTIONS

PLEASE ENSURE THAT INSTRUCTIONS ARE UNDERSTOOD PRIOR TO FITMENT

Wiring Loom Installation Instructions

Holden Cruze Hatch
(11/2011 – Onwards)
Part No: 100755-WL

Tail Harness Length Required: 1200mm
ECU Required Part No: 04826

Note: If factory OEM RPA is fitted, the Trouble Code will be logged if disabled.

Wiring Loom Installation Time: Approx 45 Mins

Issue Date 24-01-12

Page 1

Part No: 100755-WL

Hayman Reese (Cequent)
PO Box 4050, Dandenong South VIC 3164
Phone 1800 812 017 Email info@haymanreese.com.au

www.haymanreese.com.au



HAYMAN REESE
PART No: 100755-WL
HOLDEN CRUZE HATCH
(11/2011 – Onwards)

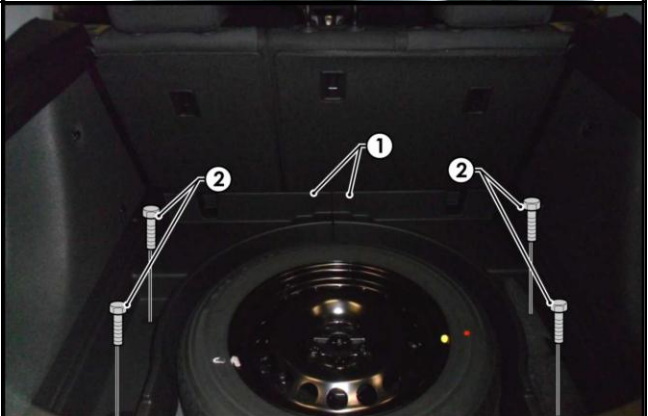
INSTALLATION INSTRUCTIONS

PLEASE ENSURE THAT INSTRUCTIONS ARE UNDERSTOOD PRIOR TO FITMENT

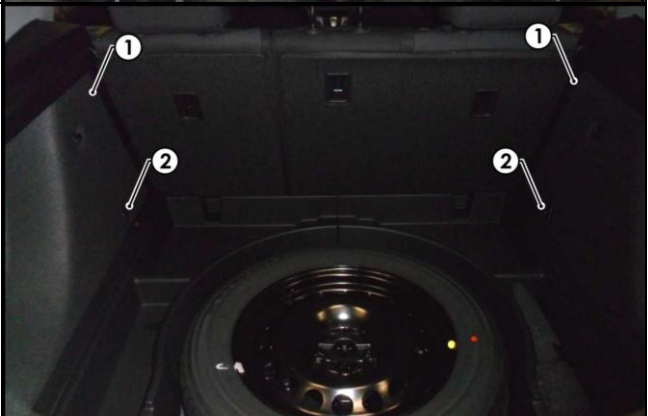
1. On the rear of the luggage compartment, remove the parcel shelf (1).
2. Remove the floor carpet cover (2).



3. Remove both the LHS and RHS tool trays (1) by first removing the four 10mm bolts (2).



4. On both the LHS and RHS of the luggage compartment (1), remove the two cargo hooks (2).



Issue Date 24-01-12

Page 2

Part No: 100755-WL

Hayman Reese (Cequent)
PO Box 4050, Dandenong South VIC 3164
Phone 1800 812 017 Email info@haymanreese.com.au

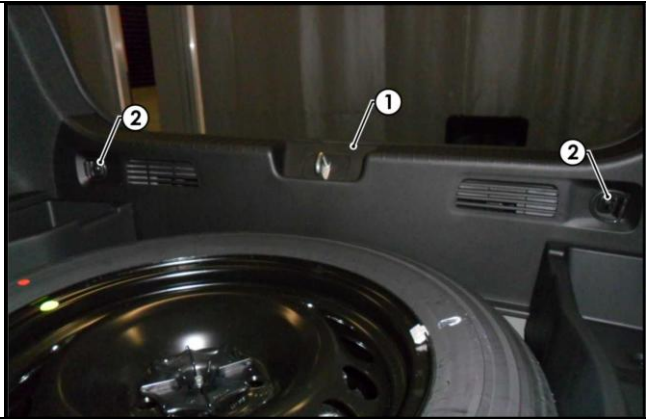
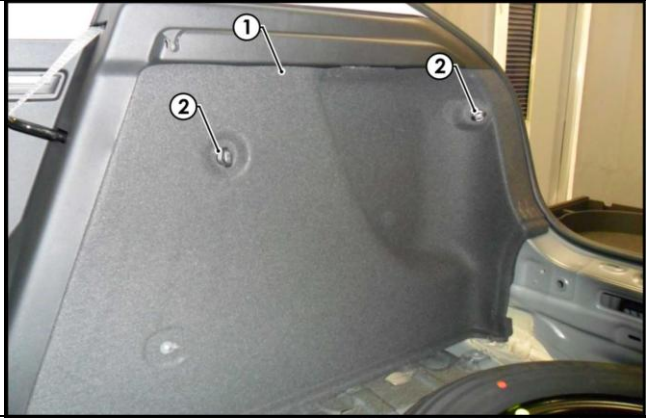
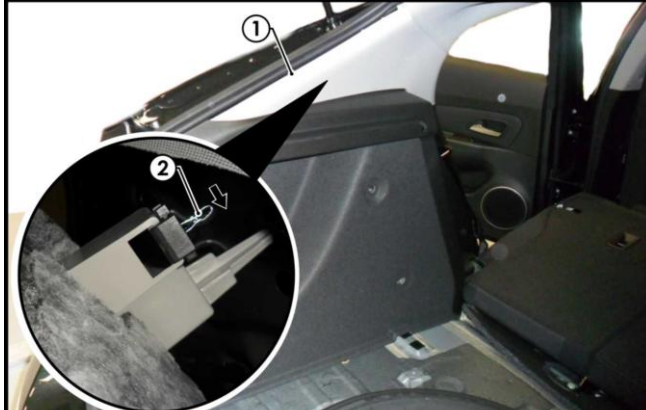
www.haymanreese.com.au



HAYMAN REESE
PART No: 100755-WL
HOLDEN CRUZE HATCH
(11/2011 – Onwards)

INSTALLATION INSTRUCTIONS

PLEASE ENSURE THAT INSTRUCTIONS ARE UNDERSTOOD PRIOR TO FITMENT

<p>5. Remove the rear luggage compartment trim (1) by first removing the two cargo hooks (2).</p>	
<p>6. On the RHS of the luggage compartment (1), remove the two cargo hooks (2).</p> <p>Repeat for the LHS.</p>	
<p>7. On the upper LHS of the luggage compartment, dislodge the 'C' pillar trim (1).</p> <p>8. Carefully remove the air bag clip (2) from the 'C' pillar trim (1) by sliding it towards the front of the vehicle.</p> <p>9. Remove the 'C' pillar trim (1).</p> <p>Repeat for the RHS.</p>	

Issue Date 24-01-12

Page 3

Part No: 100755-WL

Hayman Reese (Cequent)
PO Box 4050, Dandenong South VIC 3164
Phone 1800 812 017 Email info@haymanreese.com.au

www.haymanreese.com.au



HAYMAN REESE
PART No: 100755-WL
HOLDEN CRUZE HATCH
(11/2011 – Onwards)

INSTALLATION INSTRUCTIONS

PLEASE ENSURE THAT INSTRUCTIONS ARE UNDERSTOOD PRIOR TO FITMENT

10. On the rear passenger's side, fold down the seats (1).



11. Remove the LHS rear passenger sill trim (1) and dislodge the 'B' pillar trim lower section (2).

Repeat for the RHS.



12. On the rear of the luggage compartment, dislodge the LHS luggage compartment trim (1).

Repeat for the RHS.

Note: When dislodging RHS luggage compartment trim, ensure to disconnect the connector.



Issue Date 24-01-12

Page 4

Part No: 100755-WL

Hayman Reese (Cequent)
PO Box 4050, Dandenong South VIC 3164
Phone 1800 812 017 Email info@haymanreese.com.au

www.haymanreese.com.au



HAYMAN REESE
PART No: 100755-WL
HOLDEN CRUZE HATCH
(11/2011 – Onwards)

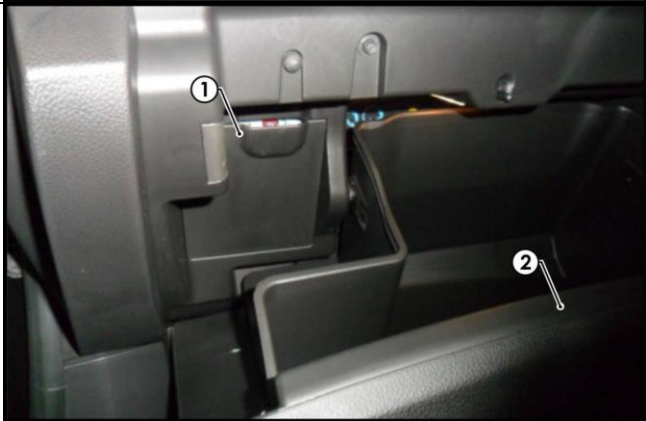
INSTALLATION INSTRUCTIONS

PLEASE ENSURE THAT INSTRUCTIONS ARE UNDERSTOOD PRIOR TO FITMENT

13. Remove the LHS front passenger sill trim (1).



14. Underneath the passenger's lower dash, remove the fuse panel cover (1), located inside the glove box compartment (2).



15. At the rear of the vehicle on the RHS, remove the grommet seal and using a step drill, drill out the grommet hole (1) to Ø30mm.
16. File down any rough edges and spray with rust inhibitor.



Issue Date 24-01-12

Page 5

Part No: 100755-WL

Hayman Reese (Cequent)
PO Box 4050, Dandenong South VIC 3164
Phone 1800 812 017 Email info@haymanreese.com.au

www.haymanreese.com.au

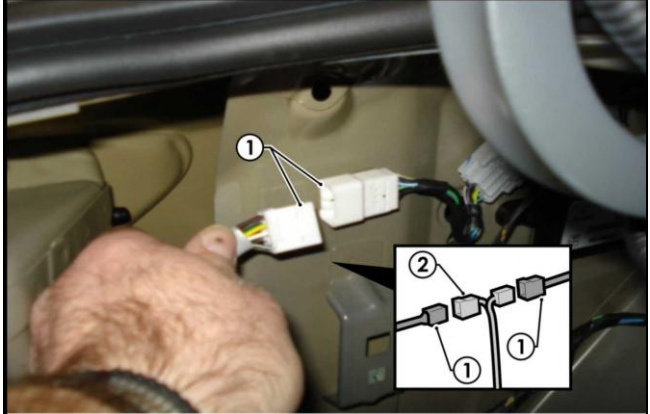


HAYMAN REESE
PART No: 100755-WL
HOLDEN CRUZE HATCH
(11/2011 – Onwards)

INSTALLATION INSTRUCTIONS

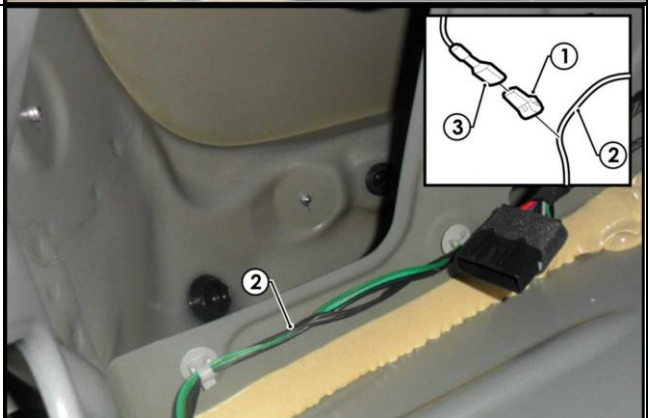
PLEASE ENSURE THAT INSTRUCTIONS ARE UNDERSTOOD PRIOR TO FITMENT

17. On the LHS of the luggage compartment, disconnect the 8-way tail light connectors (1).
18. Connect the Trailer Patch Harness (P/No: 100755-WL) 8-way connectors (2) in between the tail light connectors (1).

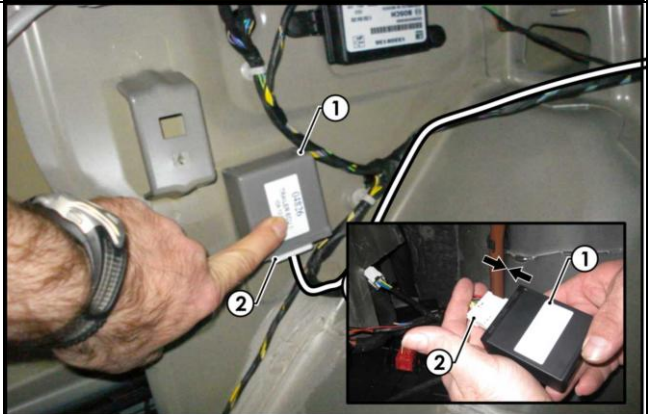


19. Following the table below, connect the ezy-tap (1) to the vehicle 'GREEN/WHITE' reverse wire (2), then connect the trailer patch terminal (3) to the ezy-tap (1).

Function	Trailer Patch	Vehicle Connector
REVERSE	BLACK / WHITE	GREEN / WHITE



20. Apply double sided tape to the ECU (1) and adhere it to the vehicle sheet metal on the LHS of the luggage compartment.
21. Connect the trailer patch 12-way connector (2) to the ECU (1).



Issue Date 24-01-12

Page 6

Part No: 100755-WL

Hayman Reese (Cequent)
PO Box 4050, Dandenong South VIC 3164
Phone 1800 812 017 Email info@haymanreese.com.au

www.haymanreese.com.au

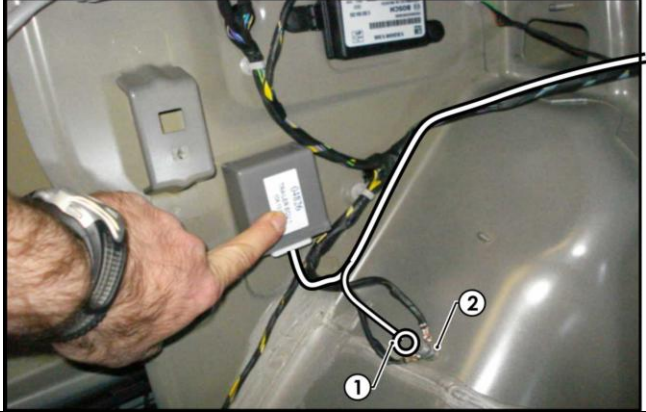


HAYMAN REESE
PART No: 100755-WL
HOLDEN CRUZE HATCH
(11/2011 – Onwards)

INSTALLATION INSTRUCTIONS

PLEASE ENSURE THAT INSTRUCTIONS ARE UNDERSTOOD PRIOR TO FITMENT

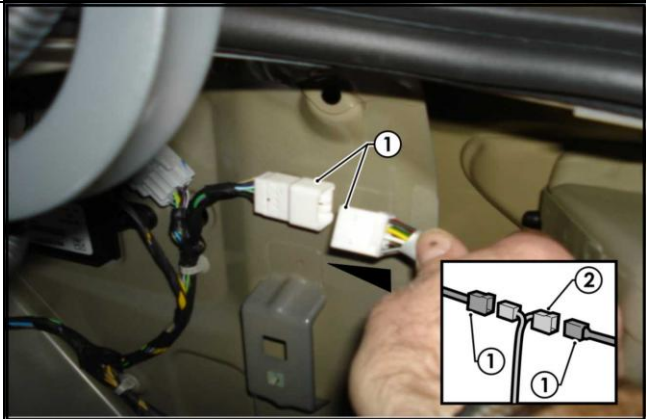
22. Connect the Trailer Patch ground ring terminal (1) to the vehicle grounding point (2).



23. Route the trailer patch harness (1) towards the RHS of the luggage compartment.



24. On the LHS of the luggage compartment, disconnect the tail light connectors (1) above the wheel arch.
25. Patch the trailer patch harness connectors (2) in between the tail light.



Issue Date 24-01-12

Page 7

Part No: 100755-WL

Hayman Reese (Cequent)
PO Box 4050, Dandenong South VIC 3164
Phone 1800 812 017 Email info@haymanreese.com.au

www.haymanreese.com.au

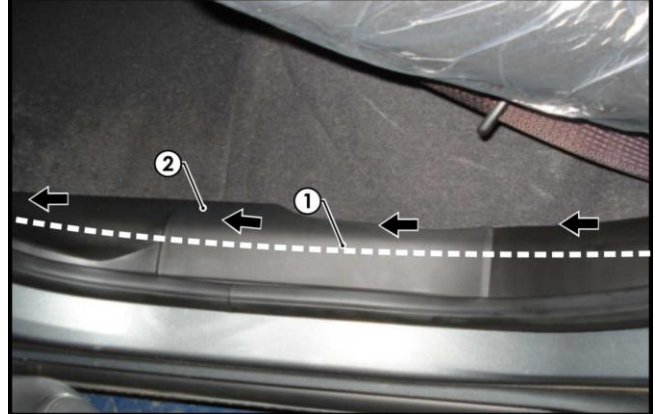


HAYMAN REESE
PART No: 100755-WL
HOLDEN CRUZE HATCH
(11/2011 – Onwards)

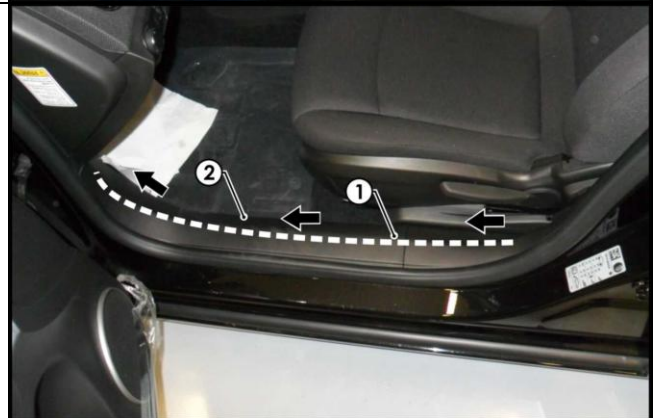
INSTALLATION INSTRUCTIONS

PLEASE ENSURE THAT INSTRUCTIONS ARE UNDERSTOOD PRIOR TO FITMENT

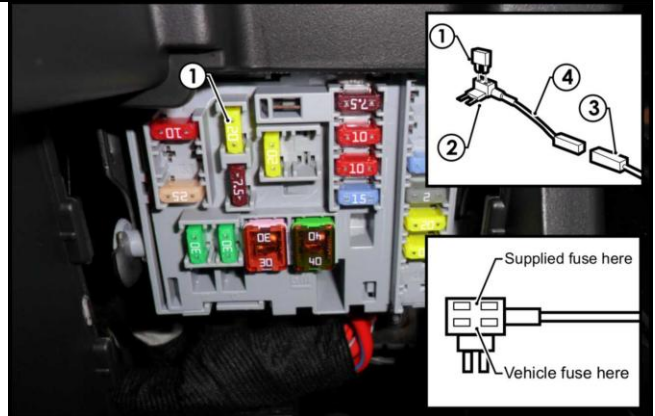
26. From the LHS of the rear luggage compartment, route the 'ORANGE' power wire (1) along the passenger's door sill (2) towards the front of the vehicle.



27. Continue routing the 'ORANGE' power wire (1) on the LHS past the passenger's door sill trim (2), towards the glove box compartment.



28. Inside the fuse panel, locate the 20-amp fuse (1) as shown and remove.
29. Insert the previously removed 20-amp fuse (1) into the lower slot of the add-a-fuse (2).
30. Plug the add-a-fuse (2) into the now vacant slot.
31. Connect the power patch 1-way connector (3) into the add-a-fuse harness mating connector (4).



Issue Date 24-01-12

Page 8

Part No: 100755-WL

Hayman Reese (Cequent)
PO Box 4050, Dandenong South VIC 3164
Phone 1800 812 017 Email info@haymanreese.com.au

www.haymanreese.com.au



HAYMAN REESE
PART No: 100755-WL
HOLDEN CRUZE HATCH
(11/2011 – Onwards)

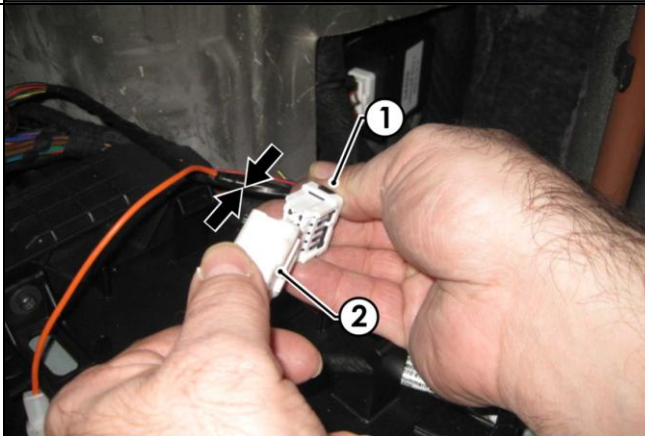
INSTALLATION INSTRUCTIONS

PLEASE ENSURE THAT INSTRUCTIONS ARE UNDERSTOOD PRIOR TO FITMENT

32. Mount the trailer socket (1) to the tow bar mounting bracket using M4 fasteners (not supplied).
33. Route the tail harness (2) across the tow bar towards the previously drilled out hole.
34. Ensure the tail harness grommet is seated correctly and secure in place using a cable tie (not supplied).



35. Connect the tail harness (tail length 1200mm) 8-way connector (1) to the trailer patch mating 8-way connector (2).



36. Test the trailer patch function using a light board or multi meter.
37. Secure all harnesses using cable ties (not supplied).
38. Re-fit all removed parts and secure all fasteners, ensuring there are no squeaks or rattles.
39. Place the fitting instructions in the glove box after fitment.

Issue Date 24-01-12

Page 9

Part No: 100755-WL

Hayman Reese (Cequent)
PO Box 4050, Dandenong South VIC 3164
Phone 1800 812 017 Email info@haymanreese.com.au

www.haymanreese.com.au

