

HAYMAN REESE
PART No: 02791RLW
HONDA CIVIC 5Dr

INSTALLATION INSTRUCTIONS

PLEASE ENSURE THAT ALL INSTRUCTIONS ARE UNDERSTOOD PRIOR TO FITMENT



Installation Time: Approx **60** Mins

Towbar Installation Instructions
HONDA CIVIC 5Dr

Towbar capacity

Part Number 02791RLW

Max Towing Braked 1400kg
Max Static Ball Load 75kg

Hayman Reese (Cequent)
PO Box 4050, Dandenong South VIC 3164
Phone 1800 812 017 Email info@haymanreese.com.au

HAYMAN REESE

PART No: 02791RLW

Honda Civic Si 5Dr

INSTALLATION INSTRUCTIONS

PLEASE ENSURE THAT ALL INSTRUCTIONS ARE UNDERSTOOD PRIOR TO FITMENT

Warning:

1. Do not, drill, cut, weld or otherwise modify the towbar.
2. If you are using electric welding on a motor vehicle, **always** check that the vehicle is not equipped with electronic engine or instrument management equipment. Failure to do so could **destroy** any onboard computers. If in doubt, check with the vehicle's manufacturer.
1. **General:** Ensure all hardware items have been included refer to assembly diagram.
2. It is recommended that the instructions are read through and completely understood before making any attempt to fit this product.
3. Be wary of any changes to vehicle designs or other accessories that may conflict with the installation of this product.
4. Before drilling ensure that the area is clear of fuel, electrical & other components.
5. All holes drilled into the body panels shall have all burrs & swarf removed then coated with a suitable rust preventative paint.
6. The high tensile fasteners supplied with this product were used to achieve the specified rating. If replacement is required ensure that fasteners of the same rating & quality are used. Contact an authorised **Hayman Reese** dealer if further information is required.
7. Ensure that all hardware is fastened to torque list below check fasteners on regular basis.
8. Towbar load rating sticker provided with this product shall be conspicuously located on inside rear end of the driver's door. **(See diagram below).**
9. Hayman Reese recommends that you check your tow ball to ensure that it complies with the Australian standards **AS 4177.2**.
10. **PLEASE NOTE:** It is advised to remove your lug or tbm when not actually towing so as to produce a clear view of the vehicles registration plate if obscured, and to also provide maximum available departure angle.
11. Pull Pin must be fit in down position.

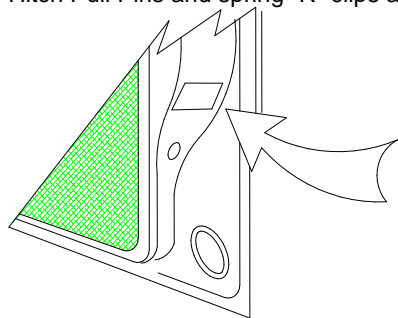
Tow bar Maintenance and Care.

Hayman Reese recommends that bolt torque's, as listed below, are routinely and regularly inspected and checked for correct tension. Replace any worn or defective parts.

We recommended to remove Tow Ball Mounts (TBM's, tongues or lugs) when not being used for any considerable length of time.

So as to avoid injury, when not towing it is suggested that the tongue, Pull Pin and R-clip are removed then stored in a safe, clean and dry place, away from excessive moisture.

Hitch Pull Pins and spring "R" clips are regularly checked for proper installation. Replace any worn or defective parts.



Place load rating sticker
inside driver's door here

RECOMMENDED ASSEMBLY TORQUE LISTING

Diameter Grade 8.8 Bolt

M6	9.5 Nm
M8	21.7 Nm
M10	43.4 Nm
M12	77.3 Nm
M14	146 Nm
M16	189.8 Nm

FOR TOWING PURPOSES ONLY

For towing capacity details please refer to vehicle owner's manual or to the manufacturer. Overloading can void your warranties.

Issue Date 13/4/11

Page 2

Part No: 02791RLW

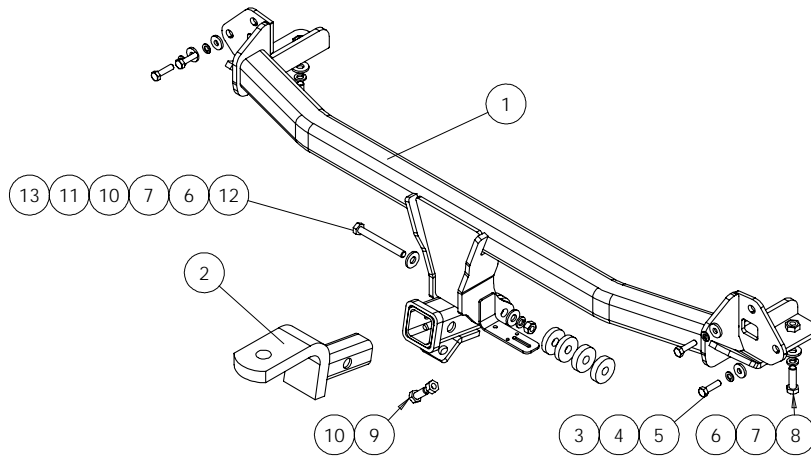
HAYMAN REESE

PART No: 02791RLW

Honda Civic Si 5Dr

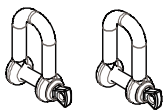
INSTALLATION INSTRUCTIONS

PLEASE ENSURE THAT ALL INSTRUCTIONS ARE UNDERSTOOD PRIOR TO FITMENT



QTY.	DESCRIPTION	ITEM NO.
1	WELDED ASSY. HONDA CIVIC	1
1	T.B.MOUNT	2
4	M8 x 22 x 3.3mm FLAT WASHER	3
4	WSHR SPRING FT SEC M8x3.0x2.0mm z/p	4
4	M8 - 1.25 x 30mm BOLT	5
4	WSHR FT M10 X 25.4 X 3	6
3	M10 X 3.5 X 2.2 SPRING WSHR	7
2	M10 - 1.5 x 35mm BOLT	8
1	M10 x 25 1.5P BOLT	9
2	NUT M10 x 1.5P	10
4	PACKER PLATE	11
1	Bolt M10 x 1.5 x 90 Gr 8.8 Z/P	12
4	PACKER PLATE	13

ADDITIONAL ITEMS



D SHACKLES



PULL PIN



CLIP



FITTING INSTRUCTIONS



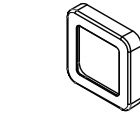
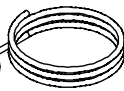
LOAD RATING LABEL



BUMPER TRIM



WIRING LOOM



HR COLLAR COVER



WARRANTY CARD





HAYMAN REESE

PART No: 02791RLW

Honda Civic Si 5Dr

INSTALLATION INSTRUCTIONS

PLEASE ENSURE THAT ALL INSTRUCTIONS ARE UNDERSTOOD PRIOR TO FITMENT

			<ol style="list-style-type: none">1. Remove taillight assembly on both sides. Remove screws inside boot cavity.
			<ol style="list-style-type: none">2. Remove scrivets under bumper and mud guard assembly. Pull open the flare guard and remove screw holding the bumper.3. Remove bumper skin by flex outward.
			<ol style="list-style-type: none">4. Remove impact beam and discard.5. Fit towbar inside chassis rails and secure towbar to the car as per diagram.
			<ol style="list-style-type: none">6. Fit appropriate fitting washers and secure towbar to towing hook using M10x90 bolt, spring washer and flat washers.7. Torque all fasteners to specification.


HAYMAN REESE

PART No: 02791RLW

Honda Civic Si 5Dr

INSTALLATION INSTRUCTIONS

PLEASE ENSURE THAT ALL INSTRUCTIONS ARE UNDERSTOOD PRIOR TO FITMENT

	<ol style="list-style-type: none">8. 90x90 section on the bottom centre of bumper bar.9. Refit bumper bar to towbar.

HAYMAN REESE
PART No: 100639-WL
HONDA FK/FN CIVIC HATCH
INSTALLATION INSTRUCTIONS

PLEASE ENSURE THAT INSTRUCTIONS ARE UNDERSTOOD PRIOR TO FITMENT

Wiring Loom Installation Instructions

HONDA FK/FN CIVIC HATCH
Part No: 100639-WL

Tail Harness Length Required: 1200mm
RPA Override Switch Part No: 04848 (If Fitted)

Wiring Loom Installation Time: Approx 60 Mins

Issue Date 13-04-11

Page 1

Part No: 100639-WL

Hayman Reese (Cequent)
PO Box 4050, Dandenong South VIC 3164
Phone 1800 812 017 Email info@haymanreese.com.au

www.haymanreese.com.au



HAYMAN REESE
PART No: 100639-WL
HONDA FK/FN CIVIC HATCH
INSTALLATION INSTRUCTIONS

PLEASE ENSURE THAT INSTRUCTIONS ARE UNDERSTOOD PRIOR TO FITMENT

1. In the luggage compartment, remove the parcel shelf (1) and fold the rear seats (2) forward.



2. Lift the rear section of the floor cover (1).



3. Remove the spare wheel cover and then remove the spare wheel (1).



Issue Date 13-04-11

Page 2

Part No: 100639-WL

Hayman Reese (Cequent)
PO Box 4050, Dandenong South VIC 3164
Phone 1800 812 017 Email info@haymanreese.com.au

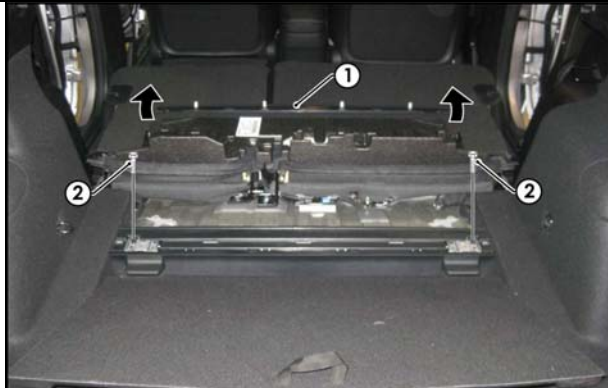
www.haymanreese.com.au



HAYMAN REESE
PART No: 100639-WL
HONDA FK/FN CIVIC HATCH
INSTALLATION INSTRUCTIONS

PLEASE ENSURE THAT INSTRUCTIONS ARE UNDERSTOOD PRIOR TO FITMENT

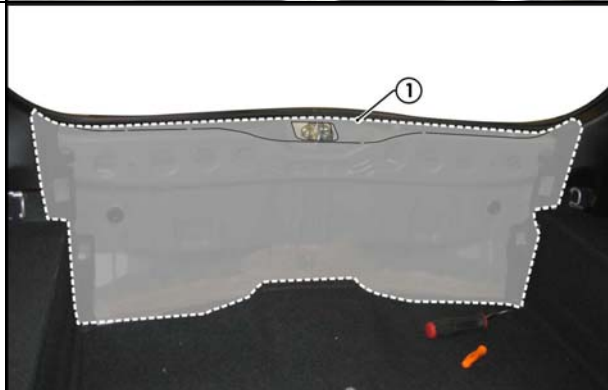
4. Lift the front section of the floor cover (1) and remove the two 10mm bolts (2).



5. Remove the rear section of the floor cover (1) by first removing the two lower trim caps (2) and the two 10mm bolts (3) underneath.



6. Remove the luggage compartment rear trim (1).



Issue Date 13-04-11

Page 3

Part No: 100639-WL

Hayman Reese (Cequent)
PO Box 4050, Dandenong South VIC 3164
Phone 1800 812 017 Email info@haymanreese.com.au

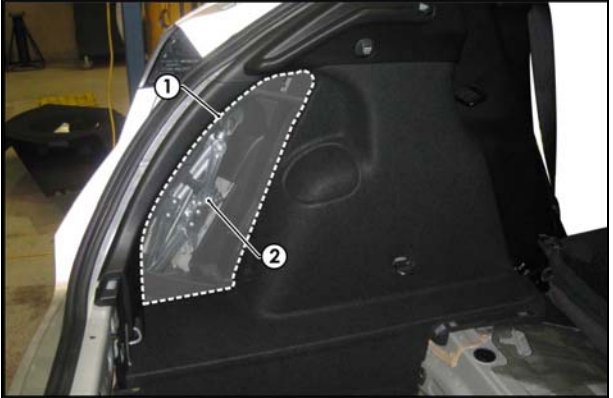
www.haymanreese.com.au



HAYMAN REESE
PART No: 100639-WL
HONDA FK/FN CIVIC HATCH
INSTALLATION INSTRUCTIONS

PLEASE ENSURE THAT INSTRUCTIONS ARE UNDERSTOOD PRIOR TO FITMENT

7. On the LHS of the luggage compartment, remove the LHS access panel cover (1) and then remove the vehicle jack (2).



8. Inside the vehicle cabin, remove the LHS rear door sill trim (1).
9. Repeat the Step for the RHS.



10. In the luggage compartment, dislodge the LHS luggage compartment trim (1).
11. Disconnect the 12v accessory connector (2) and remove the LHS luggage compartment trim (1).



Issue Date 13-04-11

Page 4

Part No: 100639-WL

Hayman Reese (Cequent)
PO Box 4050, Dandenong South VIC 3164
Phone 1800 812 017 Email info@haymanreese.com.au

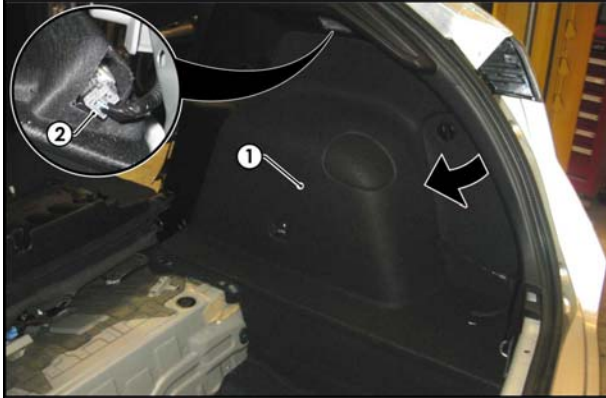
www.haymanreese.com.au



HAYMAN REESE
PART No: 100639-WL
HONDA FK/FN CIVIC HATCH
INSTALLATION INSTRUCTIONS

PLEASE ENSURE THAT INSTRUCTIONS ARE UNDERSTOOD PRIOR TO FITMENT

12. Dislodge the RHS luggage compartment trim (1).
13. Disconnect the light connector (2) and remove the RHS luggage compartment trim (1).



14. Remove the RHS luggage compartment floor grommet (1).
15. Drill out the grommet hole to Ø31mm.
16. File any rough or sharp edges and spray on rust inhibitor.



17. Disconnect the LHS 4-way tail light connectors (1) and patch the Trailer Harness 4-way mating connectors (2) in between.
18. Route the Trailer Harness (P/No: 100639-WL) down and towards the rear of the luggage compartment.



Issue Date 13-04-11

Page 5

Part No: 100639-WL

Hayman Reese (Cequent)
PO Box 4050, Dandenong South VIC 3164
Phone 1800 812 017 Email info@haymanreese.com.au

www.haymanreese.com.au



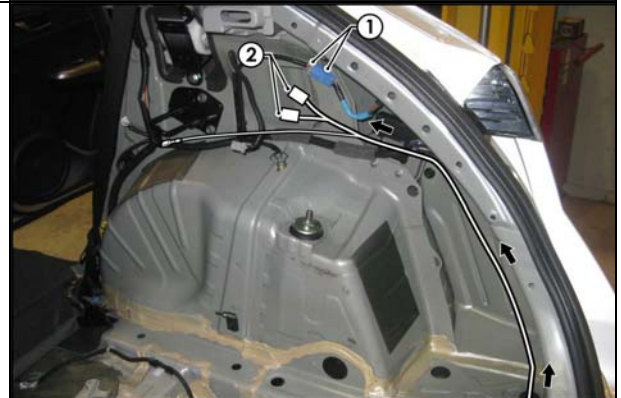
HAYMAN REESE
PART No: 100639-WL
HONDA FK/FN CIVIC HATCH
INSTALLATION INSTRUCTIONS

PLEASE ENSURE THAT INSTRUCTIONS ARE UNDERSTOOD PRIOR TO FITMENT

19. Route the Trailer Harness (1) along the rear of the luggage compartment and towards the RHS of the vehicle.

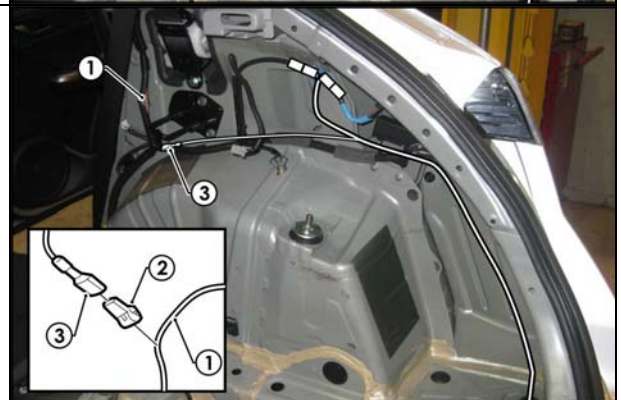


20. Route the Trailer Harness up towards the RHS 4-way tail light connectors (1).
21. Disconnect the RHS 4-way tail light connectors (1) and patch the Trailer Harness 4-way mating connectors (2) in between.



22. Locate the vehicle 'BROWN' reverse signal wire (1).
23. Following the table below, connect the ezy tap (2) to the vehicle 'BROWN' reverse signal wire (1).
24. Connect the Trailer Harness reverse terminal (3) to the ezy tap (2).

Function	Trailer Patch	Vehicle Connector
REVERSE	BLACK	BROWN



Issue Date 13-04-11

Page 6

Part No: 100639-WL

Hayman Reese (Cequent)
PO Box 4050, Dandenong South VIC 3164
Phone 1800 812 017 Email info@haymanreese.com.au

www.haymanreese.com.au



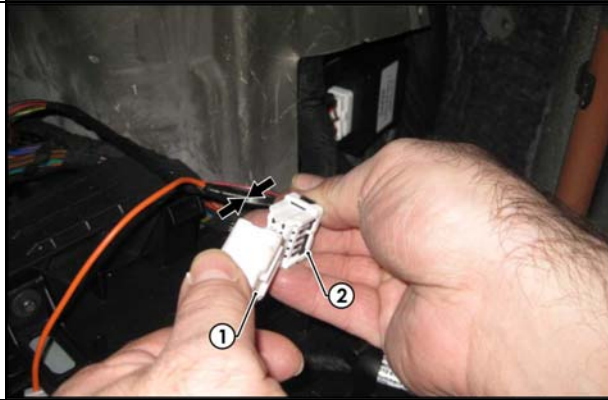
HAYMAN REESE
PART No: 100639-WL
HONDA FK/FN CIVIC HATCH
INSTALLATION INSTRUCTIONS

PLEASE ENSURE THAT INSTRUCTIONS ARE UNDERSTOOD PRIOR TO FITMENT

25. Mount the trailer socket (1) to the towbar mounting bracket using M4 fasteners (not supplied).
26. Route the Tail Harness (tail length 1200mm) (2) across the towbar towards the RHS of the vehicle and up through the previously drilled out hole.
27. Ensure the Tail Harness grommet is seated correctly and secure in place using a cable tie (not supplied).



28. In the luggage compartment, connect the Tail Harness 8-way connector (1) to the Trailer Harness mating 8-way connector (2).



29. Test the Trailer Harness function using a Light Board or multi-meter.
30. Secure all Harnesses using cables ties (not supplied).
31. Re-fit all removed parts and secure all fasteners, ensuring there are no squeaks or rattles.
32. Place the instructions in the glove box after fitment.

Issue Date 13-04-11

Page 7

Part No: 100639-WL

Hayman Reese (Cequent)
PO Box 4050, Dandenong South VIC 3164
Phone 1800 812 017 Email info@haymanreese.com.au

www.haymanreese.com.au

