

HAYMAN REESE
PART No: **02723RW**
MAHINDRA PIK UP 2009 - on

INSTALLATION INSTRUCTIONS

PLEASE ENSURE THAT INSTRUCTIONS ARE UNDERSTOOD PRIOR TO FITMENT



Installation Time: Approx 30 Mins

Towbar Installation Instructions
MAHINDRA PIK UP 2009 - on

Towbar capacity

Part Number 02723RW

Max Towing Braked 2500kg
Max Static Ball Load 250kg

Hayman Reese (Cequent)
PO Box 4050, Dandenong South VIC 3164
Phone 1800 812 017 Email info@haymanreese.com.au

HAYMAN REESE
PART No: 02723RW
MAHINDRA PIK UP 2009 - on

INSTALLATION INSTRUCTIONS

PLEASE ENSURE THAT INSTRUCTIONS ARE UNDERSTOOD PRIOR TO FITMENT

Warning:

1. Do not, drill, cut, weld or otherwise modify the towbar.
2. If you are using electric welding on a motor vehicle, **always** check that the vehicle is not equipped with electronic engine or instrument management equipment. Failure to do so could **destroy** any onboard computers. If in doubt, check with the vehicle's manufacturer.
1. **General:** Ensure all hardware items have been included refer to assembly diagram.
2. It is recommended that the instructions are read through and completely understood before making any attempt to fit this product.
3. Be wary of any changes to vehicle designs or other accessories that may conflict with the installation of this product.
4. Before drilling ensure that the area is clear of fuel, electrical & other components.
5. All holes drilled into the body panels shall have all burrs & swarf removed then coated with a suitable rust preventative paint.
6. The high tensile fasteners supplied with this product were used to achieve the specified rating. If replacement is required ensure that fasteners of the same rating & quality are used. Contact an authorised **Hayman Reese** dealer if further information is required.
7. Ensure that all hardware is fastened to torque list below check fasteners on regular basis.
8. Towbar load rating sticker provided with this product shall be conspicuously located on inside rear end of the driver's door. **(See diagram below).**
9. Hayman Reese recommends that you check your tow ball to ensure that it complies with the Australian standards **AS 4177.2**.
10. **PLEASE NOTE:** It is advised to remove your lug or tbm when not actually towing so as to produce a clear view of the vehicles registration plate if obscured, and to also provide maximum available departure angle.

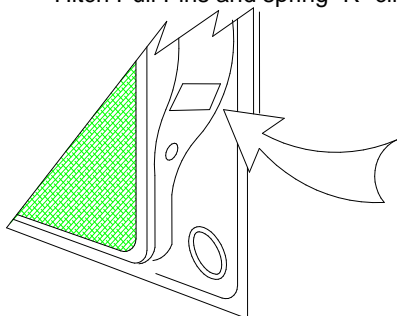
Tow bar Maintenance and Care.

Hayman Reese recommends that bolt torque's, as listed below, are routinely and regularly inspected and checked for correct tension. Replace any worn or defective parts.

We recommended to remove Tow Ball Mounts (TBM's, tongues or lugs) when not being used for any considerable length of time.

So as to avoid injury, when not towing it is suggested that the tongue, Pull Pin and R-clip are removed then stored in a safe, clean and dry place, away from excessive moisture.

Hitch Pull Pins and spring "R" clips are regularly checked for proper installation. Replace any worn or defective parts.



Place load rating sticker
inside driver's door here

RECOMMENDED ASSEMBLY TORQUE LISTING

Diameter Grade 8.8 Bolt

M6	9.5 Nm
M8	21.7 Nm
M10	43.4 Nm
M12	77.3 Nm
M14	146 Nm
M16	189.8 Nm

FOR TOWING PURPOSES ONLY

For towing capacity details please refer to vehicle owner's manual or to the manufacturer. Overloading can void your warranties.

INSTALLATION INSTRUCTIONS

PLEASE ENSURE THAT INSTRUCTIONS ARE UNDERSTOOD PRIOR TO FITMENT

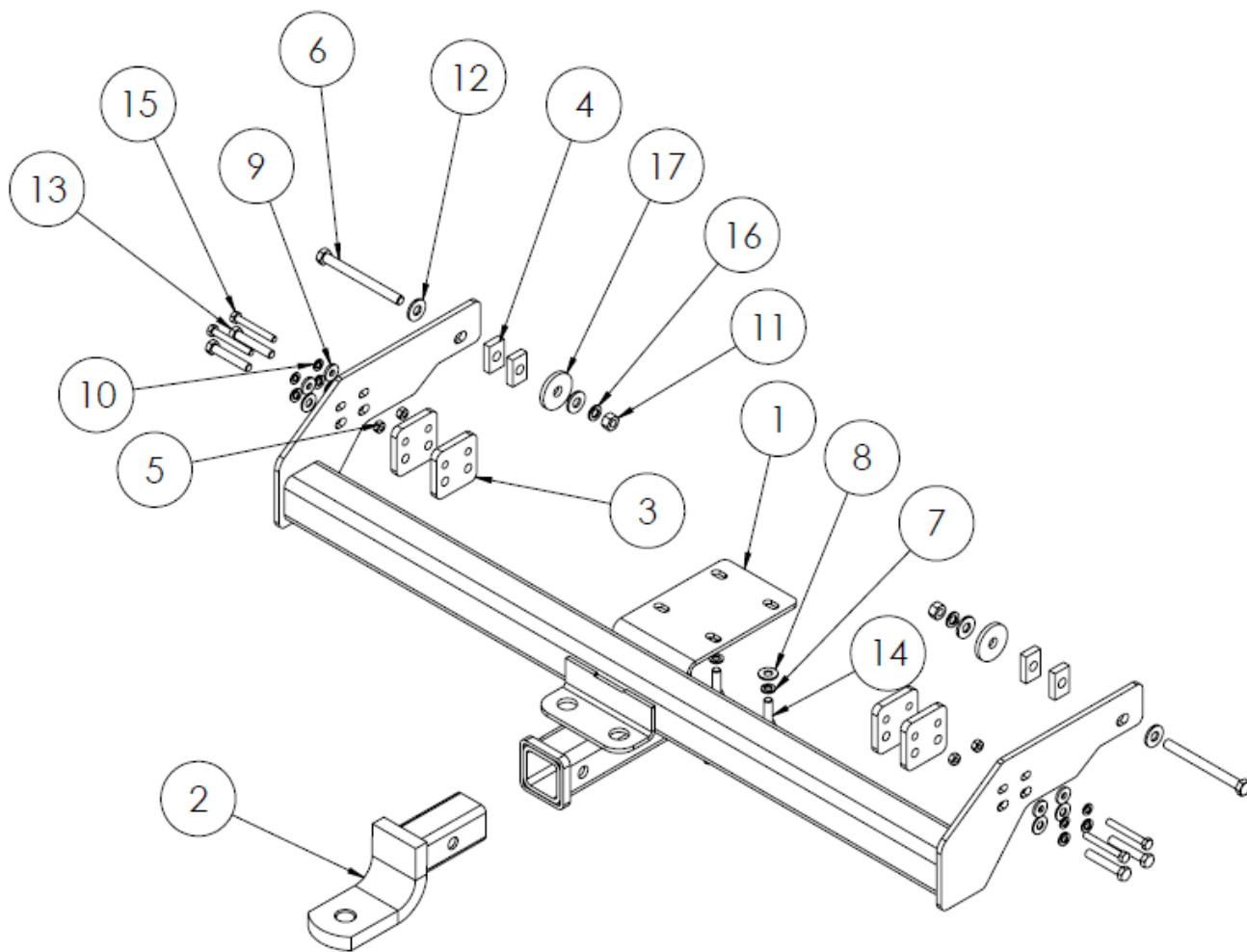


FIGURE 1 – LAYOUT DIAGRAM

HAYMAN REESE

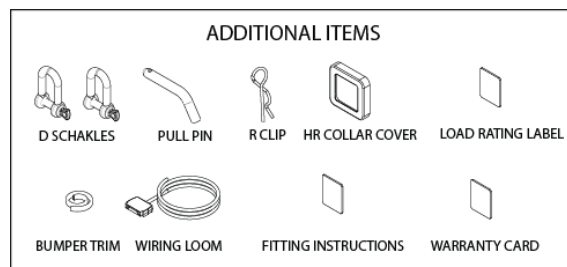
PART No: 02723RW

MAHINDRA PIK UP 2009 - on

INSTALLATION INSTRUCTIONS

PLEASE ENSURE THAT INSTRUCTIONS ARE UNDERSTOOD PRIOR TO FITMENT

QTY.	DESCRIPTION	ITEM NO.
1	WELDED ASSY	1
1	TBM	2
4	SIDE ARM PLATE	3
4	SPACER PLATE	4
4	M8 - 1.25 NUT	5
2	BOLT M12-1.75x130 GR8.8	6
8	M10 X 3.5 X 2.2 SPRING WSHR	7
8	Washer Flat M10 x 23 x 2 z/p	8
4	M8 x 22 x 3.3mm FLAT WASHER	9
4	WSHR SPRING FT SEC M8x3.0x2.0mm z/p	10
2	M12x1.75 HEX NUT PC8	11
4	WASHER M12x28.8x3mm	12
4	M10 X 60 X 1.5 BOLT	13
4	M10 - 1.5 x 35mm BOLT	14
4	M8 X 65 BOLT	15
2	Wshr spring ft sec M12x4.0x2.5mm z/p	16
2	FIT PLATE	17



INSTALLATION INSTRUCTIONS

PLEASE ENSURE THAT INSTRUCTIONS ARE UNDERSTOOD PRIOR TO FITMENT

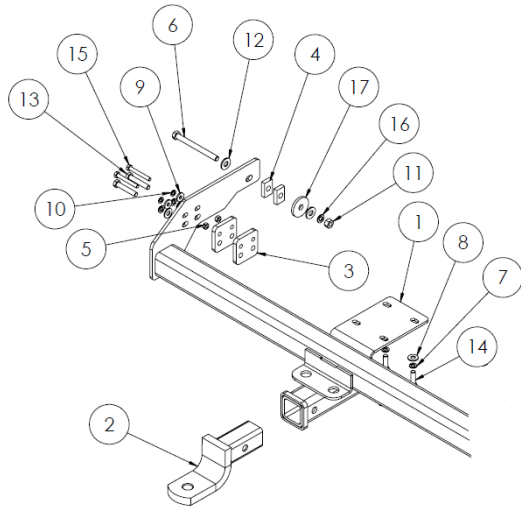


Figure 2 – Locate the towbar on the vehicle.

Note: Position the vehicle to a safe working height.

1. Locate the towbar on the vehicle and mount it using the relevant fasteners, shown in Figure 2.

Note: Spacer plates (Item 3 X 2 and Item 4 X 2), are used, sandwiched between the side arms and chassis rail.

Note: Passenger side shown, repeat the step for driver side.



Figure 3 – Towbar fitted to vehicle.

2. Torque the bolts to the required torque mentioned on page 2.
3. Affix the load rating label, as shown on page 2.
4. Use the Pull pin & R Clip, shown on page 4, as per the directions mentioned on page 2.
5. Insert the D Shackles, shown on page 4, into the chain connection plate.
6. Install the wiring, as per the wiring instructions followed.

HAYMAN REESE
PART No: 100479-WL
MAHINDRA PIKUP

INSTALLATION INSTRUCTIONS

PLEASE ENSURE THAT INSTRUCTIONS ARE UNDERSTOOD PRIOR TO FITMENT

Wiring Loom Installation Instructions

MAHINDRA PIKUP
Part No: 100479-WL

Tail Harness Length Required: 1200mm
RPA Override Switch Part No: 04848 (If Fitted)

Wiring Loom Installation Time: Approx 15 Mins

Issue Date 22-09-10

Page 1

Part No: 100479-WL

Hayman Reese (Cequent)
PO Box 4050, Dandenong South VIC 3164
Phone 1800 812 017 Email info@haymanreese.com.au

www.haymanreese.com.au

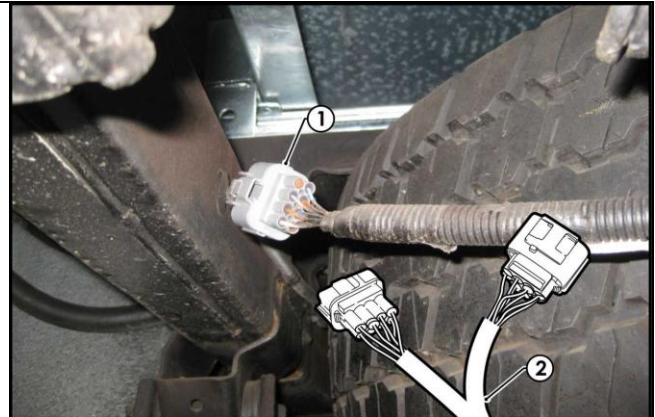


HAYMAN REESE
PART No: 100479-WL
MAHINDRA PIKUP

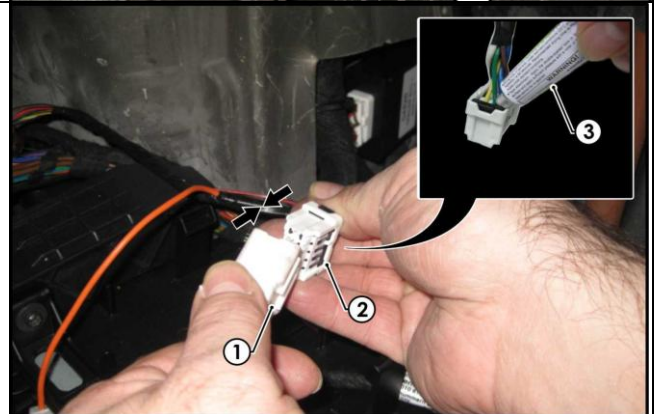
INSTALLATION INSTRUCTIONS

PLEASE ENSURE THAT INSTRUCTIONS ARE UNDERSTOOD PRIOR TO FITMENT

1. From the rear of the outside of the vehicle, locate the LHS tail light harness connector (1).
2. Disconnect the tail light connector (1) and patch in the trailer patch (P/No: 100479-WL) mating connectors (2).



3. Connect the trailer harness 8-way connector (1) to the tail harness (tail length 1200mm) mating 8-way connector (2).
4. Waterproof the trailer harness 8-way female connector (1) and the tail harness 8-way male connector (2) using silicone or electrical grease (3).



5. Route the trailer harness (1) along the rear of the towbar towards the RHS of the vehicle.
6. Mount the trailer socket to the towbar mounting bracket using M4 fasteners (not supplied).
7. Bundle any excess tail harness and secure it in place using a cable tie (not supplied).



Issue Date 22-09-10

Page 2

Part No: 100479-WL

Hayman Reese (Cequent)
PO Box 4050, Dandenong South VIC 3164
Phone 1800 812 017 Email info@haymanreese.com.au

www.haymanreese.com.au



HAYMAN REESE
PART No: 100479-WL
MAHINDRA PIKUP

INSTALLATION INSTRUCTIONS

PLEASE ENSURE THAT INSTRUCTIONS ARE UNDERSTOOD PRIOR TO FITMENT

- | | |
|---|--|
| <ol style="list-style-type: none">8. Test the trailer patch function using a light board or multimeter.9. Secure all harnesses using cables ties (not supplied).10. Re-fit all removed parts and secure all fasteners, ensuring there are no squeaks or rattles.11. Place instructions in glove box after fitment. | |
|---|--|

Issue Date 22-09-10

Page 3

Part No: 100479-WL

Hayman Reese (Cequent)
PO Box 4050, Dandenong South VIC 3164
Phone 1800 812 017 Email info@haymanreese.com.au

www.haymanreese.com.au

