

HAYMAN REESE
PART No: **RL2568W**
KIA SOUL

INSTALLATION INSTRUCTIONS

PLEASE ENSURE THAT INSTRUCTIONS UNDERSTOOD PRIOR TO FITMENT



Installation Time: Approx **45** Mins

Towbar Installation Instructions
KIA SOUL 2009

Towbar capacity

Part Number RL2568W

Max Towing Braked 1300kg
Max Static Ball Load 130kg

Hayman Reese (Cequent)
PO Box 4050, Dandenong South VIC 3164
Phone 1800 812 017 Email info@haymanreese.com.au

HAYMAN REESE

PART No: **RL2568W**

KIA SOUL 2009

INSTALLATION INSTRUCTIONS

PLEASE ENSURE THAT INSTRUCTIONS UNDERSTOOD PRIOR TO FITMENT

Warning:

1. Do not, drill, cut, weld or otherwise modify the towbar.
2. If you are using electric welding on a motor vehicle, **always** check that the vehicle is not equipped with electronic engine or instrument management equipment. Failure to do so could **destroy** any onboard computers. If in doubt, check with the vehicle's manufacturer.
1. **General:** Ensure all hardware items have been included refer to assembly diagram.
2. It is recommended that the instructions are read through and completely understood before making any attempt to fit this product.
3. Be wary of any changes to vehicle designs or other accessories that may conflict with the installation of this product.
4. Before drilling ensure that the area is clear of fuel, electrical & other components.
5. All holes drilled into the body panels shall have all burrs & swarf removed then coated with a suitable rust preventative paint.
6. The high tensile fasteners supplied with this product were used to achieve the specified rating. If replacement is required ensure that fasteners of the same rating & quality are used. Contact an authorised **Hayman Reese** dealer if further information is required.
7. Ensure that all hardware is fastened to torque list below check fasteners on regular basis.
8. Towbar load rating sticker provided with this product shall be conspicuously located on inside rear end of the driver's door. **(See diagram below).**
9. Hayman Reese recommends that you check your tow ball to ensure that it complies with the Australian standards **AS 4177.2**.
10. **PLEASE NOTE:** It is advised to remove your lug or tbm when not actually towing so as to produce a clear view of the vehicles registration plate if obscured, and to also provide maximum available departure angle.

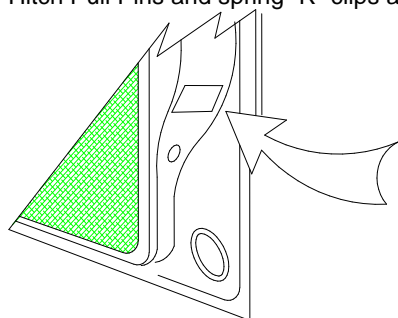
Tow bar Maintenance and Care.

Hayman Reese recommends that bolt torque's, as listed below, are routinely and regularly inspected and checked for correct tension. Replace any worn or defective parts.

We recommended to remove Tow Ball Mounts (TBM's, tongues or lugs) when not being used for any considerable length of time.

So as to avoid injury, when not towing it is suggested that the tongue, Pull Pin and R-clip are removed then stored in a safe, clean and dry place, away from excessive moisture.

Hitch Pull Pins and spring "R" clips are regularly checked for proper installation. Replace any worn or defective parts.



Place load rating sticker
inside driver's door here

RECOMMENDED ASSEMBLY TORQUE LISTING

Diameter Grade 8.8 Bolt

M6	9.5 Nm
M8	21.7 Nm
M10	43.4 Nm
M12	77.3 Nm
M14	146 Nm
M16	189.8 Nm

FOR TOWING PURPOSES ONLY

For towing capacity details please refer to vehicle owner's manual or to the manufacturer. Overloading can void your warranties.

Issue Date **17/5/10**

Page 2

Part No: **RL2568W**

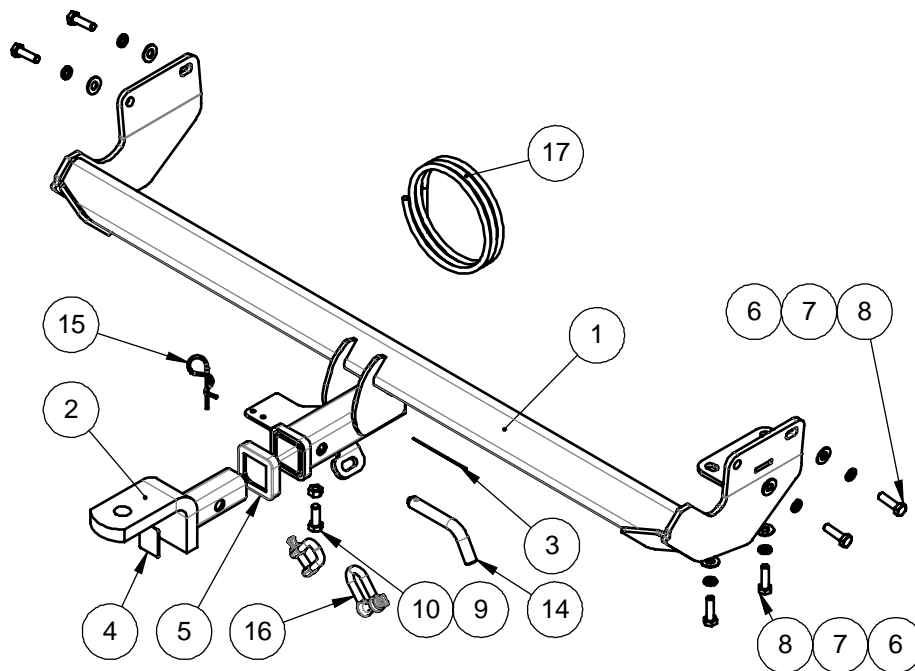
HAYMAN REESE

PART No: **RL2568W**

KIA SOUL 2009

INSTALLATION INSTRUCTIONS

PLEASE ENSURE THAT INSTRUCTIONS UNDERSTOOD PRIOR TO FITMENT



QTY.	DESCRIPTION	ITEM NO.
1	WELDED ASSEMBLY KIA SOUL	1
1	TRAILER BALL MOUNT	2
1	CP label	3
1	H.R STICKER	4
1	RL H/BOX C/COVER BLANK	5
6	Washer Flat M10 x 23 x 2 z/p	6
6	M10 X 3.5 X 2.2 SPRING WSHR	7
6	M10 x 1.25 x 35mm Bolt	8
1	NUT HX M10 - 1.5 Z/P	9
1	M10 - 1.5 x 30mm BOLT	10
1	FITTING INSTRUCTIONS	11
1	Warranty Card	12
1	LRL - HR	13
1	PULL PIN	14
1	SPRING COTTER PIN	15
2	'D' SHACKLE	16
1	WIRING LOOM	17


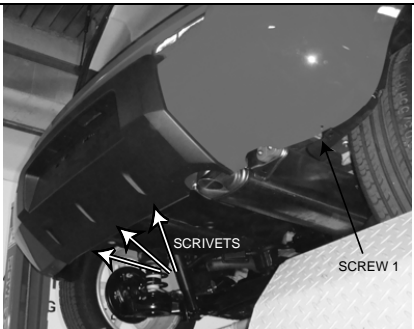

HAYMAN REESE

PART No: **RL2568W**

KIA SOUL 2009

INSTALLATION INSTRUCTIONS

PLEASE ENSURE THAT INSTRUCTIONS UNDERSTOOD PRIOR TO FITMENT

	<p>1. Position the vehicle on the hoist and raise to a safe working height.</p>
	<p>2. Remove 3 scrivets from the underside of the vehicle.</p>
	<p>3. Remove 5 screws from around each wheel arch. Refer photo.</p> <p>4. Remove and discard shipping hook.</p>





HAYMAN REESE

PART No: **RL2568W**

KIA SOUL 2009

INSTALLATION INSTRUCTIONS

PLEASE ENSURE THAT INSTRUCTIONS UNDERSTOOD PRIOR TO FITMENT

 <p>RUBBER EXHAUST HANGER HOOKED IN PLACE</p>	<p>5. Disconnect rear muffler hangers to lower the muffler.</p>
 <p>RUBBER EXHAUST HANGER UNHOOKED</p>	<p>6. Disconnect front muffler hangers to lower the muffler</p>
 <p>MASK BUMPER</p>	<p>7. Remove the centre bumper hanger and discard. From centre of bumper cut 90mm wide 175mm long for towbar cutout.</p> <p>Note: Using Masking tape shown to prevent scratched during towbar fitment.</p>
	<p>8. Fit towbar to the vehicle shown, fit over the driver side first. Fasten towbar to vehicle using M12x35 bolts, spring washers and flat washers. Torque all fasteners to specification.</p> <p>9. Refit bumper bar.</p>

HAYMAN REESE
PART No: 100149-WL
KIA SOUL

INSTALLATION INSTRUCTIONS

PLEASE ENSURE THAT INSTRUCTIONS ARE UNDERSTOOD PRIOR TO FITMENT

Wiring Loom Installation Instructions

KIA SOUL 2K
Part No: 100149-WL

Tail Harness Length Required: 1200mm
RPA Override Switch Part No: 04848 (If Fitted)

Wiring Loom Installation Time: Approx 30 Mins

Issue Date 05-10-09

Page 1

Part No: 100149-WL

Hayman Reese (Cequent)
PO Box 4050, Dandenong South VIC 3164
Phone 1800 812 017 Email info@haymanreese.com.au

www.haymanreese.com.au

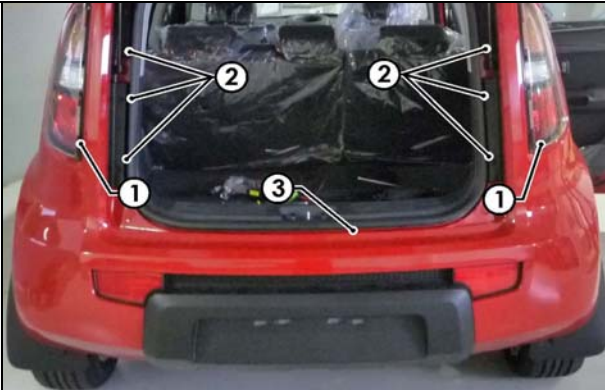


HAYMAN REESE
PART No: 100149-WL
KIA SOUL

INSTALLATION INSTRUCTIONS

PLEASE ENSURE THAT INSTRUCTIONS ARE UNDERSTOOD PRIOR TO FITMENT

1. Remove the LHS and RHS tail lights (1) by removing the indicated screws (2). Remove the rear bumper fascia (3) by removing the bumper fasteners from the top of the bumper fascia and around the wheel arches.



2. Connect the Trailer Patch Harness (P/No: 100149-WL) (1) to the vehicle tail light connectors (2).

Note that the RHS of the Trailer Patch Harness has the 8-way female tail connector (3).



3. On the Tail Harness and mating connector, apply electrical grease or silicon (1) on to the back of the connectors to make them water proof. Connect the Tail Harness (1200mm length) (2) to the Trailer Patch Harness tail connector (3).

Route the Tail Harness along the towbar and mount Trailer socket (4) to towbar mounting bracket using M4 fasteners. Secure all harnesses with cable ties.

Refit the rear bumper.
Test the Trailer Harness function using a Light Board or multimeter.
Secure the Harness using cables ties.
Place the fitting instructions in the glove box when finished.



Issue Date 05-10-09

Page 2

Part No: 100149-WL

Hayman Reese (Cequent)
PO Box 4050, Dandenong South VIC 3164
Phone 1800 812 017 Email info@haymanreese.com.au

www.haymanreese.com.au

