



HAYMAN REESE
LEADING THE WAY

PART No: R2525
CITROEN DISPATCH VAN

PLEASE ENSURE THAT INSTRUCTIONS UNDERSTOOD PRIOR TO FITMENT



Citroen Dispatch Van Lwb & Swb Installation Time: Approx 40 Mins

Towbar Installation Instructions

Towbar capacity

Part Number R2525

Max Towing Braked 2000Kg
Max Static Ball Load 80Kg



HAYMAN REESE
LEADING THE WAY

PART No: R2525
CITROEN DISPATCH VAN

PLEASE ENSURE THAT INSTRUCTIONS UNDERSTOOD PRIOR TO FITMENT

Warning:

1. Do not, drill, cut, weld or otherwise modify the towbar.
2. If you are using electric welding on a motor vehicle, **always** check that the vehicle is not equipped with electronic engine or instrument management equipment. Failure to do so could **destroy** any onboard computers. If in doubt, check with the vehicle's manufacturer.

1. **General:** Ensure all hardware items have been included refer to assembly diagram.
2. It is recommended that the instructions are read through and completely understood before making any attempt to fit this product.
3. Be wary of any changes to vehicle designs or other accessories that may conflict with the installation of this product.
4. Before drilling ensure that the area is clear of fuel, electrical & other components.
5. All holes drilled into the body panels shall have all burrs & swarf removed then coated with a suitable rust preventative paint.
6. The high tensile fasteners supplied with this product were used to achieve the specified rating. If replacement is required ensure that fasteners of the same rating & quality are used. Contact an authorised **Hayman Reese** dealer if further information is required.
7. Ensure that all hardware is fastened to torque list below check fasteners on regular basis.
8. Towbar load rating sticker provided with this product shall be conspicuously located on inside rear end of the driver's door. **(See diagram below).**
9. Hayman Reese recommends that you check your tow ball to ensure that it complies with the Australian standards **AS 4177.2**.
10. **PLEASE NOTE:** It is advised to remove your lug or tbn when not actually towing so as to produce a clear view of the vehicles registration plate if obscured, and to also provide maximum available departure angle.

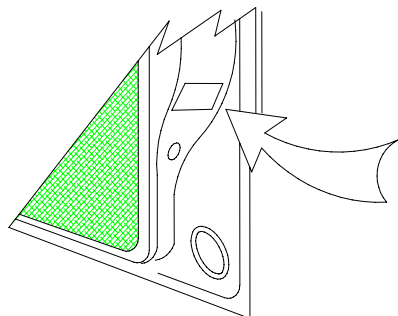
Tow bar Maintenance and Care.

Hayman Reese recommends that bolt torque's, as listed below, are routinely and regularly inspected and checked for correct tension. Replace any worn or defective parts.

We recommended to remove Tow Ball Mounts (TBM's, tongues or lugs) when not being used for any considerable length of time.

So as to avoid injury, when not towing it is suggested that the tongue, Pull Pin and R-clip are removed then stored in a safe, clean and dry place, away from excessive moisture.

Hitch Pull Pins and spring "R" clips are regularly checked for proper installation. Replace any worn or defective parts.



**Place load rating sticker
inside driver's door here**

RECOMMENDED ASSEMBLY TORQUE LISTING

<u>Diameter</u>	<u>Grade 8.8 Bolt</u>
M6	9.5 Nm
M8	21.7 Nm
M10	43.4 Nm
M12	77.3 Nm
M14	146 Nm
M16	189.8 Nm

FOR TOWING PURPOSES ONLY

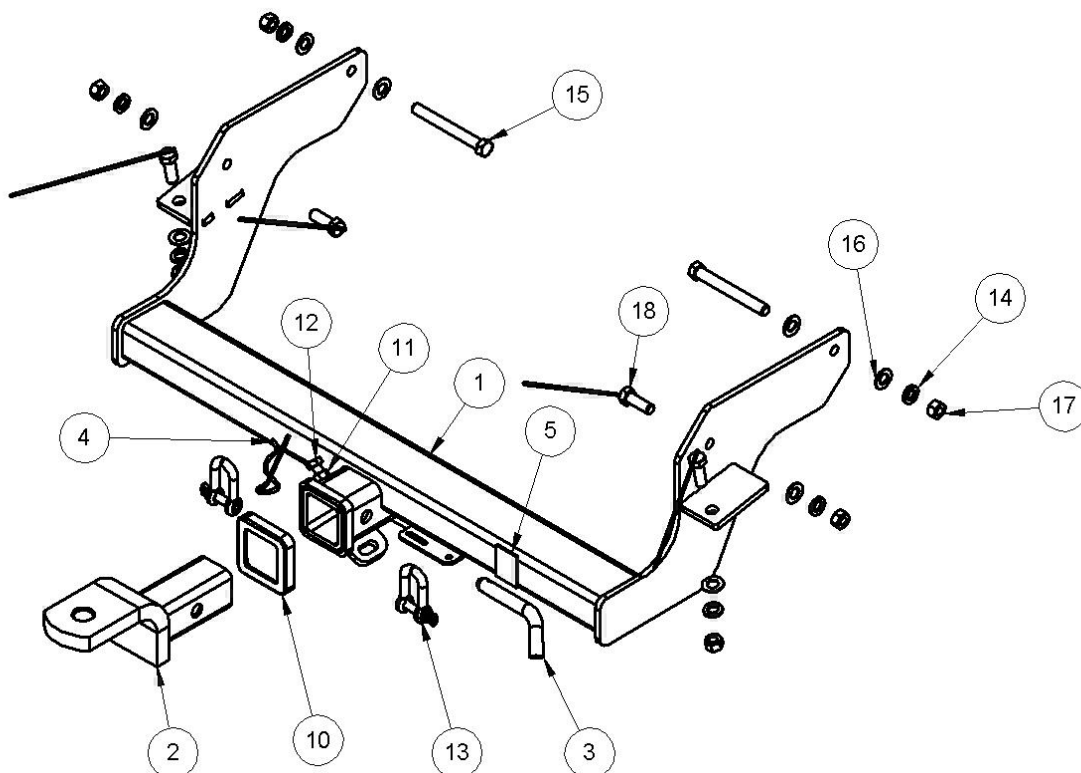
For towing capacity details please refer to vehicle owner's manual or to the manufacturer. Overloading can void your warranties.



HAYMAN REESE
LEADING THE WAY

PART No: R2525
CITROEN DISPATCH VAN

PLEASE ENSURE THAT INSTRUCTIONS UNDERSTOOD PRIOR TO FITMENT

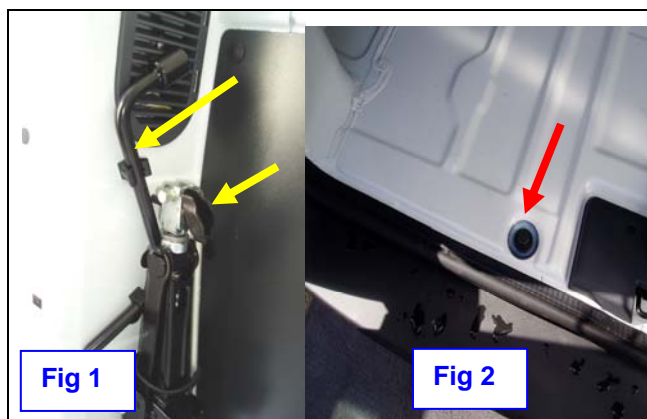


ITEMS 6, 7, 8 & 9 ARE NOT SHOWN ON ASSEMBLY DIAGRAM

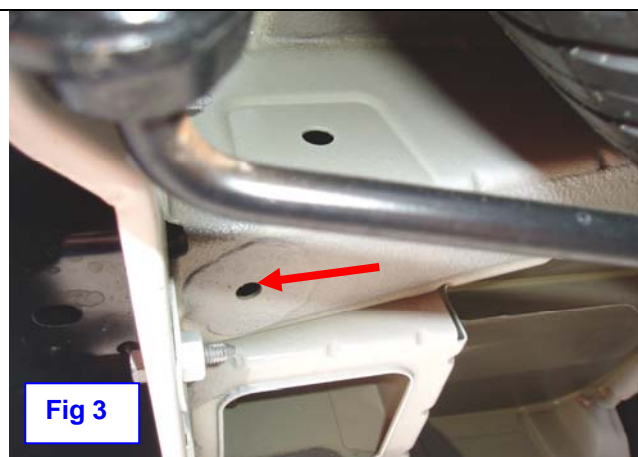
LOCATION	PART NO.	QTY.	DESCRIPTION	ITEM NO.
ASSEMBLY	A02525R-A1	1	CITROEN DISPATCH VAN WELDED ASSY	1
ASSEMBLY	21126	1	T.B.MOUNT	2
ASSEMBLY	55010	1	PULL PIN	3
ASSEMBLY	55020	1	SPRING COTTER PIN	4
ASSEMBLY	94603	1	H.R STICKER	5
BOLT PACK	94062	1	BOLT BAG	6
BOLT PACK	95900	1	HR LIFETIME WARRANTY	7
BOLT PACK	X2000-80	1	DOOR RATING STICKER	8
BOLT PACK	R2525-FI	1	FITTING INSTRUCTIONS	9
BOLT PACK	94590	1	HITCH BOX COLLAR COVER	10
BOLT PACK	92310	1	NUT M10 x 1.5P	11
BOLT PACK	92041	1	M10 x 25 1.5P BOLT	12
BOLT PACK	94572	2	D' SHACKLE	13
BOLT PACK	92339	6	M12 SPRING WASHER	14
BOLT PACK	92122	2	M12 x100	15
BOLT PACK	92338	8	Wshr ft 1/2" x 1-1/8" x 16 z/p	16
BOLT PACK	92316	6	M12 x 1.75P NUT	17
BOLT PACK	A02084R-A2	4	BOLT & WIRE ASSEMBLY	18



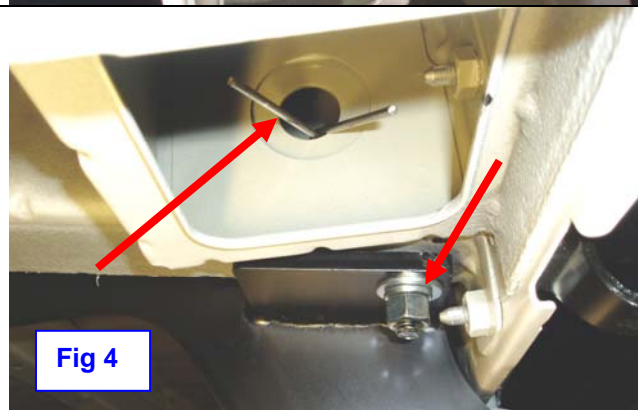
PLEASE ENSURE THAT INSTRUCTIONS UNDERSTOOD PRIOR TO FITMENT



- 11. Remove spare wheel via**
- Open rear doors of van to gain access to spare wheel jack, then remove retaining bolt that holds spare wheel jack in place see fig1.
 - Remove spare wheel brace from retaining clips see fig 1.
 - Using spare wheel brace lower the spare wheel by engaging with bolt in side rear luggage compartment see fig 2.
 - Then lower spare wheel by rotating anti clockwise.



- 12. Drill out existing holes under chassis**
- Open up existing hole each side of the vehicle to 13mm.
 - Passenger side chassis rail shown drivers side is a mirror image.
 - Ensure that all raw edges are free of burrs & coated with suitable anti rust paint.
 - Caution two person lift required** offer towbar to vehicle sub frame as shown if fig 4.



- 13. Access hole at side of chassis rails**
- Feed bolts on wire through large access hole each side of the chassis rails see fig 4.
 - Fasten the vertical bolt loosely first each side of the vehicle with nuts & spring washers provided.
 - Ensure that excess wire protruding out of access hole is tucked away inside rails.



- 14. Fitment of hardware**
- Fit flat & spring washers with nuts provided to rear most horizontal mount see fig 5.
 - Fasten hardware to torque listing.
 - Using hole in the side arm of towbar as a guide first pilot drill through the chassis rail.
 - Caution** pilot drill must be a minimum of 100mm in length to penetrate the chassis rail.
 - Then open up holes to 12.5mm.
 - Ensure to coat all raw edges with suitable rust preventative paint.



HAYMAN REESE
LEADING THE WAY

PART No: R2525
CITROEN DISPATCH VAN

PLEASE ENSURE THAT INSTRUCTIONS UNDERSTOOD PRIOR TO FITMENT



Fig 6

15. Fitment of hardware

- a. Fit M12 x 100 bolts flat washers x 2 each side with spring washers & nuts provided see fig 6.
- b. Ensure that the bolts face outwards from the chassis rail as shown in fig 6 otherwise bolts will interfere with spare tyre.
- c. Passenger side is shown repeat process for driver's side.
- d. Ensure that all hardware is tightened to the torque listing.

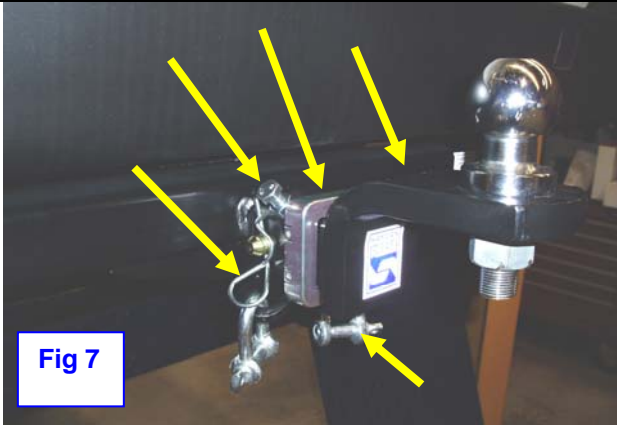


Fig 7

16. Fitment of tbm

- a. Fit Hayman Reese collar cover.
- b. Fit anti rattle bolt & nut.
- c. Fit trailer ball mount 21126 in the up position with pull pin & R clip.
- d. Fit M10 D shackles to the chain connection points see fig 7.
- e. Refit the spare wheel in the reverse of steps 11 d through to 11 a.