

INSTALLATION INSTRUCTIONS



RL2430-FITTING INSTRUCTIONS TO SUIT HOLDEN EPICA 3/07-0N
ENSURE INSTRUCTIONS ARE UNDERSTOOD BEFORE INSTALLATION.

Warning:

1. Do not, drill, cut, weld or otherwise modify the towbar.
2. If you are using electric welding on a motor vehicle, **always** check that the vehicle is not equipped with electronic engine or instrument management equipment. Failure to do so could **destroy** any onboard computers. If in doubt, check with the vehicle's manufacturer.

MAXIMUM TOW WEIGHT: 1200Kg

MAXIMUM BALL WEIGHT: 120Kg

General:

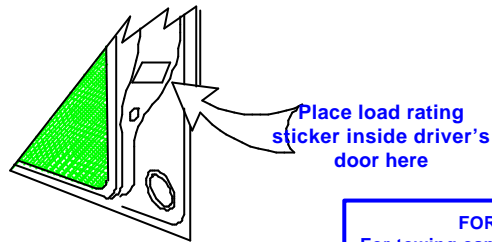
1. Ensure all hardware items have been included
2. It is recommended that the instructions are read through and completely understood before making any attempt to fit this product.
3. Be wary of any changes to vehicle designs or other accessories that may conflict with the installation of this product.
4. Follow steps below to remove the bumper:
 - a). Remove 4 tabs on the rear bottom of the bumper bar.
 - b). Unscrew 6 bolts, 3 each on both sides of the vehicle from the mud flaps as shown in figures 1, 2 & 3.
 - c). Remove 2 screws as shown in Figure 4, from the side of the tail lamp on both sides.
 - d). Remove tail lamp, after unplugging the light globes as shown in figure 5.
 - e). Remove 1 tab below the tail lamp on both sides as shown in figure 5.
 - f). Remove two tabs from the inside of the boot, as shown in figure 6, so as to remove the top panel.
 - g). Remove rear bumper.
5. Follow steps below to remove the impact beam & discard it.
 - a). Remove the two rubber plugs on both sides as shown in figure 7, in-order to gain access to the panel below.
 - b). Remove the four bolts as shown in figure 8 & discard them.
 - c). Remove the wiring, attached to the impact beam as shown in figure 9 & use the cable ties provided to attach the wiring on to the towbar after installation.
 - d). Remove impact beam shown in figure 10 & discard.
6. Remove the bolt as shown in figure 11, in-order to remove the charcoal canister on the driver side.
7. Lower the exhaust from the two rearmost rubber mounts.
8. Remove the 2nd rearmost bolt from the towing hook as shown in figure 12 & 2nd rearmost bolt from the exhaust hanger.
9. Lower the exhaust from the two rearmost rubber mounts.
10. Lift the towbar into position & insert the side arms of the towbar into the chassis as shown in figure 13.
11. Line up the holes on the towbar to the holes of the vehicles, as seen from the inside of the boot. Line up the packer assembly & the loose plates as shown in figure 14 & 15, and insert the M10 x 65 bolts provided with the boltpack.
12. Use the smaller loose plate to insert the third bolt from the bottom of the chassis as shown in figure 16.
13. Tighten all nuts & bolts to the specified torque listing.
14. Once the towbar is mounted cut the bumper using the profile as shown in figure 18.
15. Refit the bumper as in reverse of step 4.
16. Use bumper brackets provided on the towbar as shown in figure 17, to put the bumper tags back on.

INSTALLATION INSTRUCTIONS



RL2430-FITTING INSTRUCTIONS TO SUIT HOLDEN EPICA 3/07-0N ENSURE INSTRUCTIONS ARE UNDERSTOOD BEFORE INSTALLATION.

17. The high tensile fasteners supplied with this product were used to achieve the specified rating. If replacement is required ensure that fasteners of the same rating & quality are used. Contact an authorised **Hayman Reese** dealer if further information is required.
18. Ensure that all hardware is fastened to torque list below check fasteners on regular basis.
19. Hayman Reese recommends that you check your tow ball to ensure that it complies with the Australian standards **AS 4177.2**.
20. **PLEASE NOTE:** It is advised to remove your lug or TBM when not actually towing so as to produce a clear view of the vehicles registration plate if obscured, and to also provide maximum available departure angle.
21. Towbar load rating sticker provided with this product shall be conspicuously located on inside rear end of the driver's door. **(See diagram below).**



RECOMMENDED LISTING Diameter	ASSEMBLY Grade 8.8 Bolt	TORQUE
M6		9.5 Nm
M8		21.7 Nm
M10		43.4 Nm
M12		77.3 Nm

FOR TOWING PURPOSES ONLY
For towing capacity details please refer to vehicle owner's manual or to the manufacturer. Overloading can void your warranties.

Tow bar Maintenance and Care.

Hayman Reese recommends that bolt torque's, as listed below, are routinely and regularly inspected and checked for correct tension. Replace any worn or defective parts.

We recommended to remove Tow Ball Mounts (TBM's, tongues or lugs) when not being used for any considerable length of time.

So as to avoid injury, when not towing it is suggested that the tongue, Pull Pin and R-clip are removed then stored in a safe, clean and dry place, away from excessive moisture.

Hitch Pull Pins and spring "R" clips are regularly checked for proper installation. Replace any worn or defective parts.

Fig 1, 2 & 3: Shows bolts that need to be removed from the side mudflaps of the vehicle



Fig 4: Two screws beside tail lamp shown.

Fig 5: Remove tab shown below.

INSTALLATION INSTRUCTIONS

RL2430-FITTING INSTRUCTIONS TO SUIT HOLDEN EPICA 3/07-0N
ENSURE INSTRUCTIONS ARE UNDERSTOOD BEFORE INSTALLATION.

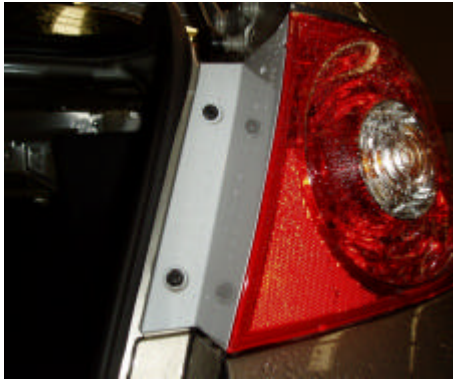


Fig 6: Remove 2 tabs from inside of boot.



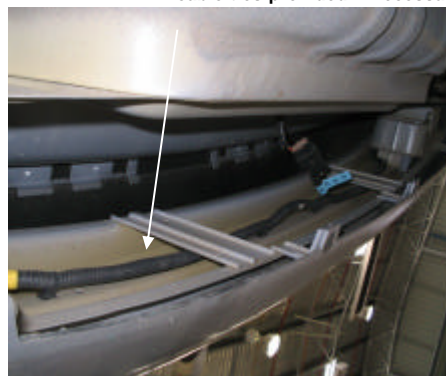
Fig 7: Remove rubber plugs shown below.



Fig 8: Remove 4 bolts as shown from inside of boot. using



Fig 9: Remove wiring & wrap it around towbar
cable ties provided if necessary.



INSTALLATION INSTRUCTIONS



RL2430-FITTING INSTRUCTIONS TO SUIT HOLDEN EPICA 3/07-0N
ENSURE INSTRUCTIONS ARE UNDERSTOOD BEFORE INSTALLATION.

**Fig 10: Remove & discard impact beam shown.
bolt at**



**Fig 11: Remove charcoal canister, by removing
the bottom of the figure shown.**



Fig 12: Remove bolt shown on both sides.



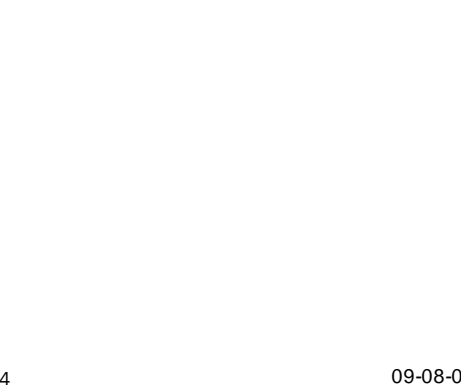
Fig 13: shows towbar being fitted on.



**Fig 14: Line up the packer assembly as shown below.
boot.**



**Fig 15: shows towbar mounted from inside of
boot.**



INSTALLATION INSTRUCTIONS



RL2430-FITTING INSTRUCTIONS TO SUIT HOLDEN EPICA 3/07-0N
ENSURE INSTRUCTIONS ARE UNDERSTOOD BEFORE INSTALLATION.



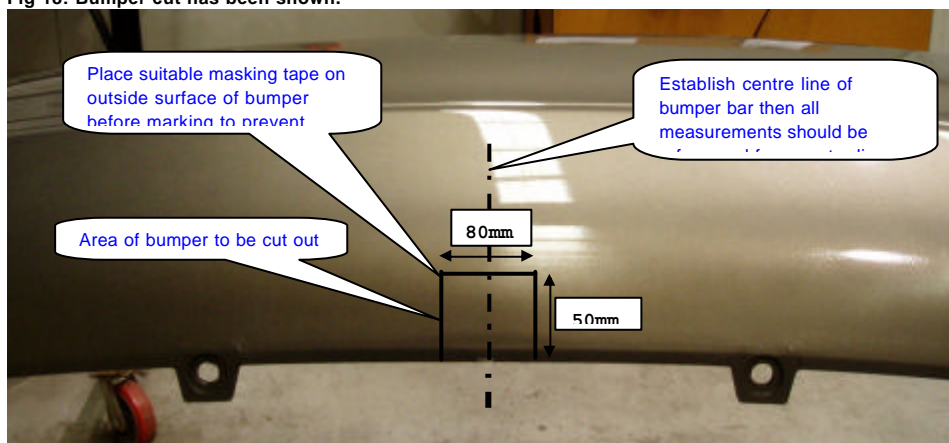
Fig 16: Shows towbar being mounted up from bottom bumper of chassis.



Fig 17: Use brackets provided on bar to put the tags back on.



Fig 18: Bumper cut has been shown.



INSTALLATION INSTRUCTIONS

RL2430-FITTING INSTRUCTIONS TO SUIT HOLDEN EPICA 3/07-0N
ENSURE INSTRUCTIONS ARE UNDERSTOOD BEFORE INSTALLATION.



RL2430 HITCH ASSEMBLY

