

# INSTALLATION INSTRUCTIONS



## RL2117 – TO SUIT HYUNDAI SONATA NF 4 DR SEDAN 01-06-05-ON PLEASE READ INSTRUCTIONS THROUGH BEFORE YOU BEGIN

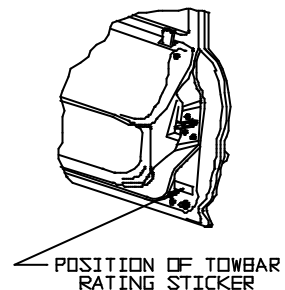
### WARNING:

1. Do not, drill, cut, weld or otherwise modify the towbar.
2. If you are using electric welding on a motor vehicle, **always** check that the vehicle is not equipped with electronic engine or instrument management equipment. Failure to do so could **destroy** any onboard computers. If in doubt, check with the vehicle's manufacturer.

**Max. Towing Weight: 1700Kg**

- 1 Ensure all hardware items have been included.
- 2 Four cylinder models only, remove plastic panel from underside of passenger rear floor pan.
- 3 Remove rear bumper bar via;
  - a) Remove boot latch trim panel & fold quarter panel trim forward.
  - b) Remove 2 bolts from each quarter panel & tail light assembly on each side.
  - c) Remove 2 bolts per side from boot floor area holding bumper irons.
  - d) Remove 4 self tapping screws & 8 plastic trim buttons from top edge of bumper behind boot lid & taillights.
  - e) Remove 3 self tappers at each wheel arch & mud flaps where fitted.
  - f) Remove 4 nuts from spare wheel well then remove bumper.
- 4 Remove muffler from 2 rears most rubber hangers.
- 5 Remove 3 rears most nuts holding the heat shield.
- 6 Lift towbar into position as to align with holes tapped holes in the side of sub frames.
- 7 Fit hardware supplied as per diagram loosely, and then fasten to torque listing below.
- 8 Cut bumper as per instructions see figs 1, 2 & 3.
- 9 Remove then discard support arms as instructions see fig 4.
- 10 Refit bumper in the reverse of steps 5 to 3.
- 11 Towbar rating sticker to be conspicuously located on inside rear end of the driver's door, (**See diagram below**).

**NOTE: Hayman Reese recommends that you check your towball to ensure it complies with Australian Design Rules.**



### RECOMMENDED ASSEMBLY TORQUE LISTING

<u>Diameter</u>	<u>Grade 8.8 Bolt</u>
	Nm
M6	9.5
M8	21.7
M10	43.4
M12	77.3
M16	189.8

#### **FOR TOWING PURPOSES ONLY**

For towing capacity details please refer to vehicle owner's manual or to the manufacturer. Overloading can void your warranties.

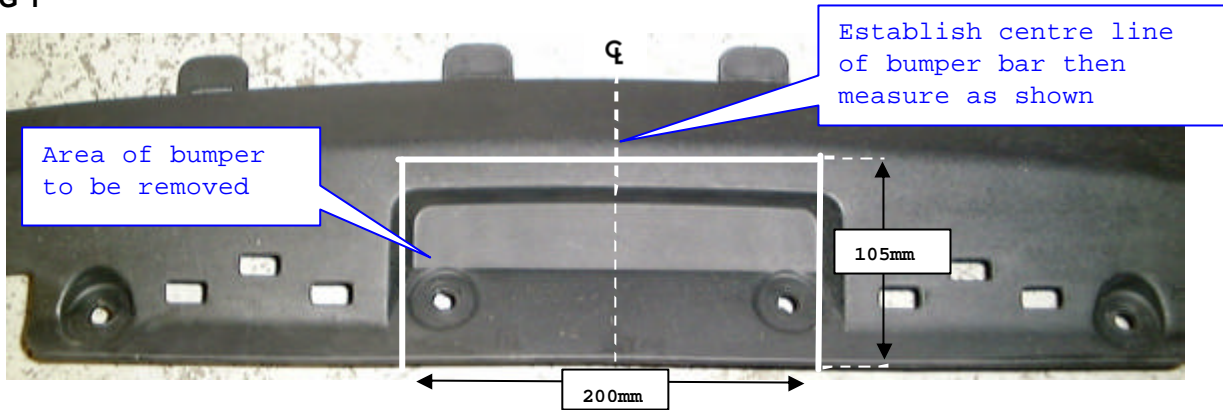
**PLEASE NOTE:** You must remove the lug unless you are actually towing if it obscures your number plate. Failure to do so may result in a fine.

# INSTALLATION INSTRUCTIONS

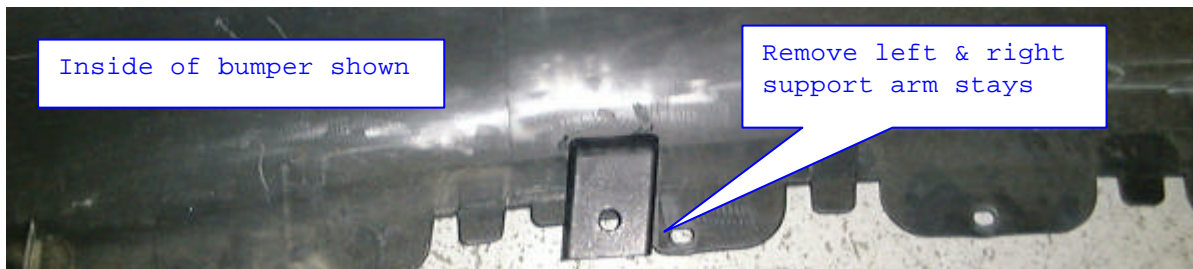


**RL2117 – TO SUIT HYUNDAI SONATA NF 4 DR SEDAN 01-06-05-ON**  
**PLEASE READ INSTRUCTIONS THROUGH BEFORE YOU BEGIN**

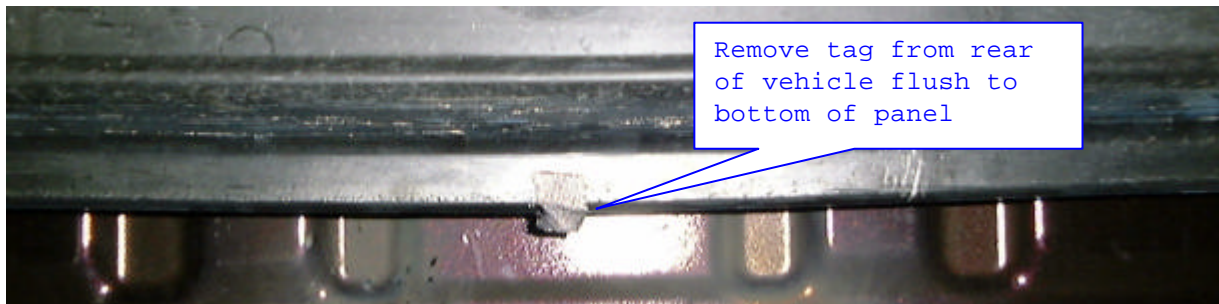
**FIG 1**



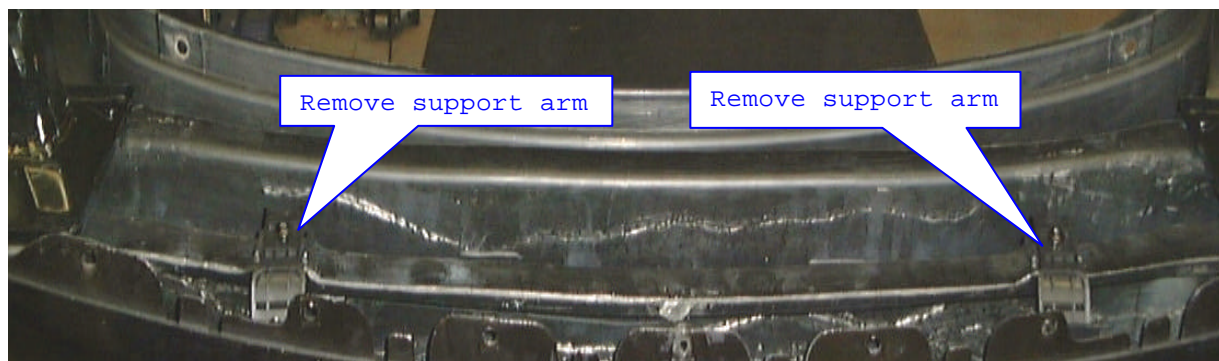
**FIG 2**



**FIG 3**



**FIG 4**



# INSTALLATION INSTRUCTIONS

**RL2117 – TO SUIT HYUNDAI SONATA NF 4 DR SEDAN 01-06-05-ON**  
**PLEASE READ INSTRUCTIONS THROUGH BEFORE YOU BEGIN**

